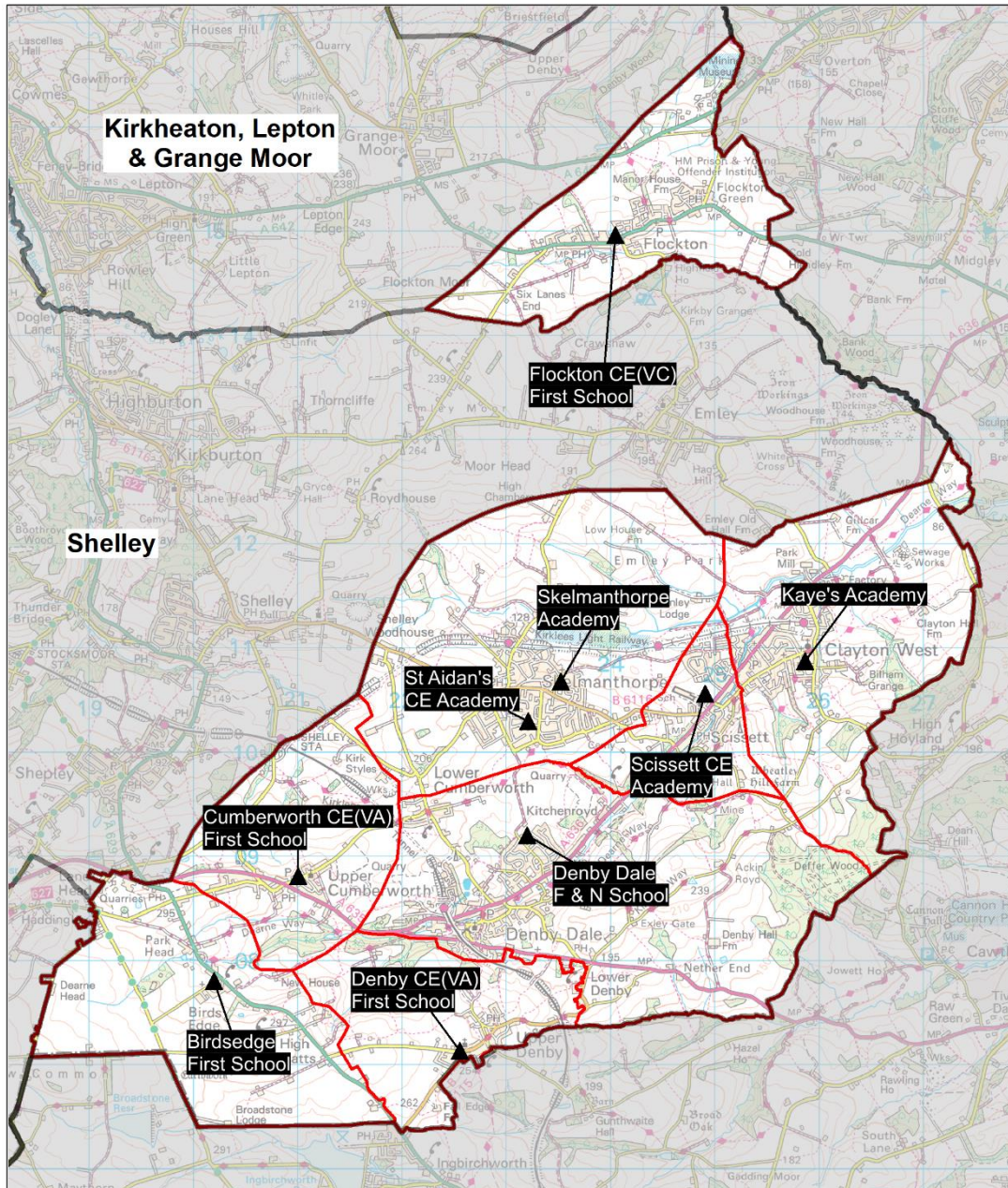


# Planning Area 23: Skelmanthorpe & Denby Dale



Contains Ordnance Survey data

© Crown Copyright and database right 2023

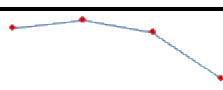
- ❖ Birdsedge First School
- ❖ Cumberworth CE(VA) First School
- ❖ Denby CE(VA) First School
- ❖ Denby Dale F & N School
- ❖ Flockton CE(VC) First School
- ❖ Kaye's Academy
- ❖ Scissett CE Academy
- ❖ Skelmanthorpe Academy
- ❖ St Aidan's CE Academy

**Overview:** The chart on page 212 (and Table B on page 213) shows the demand for Reception places from children resident in this planning area is expected to continue to decline. This is an area in the LA that has a 3-tier system of first and middle schools. The schools in this planning area serve a semi-rural cluster of small settlements, including some rural schools.

**In 2022/23** there were a number of unfilled places at most schools.

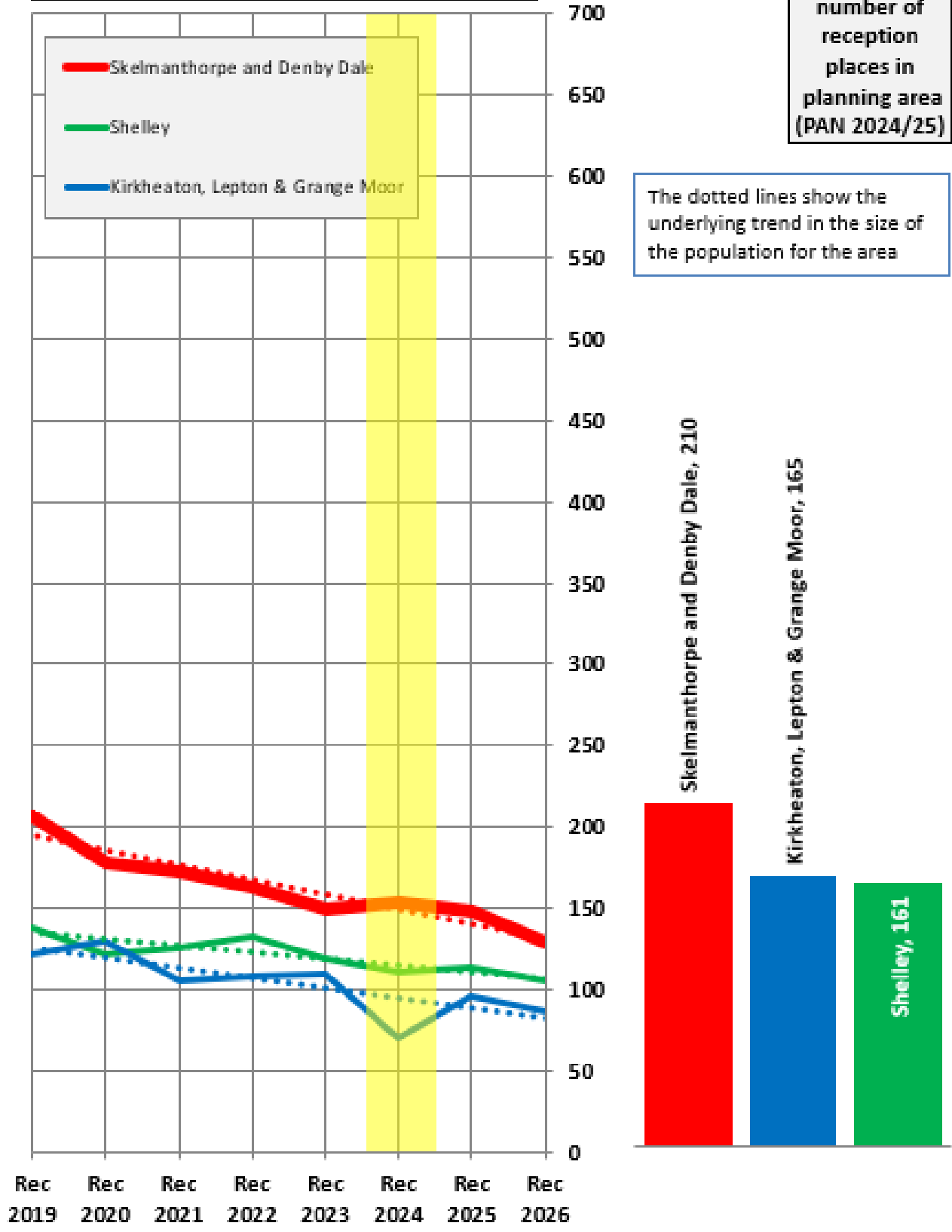
**For 2023/24** there were a number of unfilled places available at national offer day at all but one of the schools. The pattern of pupil distribution illustrates that the majority of children (81%) living in the planning area attend schools in the area, with a very small number of pupils (6%) attending schools here from neighbouring planning areas.

**For 2024, 2025 and 2026** population data indicate a continuation to a declining trend. Many schools serve small rural settlements and have small admission numbers. There is one housing development, where building has commenced on 190 dwellings, that is expected to be complete in around three years. Even modest housing developments can have a disproportionate impact on small rural schools where there may be limited opportunity for an alternative school within a reasonable travelling distance. Any need to address this potential issue in the future will need to be carefully balanced with the declining population and the sustainability of schools, the impact of this situation on school places remains under constant review. Continued engagement is required with the local school system about the level of surplus places in this planning area and opportunities that may exist to review places at a more localised level.

<b>Place planning summary for Planning Area 23. Skelmanthorpe and Denby Dale</b>	
Place planning data for three cohorts of children: Reception, Y1 and Y2 <i>From NHS Oct 2022 and School Census Jan 2023</i> <i>Note numbers in [square brackets] show the <b>average</b> number of children per year group</i>	
<b>557 [186] children live in this PA (NHS)</b> <ul style="list-style-type: none"> <li>• 452 [151] go to schools in this PA</li> <li>• 34 [11] go to schools in other Kirklees PAs</li> <li>• 0 [0] go to schools in non-mainstream provisions</li> <li>• 16 [5] go to schools in other LAs</li> <li>• 55 [18] are unknown</li> </ul>	<b>491 [164] children go to school in this PA (Census)</b> <ul style="list-style-type: none"> <li>• 452 [151] Live in this PA</li> <li>• 29 [10] Live in other PAs</li> <li>• 10 [3] Live outside Kirklees</li> </ul>
Average number of places used per year group Number of reception places available Trend in number of children living in this PA per year group	164 210  <b>Decline</b>
Place planning strategy (assuming current patterns of migration, housing occupancy, parental preference etc) <ul style="list-style-type: none"> <li>• Based on population data the projected need for places is below the capacity of available places</li> <li>• On balance, slightly more children travel OUT to schools in neighbouring PAs than travel in to schools in this PA</li> <li>• <b>Continued engagement is required with the local school system about the level of surplus places in this planning area and opportunities that may exist.</b></li> </ul>	

**Planning Area 23. Skelmanthorpe and Denby Dale**  
**Chart showing pupil population trends and available school places**

population trends in neighbouring planning areas  
 Reception 2019 to Reception 2026 (NHS)



The chart above shows the size of each year group in the child population in the planning area and the neighbouring planning areas for Reception cohorts Sep 2019 to Sep 2026. The dotted line shows the underlying trend in the size of the pupil population for each area.

The bar chart shows the number of Reception class places available in each planning area, based on the Published Admission Numbers (PANs) of the schools in the area. The yellow shading highlights the data for Reception classes in September 2024.

Planning Area 23. Skelmanthorpe and Denby Dale																		
Table A. Number on roll - pupil census January 2023																		
School Name	Table A. Number	PAN 2024/25	Nursery					First School										Total Pupils
	KS1	KS2	< 2 PT	2+ PT	3+ PT	4+ PT	FT	4+ PT	4+ FT	5+	6+	7+	8+	9+	10+			
Birdsedge First School	15	15	0	0	0	0	0	0	5	7	7	9	6	7	0	41		
Cumberworth CE (A) First School	20	20	0	0	0	0	0	0	20	20	19	21	22	20	0	122		
Denby CE (A) First School	10	10	0	0	0	0	0	0	9	8	13	9	9	9	0	57		
Denby Dale F & N School	30	33	0	0	0	0	0	0	7	13	23	17	21	20	0	101		
Flockton CE (VC) First School	15	15	0	0	0	0	0	0	19	10	9	14	14	14	0	80		
Kaye's F & N School	30	32	0	4	9	0	10	0	30	27	27	29	26	29	0	191		
Scissett CE Academy	30	32	0	0	0	0	0	0	30	24	25	30	31	31	0	171		
Skelmanthorpe Academy	30	30	0	2	9	0	0	0	21	21	21	29	26	28	0	157		
St Aidan's CE Academy	30	30	0	0	0	0	0	0	18	30	28	33	30	34	0	173		
	210	217	0	6	18	0	10	0	159	160	172	191	185	192	0			

Planning Area 23 Skelmanthorpe and Denby Dale															
Table B. Number of pupils in each year cohort resident in the planning area - school year 2022-23 - (NHS Oct2022)															
future reception year groups				Infant 2022/23			Junior 2022/23				Secondary 2022/23				
Reception Sep 2026	Reception Sep 2025	Reception Sep 2024	Reception Sep 2023	Early years/KS1		Key Stage 2				Key Stage 3			KS4		
				Reception 2022/23	Year 1	Year 2	Year 3	Year 4	Year 5	Year 6	Year 7	Year 8	Year 9	Year 10	Year 11
129	148	153	149	163	173	178	206	196	201	218	227	203	220	212	202

## Planning Area 23. Skelmanthorpe and Denby Dale

Table C: Where do children living in the Skelmanthorpe and Denby Dale planning area go to school?

Reception - Year 6 (Jan 2023)

School Attended	Birdsedge First School	Cumberworth CE ( VA ) First School	Denby CE ( VA ) First School	Denby Dale First and Nursery School	Flockton CE (VC) First School	Kaye's Academy	Scissett CE (VA ) Academy	Skelmanthorpe Academy	Grand Total
Battleyford CE(VC) Primary School					2				2
Birdsedge First School	13	1	1	6	1			3	25
Brockholes CE (VC) J & I School				2					2
Cumberworth CE (VA) First School	5	35	5	41		2	1	11	100
Dalton School							1		1
Denby CE(VA) First School	3		19	17		1	1	3	44
Denby Dale First & Nursery School	2	3		81		3		4	93
Emley First School					25	7		8	40
Flockton CE (VC) First School					78				78
Gomersal Primary School				1					1
Grange Moor Primary School					7				7
Hepworth J & I School								2	2
Highburton CE First Academy								3	3
Kaye's Academy				11	1	133	14	4	163
Kirkburton CE (VA) First School		1		1	1		3		6
Kirkburton Middle School				1	1			9	11
Marsden I & N School				1					1
New Mill Infant School								1	1
New Mill Junior School	2								2
Rowley Lane J I & N School					1			2	3
Scissett CE Academy		1	1	5	9	66	64	14	160
Scissett Middle School	6	10	4	44	24	34	13	53	188
Shelley First School	1			3				2	6
Shepley First School	1		2					7	10
Skelmanthorpe Academy				4	3	4	5	125	141
St Aidan's Church of England Academy	3	2		12		3	6	137	163
Thornhill J & I School					2				2
<b>Grand Total</b>	<b>36</b>	<b>53</b>	<b>32</b>	<b>230</b>	<b>155</b>	<b>253</b>	<b>108</b>	<b>388</b>	<b>1255</b>

## Planning Area 23. Skelmanthorpe and Denby Dale

Table D: Where do children attending school in Skelmanthorpe and Denby Dale live?

Reception - Year 6 (Jan 2023)

School Attended

PAA of Residence	Birdsedge First School	Cumberworth CE (VA) First School	Denby CE(VA) First School	Denby Dale First & Nursery School	Flockton CE (VC) First School	Kaye's Academy	Scissett CE Academy	Scissett Middle School	Skelmanthorpe Academy	St Aidan's Church of England Academy	Grand Total
Birdsedge First School (The Mast Academy Trust)	13	5	3	2				6		3	32
Birkby I & N School / Birkby Junior School	1										1
Brockholes CE (VC) J & I School	1										1
Christ Church CE Academy										1	1
Cumberworth CE ( VA ) First School	1	35		3			1	10		2	52
Dalton Junior Infant and Nursery School					1						1
Denby C E ( VA ) First School	1	5	19				1	4			30
Denby Dale First and Nursery School	6	41	17	81		11	5	44	4	12	221
Emley First School		3		1		2	2	1	1		10
Flockton CE (VC) First School	1				78	1	9	24	3		116
Headlands CE (VC) J I & N School								1			1
Hepworth J & I School		1	1								2
Highburton CE First Academy		1								2	3
Hillside Primary School										1	1
Kaye's Academy School		2	1	3		133	66	34	4	3	246
Kirkburton CE (VA ) First School				2				1			3
Lepton CofE Primary Academy				1			1				2
Lindley Church of England Infant School / Lindley Junior School			2								2
Netherton I & N School / South Crosland CE (VA) Junior School									1		1
New Mill Infant School / New Mill Junior School (Learning Accord MAT)	2	2	2							1	7
Rowley Lane J I & N School	1										1
Scholes J & I School							1			1	2
Scissett CE (VA ) Academy		1	1			14	64	13	5	6	104
Shelley First School	4	5	1	2		2	1	4	2		21
Shepley First School		5					1	3	1	2	12
Skelmanthorpe Academy School	3	11	3	4		4	14	53	125	137	354
<b>Grand Total</b>	<b>34</b>	<b>117</b>	<b>50</b>	<b>99</b>	<b>79</b>	<b>167</b>	<b>166</b>	<b>198</b>	<b>146</b>	<b>171</b>	<b>1227</b>

Tables E(i) to E(iii) below show how Reception places were allocated in this planning area at each of the last three National Offer Days, compared to the number of Reception places available at each school and the number of applicants resident in each school's Priority Admission Area (PAA). Blanks in the tables indicate a school does not have a PAA.

**Table E(i)**

2023/24	PAN	No of <u>applicants</u> living in PAA	No of places allocated	Vacancies	Waiting list
<b>Skelmanthorpe &amp; Denby Dale</b>					
Birdsedge First School	15	5	13	2	0
Cumberworth CE (VA) First School	20	8	16	4	0
Denby CE(VA) First School	10	4	10	0	0
Denby Dale First & Nursery School	30	27	18	12	0
Flockton CE (VC) First School	15	19	12	3	0
Kaye's Academy	30	29	25	5	0
Scissett CE Academy	30	18	24	6	0
Skelmanthorpe Academy	30	38	13	17	0
St Aidan's Church of England Academy	30		19	11	0
	<b>210</b>	<b>148</b>	<b>150</b>	<b>60</b>	<b>0</b>

**Table E(ii)**

2022/23	PAN	No of <u>applicants</u> living in PAA	No of places allocated	Vacancies	Waiting list
<b>Skelmanthorpe &amp; Denby Dale</b>					
Birdsedge First School	15	3	4	11	0
Cumberworth CE (VA) First School	20	3	20	0	3
Denby CE(VA) First School	10	7	9	1	0
Denby Dale First & Nursery School	30	30	10	20	0
Flockton CE (VC) First School	15	26	15	0	4
Kaye's F & N School	30	39	27	3	0
Scissett CE Academy	30	12	30	0	4
Skelmanthorpe Academy	30	41	23	7	0
St Aidan's Church of England Academy	30		17	13	0
	<b>210</b>	<b>161</b>	<b>155</b>	<b>55</b>	<b>11</b>

**Table E(iii)**

2021/22	PAN	No of <u>applicants</u> living in PAA	No of places allocated	Vacancies	Waiting list
<b>Skelmanthorpe &amp; Denby Dale</b>					
Birdsedge First School	15	7	5	10	0
Cumberworth CE (VA) First School	20	8	19	1	0
Denby CE(VA) First School	10	2	5	5	0
Denby Dale First & Nursery School	30	30	13	17	0
Flockton CE (VC) First School	15	21	10	5	0
Kaye's F & N School	30	36	30	0	1
Scissett CE Academy	30	13	22	8	0
Skelmanthorpe Academy	30	40	20	10	0
St Aidan's Church of England Academy	30		27	3	0
	<b>210</b>	<b>157</b>	<b>151</b>	<b>59</b>	<b>1</b>