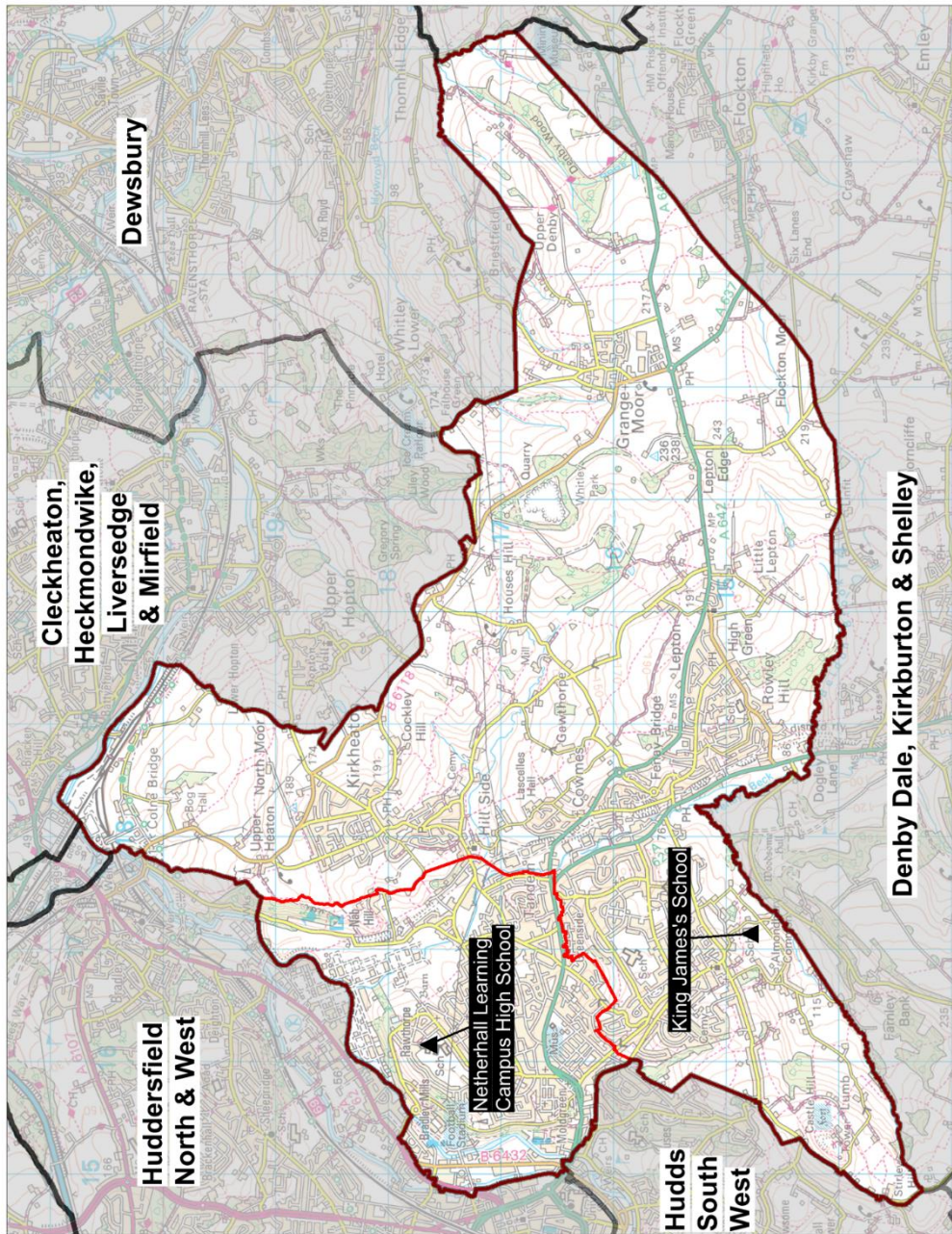


Planning Area 31: Huddersfield South & East and Kirkheaton



Contains Ordnance Survey data
 © Crown Copyright and database right 2023

- ❖ King James's School
- ❖ Netherhall Learning Campus High School

Overview: Table B on page 224 and the chart on page 222 illustrate that the future year 7 cohort size of young people resident in this planning area will continue to decline slightly overall, albeit with some fluctuations.

Netherhall Learning Campus High School is part of an all-through federation with Netherhall St James C of E (VC) Infant and Nursery School and Netherhall Learning Campus Junior School. The school also incorporates the Kirklees Creative and Media Studio School with a 14-19 offer on site. King James's School is located in the southern part of the planning area serving Lepton, Kirkheaton, Grange Moor and Almondbury. The secondary phase of Almondbury Community School was removed from 1 September 2020 following a statutory process. Since this time, King James's School has been admitting over PAN to 210. Its PAN permanently increased from 186 to 210 from 2023/24 after a new block of classrooms was added.

In 2022/23 at national offer day all Y7 places were allocated at both schools. King James's School continued to admit over PAN to 210 and Netherhall Learning Campus High School admitted 145 pupils.

In 2023/24 at national offer day all Y7 places were allocated at both schools. Additional capacity was added as a bulge year in this planning area, with King James's School offering five places above its PAN of 210 to 215 and Netherhall Learning Campus High School offering 15 places above its PAN of 145. Post-national offer day, but before the initial round of reallocations, a further five bulge places were introduced at Netherhall Learning Campus High School taking the number of places offered to 165.

The pattern of pupil distribution illustrates that around 66% of children who live in this planning area attend schools in the area, whilst 22% are securing places in neighbouring planning areas. 7% of pupils who are attending schools here are from neighbouring planning areas.

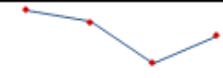
For 2024, 2025 and 2026 population data suggest a slightly declining trend with a more significant dip in 2025 only. There are established trends of pupils resident in this planning area accessing a school place in surrounding planning areas.

Longer term, the declining population trend may be lessened by the impact of future Local Plan housing developments in this and neighbouring planning areas. There is no need for additional places.

Place planning summary for Planning Area 31. Huddersfield South & East, Kirkheaton

Place planning data for five cohorts of children: Years 7,8,9,10,11
 From NHS Oct 2022 and School Census Jan 2023
 Note numbers in [square brackets] show the **average** number of children per year group

<p>2463 [493] children live in this PA (NHS)</p> <ul style="list-style-type: none"> • 1623 [325] go to schools in this PA • 535 [107] go to schools in other Kirklees PAs • 56 [11] go to schools in non-mainstream provisions • 38 [8] go to schools in other LAs • 211 [42] are unknown 	<p>1756 [351] children go to school in this PA (Census)</p> <ul style="list-style-type: none"> • 1623 [325] Live in this PA • 126 [25] Live in other PAs • 7 [1] Live outside Kirklees
---	--

<p>Average number of places used per year group Number of Year 7 places available Trend in number of children living in this PA per year group</p>	<p>351 355</p>  <p>Slight decline with fluctuations</p>
--	--

Place planning strategy (assuming current patterns of migration, housing occupancy, parental preference etc)

- Based on population data the projected need for places is within the capacity of available places
- On balance, significantly more children travel OUT to schools in other PAs than travel in to schools in this PA
- No need for additional places

Planning Area 31. Huddersfield South & East, Kirkheaton

Table C: Where do children living in the Huddersfield South & East, Kirkheaton planning area go to school?

Years 7-11 (Jan 2023)

School Attended	All Hallows' CE (VA) Primary School / Hill View Academy KS2	Dalton Junior Infant and Nursery School	Grange Moor Primary School	Hill View Academy	Kirkheaton Primary School	Lepton CofE Primary Academy	Lowerhouses CE (VC) Junior Infant and Early Years School	Moldgreen Community Primary School	Netherhall St James CE(VC) I&N School / Netherhall Learning Campus Junior School	Rowley Lane J I & N School	Grand Total
All Saints Catholic College	8	42		11	6	5	6	8	31		117
Castle Hall Academy		3		1	4	2	2		2		14
Colne Valley High School	3	2					1				6
Heckmondwike Grammar School	1	2	2	1	2	3			3	1	15
Holmfirth High School				1			2			1	4
Honley High School	10	10		7	4	1	3	5	5		45
King James's School	207	52	46	147	178	208	28	18	13	84	981
Kirkburton Middle School	6	5	4	9	1	12	1	1	4	5	48
Manor Croft Academy			1						1		2
Moor End Academy				2			2		7		11
Netherhall Learning Campus High School	14	140		37	12	2	16	90	327	4	642
Newsome Academy	9	8		17		1	86	14	13		148
North Huddersfield Trust School	1	1			1		5		9		17
Royds Hall, A Share Academy	1	1		1	1		2	2	6		14
Salendine Nook High School Academy	5			1			3	3	2		14
Scissett Middle School			1	1							2
Shelley College, A Share Academy	10	11	4	6	2	16	4		5	8	66
St John Fisher Catholic Voluntary Academy			1								1
The Mirfield Free Grammar		1	1	2	4				1	1	10
Upper Batley High School								1			1
Grand Total	275	278	60	244	215	250	161	142	429	104	2158

Planning Area 31. Huddersfield South & East, Kirkheaton

Table D: Where do children attending school in Huddersfield South & East, Kirkheaton live?

Years 7-11 (Jan 2023)

School Attended

PAA of Residence	School Attended		
	King James's School	Netherhall Learning Campus High School	Grand Total
All Hallows' CE (VA) Primary School / Hill View Academy KS2	207	14	221
Ashbrow School		3	3
Berry Brow I & N School / Newsome Junior School	3		3
Birkby I & N School / Birkby Junior School	7	13	20
Christ Church CE Academy		2	2
Crossley Fields J & I School	1		1
Crow Lane Primary and Foundation Stage School		1	1
Dalton Junior Infant and Nursery School	52	140	192
Denby Dale First and Nursery School	1		1
Flockton CE (VC) First School	1		1
Grange Moor Primary School	46		46
Highburton CE (VC) First School	3		3
Hill View Academy	147	37	184
Hillside Primary School	1	4	5
Honley CE(VC) Junior, Infant & Nursery School	3	2	5
Kaye's Academy School	2		2
Kirkburton CE (VA) First School	1		1
Kirkheaton Primary School	178	12	190
Lepton CofE Primary Academy	208	2	210
Lindley Church of England Infant School / Lindley Junior School	2		2
Lowerhouses CE (VC) Junior Infant and Early Years School	28	16	44
Luck Lane, A SHARE Primary Academy		2	2
Manorfield I & N School / Staincliffe CE (VC) Junior School		1	1
Marsden I & N School / Marsden Junior School		1	1
Meltham Moor Primary School		1	1
Moldgreen Community Primary School	18	90	108
Moorlands Primary School	1		1
Mount Pleasant Primary School	1	1	2
Netherhall St James CE(VC) I & N School / Netherhall Learning Campus Junior School	13	327	340
New Mill Infant School / New Mill Junior School (Learning Accord MAT)	1		1
Oak CE (VC) Primary School (Junior)/Beaumont Primary Academy	3	4	7
Old Bank Academy	2		2
Rowley Lane J I & N School	84	4	88
Scissett CE (VA) Academy	1		1
Shelley First School	3		3
Skelmanthorpe Academy School	1		1
Slaithwaite CE (VC) J & I School		1	1
Spring Grove J I & N School	1	3	4
St Thomas CE (VC) Primary School	5	40	45
Thornhill J & I School	1		1
Upperthong J & I School	1		1
Whitechapel Church of England Primary School		1	1
Grand Total	1027	722	1749

Tables E(i) to E(iii) below show how Year 7 places were allocated in this planning area at each of the last three National Offer Days, compared to the number of Year 7 places available at each school and the number of applicants resident in each school's Priority Admission Area (PAA). Blanks in the tables indicate a school does not have a PAA.

Table E(i)

King James's School offered an additional 5 bulge places over PAN and Netherhall Learning Campus High School offered an additional 15 places over PAN.

2023/24	No of Places	Total No of applicants living in PAA	Place allocated				Place allocated		
			Resident in Priority Admission Area allocated	Resident in Planning Area allocated	Resident outside Planning Area allocated	TOTAL No of places allocated	Resident in Priority Admission Area allocated	Resident in Planning Area allocated	Resident outside Planning Area allocated
Huddersfield South & East and Kirkheaton									
King James's School	215	194	160	37	18	215	74.4%	17.2%	8.4%
Netherhall Learning Campus High School	160	230	143	3	14	160	89.4%	1.9%	8.8%
	375	424	310	23	22	355	87.3%	6.5%	6.2%

Table E(ii)

King James's offered an additional 24 places over PAN before its PAN permanently became 210 from 2023/24.

2022/23	No of Places	Total No of applicants living in PAA	Place allocated				Place allocated		
			Resident in Priority Admission Area allocated	Resident in Planning Area allocated	Resident outside Planning Area allocated	TOTAL No of places allocated	Resident in Priority Admission Area allocated	Resident in Planning Area allocated	Resident outside Planning Area allocated
Huddersfield South & East and Kirkheaton									
King James's School	210	222	181	17	12	210	86.2%	8.1%	5.7%
Netherhall Learning Campus High School	145	191	129	6	10	145	89.0%	4.1%	6.9%
	355	413	310	23	22	355	87.3%	6.5%	6.2%

Table E(iii)

King James's offered an additional 24 places over PAN.

2021/22	No of Places	Total No of applicants living in PAA	Place allocated				Place allocated		
			Resident in Priority Admission Area allocated	Resident in Planning Area allocated	Resident outside Planning Area allocated	TOTAL No of places allocated	Resident in Priority Admission Area allocated	Resident in Planning Area allocated	Resident outside Planning Area allocated
Huddersfield South & East and Kirkheaton									
King James's School	210	243	209	1		210	99.5%	0.5%	0.0%
Netherhall Learning Campus High School	145	188	139	2	4	145	95.9%	1.4%	2.8%
	355	431							