

**TOWN AND COUNTRY PLANNING ACT 1990 – SECTION 257  
KIRKLEES COUNCIL (CLAYTON FIELDS, EDGERTON) PUBLIC PATH STOPPING UP  
ORDER 2018**

This order is made by Kirklees Council (the authority) under Section 257 of the Town and Country Planning Act 1990 because it is satisfied that it is necessary to stop up the footpaths to which this order relates in order to enable development to be carried out in accordance with planning permission granted under Part III of the Town and Country Planning Act 1990 namely the implementation of planning consent 2014/93014 and 2017/90190 for residential development.

~~The proposed Woodland Walk Y-Z will be privately maintained in accordance with planning requirements.~~

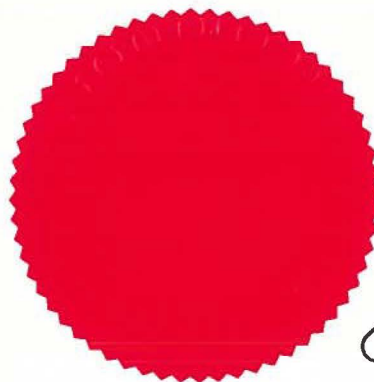
**BY THIS ORDER**

1. The footpaths over the land shown by a bold black line on the attached map and described in Part 1 of the Schedule to this order (“the Schedule”) shall be stopped up as provided below.
2. There shall be created to the reasonable satisfaction of Kirklees Council alternative highways for use as a replacement for the said footpaths as provided in Part 2 of the Schedule and shown by bold black dashes on the attached map.
3. The stopping up of the footpaths shall have effect on the date on which Kirklees Council certify that the terms of Article 2 have been complied with.
4. Where immediately before the date on which the footpaths are stopped up there is apparatus under, in, on, over, along or across it belonging to statutory undertakers for the purpose of carrying on their undertakings, the undertakers shall continue to have the same rights in respect of the apparatus as they then had.
5. This order may be cited as the “Kirklees Council (Clayton Fields, Edgerton) Public Paths Stopping Up Order 2018”

**GIVEN UNDER** the )  
**CORPORATE COMMON SEAL** of )  
**THE BOROUGH OF KIRKLEES** )  
this Twenty Sixth day of September )  
Two Thousand and Eighteen )

*M. A. [Signature]*

Service Director – Legal, Governance & Commissioning/Authorised Signatory



011247

The foregoing order is hereby confirmed  
subject to the red ink modifications thereon

**Sue Doran 11 FEB 2021**

An Inspector appointed by The Secretary of State  
for Environment, Food and  
Rural Affairs

## Schedule

### Part 1

#### Description of site of existing paths or ways

477	A footpath shown on the plan annexed hereto by the bold solid line commencing at its junction with path 345 at point A at grid reference 1321 1776 and proceeding in an easterly direction for 346 metres to point B at grid reference 1352 1771.
478	A footpath shown on the plan annexed hereto by the bold solid line commencing at its junction with Edgerton Road at point C at grid reference 1320 1760 and proceeding via point F at grid reference 1325 1762 in a north easterly direction for 257 metres via point G at grid reference 1340 1774 to point I at grid reference 1341 1774 with a link from point G at grid reference 1340 1774 to point H at grid reference 1341 1775 for a distance of 11 metres.
479	A footpath shown on the plan annexed hereto by the bold solid line commencing at its junction with Edgerton Road at point E at grid reference 1322 1759 and proceeding in a north easterly direction for 42 metres to point F at grid reference 1325 1762.
480	A footpath shown on the plan annexed hereto by the bold solid line commencing at its junction with Edgerton Road at point C at grid reference 1320 1760 and proceeding in a north easterly direction for 171 metres to point J at grid reference 1330 1774.
481	A footpath shown on the plan annexed hereto by the bold solid line commencing at its junction with Deveron Grove at point D at grid reference 1334 1769 and proceeding in a north westerly direction for 68 metres to point J at grid reference 1330 1774.
482	A footpath shown on the plan annexed hereto by the bold solid line commencing at point X at grid reference 1339 1779 and proceeding in a south-westerly direction for 34 metres to point K at grid reference 1337 1776.



## Part 2

### Description of site of alternative highways

A footpath shown on the plan annexed hereto by the bold dashed line commencing at its junction with Queens Road at point N at grid reference 1352 1770 and proceeding in a westerly direction for 292 metres via point W to point T at grid reference 1324 1769.

*Width 2 metres*

A footpath shown on the plan annexed hereto by the bold dashed line commencing at its junction with Queens Road at point P at grid reference 1352 1771 and proceeding in a westerly direction for 150 metres to point O at grid reference 1338 1774.

*Width 2 metres*

A footpath shown on the plan annexed hereto by the bold dashed line commencing at its junction with Edgerton Road at point Q at grid reference 1323 1759 and proceeding in a northerly direction for 177 metres via point S at grid reference 1325 1761 and point T at grid reference 1324 1769 to point M at grid reference 1321 1772.

*Width 2 metres*

A footpath shown on the plan annexed hereto by the bold dashed line commencing at its junction with path 345 at point R at grid reference 1320 1763 and proceeding in an easterly direction for 57 metres to point S at grid reference 1325 1761.

*Width 2 metres*

A footpath shown on the plan annexed hereto by the bold dashed line commencing at its junction with Deveron Grove at point U at grid reference 1335 1768 and proceeding in a northerly direction for 63 metres via point V at grid reference 1334 1772 to point W at grid reference 1332 1773.

*Width 2 metres*

A footpath shown on the plan annexed hereto by the bold dashed line commencing at point V at grid reference 1334 1772 and proceeding in a north easterly direction for 101 metres via points O at grid reference 1338 1774 and Z at grid reference 1338 1776 to point X at grid reference 1339 1779.

*Width 2 metres*

Woodland Walk

A footpath shown on the plan annexed hereto by the bold dashed line commencing at point Y at grid reference 1321 1777 and proceeding in an easterly direction for 209 metres to point Z at grid reference 1338 1776.

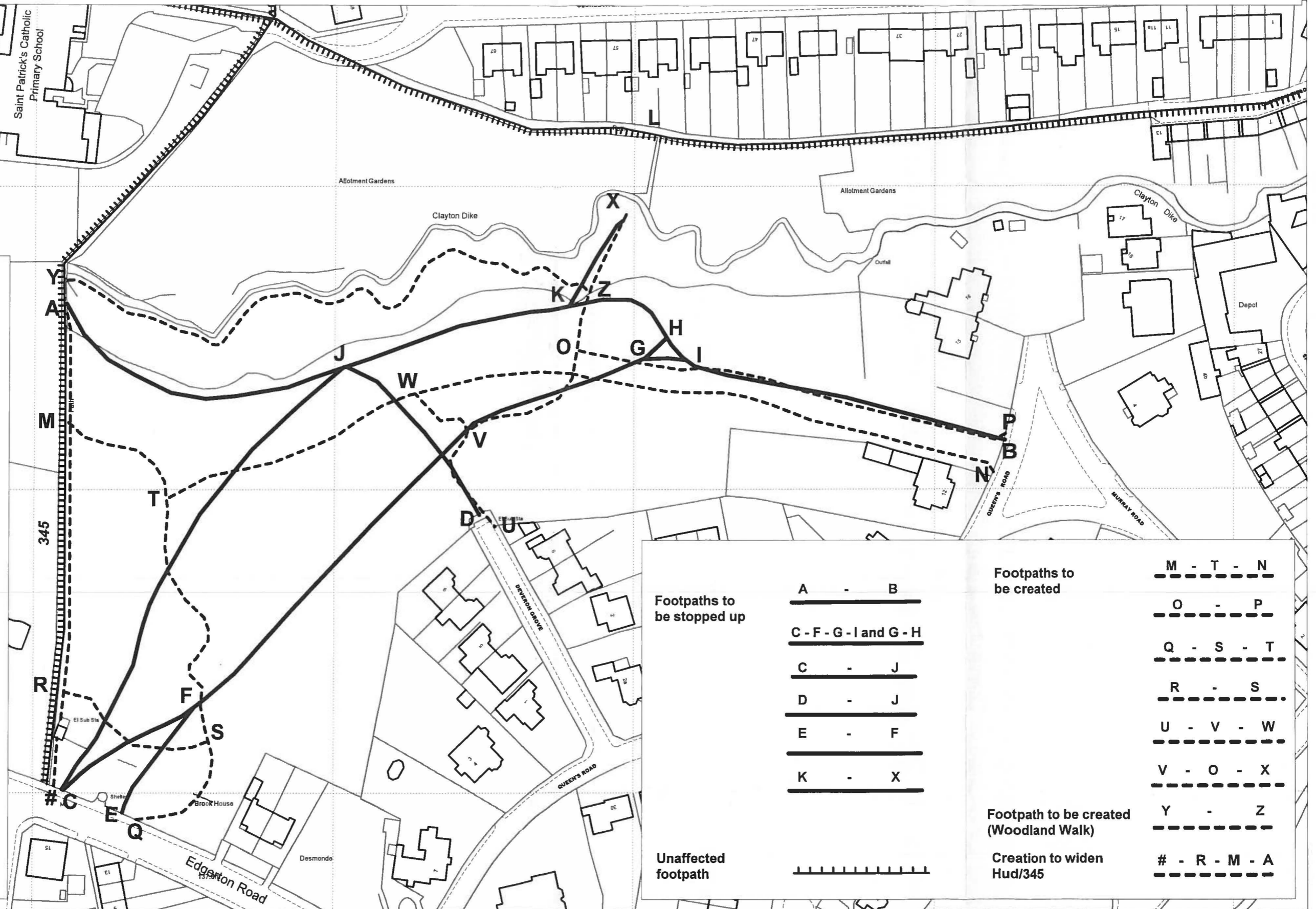
*Width 1.8 metres*

Footpath adjacent to Huddersfield 345

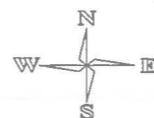
A footpath generally 2.5 metres wide (excluding the sub-station) abutting the eastern side of footpath Huddersfield 345 shown on the plan annexed hereto by the bold dashed line commencing at point # at grid reference 1320 1760 and proceeding in a northerly direction for 158 metres via points R at grid reference 1320 1763 and M at grid reference 1321 1772 to point A at grid reference 1321 1776.

Town & Country Planning Act 1990, section 257. Stopping up of footpaths at Clayton Fields, Edgerton and provision of alternative footpath routes

- Grid references**
- Point A - SE 1321 1776
  - Point B - SE 1352 1771
  - Point C - SE 1320 1760
  - Point D - SE 1334 1769
  - Point E - SE 1322 1759
  - Point F - SE 1325 1762
  - Point G - SE 1340 1774
  - Point H - SE 1341 1775
  - Point I - SE 1341 1774
  - Point J - SE 1330 1774
  - Point K - SE 1337 1776
  - Point L - SE 1340 1781
  - Point M - SE 1321 1772
  - Point N - SE 1352 1770
  - Point O - SE 1338 1774
  - Point P - SE 1352 1771
  - Point Q - SE 1323 1759
  - Point R - SE 1320 1763
  - Point S - SE 1325 1761
  - Point T - SE 1324 1769
  - Point U - SE 1335 1768
  - Point V - SE 1334 1772
  - Point W - SE 1332 1773
  - Point X - SE 1339 1779
  - Point Y - SE 1321 1777
  - Point Z - SE 1338 1776
  - Point # - SE 1320 1760



<p><b>Footpaths to be stopped up</b></p> <p>A - B</p> <p>C - F - G - I and G - H</p> <p>C - J</p> <p>D - J</p> <p>E - F</p> <p>K - X</p>	<p><b>Footpaths to be created</b></p> <p>M - T - N</p> <p>O - P</p> <p>Q - S - T</p> <p>R - S</p> <p>U - V - W</p> <p>V - O - X</p> <p>Y - Z</p>	
		<p><b>Footpath to be created (Woodland Walk)</b></p> <p># - R - M - A</p>
		<p><b>Creation to widen Hud/345</b></p>
		<p><b>Unaffected footpath</b></p>



**Kirklees Council (Clayton Fields, Edgerton)  
Public Path Stopping Up order 2018**

**Kirklees Council  
Legal Services  
2nd Floor  
High Street Buildings  
High Street  
Huddersfield  
HD1 2ND**