

Green Belt and Green Space

- Green Belt
- Strategic Green Infrastructure Proposal (SGI)
- Urban Green Space (UG)
- Local Green Space (LoGS)

Housing, Employment & Other Significant Development

- Employment (ES)
- Priority Employment Areas (PEA)
- Housing (HS)
- Mixed Use (MXS)
- Land at Storthes Hall (MDGB)
- Gypsies And Travellers & Travelling Showpeople (GTTS)
- Safeguarded Land (SLS)

Heritage Assets

- Archaeological Sites (Class 2) (AS)
- Conservation Area
- Registered Battlefield (RB)

Heritage Assets (cont'd)

- Registered Parks and Gardens (RPG)
- Scheduled Monuments (SM)

Minerals & Waste

- Minerals Areas of Search (MAS)
- Minerals Extraction Sites (MES)
- Minerals Preferred Areas (MPA)
- Minerals Infrastructure (MIS)
- Waste Site (W)
- Waste Site (Safeguarded) (WS)

Natural Environment

- Peak District National Park
- Special Protection Area (INDS1)
- Special Area of Conservation (INDS2)
- Site of Special Scientific Interest (NDS)
- Local Wildlife Sites (LWS)
- Local Geological Sites (LGS)
- Dark Peak Nature Improvement Area

Shopping Centres

- Principal Town Centre
- Town Centre
- District Centre
- Local Centre

Transport

- Highways England Transport Scheme

Core Walking, Cycling and Riding Network

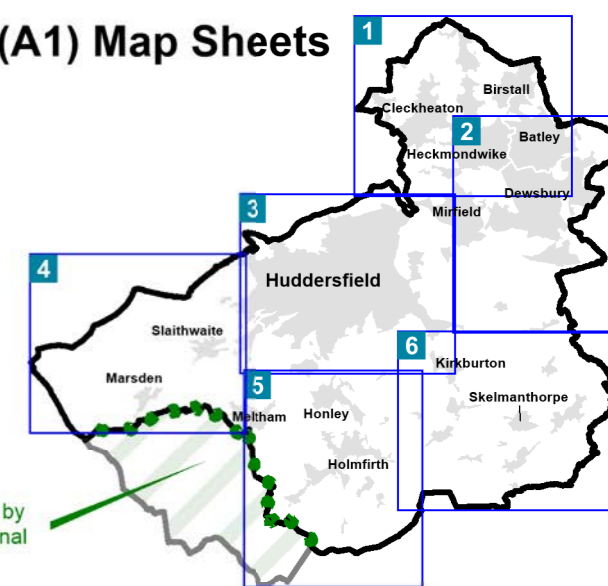
- Existing
- Proposed

Transport Scheme (TS)

- Junction improvement
- Committed transport improvement scheme route
- Mirfield to Dewsbury to Leeds & North Kirklees Growth Zone

Site references relate to allocations and policies in: Kirklees Local Plan - Allocations & Designations and Strategy & Policies - Adopted 27 February 2019

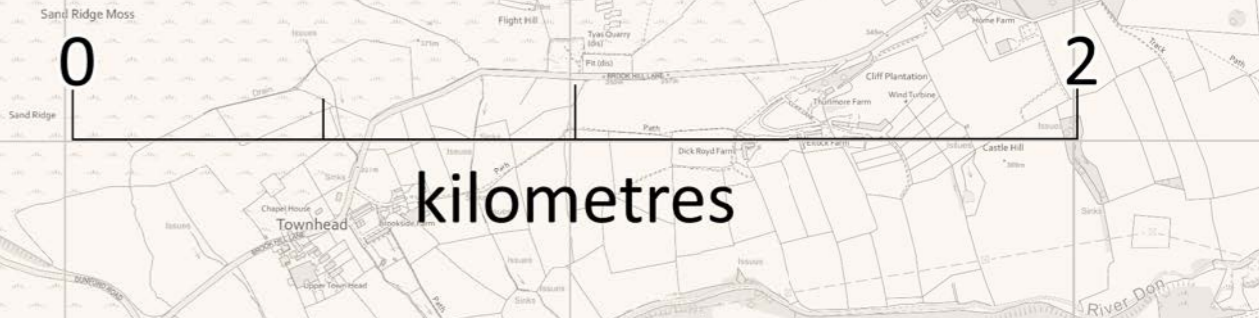
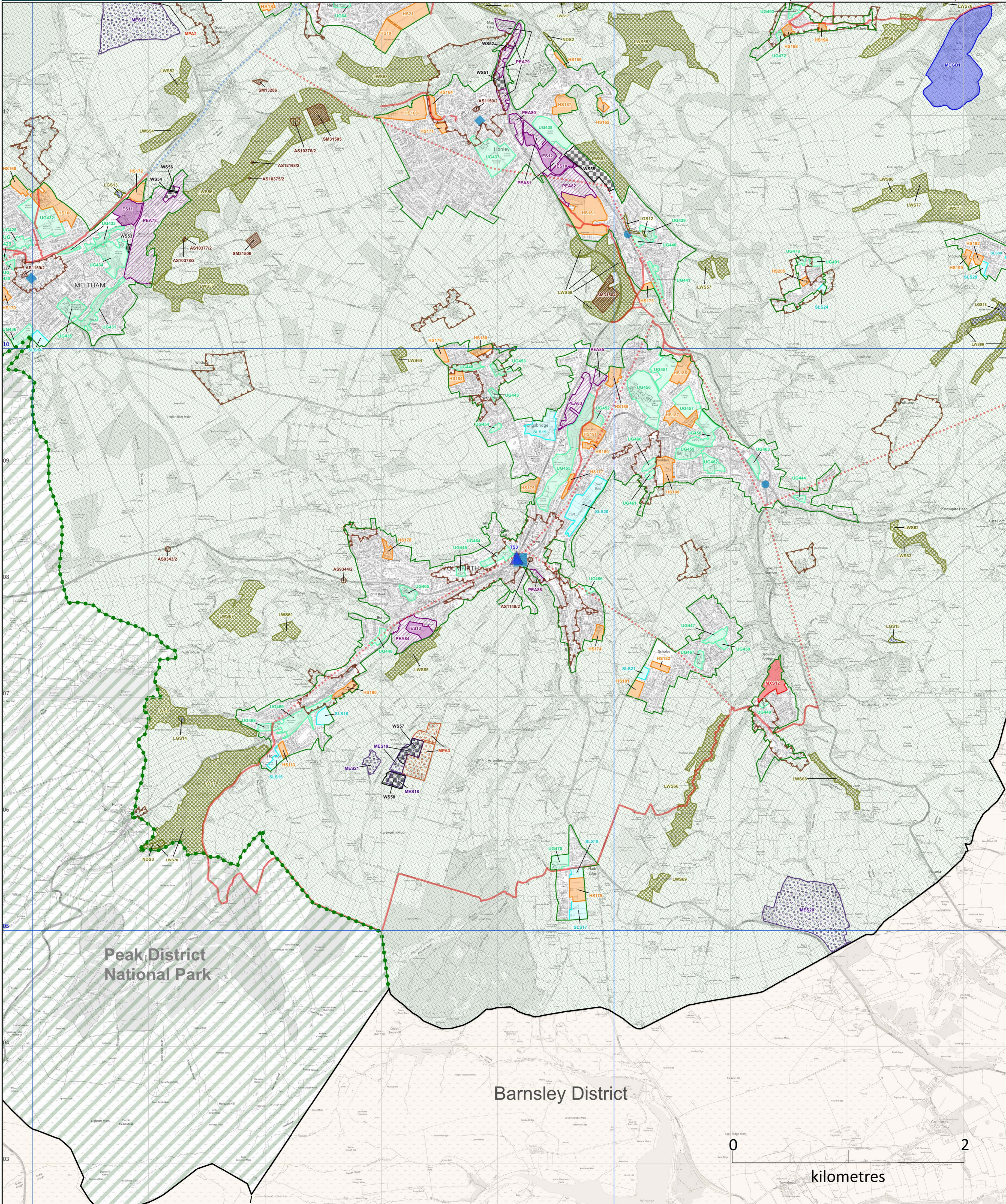
Index to (A1) Map Sheets



Area administered by Peak District National Park Authority

Map scale: 1:15,000 @ A1

© Crown Copyright and database right 2019. Ordnance Survey 100019241



kilometres

Thurstone Moors