

Huddersfield

Policies Map  
Kirklees Local Plan - Adopted 27 February 2019

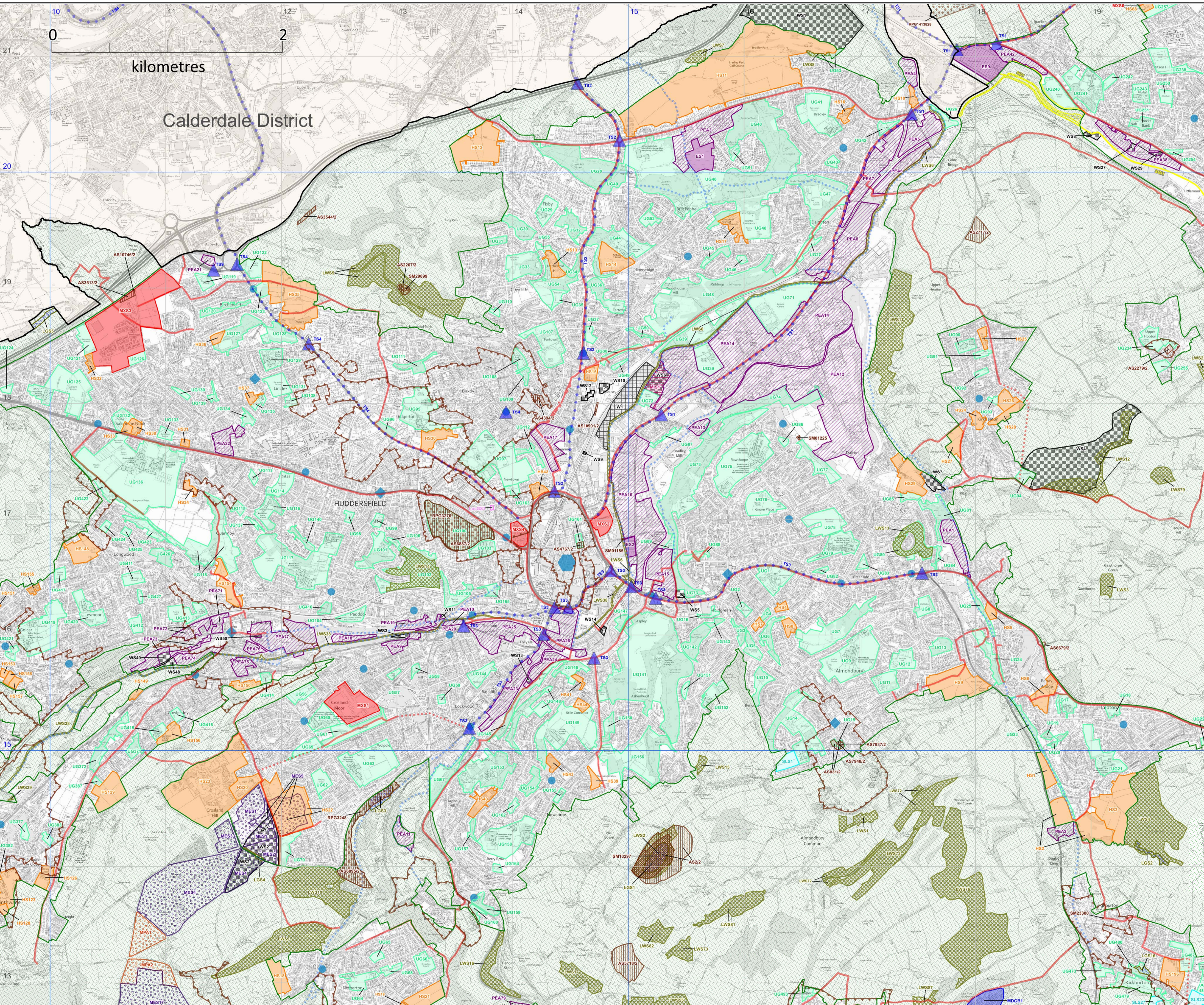
- Green Belt and Green Space**
- Green Belt
  - Strategic Green Infrastructure Proposal (SGI)
  - Urban Green Space (UG)
  - Local Green Space (LoGS)
- Housing, Employment & Other Significant Development**
- Employment (ES)
  - Priority Employment Areas (PEA)
  - Housing (HS)
  - Mixed Use (MXS)
  - Land at Storches Hall (MDGB)
  - Gypsies And Travellers & Travelling Showpeople (GTS)
  - Safeguarded Land (SLS)
- Heritage Assets**
- Archaeological Sites (Class 2) (AS)
  - Conservation Area
  - Registered Battlefield (RB)
  - Registered Parks and Gardens (RPG)
  - Scheduled Monuments (SM)
- Minerals & Waste**
- Minerals Areas of Search (MAS)
  - Minerals Extraction Sites (MES)
  - Minerals Preferred Areas (MPA)
  - Minerals Infrastructure (MIS)
  - Waste Site (W)
  - Waste Site (Safeguarded) (WS)
- Natural Environment**
- Peak District National Park
  - Special Protection Area (INDS1)
  - Special Area of Conservation (INDS2)
  - Site of Special Scientific Interest (NDS)
  - Local Wildlife Sites (LWS)
  - Local Geological Sites (LGS)
  - Dark Peak Nature Improvement Area
- Shopping Centres**
- Principal Town Centre
  - Town Centre
  - District Centre
  - Local Centre
- Transport**
- Highways England Transport Scheme
- Core Walking, Cycling and Riding Network**
- Existing
  - Proposed
- Transport Scheme (TS)**
- Junction improvement
  - Committed transport improvement scheme route
  - Mirfield to Dewsbury to Leeds & North Kirklees Growth Zone

Site references relate to allocations and policies in: Kirklees Local Plan - Allocations & Designations and Strategy & Policies - Adopted 27 February 2019

Map scale: 1:15,000 @ A1  
© Crown Copyright and database right 2019. Ordnance Survey 100019241

**Kirklees Local Planning Authority: Index to (A1) Map Sheets**

Area administered by Peak District National Park Authority



0 2 kilometres  
Calderdale District