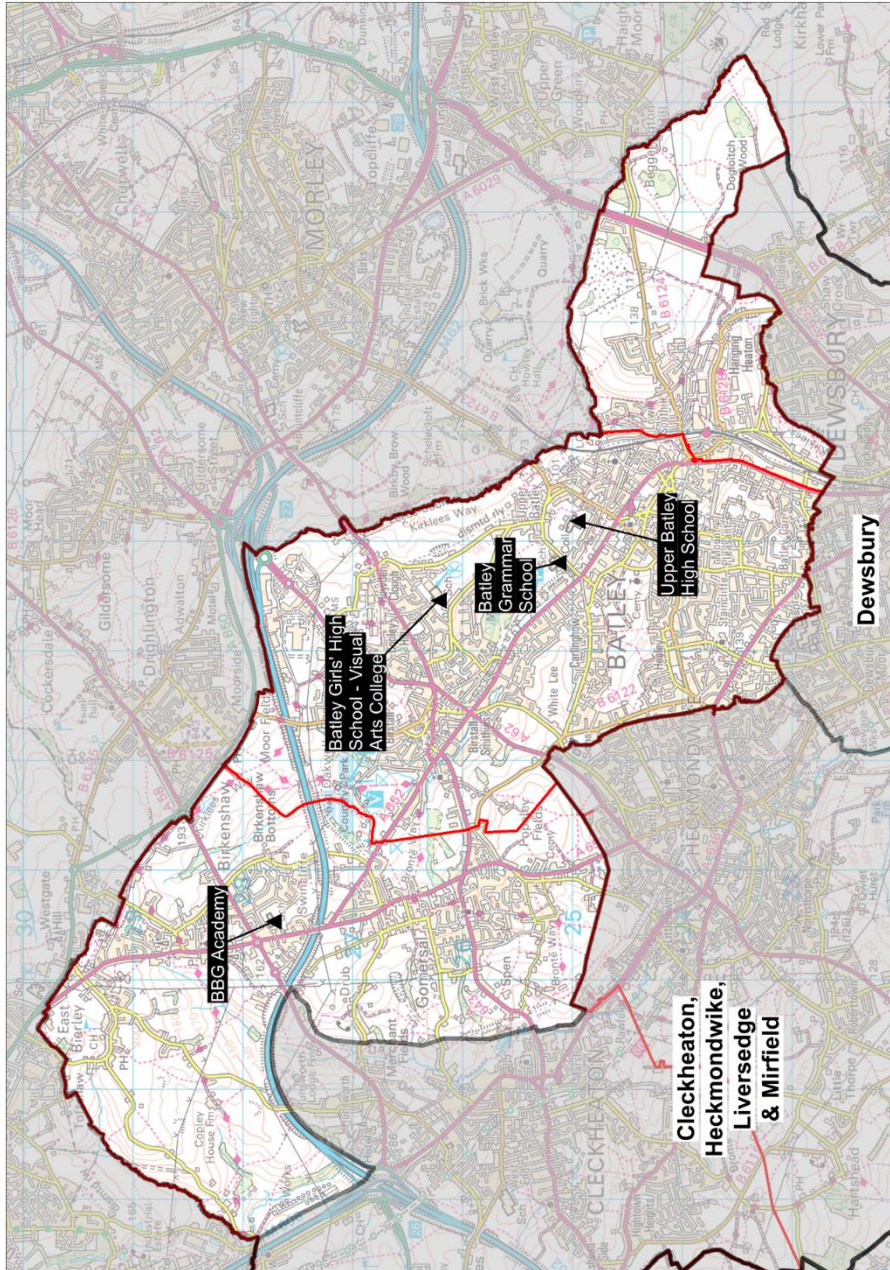


Planning Area 24: Batley, Birkenshaw, Birstall & Gomersal



Contains Ordnance Survey data
© Crown Copyright and database right 2023

- ❖ Batley Girls' High School – Visual Arts College
- ❖ Batley Grammar School
- ❖ BBG Academy
- ❖ Upper Batley High School

Overview: Table B on page 224 and the chart on page 222 illustrate that the future year 7 cohort size of young people resident in this planning area will continue to decline with some fluctuations. In the wider area of North Kirklees, there has been a period of high demand where a significant number of planned bulge places were required. Beyond 2024, it is likely that far fewer bulge places, if any, will be needed.

There are two schools in this planning area that offer single gender provision which are Batley Girls' High School and Upper Batley High School. There is co-educational provision at Batley Grammar School and BBG Academy. This planning area is adjacent to two neighbouring local authorities and there has been a well-established trend of outward migration of secondary aged pupils to Leeds with some inward flow from Bradford. Part of this planning area is in the priority admission area of Whitcliffe Mount, A SHARE Academy which accounts for some of the movement of pupils to Cleckheaton, Heckmondwike, Liversedge & Mirfield (planning area 25).

In 2022/23 At national offer day, Batley Girls' High School, Batley Grammar School, BBG Academy and Upper Batley High School were all full. Upper Batley High School and Batley Girls' High each offered an additional 10 bulge places over PAN, taking the number of places offered at Batley Girls' High School to 243 and at Upper Batley High School to 160.

In 2023/24 At national offer day, Batley Girls' High School, Batley Grammar School, BBG Academy and Upper Batley High School were all full. Again, Batley Girls' High School and Upper Batley High School each offered an additional 10 bulge places, taking the number of places offered at Batley Girls' High School to 243 and at Upper Batley High School to 160. The pattern of pupil distribution illustrates that around 61% of children that live in this planning area attend schools in the area, around 18% are securing places in neighbouring planning areas, particularly Cleckheaton, Heckmondwike, Liversedge & Mirfield and Dewsbury, and around 14% attend schools in other local authorities. Around 24% of pupils attending schools here are from neighbouring planning areas and 3% from other LAs.

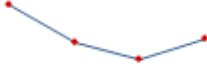
For 2024, 2025 and 2026 NHS population data suggest a continuing decline. Population recovers slightly in 2026, but not above previous levels, and continues to decline thereafter.

Given the complex pattern of provision across the borough and the pupil distribution trends, a strategic approach has been taken across a wider geographical area. The North Kirklees planning areas of Cleckheaton, Heckmondwike, Liversedge, Mirfield and Dewsbury are being considered together in terms of growth in demand and solutions to address this.

In the period leading up to the 2022 population peak there was high demand for places in the wider area of North Kirklees. Through the goodwill and collaboration of the Kirklees school system, this was managed by the carefully planned introduction of bulge places rather than the introduction of a new school. These bulge classes are still working their way through the school system and this does continue to present some challenges to in-year pupil movement. However, the pressure on Year 7 places will begin to ease as the population declines.

There is one housing development in this planning area where building work on approximately 320 dwellings has commenced and is expected to be complete in around seven years. Looking longer term (+5 years), there is a strategic development site in the Kirklees Local Plan on the border of this planning area and the Dewsbury planning area. The demand for places

generated by this will need monitoring over a number of years, alongside the expected decline in population.

Place planning summary for Planning Area 24. Batley, Birkenshaw, Birstall & Gomersal	
Place planning data for five cohorts of children: Years 7,8,9,10,11 From NHS Oct 2022 and School Census Jan 2023 Note numbers in [square brackets] show the average number of children per year group	
4509 [902] children live in this PA (NHS) <ul style="list-style-type: none"> 2742 [548] go to schools in this PA 791 [158] go to schools in other Kirklees PAs 70 [14] go to schools in non-mainstream provisions 610 [122] go to schools in other LAs 296 [59] are unknown 	3747 [749] children go to school in this PA (Census) <ul style="list-style-type: none"> 2742 [548] Live in this PA 898 [180] Live in other PAs 107 [21] Live outside Kirklees
Average number of places used per year group Number of Year 7 places available Trend in number of children living in this PA per year group	749 753  Slight decline with fluctuations
Place planning strategy (assuming current patterns of migration, housing occupancy, parental preference etc) <ul style="list-style-type: none"> Based on population data the projected need for places is within the capacity of available places On balance, more children travel IN to schools in the PA from neighbouring PAs than travel out to schools in other PAs In the wider area of North Kirklees, there has been a period of high demand where a significant number of planned bulge places were required. In future, it is likely that far fewer bulge places, if any, will be needed. 	

Planning Area 24. Batley, Birkenshaw, Birstall & Gomersal

Table C: Where do children living in the Batley, Birkenshaw, Birstall & Gomersal planning area go to school?

Years 7-11 (Jan 2023)

School Attended	Birkenshaw CE(C) Primary School	Birstall Primary Academy	Carlinghow Academy	East Bierley CE(VC) Primary School	Field Lane J I & N School	Fieldhead Primary Academy	Gomersal St Mary's CE(VC) Primary School / Gomersal Primary School	Healey J I & N School	Lydgate J & I School	Manorfield I & N School / Staincliffe CE (VC) Junior School	Mill Lane Primary School	Park Road J I & N School	Purtwell I & N School / Hyrstmount Junior School	Warwick Road Primary School	Windmill Church of England Primary School	Grand Total
All Saints Catholic College			2		1											3
Batley Girls High School	1	4	70		48	10	1	72	48	201	9	40	100	65	16	685
Batley Grammar School	2	26	165	1	9	22	3	86	33	111	7	60	47	29	53	654
BBG Academy	290	67	13	78		109	307		2						18	884
Castle Hall Academy		1	3	1		1	2			6			4			18
Heckmondwike Grammar School	12	5	9	4	1	1	26	12	8	23	3	6	6	6	20	142
Manor Croft Academy			9		1			11	19	10	23	3	2	3		81
Moor End Academy										1						1
Netherhall Learning Campus High School										1						1
Newsome Academy			2						1	1						4
Royds Hall, A Share Academy							1	1								2
Spenn Valley High School	1	3	7			4	8	5		7	2				1	38
St John Fisher Catholic Voluntary Academy	4	16	70		1	16	13	51	17	60	10	4	4	10	12	288
The Mirfield Free Grammar		4	4	1		1		3		1			1			15
Thornhill Community Academy, A SHARE Academy		2	2			1		2	1		1	1				10
Upper Batley High School	1	4	45		40	7	2	62	29	133	6	44	98	47	1	519
Westborough High School		1	3			3		16	3	23		2	3	6		60
Whitcliffe Mount, A SHARE Academy	8	5	5	2		3	102	1		1					1	128
Grand Total	319	138	409	87	101	178	465	322	161	579	61	160	265	166	122	3533

Planning Area 24. Batley, Birkenshaw, Birstall & Gomersal

Table D: Where do children attending school in Batley, Birkenshaw, Birstall & Gomersal live?

Years 7-11 (Jan 2023)

PAA of Residence	School Attended				
	Batley Girls High School	Batley Grammar School	BBG Academy	Upper Batley High School	Grand Total
Ashbrow School	1				1
Battysford CE (VC) Primary School				1	1
Birkby I & N School / Birkby Junior School	1			1	2
Birkenshaw CE(C) Primary School	1	2	290	1	294
Birstall Primary Academy	4	26	67	4	101
Boothroyd Primary Academy	17	1		11	29
Carlinghow Academy	70	165	13	45	293
Carlton J & I School	49	8		50	107
Christ Church CE Academy	2			1	3
Co-op Academy Smithies Moor	83	19	5	32	139
Crossley Fields J & I School			2		2
Crowlees CE (VC) J & I School		1			1
Diamond Wood Community Academy / Ravensthorpe CE (VC) Junior School	11	4		11	26
Earlsheaton Infant School / Bywell CE (VC) Junior School	1			2	3
East Bierley CE(VC) Primary School		1	78		79
Eastborough J I & N School	8	2			10
Field Lane J I & N School	48	9		40	97
Fieldhead Primary Academy	10	22	109	7	148
Gomersal St Mary's CE(VC) Primary School / Gomersal Primary School	1	3	307	2	313
Hanging Heaton CE (VC) J & I School	1	4		2	7
Hartshead J & I School			1		1
Headlands CE (VC) J I & N School			3	1	4
Healey J I & N School	72	86		62	220
Heaton Avenue, A SHARE Primary Academy	1		3		4
Heckmondwike Primary School	112	21	4	20	157
High Bank J I & N School			4	1	5
Hightown J I & N School	3	2		2	7
Hillside Primary School				1	1
Hopton Primary School		1			1
Howard Park Community School	3	1	2	2	8
Littleton J I & N School			2		2
Lydgate J & I School	48	33	2	29	112
Manorfield I & N School / Staincliffe CE (VC) Junior School	201	111		133	445
Mill Lane Primary School	9	7		6	22
Millbridge, A SHARE Primary Academy	23	7	7	16	53
Moldgreen Community Primary School				1	1
Norristhorpe J & I School	11	2	2		15
Old Bank Academy			2	1	3
Orchard Primary Academy	1			1	2
Overthorpe C of E Academy		3			3
Park Road J I & N School	40	60		44	144
Pentland I & N School / Headfield CE (VC) Junior School	7	2		7	16
Purlwell I & N School / Hyrstmount Junior School	100	47		98	245
Roberttown CE (VC) J & I School	1		1		2
Savile Town CE(VC) I & N School / Headfield CE (VC) Junior School	6	1		2	9
Scholes Village Primary School			1		1
Shaw Cross I & N School / Bywell CE (VC) Junior School	9	2		3	14
Shelley First School			1		1
Spring Grove J I & N School	1				1
St John's CE(C) Primary School / Westmoor Primary School KS2	33	31		22	86
Thornhill J & I School	1	2		3	6
Thornhill Lees CE (VC) I & N School / Headfield CE (VC) Junior School	36	6		24	66
Warwick Road Primary School	65	29		47	141
Westmoor Primary School	31	15	2	20	68
Whitechapel Church of England Primary School	1	3	16	1	21
Windmill Church of England Primary School	16	53	18	1	88
Grand Total	1139	792	942	767	3640

Tables E(i) to E(iii) below show how Year 7 places were allocated in this planning area at each of the last three National Offer Days, compared to the number of Year 7 places available at each school and the number of applicants resident in each school's Priority Admission Area (PAA). Blanks in the tables indicate a school does not have a PAA.

Table E(i)

Batley Girls' High School and Upper Batley High School each offered an additional 10 bulge places over PAN.

2023/24	No of Places	Total No of applicants living in PAA	Place allocated				Place allocated		
			Resident in Priority Admission Area allocated	Resident in Planning Area allocated	Resident outside Planning Area allocated	TOTAL No of places allocated	Resident in Priority Admission Area allocated	Resident in Planning Area allocated	Resident outside Planning Area allocated
Batley, Birkenshaw, Birstall & Gomersal									
BBG Academy	210			37	173	210		17.6%	82.4%
Batley Girls High School	243	636	147		96	243	60.5%		39.5%
Upper Batley High School	160		116		44	160	72.5%		27.5%
Batley Grammar School	160			123	37	160		76.9%	23.1%
	773	636	263	160	350	773	34.0%	20.7%	45.3%

Table E(ii)

Batley Girls' High School and Upper Batley High School each offered an additional 10 bulge places over PAN.

2022/23	No of Places	Total No of applicants living in PAA	Place allocated				Place allocated		
			Resident in Priority Admission Area allocated	Resident in Planning Area allocated	Resident outside Planning Area allocated	TOTAL No of places allocated	Resident in Priority Admission Area allocated	Resident in Planning Area allocated	Resident outside Planning Area allocated
Batley, Birkenshaw, Birstall & Gomersal									
BBG Academy	210			39	171	210		18.6%	81.4%
Batley Girls High School	243	637	139		104	243	57.2%		42.8%
Upper Batley High School	160		99		61	160	61.9%		38.1%
Batley Grammar School	160			122	38	160		76.3%	23.8%
	773	637	238	161	374	773	30.8%	20.8%	48.4%

Table E(iii)

Upper Batley High School offered an additional 10 bulge places over PAN.

2021/22	No of Places	Total No of applicants living in PAA	Place allocated				Place allocated		
			Resident in Priority Admission Area allocated	Resident in Planning Area allocated	Resident outside Planning Area allocated	TOTAL No of places allocated	Resident in Priority Admission Area allocated	Resident in Planning Area allocated	Resident outside Planning Area allocated
Batley, Birkenshaw, Birstall & Gomersal									
BBG Academy	210			33	177	210		15.7%	84.3%
Batley Girls' High School	233	324	112		122	234	47.9%		52.1%
Upper Batley High School	160	278	94		66	160	58.8%		41.3%
Batley Grammar School	160			135	25	160		84.4%	15.6%
	763	602							