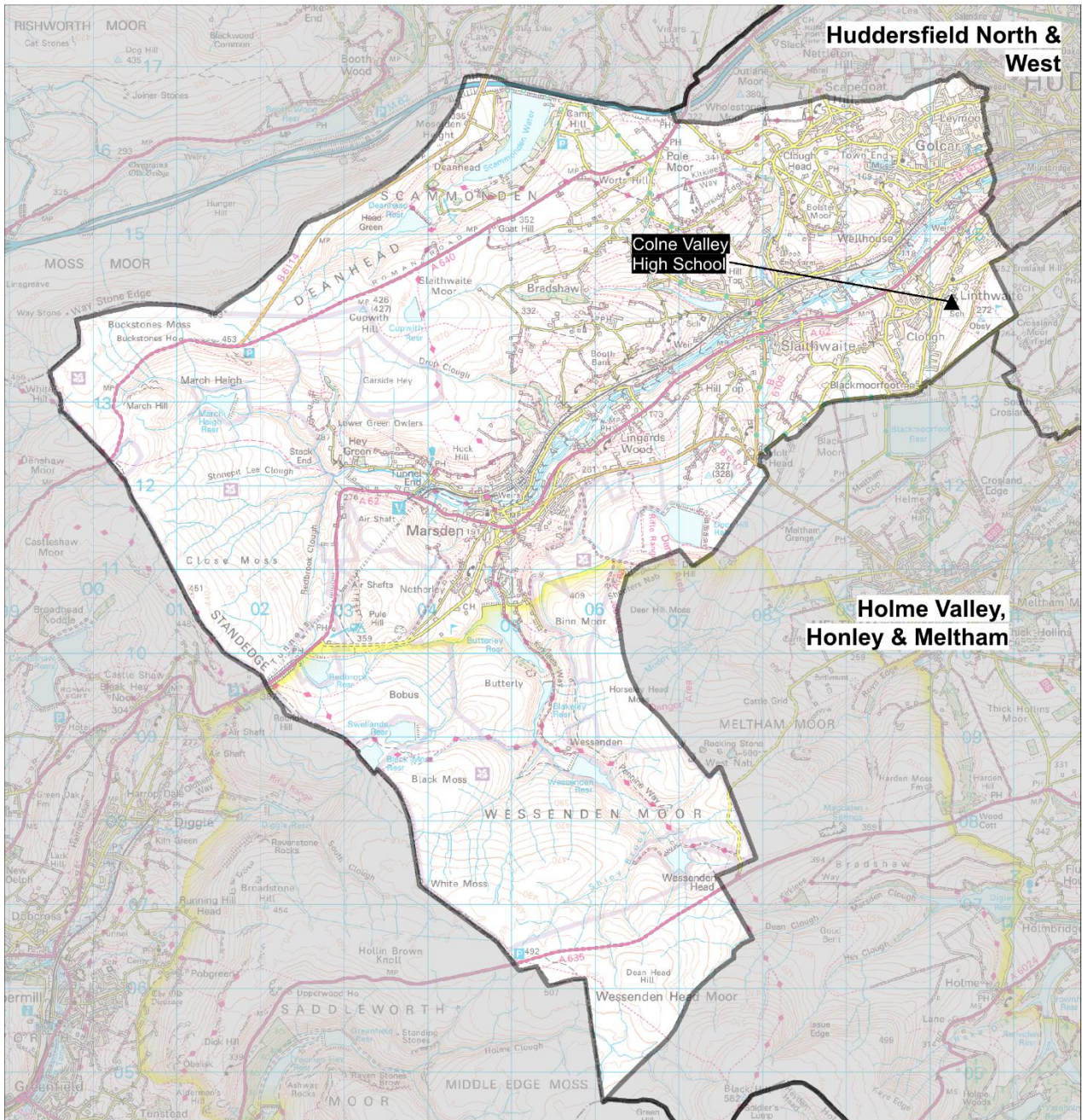


# Planning Area 26: Colne Valley



Contains Ordnance Survey data  
© Crown Copyright and database right 2023

❖ Colne Valley High School

**Overview:** Table B on page 224 and the chart on page 222 illustrate that the future year 7 cohort sizes of young people resident in this planning will on balance slightly decline, with some fluctuations. Colne Valley High School serves a wide geographical area made up from rural and semi-rural areas.

**In 2022/23** on national offer day there were no vacancies.

**In 2023/24** on national offer day there were, again, no vacancies.

There remains modest pupil movement in and out of the planning area. This is partly attributed to the children living in this planning area who were formerly pupils at Lily Park, a SHARE Primary Academy. In October 2022, the Regional Schools Commissioner approved a proposal by SHARE Multi-Academy Trust to discontinue the provision of primary education at Lily Park. Lily Park was part of Royds Hall, an all-through school with an age range of 4-16 years situated in the Huddersfield South West primary planning area. Following the RSC's decision, all Royds Hall's primary provision has been delivered from its Luck Lane site in the Huddersfield South West planning area.

Pupils who were on roll at Lily Park were offered places at Luck Lane, a SHARE Academy. The former Priority Admission Area for Lily Park became the Priority Admission Area for Luck Lane with effect from 2023/24.

Because Royds Hall is an all-through school, pupils on roll in its primary phase have had an automatic right to continue their education in its secondary phase. However, in October 2023, the DfE Regional Director (formerly the Regional Schools Commissioner) approved a proposal by SHARE Multi-Academy Trust to de-amalgamate Luck Lane and Royds Hall to create two separate schools. This change, which is not expected to take place until after National Offer Day 2024, will mean pupils at Luck Lane will no longer automatically be allocated a place at Royds Hall, although they will still be of high priority for a place according to its oversubscription criteria.

The pattern of pupil distribution illustrates that 77% of children who live in this planning area attend schools in the area, whilst 13% are securing places in neighbouring planning areas. 18% of pupils attending school here are from neighbouring planning areas.

**For 2024, 2025 and 2026** NHS population data suggests a slight decline in population. Beyond this period, there is evidence to suggest a future population peak in 2027 only. There is one site with planning permission for 125 dwellings that has commenced and is expected to be complete in around three years. It is not anticipated there is a need for establishing additional places.

## Place planning summary for Planning Area 26. Colne Valley

Place planning data for five cohorts of children: Years 7,8,9,10,11

From NHS Oct 2022 and School Census Jan 2023

Note numbers in [square brackets] show the **average** number of children per year group

### 1502 [300] children live in this PA (NHS)

- 1164 [233] go to schools in this PA
- 202 [40] go to schools in other Kirklees PAs
- 19 [4] go to schools in non-mainstream provisions
- 48 [10] go to schools in other LAs
- 69 [14] are unknown

### 1426 [285] children go to school in this PA (Census)

- 1164 [233] Live in this PA
- 259 [52] Live in other PAs
- 3 [1] Live outside Kirklees

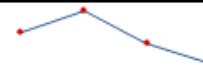
Average number of places used per year group

Number of Year 7 places available

Trend in number of children living in this PA per year group

285

287



**Slight decline with fluctuations**

Place planning strategy (assuming current patterns of migration, housing occupancy, parental preference etc)

- Based on population data the projected need for places is within the capacity of available places
- On balance, slightly more children travel IN to schools in the PA from neighbouring PAs than travel out to schools in other PAs
- No need for additional places

## Planning Area 26. Colne Valley

Table C: Where do children living in the Colne Valley planning area go to school?

Years 7-11 (Jan 2023)

School Attended	Clough Head J & I School	Golcar J I & N School	Linthwaite Clough J I & Early Years Unit	Luck Lane, A SHARE Primary Academy	Marsden I & N School / Marsden Junior School	Nields J I & N School	Scapegoat Hill J & I School	Slaithwaite CE (VC) J & I School	Wellhouse J & I School	Wilberlee J & I School	Grand Total
All Saints Catholic College		4	3	1		1		2	1		12
Colne Valley High School	25	201	301	101	240	96	29	104	19	48	1164
Heckmondwike Grammar School		1	1								2
Holmfirth High School		1	1		2	2					6
Honley High School		3	11	1	9	3		2		2	31
Moor End Academy			4	5	2	2		2			15
Netherhall Learning Campus High School				2	1			1			4
Newsome Academy		1	3	2		1				1	8
North Huddersfield Trust School				1	1						2
Royds Hall, A Share Academy		18	4	54				2	1		79
Salendine Nook High School Academy		11	4	21	1		5		1		43
<b>Grand Total</b>	<b>25</b>	<b>240</b>	<b>332</b>	<b>188</b>	<b>256</b>	<b>105</b>	<b>34</b>	<b>113</b>	<b>22</b>	<b>51</b>	<b>1366</b>



## Planning Area 26. Colne Valley

**Table D: Where do children attending school in Colne Valley live?**

Years 7-11 (Jan 2023)

School Attended

PAA of Residence	School Attended	
	Colne Valley High School	Grand Total
All Hallows' CE (VA) Primary School / Hill View Academy KS2	3	3
Birkby I & N School / Birkby Junior School	2	2
Christ Church CE Academy	1	1
Clough Head J & I School	25	25
Crow Lane Primary and Foundation Stage School	38	38
Dalton Junior Infant and Nursery School	2	2
Farnley Tyas CE (VC) First School	1	1
Golcar J I & N School	201	201
Hillside Primary School	1	1
Lindley Church of England Infant School / Lindley Junior School	2	2
Linthwaite Clough J I & Early Years Unit	301	301
Lowerhouses CE (VC) Junior Infant and Early Years School	1	1
Luck Lane, A SHARE Primary Academy	101	101
Marsden I & N School / Marsden Junior School	240	240
Meltham CE (VC) Primary School	7	7
Meltham Moor Primary School	19	19
Moorlands Primary School	6	6
Mount Pleasant Primary School	1	1
Netherton I & N School / South Crosland CE (VA) Junior School	1	1
Nields J I & N School	96	96
Oak CE (VC) Primary School (Junior)/Beaumont Primary Academy	40	40
Paddock J I & N School	14	14
Reinwood I & N School / Reinwood Community Junior School	3	3
Scapegoat Hill J & I School	29	29
Slaithwaite CE (VC) J & I School	104	104
Spring Grove J I & N School	4	4
St Thomas CE (VC) Primary School	1	1
Upperthong J & I School	1	1
Wellhouse J & I School	19	19
Wilberlee J & I School	48	48
Woodside Green, A SHARE Primary Academy	111	111
<b>Grand Total</b>	<b>1423</b>	<b>1423</b>

Tables E(i) to E(iii) below show how Year 7 places were allocated in this planning area at each of the last three National Offer Days, compared to the number of Year 7 places available at each school and the number of applicants resident in each school's Priority Admission Area (PAA). Blanks in the tables indicate a school does not have a PAA.

**Table E(i)**

2023/24	No of Places	Total No of applicants living in PAA	Place allocated				Place allocated		
			Resident in Priority Admission Area allocated	Resident in Planning Area allocated	Resident outside Planning Area allocated	TOTAL No of places allocated	Resident in Priority Admission Area allocated	Resident in Planning Area allocated	Resident outside Planning Area allocated
<b>Colne Valley</b>									
Colne Valley High School	287	274	228		59	287	79.4%		20.6%
	287	274	228		59	287	79.4%		20.6%

**Table E(ii)**

2022/23	No of Places	Total No of applicants living in PAA	Place allocated				Place allocated		
			Resident in Priority Admission Area allocated	Resident in Planning Area allocated	Resident outside Planning Area allocated	TOTAL No of places allocated	Resident in Priority Admission Area allocated	Resident in Planning Area allocated	Resident outside Planning Area allocated
<b>Colne Valley</b>									
Colne Valley High School	287	291	235		52	287	81.9%		18.1%
	287	291	235		52	287	81.9%		18.1%

**Table E(iii)**

2021/22	No of Places	Total No of applicants living in PAA	Place allocated				Place allocated		
			Resident in Priority Admission Area allocated	Resident in Planning Area allocated	Resident outside Planning Area allocated	TOTAL No of places allocated	Resident in Priority Admission Area allocated	Resident in Planning Area allocated	Resident outside Planning Area allocated
<b>Colne Valley</b>									
Colne Valley High School	287	283	240		47	287	83.6%		16.4%
	287	283							