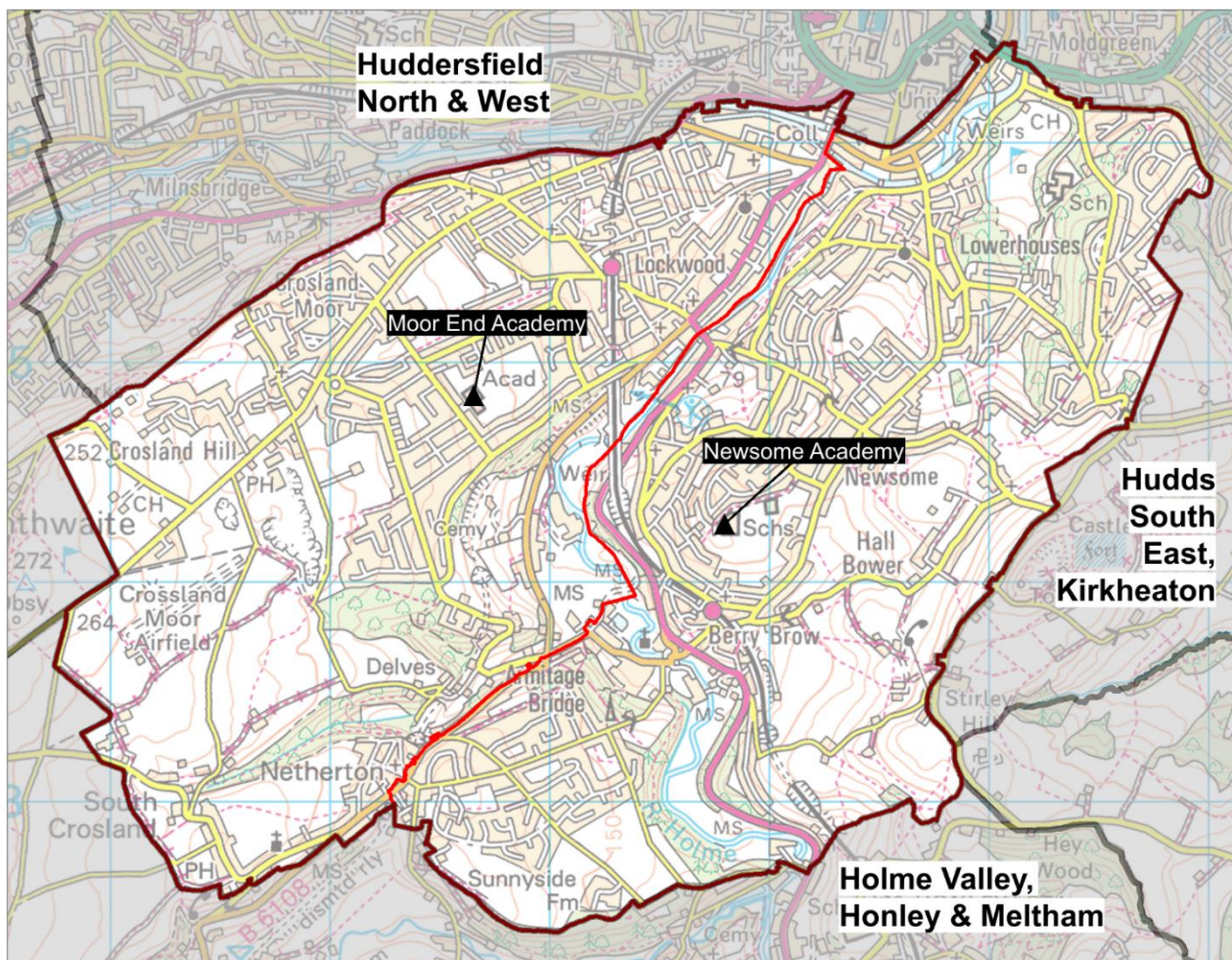


## Planning Area 32: Huddersfield South West



Contains Ordnance Survey data  
© Crown Copyright and database right 2023

- ❖ Moor End Academy
- ❖ Newsome Academy

**Overview:** Table B on page 224 and the chart on page 222 illustrate that the future year 7 cohort size of young people resident in this planning area is expected to be broadly static, with some fluctuations.

Newsome Academy is situated to the east of the planning area and Moor End Academy to the west of the planning area.

**In 2022/23** at national offer day all places were allocated at Moor End Academy and Newsome Academy had a number of vacancies.

**In 2023/24** additional capacity as a bulge year was added in this planning area, with an additional 10 places at Newsome Academy over its PAN of 180. At national offer day all places were allocated at Moor End Academy and Newsome Academy had a very small number of vacancies. Post-national offer day, but before the initial round of reallocations, a further five bulge places over a PAN of 210 were introduced at Moor End Academy taking the number of places offered to 215.

The pattern of pupil distribution illustrates that around 62% of children who live in this planning area attend schools in the area, whilst 27% are securing places in neighbouring planning areas. 21% of pupils attending school here are from neighbouring planning areas.

**For 2024, 2025 and 2026** NHS population data continue to suggest a broadly static position.

There are two housing sites in this area where development has commenced. One site providing 200 dwellings is expected to be complete in 2024, with a second site providing 250 dwellings expected to be in around three years. There is a further large housing development site providing 770 dwellings where building has not yet commenced, along with another significant housing development site proposed in the Local Plan, both of which could impact this planning area and require additional places in the future.

## Place planning summary for Planning Area 32. Huddersfield South West

Place planning data for five cohorts of children: Years 7,8,9,10,11

From NHS Oct 2022 and School Census Jan 2023

Note numbers in [square brackets] show the **average** number of children per year group

### 2203 [441] children live in this PA (NHS)

- 1360 [272] go to schools in this PA
- 584 [117] go to schools in other Kirklees PAs
- 39 [8] go to schools in non-mainstream provisions
- 38 [8] go to schools in other LAs
- 182 [36] are unknown

### 1741 [348] children go to school in this PA (Census)

- 1360 [272] Live in this PA
- 372 [74] Live in other PAs
- 9 [2] Live outside Kirklees

Average number of places used per year group

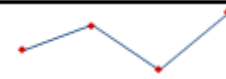
348

Number of Year 7 places available

390

Trend in number of children living in this PA per year group

**Broadly static with fluctuations**



Place planning strategy (assuming current patterns of migration, housing occupancy, parental preference etc)

- Based on population data the projected need for places is below the capacity of available places
- On balance, significantly more children travel OUT to schools in other PAs than travel in to schools in this PA
- In light of the potential impact of future housing development, which could lead to a requirement for additional places in the future, this planning area will be kept under review.

## Planning Area 32. Huddersfield South West

Table C: Where do children living in the Huddersfield South West planning

Years 7-11 (Jan 2023)

School Attended	Berry Brow I & N School / Newsome Junior School	Hillside Primary School	Mount Pleasant Primary School	Netherton I & N School / South Crosland CE (VA) Junior School	Oak CE (VC) Primary School (Junior)/Beaumont Primary Academy	Grand Total
All Saints Catholic College	6	10	4		17	37
Colne Valley High School		1	1	1	40	43
Heckmondwike Grammar School	3	1	1		4	9
Holmfirth High School	4	2		8	7	21
Honley High School	63	51	20	156	73	363
King James's School	3	1	1		3	8
Kirkburton Middle School		1				1
Moor End Academy	6	11	236		690	943
Netherhall Learning Campus High School		4	1		4	9
Newsome Academy	101	187	43	16	70	417
North Huddersfield Trust School	3	3			2	8
Royds Hall, A Share Academy	3	6	7		46	62
Salendine Nook High School Academy	4	1	3		10	18
Shelley College, A Share Academy					1	1
Upper Batley High School		1				1
Westborough High School					3	3
<b>Grand Total</b>	<b>196</b>	<b>280</b>	<b>317</b>	<b>181</b>	<b>970</b>	<b>1944</b>

## Planning Area 32. Huddersfield South West

Table D: Where do children attending school in Huddersfield South West live?

Years 7-11 (Jan 2023)

School Attended

PAA of Residence	School Attended		
	Moor End Academy	Newsome Academy	Grand Total
All Hallows' CE (VA) Primary School / Hill View Academy KS2		9	9
Ashbrow School		1	1
Berry Brow I & N School / Newsome Junior School	6	101	107
Birkby I & N School / Birkby Junior School	16	36	52
Boothroyd Primary Academy	2	1	3
Carlinghow Academy		2	2
Christ Church CE Academy	6	3	9
Co-op Academy Smithies Moor		1	1
Crow Lane Primary and Foundation Stage School	2	3	5
Dalton Junior Infant and Nursery School		8	8
Diamond Wood Community Academy / Ravensthorpe CE (VC) Junior School		1	1
Emley First School		1	1
Fixby J & I School		1	1
Flockton CE (VC) First School	1		1
Golcar J I & N School		1	1
Heaton Avenue, A SHARE Primary Academy	1	1	2
Heckmondwike Primary School	1		1
High Bank J I & N School	1		1
Highburton CE (VC) First School		2	2
Hightown J I & N School	2		2
Hill View Academy	2	17	19
Hillside Primary School	11	187	198
Holmfirth J I & N School		2	2
Honley CE(VC) Junior, Infant & Nursery School		2	2
Lepton CofE Primary Academy		1	1
Lindley Church of England Infant School / Lindley Junior School		3	3
Linthwaite Clough J I & Early Years Unit	4	3	7
Lowerhouses CE (VC) Junior Infant and Early Years School	2	86	88
Luck Lane, A SHARE Primary Academy	5	2	7
Lydgate J & I School		1	1
Manorfield I & N School / Staincliffe CE (VC) Junior School	1	1	2
Marsden I & N School / Marsden Junior School	2		2
Meltham Moor Primary School	2	2	4
Moldgreen Community Primary School		14	14
Moorlands Primary School		4	4
Mount Pleasant Primary School	236	43	279
Netherhall St James CE(VC) I & N School / Netherhall Learning Campus Junior School	7	13	20
Netherthong Primary School		3	3
Netherton I & N School / South Crosland CE (VA) Junior School		16	16
Nields J I & N School	2	1	3
Oak CE (VC) Primary School (Junior)/Beaumont Primary Academy	690	70	760
Paddock J I & N School	4	6	10
Pentland I & N School / Headfield CE (VC) Junior School	1		1
Reinwood I & N School / Reinwood Community Junior School	4	3	7
Scholes J & I School		1	1
Scholes Village Primary School		2	2
Shaw Cross I & N School / Bywell CE (VC) Junior School		1	1
Shelley First School		1	1
Shepley First School		1	1
Skelmanthorpe Academy School		1	1
Slaithwaite CE (VC) J & I School	2		2
Spring Grove J I & N School	9	17	26
St Thomas CE (VC) Primary School	4	6	10
Thornhill Lees CE (VC) I & N School / Headfield CE (VC) Junior School	2	2	4
Upperthong J & I School		2	2
Wilberlee J & I School		1	1
Woodside Green, A SHARE Primary Academy	10	7	17
<b>Grand Total</b>	<b>1038</b>	<b>694</b>	<b>1732</b>

Tables E(i) to E(iii) below show how Year 7 places were allocated in this planning area at each of the last three National Offer Days, compared to the number of Year 7 places available at each school and the number of applicants resident in each school's Priority Admission Area (PAA). Blanks in the tables indicate a school does not have a PAA.

**Table E(i)**

Newsome Academy offered an additional 10 bulge places over its new PAN of 180.

2023/24	No of Places	Total No of applicants living in PAA	Place allocated				Place allocated		
			Resident in Priority Admission Area allocated	Resident in Planning Area allocated	Resident outside Planning Area allocated	TOTAL No of places allocated	Resident in Priority Admission Area allocated	Resident in Planning Area allocated	Resident outside Planning Area allocated
<b>Huddersfield South West</b>									
Moor End Academy	210	272	198	4	8	210	94.3%	1.9%	3.8%
Newsome Academy	190	181	96	24	67	187	51.3%	12.8%	35.8%
	<b>400</b>	<b>453</b>	<b>277</b>	<b>17</b>	<b>60</b>	<b>354</b>	<b>78.2%</b>	<b>4.8%</b>	<b>16.9%</b>

**Table E(ii)**

Moor End Academy offered an additional 10 places over PAN before its PAN permanently became 210 from 2023/24.

2022/23	No of Places	Total No of applicants living in PAA	Place allocated				Place allocated		
			Resident in Priority Admission Area allocated	Resident in Planning Area allocated	Resident outside Planning Area allocated	TOTAL No of places allocated	Resident in Priority Admission Area allocated	Resident in Planning Area allocated	Resident outside Planning Area allocated
<b>Huddersfield South West</b>									
Moor End Academy	210	266	198	3	9	210	94.3%	1.4%	4.3%
Newsome Academy	183	159	79	14	51	144	54.9%	9.7%	35.4%
	<b>393</b>	<b>425</b>	<b>277</b>	<b>17</b>	<b>60</b>	<b>354</b>	<b>78.2%</b>	<b>4.8%</b>	<b>16.9%</b>

**Table E(iii)**

Moor End Academy offered an additional 10 places over PAN and Newsome Academy (at the time called Newsome High School) offered an additional 20 bulge places over its PAN of 183.

2021/22	No of Places	Total No of applicants living in PAA	Place allocated				Place allocated		
			Resident in Priority Admission Area allocated	Resident in Planning Area allocated	Resident outside Planning Area allocated	TOTAL No of places allocated	Resident in Priority Admission Area allocated	Resident in Planning Area allocated	Resident outside Planning Area allocated
<b>Huddersfield South West</b>									
Moor End Academy	210	241	174	2	34	210	82.9%	1.0%	16.2%
Newsome High School	203	170	87	14	65	166	52.4%	8.4%	39.2%
	<b>413</b>	<b>411</b>							