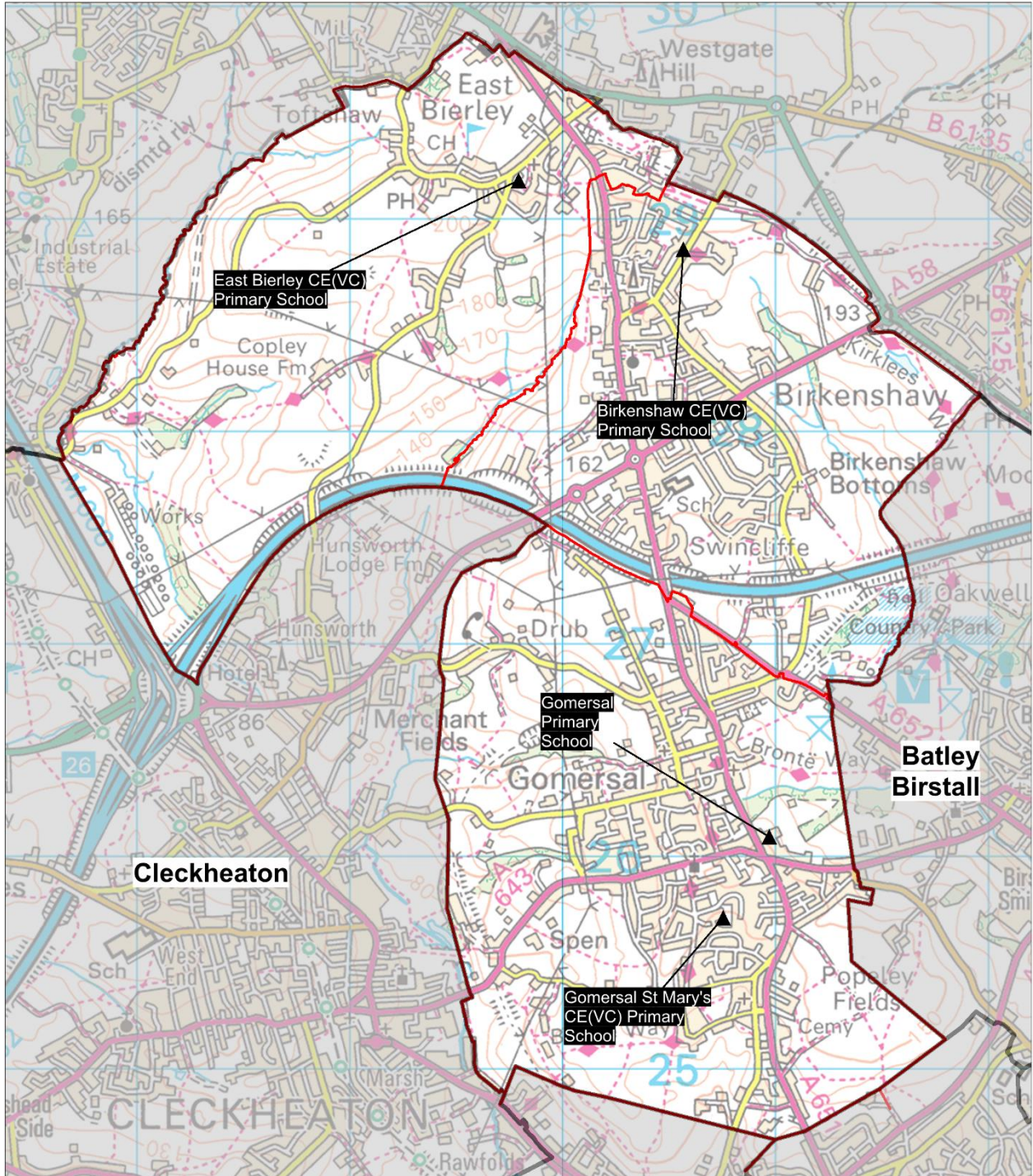


## Planning Area 4: Birkenshaw & Gomersal



Contains Ordnance Survey data  
© Crown Copyright and database right 2023


- ❖ Birkenshaw CE(VC) Primary School
- ❖ East Bierley CE(VC) Primary School
- ❖ Gomersal Primary School
- ❖ Gomersal St Mary's CE(VC) Primary School

**Overview:** Overview: The chart on page 79 (and Table B on page 80) shows the demand for Reception places from children resident in this planning area is expected to remain broadly static, with fluctuations.

In 2022/23 there were unfilled places at three of the four schools.

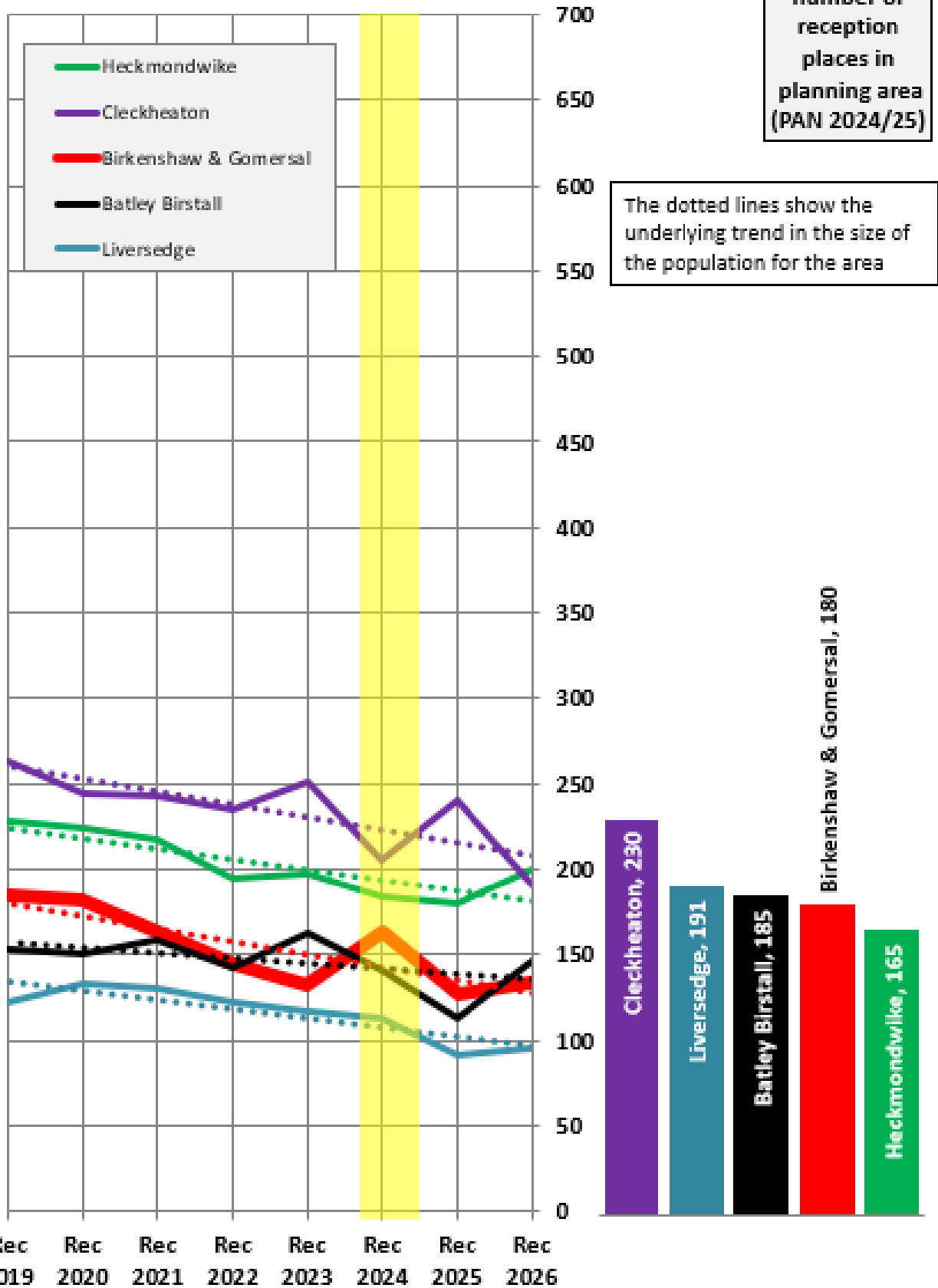
In 2023/24 there were unfilled places at national offer day at two of the four schools. The pattern of pupil distribution illustrates that the majority (77%) of children living in this planning area attend schools in the area, whilst others are securing places in neighbouring planning areas, particularly Cleckheaton and Batley Birstall. There is a small number (11%) of pupils attending schools here from neighbouring planning areas. Whilst there were sufficient places available to meet basic need this planning area borders the neighbouring authority of Bradford and there is a trend of inward migration.

For 2024, 2025 and 2026 population data indicate a broadly static trend overall in the number of children living in this planning area, albeit with some fluctuations. There is a housing development site with planning permission for 127 dwellings where building has not yet commenced. There is no need for additional places.

<b>Place planning summary for Planning Area 4. Birkenshaw &amp; Gomersal</b>	
Place planning data for three cohorts of children: Reception, Y1 and Y2 From NHS Oct 2022 and School Census Jan 2023 Note numbers in [square brackets] show the <b>average</b> number of children per year group	
<b>529 [176] children live in this PA (NHS)</b> <ul style="list-style-type: none"> <li>407 [136] go to schools in this PA</li> <li>59 [20] go to schools in other Kirklees PAs</li> <li>2 [1] go to schools in non-mainstream provisions</li> <li>23 [8] go to schools in other LAs</li> <li>38 [13] are unknown</li> </ul>	<b>496 [165] children go to school in this PA (Census)</b> <ul style="list-style-type: none"> <li>407 [136] Live in this PA</li> <li>53 [18] Live in other PAs</li> <li>36 [12] Live outside Kirklees</li> </ul>
Average number of places used per year group Number of reception places available Trend in number of children living in this PA per year group	165 180  <b>Broadly static with fluctuations</b>
Place planning strategy (assuming current patterns of migration, housing occupancy, parental preference etc) <ul style="list-style-type: none"> <li>Based on population data the projected need for places is below the capacity of available places</li> <li>On balance, slightly more children travel OUT to schools in neighbouring PAs than travel in to schools in this PA</li> <li><b>No need for additional places</b></li> </ul>	

**Planning Area 4. Birkenshaw & Gomersal**  
**Chart showing pupil population trends and available school places**

population trends in neighbouring planning areas  
 Reception 2019 to Reception 2026 (NHS)



The chart above shows the size of each year group in the child population in the planning area and the neighbouring planning areas for Reception cohorts Sep 2019 to Sep 2026. The dotted line shows the underlying trend in the size of the pupil population for each area.

The bar chart shows the number of Reception class places available in each planning area, based on the Published Admission Numbers (PANs) of the schools in the area. The yellow shading highlights the data for Reception classes in September 2024.

Planning Area 4. Birkenshaw & Gomersal																		
Table A. Number on roll - pupil census January 2023																		
School Name	PAN 2024/25	Admission Limit / PAN	Nursery						Primary								Total Pupils	
	KS1	KS2	< 2 PT	2+ PT	3+ PT	4+ PT	FT	4+ PT	4+ FT	5+	6+	7+	8+	9+	10+			
Birkenshaw CE (VC) Primary School	60	60	0	4	11	0	17	0	60	59	61	61	60	59	61	453		
East Bierley CE(VC) Primary School	30	30	0	0	0	0	0	0	28	29	28	30	32	25	30	202		
Gomersal Primary School	60	60	0	0	0	0	0	0	50	58	60	58	61	61	61	409		
Gomersal St Mary's CE (VC) Primary School	30	30	0	3	10	0	2	0	17	16	30	25	23	23	31	180		
	180	180	0	7	21	0	19	0	155	162	179	174	176	168	183			

Planning Area 4 Birkenshaw & Gomersal															
Table B. Number of pupils in each year cohort resident in the planning area - school year 2022-23 - (NHS Oct2022)															
future reception year groups				Infant 2022/23			Junior 2022/23				Secondary 2022/23				
				Early years/KS1			Key Stage 2				Key Stage 3			KS4	
Reception Sep 2026	Reception Sep 2025	Reception Sep 2024	Reception Sep 2023	Reception 2022/23	Year 1	Year 2	Year 3	Year 4	Year 5	Year 6	Year 7	Year 8	Year 9	Year 10	Year 11
134	127	163	133	144	163	182	184	185	175	202	194	207	172	211	166

## Planning Area 4. Birkenshaw & Gomersal

Table C: Where do children living in the Birkenshaw & Gomersal planning area go to school?

Reception - Year 6 (Jan 2023)

School Attended	Birkenshaw CE(C) Primary School	East Bierley CE(VC) Primary School	Gomersal St Mary's CE(VC) Primary School / Gomersal Primary School	Grand Total
Batley Parish CE (VA) J I & N School	1			1
Battysford CE(VC) Primary School	1			1
Birkenshaw C.E. (C) Primary School	358	12	17	387
Birstall Primary Academy	3		7	10
Co-op Academy Smithies Moor			4	4
East Bierley CE (VC) Primary School	26	88	2	116
Fieldhead Primary Academy	2			2
Fixby J & I School			3	3
Gomersal Primary School	36	3	299	338
Gomersal St Mary's CE (C) Primary School	4		115	119
Hartshead J & I School			1	1
Headlands CE (VC) J I & N School	1		3	4
Healey Junior Infant and Nursery School			1	1
Heaton Avenue, A SHARE Primary Academy	3	1	3	7
Hightown J I & N School			1	1
Holy Spirit Catholic Primary Academy	1		5	6
Hopton Primary School			2	2
Howard Park Community School	1		13	14
Littleton J I & N School	2		5	7
Mill Lane Primary School			2	2
Millbridge, A SHARE Primary Academy			1	1
Norristhorpe J & I School	4		3	7
Roberttown CE (VC) J & I School			3	3
Scholes Village Primary School	1		1	2
St Mary's Catholic Primary Academy	3		1	4
St Patrick's Catholic Primary Academy	14		55	69
St Peter's CE (VA) Junior, Infant and Early Years School	10	3	4	17
St Thomas CE (VC) Primary School	1			1
Whitechapel Church of England Primary School	8		8	16
Windmill CE(VC) Primary School	1		2	3
<b>Grand Total</b>	<b>481</b>	<b>107</b>	<b>561</b>	<b>1149</b>

## Planning Area 4. Birkenshaw & Gomersal

**Table D: Where do children attending school in Birkenshaw & Gomersal live?**

Reception - Year 6 (Jan 2023)

School Attended

PAA of Residence	Birkenshaw C.E. (C) Primary School	East Bierley CE (VC) Primary School	Gomersal Primary School	Gomersal St Mary's CE (C) Primary School	Grand Total
Birkenshaw CE(C) Primary School	358	26	36	4	<b>424</b>
Birstall Primary Academy		2	15	6	<b>23</b>
Carlinghow Academy	1		4	2	<b>7</b>
Co-op Academy Smithies Moor			9	4	<b>13</b>
Crowlees CE (VC) J & I School			1		<b>1</b>
Denby Dale First and Nursery School			1		<b>1</b>
East Bierley CE(VC) Primary School	12	88	3		<b>103</b>
Fieldhead Primary Academy		2		1	<b>3</b>
Gomersal St Mary's CE(VC) Primary School / Gomersal Primary School	17	2	299	115	<b>433</b>
Hartshead J & I School	2				<b>2</b>
Headlands CE (VC) J I & N School			1	2	<b>3</b>
Healey J I & N School				1	<b>1</b>
Heaton Avenue, A SHARE Primary Academy			5	4	<b>9</b>
Heckmondwike Primary School			1	1	<b>2</b>
Hightown J I & N School			4	3	<b>7</b>
Howard Park Community School	2		7	4	<b>13</b>
Luck Lane, A SHARE Primary Academy				1	<b>1</b>
Manorfield I & N School / Staincliffe CE (VC) Junior School				1	<b>1</b>
Millbridge, A SHARE Primary Academy	1		2	11	<b>14</b>
Norristhorpe J & I School				1	<b>1</b>
Scholes Village Primary School		2	1	1	<b>4</b>
St John's CE(C) Primary School / Westmoor Primary School KS2			1	1	<b>2</b>
St Thomas CE (VC) Primary School			1		<b>1</b>
Whitechapel Church of England Primary School	7	4	10		<b>21</b>
Windmill Church of England Primary School	1		3	1	<b>5</b>
<b>Grand Total</b>	<b>401</b>	<b>126</b>	<b>404</b>	<b>164</b>	<b>1095</b>

Tables E(i) to E(iii) below show how Reception places were allocated in this planning area at each of the last three National Offer Days, compared to the number of Reception places available at each school and the number of applicants resident in each school's Priority Admission Area (PAA). Blanks in the tables indicate a school does not have a PAA.

**Table E(i)**

2023/24	PAN	No of applicants living in PAA	No of places allocated	Vacancies	Waiting list
<b>Birkenshaw &amp; Gomersal</b>					
Birkenshaw C.E. (C) Primary School	60	53	60	0	1
East Bierley CE (VC) Primary School	30	19	30	0	0
Gomersal Primary School	60	55	49	11	0
Gomersal St Mary's CE (C) Primary School	30		14	16	0
	<b>180</b>	<b>127</b>	<b>153</b>	<b>27</b>	<b>1</b>

**Table E(ii)**

2022/23	PAN	No of applicants living in PAA	No of places allocated	Vacancies	Waiting list
<b>Birkenshaw &amp; Gomersal</b>					
Birkenshaw C.E. (C) Primary School	60	60	60	0	3
East Bierley CE (VC) Primary School	30	19	26	4	0
Gomersal Primary School	60	65	52	8	0
Gomersal St Mary's CE (C) Primary School	30		18	12	0
	<b>180</b>	<b>144</b>	<b>156</b>	<b>24</b>	<b>3</b>

**Table E(iii)**

2021/22	PAN	No of applicants living in PAA	No of places allocated	Vacancies	Waiting list
<b>Birkenshaw &amp; Gomersal</b>					
Birkenshaw C.E. (C) Primary School	60	75	60	0	15
East Bierley CE (VC) Primary School	30	19	30	0	8
Gomersal Primary School	60	71	60	0	3
Gomersal St Mary's CE (C) Primary School	30		14	16	0
	<b>180</b>	<b>165</b>	<b>164</b>	<b>16</b>	<b>26</b>