

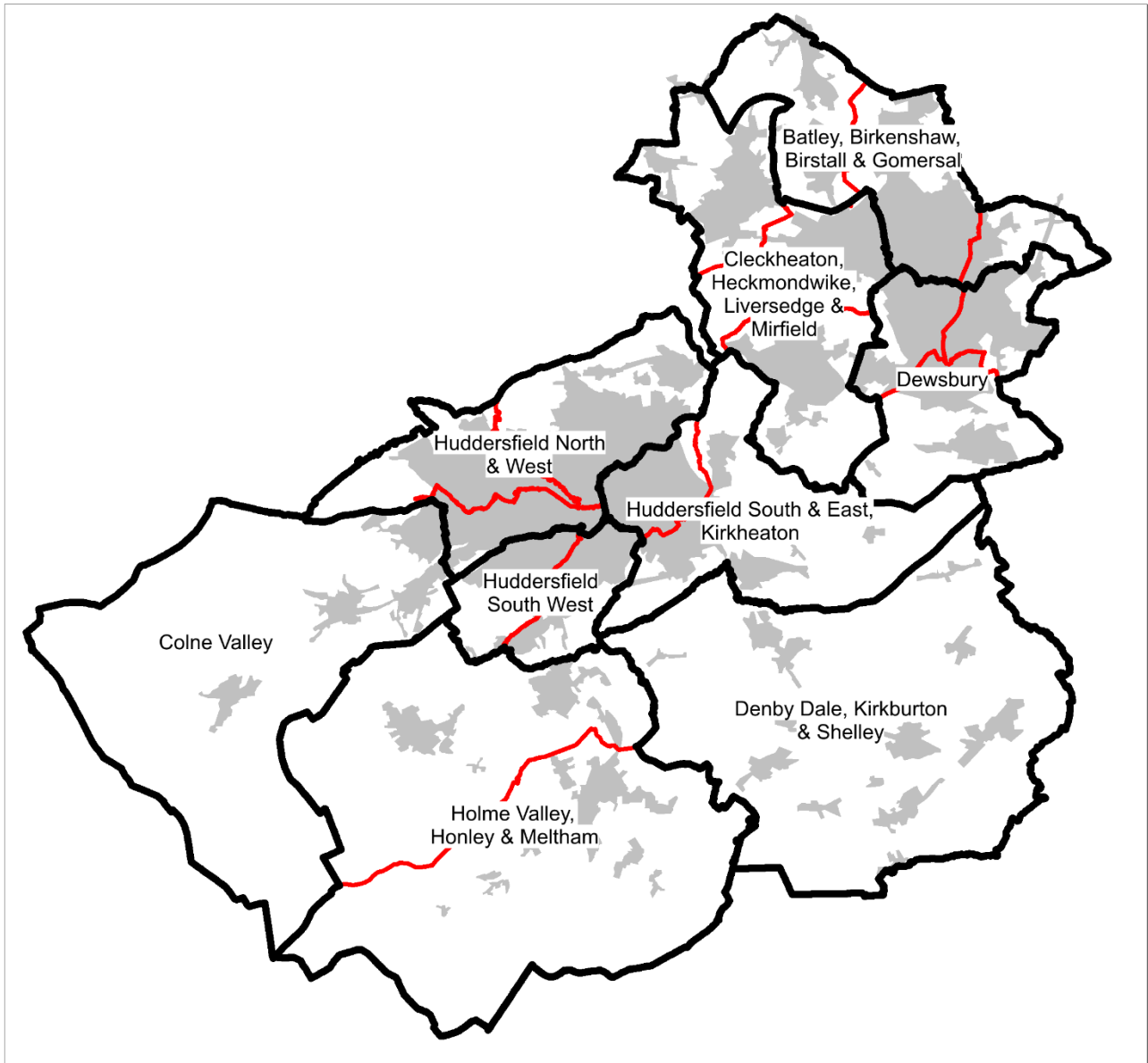
Appendix C: Secondary Planning Areas<sup>1</sup>

**Kirklees School Organisation & Planning Team**

Planning Area number	Planning Area	Secondary School Provision	Page
24	Batley, Birkenshaw, Birstall & Gomersal	Batley Girls' High School – Visual Arts college Batley Grammar School BBG Academy Upper Batley High School	225
25	Cleckheaton, Heckmondwike, Liversedge & Mirfield	Castle Hall Academy Heckmondwike Grammar School Spen Valley High School The Mirfield Free Grammar Whitcliffe Mount, A SHARE Academy	231
26	Colne Valley	Colne Valley High School	237
27	Denby Dale, Kirkburton & Shelley	Kirkburton Middle School Scissett Middle School Shelley College, A SHARE Academy	243
28	Dewsbury	Manor Croft Academy St John Fisher Catholic Voluntary Academy Thornhill Community Academy, A SHARE Academy Westborough High School	251
29	Holme Valley, Honley & Meltham	Holmfirth High School Honley High School	257
30	Huddersfield North & West	All Saints Catholic College, Specialist in Humanities North Huddersfield Trust School Royds Hall, A SHARE Academy Salendine Nook High School Academy	262
31	Huddersfield South & East and Kirkheaton	King James's School Netherhall Learning Campus High School	268
32	Huddersfield South West	Moor End Academy Newsome Academy	274

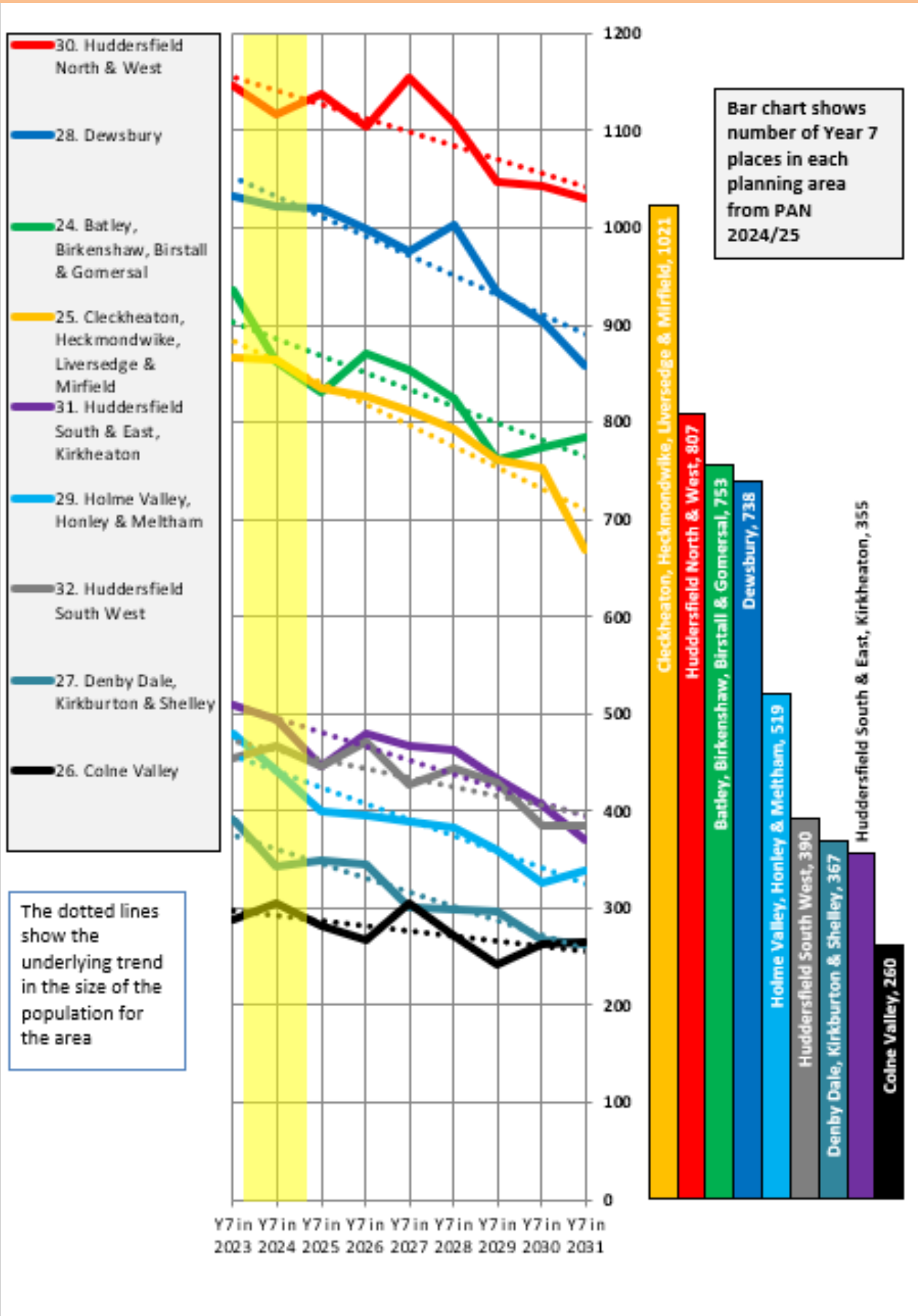
<sup>1</sup> School names in this document are correct at time of publication but may be subject to change as a result of structural changes e.g. Academy conversions or schools coming together through reorganisation proposals.

## Map showing Secondary Planning Areas



All Secondary Planning Areas

Chart showing pupil population trends and available school places (NHS Oct 2022 and PANS 2024/25)



Secondary Planning Area 24-32: All secondary Provision

Table A. Number on roll – pupil census January 2023

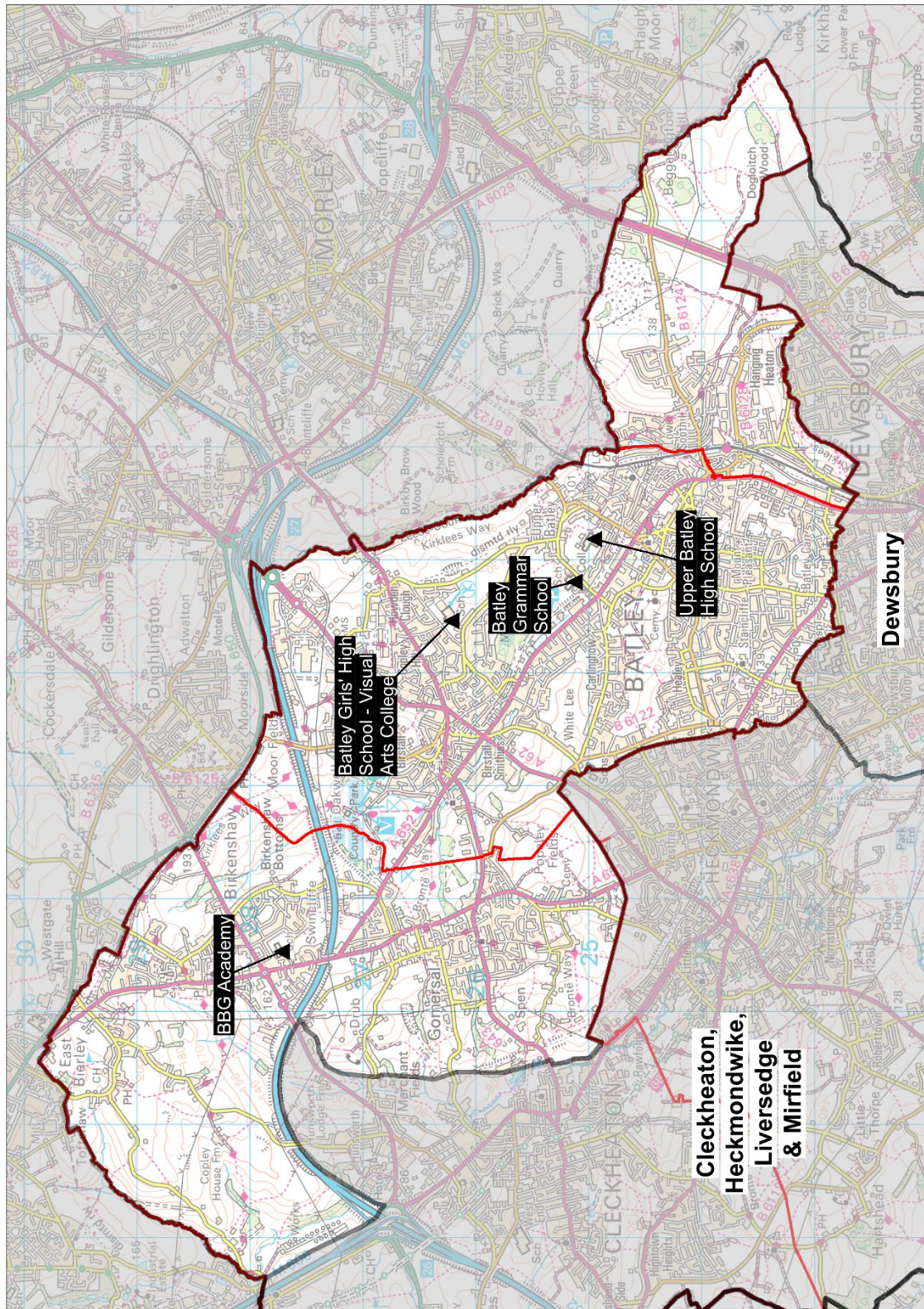
Planning Area	School Code	School Name	Y7 PAN 2024/25	Admissions Over PAN in 23/24	10+	11-16					Post 16				Pupils 11-16
						11+	12+	13+	14+	15+	16+	17+	18+	19+	
24. Batley, Birkenshaw, Birstall & Gomersal	4048	Batley Girls High School ? Visual Arts College	233	10	0	241	233	231	234	216	101	102	14	3	1,155
	6012	Batley Grammar School	160		31	160	160	159	164	156	0	0	0	0	799
	4045	BBG Academy	210		0	212	210	200	200	199	1	0	0	0	1,021
	4005	Upper Batley High School	150	10	0	160	149	149	162	150	0	0	0	0	770
			753	20	31	773	752	739	760	721	102	102	14	3	3,745
25. Cleckheaton, Heckmondwike, Liversedge & Mirfield	4008	Castle Hall Academy	180	10	0	171	138	147	146	133	0	0	0	0	735
	5401	Heckmondwike Grammar School	180	30	0	210	209	210	207	211	221	251	1	0	1,047
	4061	Spenn Valley High School	190		0	206	189	188	188	182	0	0	0	0	953
	4040	The Mirfield Free Grammar And Sixth Form	221		0	247	250	224	222	215	191	143	16	0	1,158
	4500	Whitcliffe Mount School	250		0	250	250	251	246	240	0	0	0	0	1,237
			1,021	40	0	1,084	1,036	1,020	1,009	981	412	394	17	0	5,130
26. Colne Valley	4004	Colne Valley High School	287		0	294	285	299	284	263	1	0	0	0	1,425
			287	0	0	294	285	299	284	263	1	0	0	0	1,425
27. Denby Dale, Kirkburton & Shelley	4054	Kirkburton Middle School * first year admission Y6	167	4	170	165	161	0	0	0	0	0	0	0	326
	4041	Scissett Middle School * first year admission Y6	200		199	223	194	0	0	0	0	0	0	0	417
	4049	Shelley College *** first year admission Y9	360		0	0	0	360	359	359	119	114	3	0	1,078
				4	369	388	355	360	359	359	119	114	3	0	1,821
28. Dewsbury	4002	Manor Croft Academy	180	30	0	212	210	209	208	174	0	0	0	0	1,013
	4800	St John Fisher Catholic High School	198		0	195	190	189	195	193	42	46	3	0	962
	4007	Thornhill Community Academy, A Share Acade	180	30	0	189	180	178	183	156	0	0	0	0	886
	4057	Westborough High School	180	20	0	192	179	183	197	179	0	0	0	0	930
			738	80	0	788	759	759	783	702	42	46	3	0	3,791
29. Holme Valley, Honley & Meltham	4046	Holmfirth High School	264	18	0	261	263	263	266	260	1	0	0	0	1,313
	4038	Honley High School	255	18	0	257	254	253	254	252	1	0	0	0	1,270
			519	36	0	518	517	516	520	512	2	0	0	0	2,583
30. Huddersfield North & West	4613	All Saints Catholic College	180		0	182	178	181	178	179	0	0	0	0	898
	4801	North Huddersfield Trust School	180	30	0	204	209	199	142	166	0	0	0	0	920
	4006	Royds Hall, A Share Academy : Luck Lane, Etc	172		81	174	174	176	160	171	1	0	0	0	855
	4013	Salendine Nook High School Academy	275	10	0	280	285	285	281	272	0	0	0	0	1,403
			807	40	0	840	846	841	761	788	1	0	0	0	4,076
31. Huddersfield South & East, Kirkheaton	4000	King James's School	210	5	0	210	208	208	212	192	0	0	0	0	1,030
	4009	Netherhall Learning Campus - High School	145	20	0	156	144	158	143	125	51	32	1	0	726
			355	25	0	366	352	366	355	317	51	32	1	0	1,756
32. Huddersfield South West	4021	Moor End Academy	210	5	0	212	210	210	210	199	0	0	0	0	1,041
	4010	Newsome Academy	180	20	0	149	149	145	151	104	2	0	0	0	698
			390	25	0	361	359	355	361	303	2	0	0	0	1,739
		<b>Total</b>	<b>4,870</b>	<b>270</b>		<b>5,412</b>	<b>5,261</b>	<b>5,255</b>	<b>5,192</b>	<b>4,946</b>					<b>26,066</b>

Secondary Planning Areas 24-32: All secondary provision															
Table B. Number of children and young people living in each planning area (NHS Oct 2022)															
Age 31.8.2022 >>	Future year 7 populations										Secondary pupils 2022-23				
	2	3	4	5	6	7	8	9	10	11	12	13	14	15	
	Y7 2031	Y7 2030	Y7 2029	Y7 2028	Y7 2027	Y7 2026	Y7 2025	Y7 2024	Y7 2023	Y7	Y8	Y9	Y10	Y11	
Year 7 in															
24. Batley, Birkenshaw, Birstall & Gomersal	785	775	762	825	854	870	830	863	935	940	886	883	935	865	
25. Cleckheaton, Heckmondwike, Liversedge & Mirfield	669	752	762	793	811	827	835	864	867	909	906	895	882	836	
26. Colne Valley	265	262	242	271	306	268	282	305	289	306	287	314	297	298	
27. Denby Dale, Kirkburton & Shelley	264	268	296	299	300	344	349	343	392	383	363	375	399	373	
28. Dewsbury	859	905	934	1,003	976	999	1,020	1,023	1,033	1,070	1,026	986	1,059	970	
29. Holme Valley, Honley & Meltham	339	327	360	383	390	395	400	442	479	442	439	454	491	468	
30. Huddersfield North & West	1,030	1,043	1,048	1,108	1,154	1,104	1,138	1,116	1,146	1,174	1,168	1,150	1,025	1,077	
31. Huddersfield South & East, Kirkheaton	370	407	434	462	467	479	447	494	508	489	525	492	493	464	
32. Huddersfield South West	385	386	429	443	426	472	445	466	454	479	431	440	453	400	
Total	4,966	5,125	5,267	5,587	5,684	5,758	5,746	5,916	6,103	6,192	6,031	5,989	6,034	5,751	

Secondary Planning Areas 24, 25 & 28: North Kirklees															
Age 31.8.2022 >>	Future year 7 populations										Secondary pupils 2022-23				
	2	3	4	5	6	7	8	9	10	11	12	13	14	15	
	Y7 2031	Y7 2030	Y7 2029	Y7 2028	Y7 2027	Y7 2026	Y7 2025	Y7 2024	Y7 2023	Y7	Y8	Y9	Y10	Y11	
PA_Label	2	3	4	5	6	7	8	9	10	11	12	13	14	15	
24. Batley, Birkenshaw, Birstall & Gomersal	785	775	762	825	854	870	830	863	935	940	886	883	935	865	
25. Cleckheaton, Heckmondwike, Liversedge & Mirfield	669	752	762	793	811	827	835	864	867	909	906	895	882	836	
28. Dewsbury	859	905	934	1,003	976	999	1,020	1,023	1,033	1,070	1,026	986	1,059	970	
Total	2,313	2,432	2,458	2,621	2,641	2,696	2,685	2,750	2,835	2,919	2,818	2,764	2,876	2,671	

Secondary Planning Areas 26, 27, 29, 30, 31 & 32: South Kirklees															
Age 31.8.2022 >>	Future year 7 populations										Secondary pupils 2022-23				
	2	3	4	5	6	7	8	9	10	11	12	13	14	15	
	Y7 2031	Y7 2030	Y7 2029	Y7 2028	Y7 2027	Y7 2026	Y7 2025	Y7 2024	Y7 2023	Y7	Y8	Y9	Y10	Y11	
PA_Label	2	3	4	5	6	7	8	9	10	11	12	13	14	15	
26. Colne Valley	265	262	242	271	306	268	282	305	289	306	287	314	297	298	
27. Denby Dale, Kirkburton & Shelley	264	268	296	299	300	344	349	343	392	383	363	375	399	373	
29. Holme Valley, Honley & Meltham	339	327	360	383	390	395	400	442	479	442	439	454	491	468	
30. Huddersfield North & West	1,030	1,043	1,048	1,108	1,154	1,104	1,138	1,116	1,146	1,174	1,168	1,150	1,025	1,077	
31. Huddersfield South & East, Kirkheaton	370	407	434	462	467	479	447	494	508	489	525	492	493	464	
32. Huddersfield South West	385	386	429	443	426	472	445	466	454	479	431	440	453	400	
Total	2,653	2,693	2,809	2,966	3,043	3,062	3,061	3,166	3,268	3,273	3,213	3,225	3,158	3,080	

# Planning Area 24: Batley, Birkenshaw, Birstall & Gomersal



Contains Ordnance Survey data  
© Crown Copyright and database right 2023

- ❖ Batley Girls' High School – Visual Arts College
- ❖ Batley Grammar School
- ❖ BBG Academy
- ❖ Upper Batley High School

**Overview:** Table B on page 224 and the chart on page 222 illustrate that the future year 7 cohort size of young people resident in this planning area will continue to decline with some fluctuations. In the wider area of North Kirklees, there has been a period of high demand where a significant number of planned bulge places were required. Beyond 2024, it is likely that far fewer bulge places, if any, will be needed.

There are two schools in this planning area that offer single gender provision which are Batley Girls' High School and Upper Batley High School. There is co-educational provision at Batley Grammar School and BBG Academy. This planning area is adjacent to two neighbouring local authorities and there has been a well-established trend of outward migration of secondary aged pupils to Leeds with some inward flow from Bradford. Part of this planning area is in the priority admission area of Whitcliffe Mount, A SHARE Academy which accounts for some of the movement of pupils to Cleckheaton, Heckmondwike, Liversedge & Mirfield (planning area 25).

**In 2022/23** At national offer day, Batley Girls' High School, Batley Grammar School, BBG Academy and Upper Batley High School were all full. Upper Batley High School and Batley Girls' High each offered an additional 10 bulge places over PAN, taking the number of places offered at Batley Girls' High School to 243 and at Upper Batley High School to 160.

**In 2023/24** At national offer day, Batley Girls' High School, Batley Grammar School, BBG Academy and Upper Batley High School were all full. Again, Batley Girls' High School and Upper Batley High School each offered an additional 10 bulge places, taking the number of places offered at Batley Girls' High School to 243 and at Upper Batley High School to 160. The pattern of pupil distribution illustrates that around 61% of children that live in this planning area attend schools in the area, around 18% are securing places in neighbouring planning areas, particularly Cleckheaton, Heckmondwike, Liversedge & Mirfield and Dewsbury, and around 14% attend schools in other local authorities. Around 24% of pupils attending schools here are from neighbouring planning areas and 3% from other LAs.

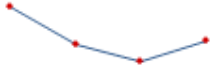
**For 2024, 2025 and 2026** NHS population data suggest a continuing decline. Population recovers slightly in 2026, but not above previous levels, and continues to decline thereafter.

Given the complex pattern of provision across the borough and the pupil distribution trends, a strategic approach has been taken across a wider geographical area. The North Kirklees planning areas of Cleckheaton, Heckmondwike, Liversedge, Mirfield and Dewsbury are being considered together in terms of growth in demand and solutions to address this.

In the period leading up to the 2022 population peak there was high demand for places in the wider area of North Kirklees. Through the goodwill and collaboration of the Kirklees school system, this was managed by the carefully planned introduction of bulge places rather than the introduction of a new school. These bulge classes are still working their way through the school system and this does continue to present some challenges to in-year pupil movement. However, the pressure on Year 7 places will begin to ease as the population declines.

There is one housing development in this planning area where building work on approximately 320 dwellings has commenced and is expected to be complete in around seven years. Looking longer term (+5 years), there is a strategic development site in the Kirklees Local Plan on the border of this planning area and the Dewsbury planning area. The demand for places

generated by this will need monitoring over a number of years, alongside the expected decline in population.

Place planning summary for Planning Area 24. Batley, Birkenshaw, Birstall & Gomersal	
Place planning data for five cohorts of children: Years 7,8,9,10,11 From NHS Oct 2022 and School Census Jan 2023 Note numbers in [square brackets] show the <b>average</b> number of children per year group	
<b>4509 [902] children live in this PA (NHS)</b> <ul style="list-style-type: none"> <li>2742 [548] go to schools in this PA</li> <li>791 [158] go to schools in other Kirklees PAs</li> <li>70 [14] go to schools in non-mainstream provisions</li> <li>610 [122] go to schools in other LAs</li> <li>296 [59] are unknown</li> </ul>	<b>3747 [749] children go to school in this PA (Census)</b> <ul style="list-style-type: none"> <li>2742 [548] Live in this PA</li> <li>898 [180] Live in other PAs</li> <li>107 [21] Live outside Kirklees</li> </ul>
Average number of places used per year group Number of Year 7 places available Trend in number of children living in this PA per year group	749 753  <p><b>Slight decline with fluctuations</b></p>
Place planning strategy (assuming current patterns of migration, housing occupancy, parental preference etc) <ul style="list-style-type: none"> <li>Based on population data the projected need for places is within the capacity of available places</li> <li>On balance, more children travel IN to schools in the PA from neighbouring PAs than travel out to schools in other PAs</li> <li>In the wider area of North Kirklees, there has been a period of high demand where a significant number of planned bulge places were required. In future, it is likely that far fewer bulge places, if any, will be needed.</li> </ul>	



**Planning Area 24. Batley, Birkenshaw, Birstall & Gomersal**

**Table C: Where do children living in the Batley, Birkenshaw, Birstall & Gomersal planning area go to school?**

Years 7-11 (Jan 2023)

School Attended	Birkenshaw CE(C) Primary School	Birstall Primary Academy	Carlinghow Academy	East Bierley CE(VC) Primary School	Field Lane J I & N School	Fieldhead Primary Academy	Gomersal St Mary's CE(VC) Primary School / Gomersal Primary School	Healey J I & N School	Lydgate J & I School	Manorfield I & N School / Staincliffe CE (VC) Junior School	Mill Lane Primary School	Park Road J I & N School	Purlwell I & N School / Hyrstmount Junior School	Warwick Road Primary School	Windmill Church of England Primary School	Grand Total
All Saints Catholic College			2		1											3
Batley Girls High School	1	4	70		48	10	1	72	48	201	9	40	100	65	16	685
Batley Grammar School	2	26	165	1	9	22	3	86	33	111	7	60	47	29	53	654
BBG Academy	290	67	13	78		109	307		2						18	884
Castle Hall Academy		1	3	1		1	2			6			4			18
Heckmondwike Grammar School	12	5	9	4	1	1	26	12	8	23	3	6	6	6	20	142
Manor Croft Academy			9		1			11	19	10	23	3	2	3		81
Moor End Academy										1						1
Netherhall Learning Campus High School										1						1
Newsome Academy			2						1	1						4
Royds Hall, A Share Academy							1	1								2
Spenn Valley High School	1	3	7			4	8	5		7	2				1	38
St John Fisher Catholic Voluntary Academy	4	16	70		1	16	13	51	17	60	10	4	4	10	12	288
The Mirfield Free Grammar		4	4	1		1		3		1			1			15
Thornhill Community Academy, A SHARE Academy		2	2			1		2	1		1	1				10
Upper Batley High School	1	4	45		40	7	2	62	29	133	6	44	98	47	1	519
Westborough High School		1	3			3		16	3	23		2	3	6		60
Whitcliffe Mount, A SHARE Academy	8	5	5	2		3	102	1		1					1	128
<b>Grand Total</b>	<b>319</b>	<b>138</b>	<b>409</b>	<b>87</b>	<b>101</b>	<b>178</b>	<b>465</b>	<b>322</b>	<b>161</b>	<b>579</b>	<b>61</b>	<b>160</b>	<b>265</b>	<b>166</b>	<b>122</b>	<b>3533</b>

## Planning Area 24. Batley, Birkenshaw, Birstall & Gomersal

**Table D: Where do children attending school in Batley, Birkenshaw, Birstall & Gomersal live?**

Years 7-11 (Jan 2023)

PAA of Residence	School Attended				
	Batley Girls High School	Batley Grammar School	BBG Academy	Upper Batley High School	Grand Total
Ashbrow School	1				1
Battleyford C E (VC) Primary School				1	1
Birkby I & N School / Birkby Junior School	1			1	2
Birkenshaw CE(C) Primary School	1	2	290	1	294
Birstall Primary Academy	4	26	67	4	101
Boothroyd Primary Academy	17	1		11	29
Carlinghow Academy	70	165	13	45	293
Carlton J & I School	49	8		50	107
Christ Church CE Academy	2			1	3
Co-op Academy Smithies Moor	83	19	5	32	139
Crossley Fields J & I School			2		2
Crowlees CE (VC) J & I School		1			1
Diamond Wood Community Academy / Ravensthorpe CE (VC) Junior School	11	4		11	26
Earlsheaton Infant School / Bywell CE (VC) Junior School	1			2	3
East Bierley CE(VC) Primary School		1	78		79
Eastborough J I & N School	8	2		9	19
Field Lane J I & N School	48	9		40	97
Fieldhead Primary Academy	10	22	109	7	148
Gomersal St Mary's CE(VC) Primary School / Gomersal Primary School	1	3	307	2	313
Hanging Heaton CE (VC) J & I School	1	4		2	7
Hartshead J & I School			1		1
Headlands CE (VC) J I & N School			3	1	4
Healey J I & N School	72	86		62	220
Heaton Avenue, A SHARE Primary Academy	1		3		4
Heckmondwike Primary School	112	21	4	20	157
High Bank J I & N School			4	1	5
Hightown J I & N School	3	2		2	7
Hillside Primary School				1	1
Hopton Primary School		1			1
Howard Park Community School	3	1	2	2	8
Littletown J I & N School			2		2
Lydgate J & I School	48	33	2	29	112
Manorfield I & N School / Staincliffe CE (VC) Junior School	201	111		133	445
Mill Lane Primary School	9	7		6	22
Millbridge, A SHARE Primary Academy	23	7	7	16	53
Moldgreen Community Primary School				1	1
Norristhorpe J & I School	11	2	2		15
Old Bank Academy			2	1	3
Orchard Primary Academy	1			1	2
Overthorpe C of E Academy		3			3
Park Road J I & N School	40	60		44	144
Pentland I & N School / Headfield CE (VC) Junior School	7	2		7	16
Purlwell I & N School / Hyrstmount Junior School	100	47		98	245
Roberttown CE (VC) J & I School	1		1		2
Savile Town CE(VC) I & N School / Headfield CE (VC) Junior School	6	1		2	9
Scholes Village Primary School			1		1
Shaw Cross I & N School / Bywell CE (VC) Junior School	9	2		3	14
Shelley First School			1		1
Spring Grove J I & N School	1				1
St John's CE(C) Primary School / Westmoor Primary School KS2	33	31		22	86
Thornhill J & I School	1	2		3	6
Thornhill Lees CE (VC) I & N School / Headfield CE (VC) Junior School	36	6		24	66
Warwick Road Primary School	65	29		47	141
Westmoor Primary School	31	15	2	20	68
Whitechapel Church of England Primary School	1	3	16	1	21
Windmill Church of England Primary School	16	53	18	1	88
<b>Grand Total</b>	<b>1139</b>	<b>792</b>	<b>942</b>	<b>767</b>	<b>3640</b>

Tables E(i) to E(iii) below show how Year 7 places were allocated in this planning area at each of the last three National Offer Days, compared to the number of Year 7 places available at each school and the number of applicants resident in each school's Priority Admission Area (PAA). Blanks in the tables indicate a school does not have a PAA.

**Table E(i)**

Batley Girls' High School and Upper Batley High School each offered an additional 10 bulge places over PAN.

2023/24	No of Places	Total No of applicants living in PAA	Place allocated				Place allocated		
			Resident in Priority Admission Area allocated	Resident in Planning Area allocated	Resident outside Planning Area allocated	TOTAL No of places allocated	Resident in Priority Admission Area allocated	Resident in Planning Area allocated	Resident outside Planning Area allocated
<b>Batley, Birkenshaw, Birstall &amp; Gomersal</b>									
BBG Academy	210			37	173	210		17.6%	82.4%
Batley Girls High School	243	636	147		96	243	60.5%		39.5%
Upper Batley High School	160		116		44	160	72.5%		27.5%
Batley Grammar School	160			123	37	160		76.9%	23.1%
	<b>773</b>	<b>636</b>	<b>263</b>	<b>160</b>	<b>350</b>	<b>773</b>	<b>34.0%</b>	<b>20.7%</b>	<b>45.3%</b>

**Table E(ii)**

Batley Girls' High School and Upper Batley High School each offered an additional 10 bulge places over PAN.

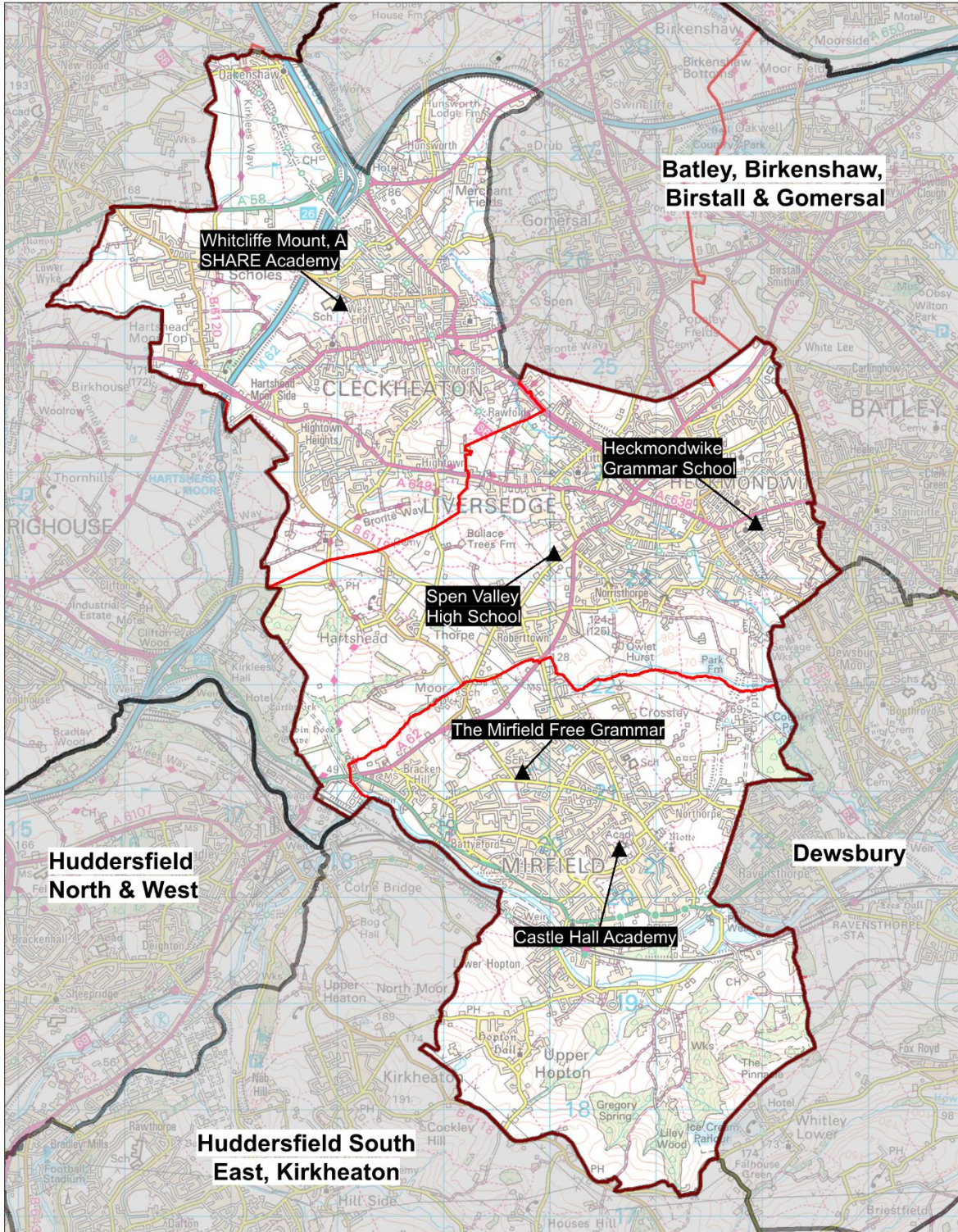
2022/23	No of Places	Total No of applicants living in PAA	Place allocated				Place allocated		
			Resident in Priority Admission Area allocated	Resident in Planning Area allocated	Resident outside Planning Area allocated	TOTAL No of places allocated	Resident in Priority Admission Area allocated	Resident in Planning Area allocated	Resident outside Planning Area allocated
<b>Batley, Birkenshaw, Birstall &amp; Gomersal</b>									
BBG Academy	210			39	171	210		18.6%	81.4%
Batley Girls High School	243	637	139		104	243	57.2%		42.8%
Upper Batley High School	160		99		61	160	61.9%		38.1%
Batley Grammar School	160			122	38	160		76.3%	23.8%
	<b>773</b>	<b>637</b>	<b>238</b>	<b>161</b>	<b>374</b>	<b>773</b>	<b>30.8%</b>	<b>20.8%</b>	<b>48.4%</b>

**Table E(iii)**

Upper Batley High School offered an additional 10 bulge places over PAN.

2021/22	No of Places	Total No of applicants living in PAA	Place allocated				Place allocated		
			Resident in Priority Admission Area allocated	Resident in Planning Area allocated	Resident outside Planning Area allocated	TOTAL No of places allocated	Resident in Priority Admission Area allocated	Resident in Planning Area allocated	Resident outside Planning Area allocated
<b>Batley, Birkenshaw, Birstall &amp; Gomersal</b>									
BBG Academy	210			33	177	210		15.7%	84.3%
Batley Girls' High School	233	324	112		122	234	47.9%		52.1%
Upper Batley High School	160	278	94		66	160	58.8%		41.3%
Batley Grammar School	160			135	25	160		84.4%	15.6%
	<b>763</b>	<b>602</b>							

# Planning Area 25: Cleckheaton, Heckmondwike, Liversedge & Mirfield



Contains Ordnance Survey data  
© Crown Copyright and database right 2023

- ❖ Castle Hall Academy
- ❖ Heckmondwike Grammar School
- ❖ Spen Valley High School
- ❖ The Mirfield Free Grammar
- ❖ Whitcliffe Mount, A SHARE Academy

**Overview:** Table B on page 224 and the chart on page 222 illustrate that the future year 7 cohort sizes of young people resident in this planning area show to decline steadily. In the wider area of North Kirklees, there has been a period of high demand where a significant number of planned bulge places were required. Beyond 2024, it is likely that far fewer bulge places, if any, will be needed.

Geographically located in this planning area are the following: Heckmondwike Grammar School, a selective academy with a sixth form that has a pupil population residing across Kirklees and beyond; Spen Valley High School, situated in Liversedge, and Whitcliffe Mount, A SHARE Academy, situated in Cleckheaton; and Castle Hall Academy and The Mirfield Free Grammar, both located in Mirfield. The Mirfield Free Grammar also has a sixth form.

This planning area is adjacent to two neighbouring local authorities, Calderdale and Bradford, and there continues to be inward migration of pupils from these areas accessing secondary education in Kirklees.

**In 2022/2023** on national offer day all Y7 places were full, with the exception of Castle Hall Academy. Additional capacity as a bulge year was added in this planning area, with an additional 15 places at Castle Hall Academy. Heckmondwike Grammar School admitted over PAN by 30 places to 210, as it has done for a number of years. Spen Valley High School offered an additional 10 places above its PAN of 190 to admit 200 pupils. The Mirfield Free Grammar once more offered an additional 29 places over their PAN of 221 to admit 250 pupils.

**In 2023/24** additional capacity as a bulge year was added in this planning area, with an additional 10 places at Castle Hall Academy. Heckmondwike Grammar School again offered an additional 30 places over PAN to 210. On national offer day all Y7 places were full, with the exception of Castle Hall Academy and a small number of the additional places at Heckmondwike Grammar School, which filled soon after.

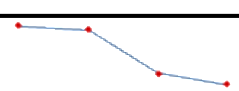
The pattern of pupil distribution illustrates that around 75% of children that live in this planning area attend schools in the area, whilst 15% are securing places in neighbouring planning areas, particularly Dewsbury and Batley, Birstall, Birkenshaw and Gomersal. There is a large number of pupils, around 24%, attending school here from neighbouring planning areas, with a smaller percentage of around 11% from other local authorities (mainly children living in Leeds attending Heckmondwike Grammar School).

**For 2024, 2025 and 2026** NHS population data indicate a steadily declining trend. There will remain sufficient capacity to meet local demand. Given the large net influx of children from surrounding areas, particularly from Dewsbury and the selective nature of some local provision, this area needs to remain under review.

In the period leading up to the 2022 population peak there was high demand for places in the wider area of North Kirklees. Through the goodwill and collaboration of the Kirklees school system, this was managed by the carefully planned introduction of bulge places rather than the introduction of a new school. These bulge classes are still working their way through the school system and this does continue to present some challenges to in-year pupil movement. However, the pressure on Year 7 places will begin to ease as the population declines.

There are two sites with planning permission for 425 dwellings planned where development has not yet started. There are a further three sites totalling 355 dwellings where development has commenced and should be complete in around two years.

Looking longer term (+5 years), there is a strategic development site in the Kirklees Local Plan on the border of this planning area and the Dewsbury planning area. The demand for places generated by this will need monitoring over a number of years, alongside the expected decline in population.

<b>Place planning summary for Planning Area 25. Cleckheaton, Heckmondwike, Liversedge &amp; Mirfield</b>	
Place planning data for five cohorts of children: Years 7,8,9,10,11 <i>From NHS Oct 2022 and School Census Jan 2023</i> <i>Note numbers in [square brackets] show the <b>average</b> number of children per year group</i>	
<b>4428 [886] children live in this PA (NHS)</b> <ul style="list-style-type: none"> <li>3337 [667] go to schools in this PA</li> <li>673 [135] go to schools in other Kirklees PAs</li> <li>78 [16] go to schools in non-mainstream provisions</li> <li>182 [36] go to schools in other LAs</li> <li>158 [32] are unknown</li> </ul>	<b>5132 [1026] children go to school in this PA (Census)</b> <ul style="list-style-type: none"> <li>3337 [667] Live in this PA</li> <li>1221 [244] Live in other PAs</li> <li>574 [115] Live outside Kirklees</li> </ul>
Average number of places used per year group Number of Year 7 places available Trend in number of children living in this PA per year group	1026 1021  <b>Steady decline</b>
Place planning strategy (assuming current patterns of migration, housing occupancy, parental preference etc) <ul style="list-style-type: none"> <li>Based on population data the projected need for places is within the capacity of available places</li> <li>On balance, significantly more children travel IN to schools in the PA from neighbouring PAs than travel out to schools in other PAs</li> <li>In the wider area of North Kirklees, there has been a period of high demand where a significant number of planned bulge places were required. In future, it is likely that far fewer bulge places, if any, will be needed.</li> </ul>	

**Planning Area 25. Cleckheaton, Heckmondwike, Liversedge & Mirfield**

**Table C. Where do children living in the Cleckheaton, Heckmondwike, Liversedge & Mirfield planning area go to school?**

Years 7-11 (Jan 2023)

School Attended	Batleyford C E (VC) Primary School	Co-op Academy Smithies Moor	Crossley Fields J & I School	Crowlees CE (VC) J & I School	Hartshead J & I School	Headlands CE (VC) J I & N School	Heaton Avenue, A SHARE Primary Academy	Heckmondwike Primary School	High Bank J I & N School	Hightown J I & N School	Hopton Primary School	Howard Park Community School	Littleton J I & N School	Milbridge, A SHARE Primary Academy	Norristhorpe J & I School	Old Bank Academy	Roberttown CE (VC) J & I School	Scholes Village Primary School	Whitechapel Church of England Primary School	Grand Total
All Saints Catholic College		1		1							1							1		4
Batley Girls High School		83					1	112		3		3		23	11		1		1	238
Batley Grammar School		19		1				21		2	1	1			2					57
BBG Academy		5	2		1	3	3	4	4			2	2	7	2	2	1	1	16	55
Castle Hall Academy	13	20	21	21	1	3	1	32	5	3	29	3	1	15	6	32	4	1		211
Heckmondwike Grammar School	13	33	8	19	3	23	8	28	4	10	13	12	1	18	13	15	15	5	10	251
Holmfirth High School																1				1
Honley High School														1			1			2
King James's School			1													2				3
Manor Croft Academy		3					1	11			3			1						19
Moor End Academy							1	1	1	2										5
Netherhall Learning Campus High School																			1	1
Newsome Academy		1					1											2		4
Royds Hall, A Share Academy						1										1				2
Scissett Middle School																	1			1
Shelley College, A Share Academy											1					1				2
Spenn Valley High School	1	111	2		10	164	2	133	6	15	2	4	29	146	158	9	109		2	903
St John Fisher Catholic Voluntary Academy		46		1	1	1	3	55	2	2	3	6		15	14	3	4		4	160
The Mirfield Free Grammar	173	6	172	137	4	6	1	22	2		175	3	3	9	10	216	18	2	1	960
Thornhill Community Academy, A SHARE Academy		2						1					1	1	2	1	2		1	11
Upper Batley High School	1	32				1		20	1	2		2		16		1				77
Westborough High School		7		2				18		1	1			2						31
Whitcliffe Mount, A SHARE Academy	1	6	1			11	152	1	98	166		148	4	9	4	2	1	172	236	1012
<b>Grand Total</b>	<b>202</b>	<b>375</b>	<b>207</b>	<b>182</b>	<b>20</b>	<b>213</b>	<b>174</b>	<b>459</b>	<b>123</b>	<b>206</b>	<b>229</b>	<b>184</b>	<b>41</b>	<b>270</b>	<b>222</b>	<b>286</b>	<b>157</b>	<b>184</b>	<b>276</b>	<b>4010</b>

**Planning Area 25. Cleckheaton, Heckmondwike, Liversedge & Mirfield**

**Table D: Where do children attending school in Cleckheaton, Heckmondwike, Liversedge & Mirfield live?**

Years 7-11 (Jan 2023)

PAA of Residence	School Attended					Grand Total
	Castle Hill Academy	Heckmondwike Grammar School	Spenn Valley High School	The Mirfield Free Grammar	Whitcliffe Mount, A SHARE Academy	
All Hallows' CE (VA) Primary School / Hill View Academy KS2		1				1
Ashbrow School	3	5				8
Batleyford CE (VC) Primary School	13	13	1	173	1	201
Berry Brow I & N School / Newsome Junior School		3				3
Birkby I & N School / Birkby Junior School	4	10		1	1	16
Birkenshaw CE(C) Primary School		12	1		8	21
Birstall Primary Academy	1	5	3	4	5	18
Boothroyd Primary Academy	25	12	1	4		42
Carlinghow Academy	3	9	7	4	5	28
Carlton J & I School		2		1		3
Christ Church CE Academy	4	1		1		6
Co-op Academy Smithies Moor	20	33	111	6	6	176
Crossley Fields J & I School	21	8	2	172	1	204
Crow Lane Primary and Foundation Stage School		1				1
Crowlees CE (VC) J & I School	21	19		137		177
Dalton Junior Infant and Nursery School	3	2		1		6
Denby Dale First and Nursery School		1				1
Diamond Wood Community Academy / Ravensthorpe CE (VC) Junior School	341	7	1	98	1	448
Earlsheaton Infant School / Bywell CE (VC) Junior School	3	10				13
East Bierley CE(VC) Primary School	1	4		1	2	8
Eastborough J I & N School	7	1				8
Emley First School		1				1
Field Lane J I & N School		1				1
Fieldhead Primary Academy	1	1	4	1	3	10
Fixby J & I School		6				6
Flockton CE (VC) First School		1		3		4
Golcar J I & N School		1				1
Gomersal St Mary's CE(VC) Primary School / Gomersal Primary School	2	26	8		102	138
Grange Moor Primary School		2		1		3
Hanging Heaton CE (VC) J & I School		2	1			3
Hartshead J & I School	1	3	10	4		18
Headlands CE (VC) J I & N School	3	23	164	6	11	207
Healey J I & N School		12	5	3	1	21
Heaton Avenue, A SHARE Primary Academy	1	8	2	1	152	164
Heckmondwike Primary School	32	28	133	22	1	216
High Bank J I & N School	5	4	6	2	98	115
Highburton CE (VC) First School		1				1
Hightown J I & N School	3	10	15		166	194
Hill View Academy	1	1		2		4
Hillside Primary School		1				1
Honley CE(VC) Junior, Infant & Nursery School		1				1
Hopton Primary School	29	13	2	175		219
Howard Park Community School	3	12	4	3	148	170
Kirkheaton Primary School	4	2		4		10
Lepton CofE Primary Academy	2	3				5
Lindley Church of England Infant School / Lindley Junior School		4				4
Linthwaite Clough J I & Early Years Unit		1				1
Littletown J I & N School	1	1	29	3	4	38
Lowerhouses CE (VC) Junior Infant and Early Years School	2					2
Lydgate J & I School		8				8
Manorfield I & N School / Staincliffe CE (VC) Junior School	6	23	7	1	1	38
Meltham Moor Primary School		2				2
Mill Lane Primary School		3	2			5
Millbridge, A SHARE Primary Academy	15	18	146	9	9	197
Moorlands Primary School		1			1	2
Mount Pleasant Primary School		1				1
Netherhall St James CE(VC) I & N School / Netherhall Learning Campus Junior School	2	3		1		6
Norrsthorpe J & I School	6	13	158	10	4	191
Oak CE (VC) Primary School (Junior)/Beaumont Primary Academy		4				4
Old Bank Academy	32	15	9	216	2	274
Orchard Primary Academy	2			2	1	5
Overthorpe C of E Academy	5	4		2		11
Park Road J I & N School		6				6
Pentland I & N School / Headfield CE (VC) Junior School	5	2		1		8
Purlwell I & N School / Hyrstmount Junior School	4	6		1		11
Roberttown CE (VC) J & I School	4	15	109	18	1	147
Rowley Lane J I & N School		1		1		2
Savile Town CE(VC) I & N School / Headfield CE (VC) Junior School		5		1		6
Scholes Village Primary School	1	5		2	172	180
Shaw Cross I & N School / Bywell CE (VC) Junior School	3	11	1	1		16
Spring Grove J I & N School		3				3
St John's CE(C) Primary School / Westmoor Primary School KS2	16	22	1	7		46
St Thomas CE (VC) Primary School	15	6		15	4	40
Thornhill J & I School	3	3		3		9
Thornhill Lees CE (VC) I & N School / Headfield CE (VC) Junior School	43	24	1	23		91
Warwick Road Primary School		6				6
Westmoor Primary School	8	10	4	3		25
Whitechapel Church of England Primary School		10	2	1	236	249
Windmill Church of England Primary School		20	1		1	22
<b>Grand Total</b>	<b>730</b>	<b>578</b>	<b>951</b>	<b>1151</b>	<b>1148</b>	<b>4558</b>



Tables E(i) to E(iii) below show how Year 7 places were allocated in this planning area at each of the last three National Offer Days, compared to the number of Year 7 places available at each school and the number of applicants resident in each school's Priority Admission Area (PAA). Blanks in the tables indicate a school does not have a PAA.

**Table E (i)**

Castle Hall Academy offered an additional 10 bulges places over PAN and Heckmondwike Grammer offered 30 places over PAN.

2023/24	No of Places	Total No of applicants living in PAA	Place allocated				Place allocated		
			Resident in Priority Admission Area allocated	Resident in Planning Area allocated	Resident outside Planning Area allocated	TOTAL No of places allocated	Resident in Priority Admission Area allocated	Resident in Planning Area allocated	Resident outside Planning Area allocated
<b>Cleckheaton, Heckmondwike, Liversedge &amp; Mirfield</b>									
Castle Hall Academy	190			59	118	177		33.3%	66.7%
Heckmondwike Grammar School	210			34	173	207		16.4%	83.6%
Spen Valley High School	190	356	179	6	5	190	94.2%	3.2%	2.6%
The Mirfield Free Grammar	221	236	183	24	14	221	82.8%	10.9%	6.3%
Whitcliffe Mount School	250	434	233	5	12	250	93.2%	2.0%	4.8%
	<b>1061</b>	<b>1026</b>	<b>595</b>	<b>128</b>	<b>322</b>	<b>1045</b>	<b>56.9%</b>	<b>12.2%</b>	<b>30.8%</b>

**Table E (ii)**

Castle Hall Academy offered an additional 15 bulge places over PAN and Spen Valley High School offered an additional 10 bulge places over PAN. Heckmondwike Grammar offered 30 places over PAN and The Mirfield Free Grammar offered an additional 29 places over PAN.

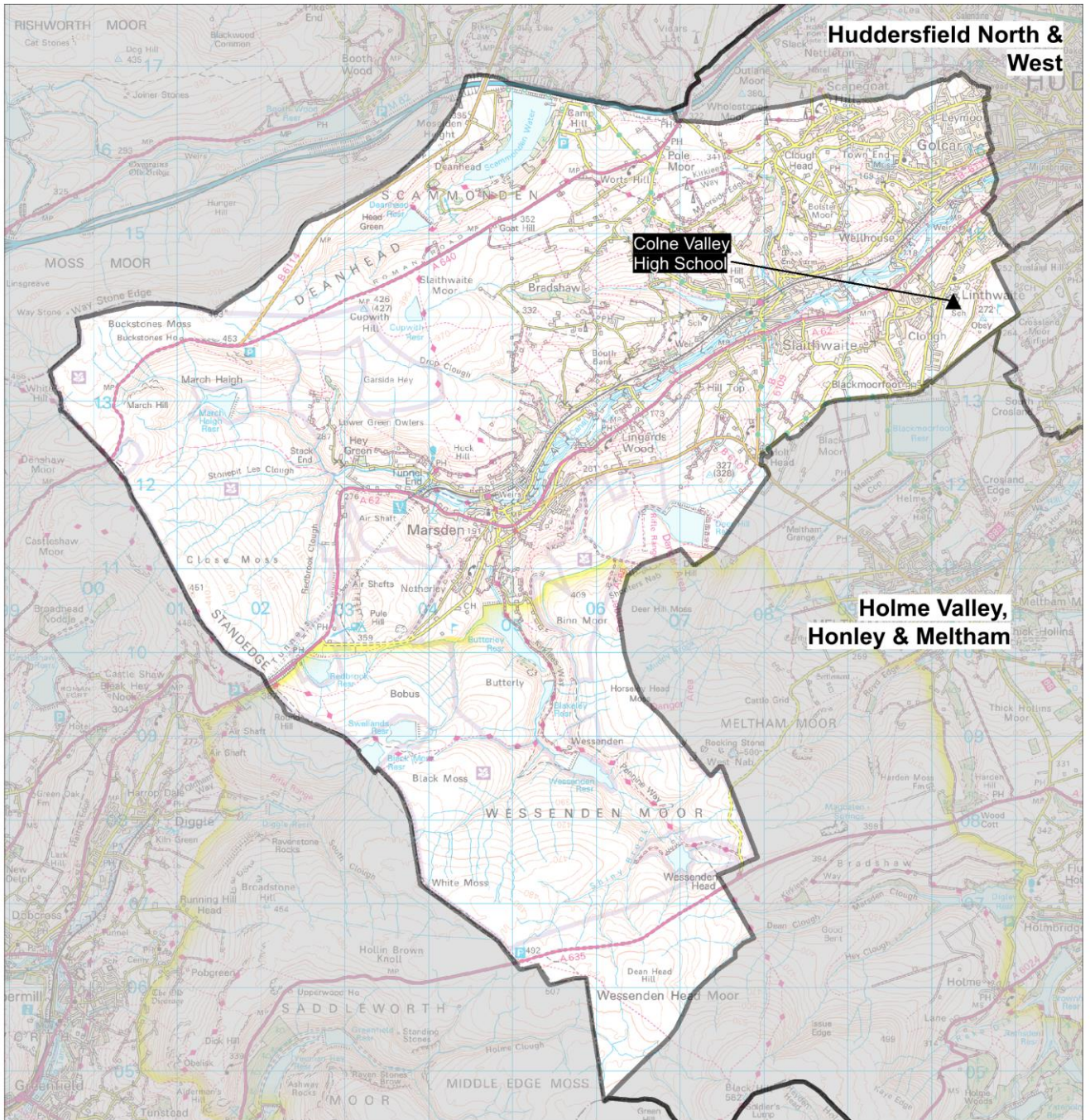
2022/23	No of Places	Total No of applicants living in PAA	Place allocated				Place allocated		
			Resident in Priority Admission Area allocated	Resident in Planning Area allocated	Resident outside Planning Area allocated	TOTAL No of places allocated	Resident in Priority Admission Area allocated	Resident in Planning Area allocated	Resident outside Planning Area allocated
<b>Cleckheaton, Heckmondwike, Liversedge &amp; Mirfield</b>									
Castle Hall Academy	195			63	122	185		34.1%	65.9%
Heckmondwike Grammar School	210			49	161	210		23.3%	76.7%
Spen Valley High School	200	387	196	1	3	200	98.0%	0.5%	1.5%
The Mirfield Free Grammar	250	222	165	30	55	250	66.0%	12.0%	22.0%
Whitcliffe Mount School	250	450	240	3	7	250	96.0%	1.2%	2.8%
	<b>1105</b>	<b>1059</b>	<b>601</b>	<b>146</b>	<b>348</b>	<b>1095</b>	<b>54.9%</b>	<b>13.3%</b>	<b>31.8%</b>

**Table E (iii)**

Castle Hall Academy offered an additional 30 bulge places over PAN. Heckmondwike Grammar offered 30 places over PAN and The Mirfield Free Grammar offered an additional 29 places over PAN.

2021/22	No of Places	Total No of applicants living in PAA	Place allocated				Place allocated		
			Resident in Priority Admission Area allocated	Resident in Planning Area allocated	Resident outside Planning Area allocated	TOTAL No of places allocated	Resident in Priority Admission Area allocated	Resident in Planning Area allocated	Resident outside Planning Area allocated
<b>Cleckheaton, Heckmondwike, Liversedge &amp; Mirfield</b>									
Castle Hall Academy Trust	210			32	105	137		23.4%	76.6%
Heckmondwike Grammar School	210			48	162	210		22.9%	77.1%
Spen Valley High School	190	372	187	2	1	190	98.4%	1.1%	0.5%
The Mirfield Free Grammar	250	231	204	11	35	250	81.6%	4.4%	14.0%
Whitcliffe Mount School	250	454	245	1	4	250	98.0%	0.4%	1.6%
	<b>1110</b>	<b>1057</b>							

# Planning Area 26: Colne Valley



Contains Ordnance Survey data  
© Crown Copyright and database right 2023

❖ Colne Valley High School

**Overview:** Table B on page 224 and the chart on page 222 illustrate that the future year 7 cohort sizes of young people resident in this planning will on balance slightly decline, with some fluctuations. Colne Valley High School serves a wide geographical area made up from rural and semi-rural areas.

**In 2022/23** on national offer day there were no vacancies.

**In 2023/24** on national offer day there were, again, no vacancies.

There remains modest pupil movement in and out of the planning area. This is partly attributed to the children living in this planning area who were formerly pupils at Lily Park, a SHARE Primary Academy. In October 2022, the Regional Schools Commissioner approved a proposal by SHARE Multi-Academy Trust to discontinue the provision of primary education at Lily Park. Lily Park was part of Royds Hall, an all-through school with an age range of 4-16 years situated in the Huddersfield South West primary planning area. Following the RSC's decision, all Royds Hall's primary provision has been delivered from its Luck Lane site in the Huddersfield South West planning area.

Pupils who were on roll at Lily Park were offered places at Luck Lane, a SHARE Academy. The former Priority Admission Area for Lily Park became the Priority Admission Area for Luck Lane with effect from 2023/24.

Because Royds Hall is an all-through school, pupils on roll in its primary phase have had an automatic right to continue their education in its secondary phase. However, in October 2023, the DfE Regional Director (formerly the Regional Schools Commissioner) approved a proposal by SHARE Multi-Academy Trust to de-amalgamate Luck Lane and Royds Hall to create two separate schools. This change, which is not expected to take place until after National Offer Day 2024, will mean pupils at Luck Lane will no longer automatically be allocated a place at Royds Hall, although they will still be of high priority for a place according to its oversubscription criteria.

The pattern of pupil distribution illustrates that 77% of children who live in this planning area attend schools in the area, whilst 13% are securing places in neighbouring planning areas. 18% of pupils attending school here are from neighbouring planning areas.

**For 2024, 2025 and 2026** NHS population data suggests a slight decline in population. Beyond this period, there is evidence to suggest a future population peak in 2027 only. There is one site with planning permission for 125 dwellings that has commenced and is expected to be complete in around three years. It is not anticipated there is a need for establishing additional places.

## Place planning summary for Planning Area 26. Colne Valley

Place planning data for five cohorts of children: Years 7,8,9,10,11

From NHS Oct 2022 and School Census Jan 2023

Note numbers in [square brackets] show the **average** number of children per year group

### 1502 [300] children live in this PA (NHS)

- 1164 [233] go to schools in this PA
- 202 [40] go to schools in other Kirklees PAs
- 19 [4] go to schools in non-mainstream provisions
- 48 [10] go to schools in other LAs
- 69 [14] are unknown

### 1426 [285] children go to school in this PA (Census)

- 1164 [233] Live in this PA
- 259 [52] Live in other PAs
- 3 [1] Live outside Kirklees

Average number of places used per year group

285

Number of Year 7 places available

287

Trend in number of children living in this PA per year group

**Slight decline with fluctuations**



Place planning strategy (assuming current patterns of migration, housing occupancy, parental preference etc)

- Based on population data the projected need for places is within the capacity of available places
- On balance, slightly more children travel IN to schools in the PA from neighbouring PAs than travel out to schools in other PAs
- No need for additional places

## Planning Area 26. Colne Valley

Table C: Where do children living in the Colne Valley planning area go to school?

Years 7-11 (Jan 2023)

School Attended	Clough Head J & I School	Golcar J I & N School	Linthwaite Clough J I & Early Years Unit	Luck Lane, A SHARE Primary Academy	Marsden I & N School / Marsden Junior School	Nields J I & N School	Scapegoat Hill J & I School	Slaithwaite CE (VC) J & I School	Wellhouse J & I School	Wilberlee J & I School	Grand Total
All Saints Catholic College		4	3	1		1		2	1		12
Colne Valley High School	25	201	301	101	240	96	29	104	19	48	1164
Heckmondwike Grammar School		1	1								2
Holmfirth High School		1	1		2	2					6
Honley High School		3	11	1	9	3		2		2	31
Moor End Academy			4	5	2	2		2			15
Netherhall Learning Campus High School				2	1			1			4
Newsome Academy		1	3	2		1				1	8
North Huddersfield Trust School				1	1						2
Royds Hall, A Share Academy		18	4	54				2	1		79
Salendine Nook High School Academy		11	4	21	1		5		1		43
<b>Grand Total</b>	<b>25</b>	<b>240</b>	<b>332</b>	<b>188</b>	<b>256</b>	<b>105</b>	<b>34</b>	<b>113</b>	<b>22</b>	<b>51</b>	<b>1366</b>

## Planning Area 26. Colne Valley

**Table D: Where do children attending school in Colne Valley live?**

Years 7-11 (Jan 2023)

**School Attended**

PAA of Residence	School Attended	
	Colne Valley High School	Grand Total
All Hallows' CE (VA) Primary School / Hill View Academy KS2	3	3
Birkby I & N School / Birkby Junior School	2	2
Christ Church CE Academy	1	1
Clough Head J & I School	25	25
Crow Lane Primary and Foundation Stage School	38	38
Dalton Junior Infant and Nursery School	2	2
Farnley Tyas CE (VC) First School	1	1
Golcar J I & N School	201	201
Hillside Primary School	1	1
Lindley Church of England Infant School / Lindley Junior School	2	2
Linthwaite Clough J I & Early Years Unit	301	301
Lowerhouses CE (VC) Junior Infant and Early Years School	1	1
Luck Lane, A SHARE Primary Academy	101	101
Marsden I & N School / Marsden Junior School	240	240
Meltham CE (VC) Primary School	7	7
Meltham Moor Primary School	19	19
Moorlands Primary School	6	6
Mount Pleasant Primary School	1	1
Netherton I & N School / South Crosland CE (VA) Junior School	1	1
Nields J I & N School	96	96
Oak CE (VC) Primary School (Junior)/Beaumont Primary Academy	40	40
Paddock J I & N School	14	14
Reinwood I & N School / Reinwood Community Junior School	3	3
Scapegoat Hill J & I School	29	29
Slaithwaite CE (VC) J & I School	104	104
Spring Grove J I & N School	4	4
St Thomas CE (VC) Primary School	1	1
Upperthong J & I School	1	1
Wellhouse J & I School	19	19
Wilberlee J & I School	48	48
Woodside Green, A SHARE Primary Academy	111	111
<b>Grand Total</b>	<b>1423</b>	<b>1423</b>

Tables E(i) to E(iii) below show how Year 7 places were allocated in this planning area at each of the last three National Offer Days, compared to the number of Year 7 places available at each school and the number of applicants resident in each school's Priority Admission Area (PAA). Blanks in the tables indicate a school does not have a PAA.

**Table E(i)**

2023/24	No of Places	Total No of applicants living in PAA	Place allocated				Place allocated		
			Resident in Priority Admission Area allocated	Resident in Planning Area allocated	Resident outside Planning Area allocated	TOTAL No of places allocated	Resident in Priority Admission Area allocated	Resident in Planning Area allocated	Resident outside Planning Area allocated
<b>Colne Valley</b>									
Colne Valley High School	287	274	228		59	287	79.4%		20.6%
	<b>287</b>	<b>274</b>	<b>228</b>		<b>59</b>	<b>287</b>	<b>79.4%</b>		<b>20.6%</b>

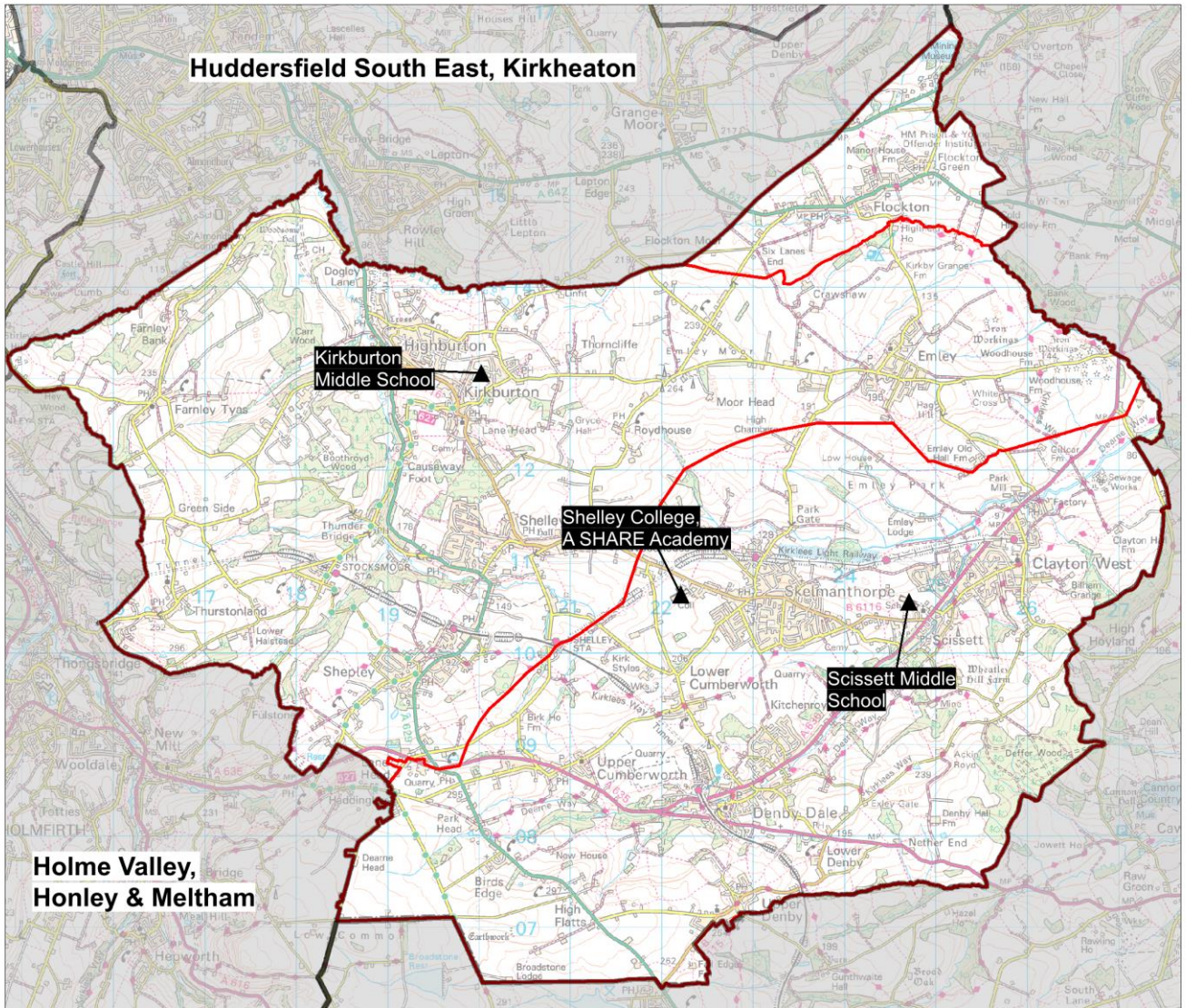
**Table E(ii)**

2022/23	No of Places	Total No of applicants living in PAA	Place allocated				Place allocated		
			Resident in Priority Admission Area allocated	Resident in Planning Area allocated	Resident outside Planning Area allocated	TOTAL No of places allocated	Resident in Priority Admission Area allocated	Resident in Planning Area allocated	Resident outside Planning Area allocated
<b>Colne Valley</b>									
Colne Valley High School	287	291	235		52	287	81.9%		18.1%
	<b>287</b>	<b>291</b>	<b>235</b>		<b>52</b>	<b>287</b>	<b>81.9%</b>		<b>18.1%</b>

**Table E(iii)**

2021/22	No of Places	Total No of applicants living in PAA	Place allocated				Place allocated		
			Resident in Priority Admission Area allocated	Resident in Planning Area allocated	Resident outside Planning Area allocated	TOTAL No of places allocated	Resident in Priority Admission Area allocated	Resident in Planning Area allocated	Resident outside Planning Area allocated
<b>Colne Valley</b>									
Colne Valley High School	287	283	240		47	287	83.6%		16.4%
	<b>287</b>	<b>283</b>	<b>240</b>		<b>47</b>	<b>287</b>	<b>83.6%</b>		<b>16.4%</b>

# Planning Area 27: Denby Dale, Kirkburton & Shelley



Contains Ordnance Survey data  
© Crown Copyright and database right 2023

- ❖ Kirkburton Middle School
- ❖ Scissett Middle School
- ❖ Shelley College, A SHARE Academy



**Overview:** Three tier system analysis within this section demonstrates the demand for secondary places from young people resident in this planning area will decline overall, albeit with some fluctuations.

Serving a semi-rural area of the local authority adjacent to Barnsley LA, this planning area has a three-tier system of education. There are two middle schools, with the normal transfer being at age 10 (into year 6) at Scissett Middle School and Kirkburton Middle School, and then at age 13 (into year 9) at Shelley College, A SHARE Academy which has sixth form provision.

**In 2022/23** at national offer day there were no vacancies in year 6 at either middle school. Scissett Middle School offered an additional 5 places over its PAN of 195 to admit 200 children in order to accommodate children on roll at feeder first schools, before its PAN increased permanently to 200 from 2023/24. Kirkburton Middle School offered 1 additional place over its PAN of 167 because the last qualifying children were twins. There were no vacancies in year 9 at Shelley College, which offered an additional 3 places over its PAN of 360 to admit 363 children.

**In 2023/24** at national offer day there were a very modest number of vacancies in year 6 at both middle schools. Scissett Middle School increased its PAN permanently to 200 from 2023/24. There were also vacancies in year 9 at Shelley College.

There is a mismatch between first school places (KS1 371 and KS2 378) and the secondary places (middle 367 and high 360). A contributing factor to this mismatch has been historic decisions by some own admission authority first schools to increase their PANs and/or admit over PAN. The middle and high schools have been flexible in admitting over PAN to accommodate local families, but this has created some challenges for them.

The pattern of pupil distribution illustrates that, based on year 7 to 11 at January 2023 census, around 85% of children who live in this planning area attend schools in the area, whilst 4% are securing places in neighbouring planning areas. 9% of pupils attending schools here are from neighbouring planning areas, with a smaller percentage of around 3% from other local authorities.

Additional analysis focused on admission data (Table 27 C page 221) at the transition points in the three-tier system suggests that relatively few children are being allocated schools in this area from outside the area. However, this fluctuates from year to year and there have been a number of successful appeals following the initial allocations.

**For 2024, 2025 and 2026** the NHS population data indicate a broadly static trend to 2025 in Year 6 middle school cohorts. Beyond this, further population decline is expected. Following a declining population trend for Y9 high school cohorts since 2021, NHS population data indicate a period of higher demand in 2024 and 2025. Beyond this period there are indications of further population decline.

Again, specific analysis relating to the three-tier system has been provided, focusing on population (Table 27 B page 220) and pupils already on roll in the system (Table 27 A page 219).

The current pupil on roll modelling (January Census 2023) assumes children in the first schools will move through the three-tier system regardless of where they live. This modelling indicates a similar trend in middle school pupil numbers to the population model, i.e. numbers follow a broadly static trend towards 2025, before declining further. For the high school, the modelling indicates a two-year peak in the number of children transferring from middle school in 2024 and 2025. Beyond this period, numbers are expected to decline. Taking this modelling into account, the combined demand for Year 9, 10 and 11 places reaches a peak in 2025 of 1,112 versus a high school capacity of 1,080 places. There may, therefore, be a need to consider some additional high school bulge places on a temporary basis.

There are two housing developments, one where building has commenced with 190 dwellings that is expected to be completed in around three years and one with approximately 50 dwellings where building hasn't commenced.

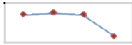

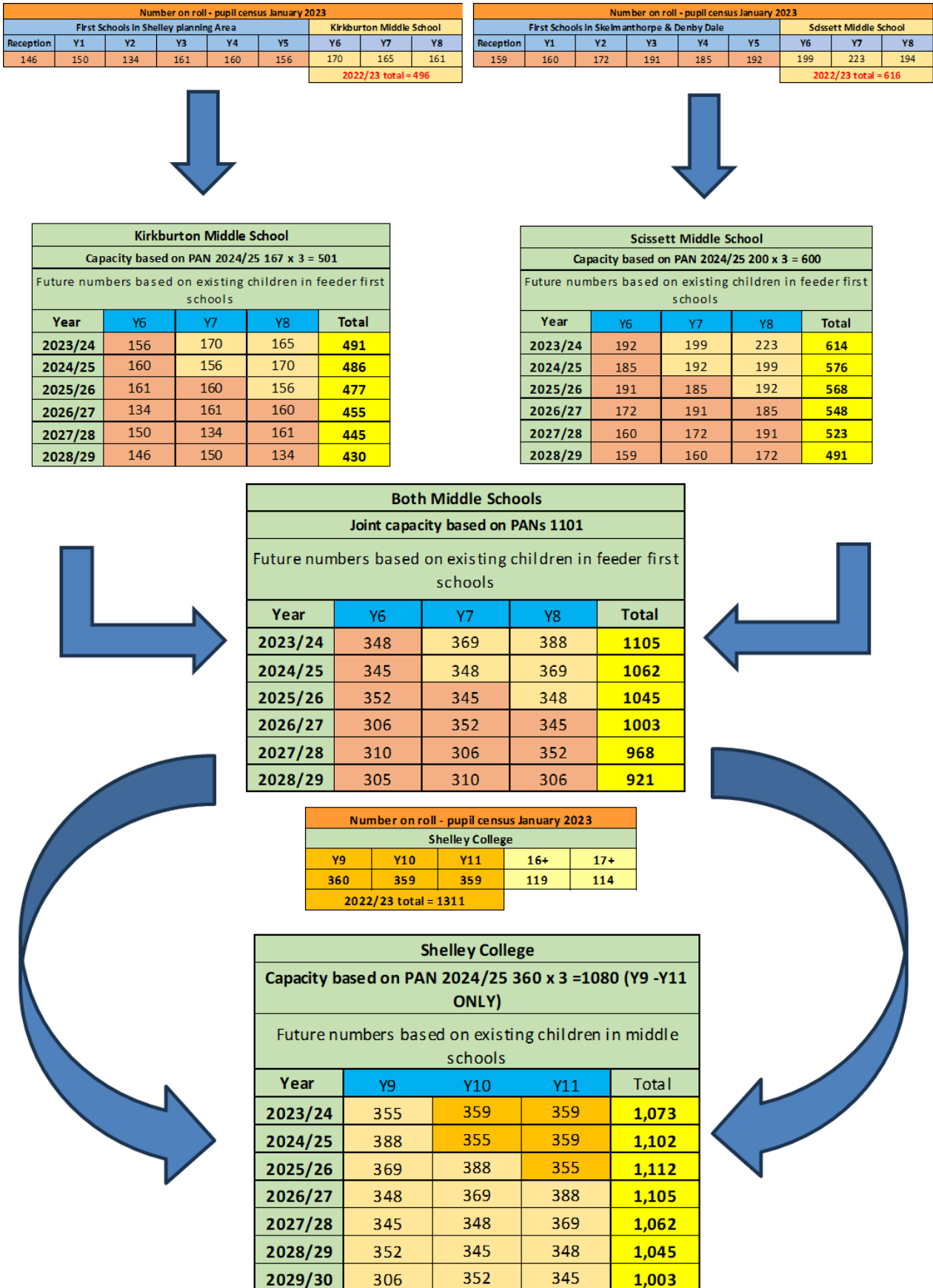
Place planning summary for Planning Area 27. Denby Dale, Kirkburton & Shelley	
Place planning data for five cohorts of children: Years 7,8,9,10,11 From NHS Oct 2022 and School Census Jan 2023 Note numbers in [square brackets] show the <b>average</b> number of children per year group	
<b>1893 [379] children live in this PA (NHS)</b> <ul style="list-style-type: none"> <li>• 1612 [322] go to schools in this PA</li> <li>• 82 [16] go to schools in other Kirklees PAs</li> <li>• 14 [3] go to schools in non-mainstream provisions</li> <li>• 31 [6] go to schools in other LAs</li> <li>• 154 [31] are unknown</li> </ul>	<b>1819 [364] children go to school in this PA (Census)</b> <ul style="list-style-type: none"> <li>• 1612 [322] Live in this PA</li> <li>• 160 [32] Live in other PAs</li> <li>• 47 [9] Live outside Kirklees</li> </ul>
Average number of places used per year group Number of Year 7 places available Trend in number of children living in this PA per year group	364 367 <b>Decline with fluctuations for both</b> Y6  and Y9 
Place planning strategy (assuming current patterns of migration, housing occupancy, parental preference etc) <ul style="list-style-type: none"> <li>• Based on population data the projected need for places is above the capacity of available places</li> <li>• On balance, more children travel IN to schools in the PA from neighbouring PAs than travel out to schools in other PAs</li> <li>• There has been pressure in the transition from first to middle schools partly caused by the mismatch of PANs. This is now having an impact on the high school, meaning some additional bulge places may be required. Future demand will be kept under review in light of the current housing development.</li> </ul>	

Table C. PAN 2024/25		
First School	KS1	371
	KS2	378
Middle School	367	
High School	360	

Table C shows the number of places that will be made available in 2024/25 in the three-tier system across all Key Stages.

**Table 27 A. Number on roll as at January 2023 feeding through the three-tier system.**



The tables above model the numbers of existing children who were on roll as of January 2023. The assumption used is that all first school pupils feed through to their associated middle schools and then the high school within the three-tier system.

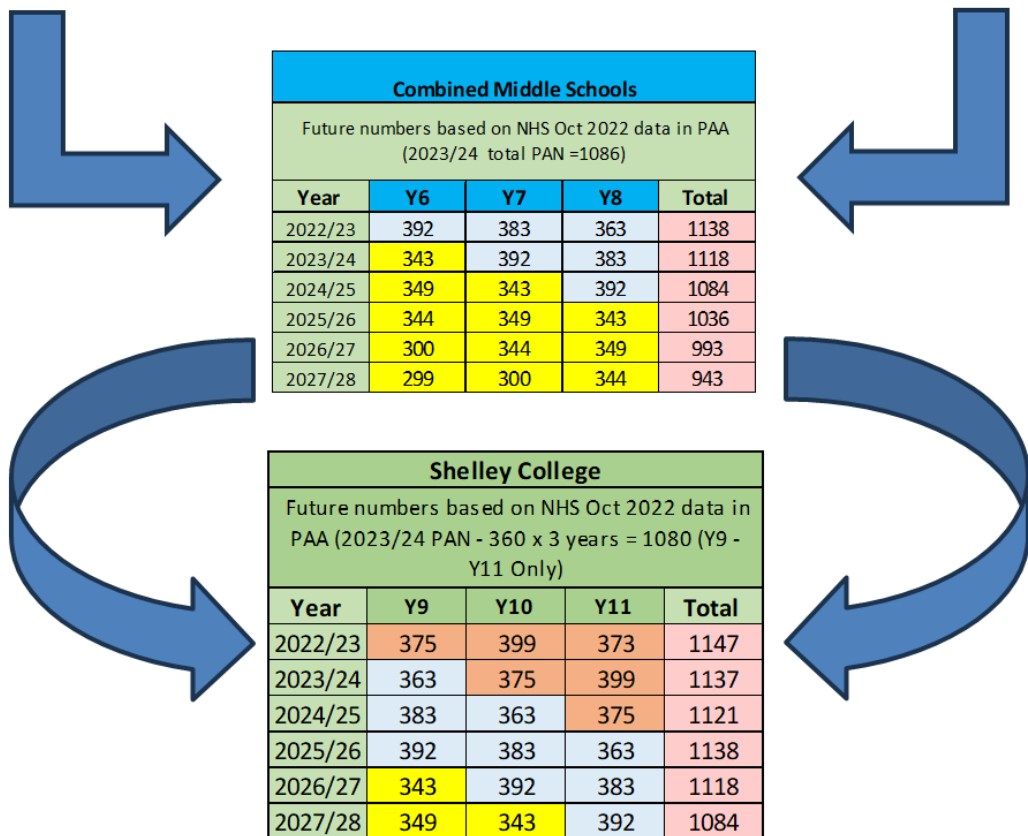
**Table 27 B. Number of children in the planning area based on NHS October 2022 working through the three-tier system.**

The first table shows the number of pupils in each cohort resident in the planning area for the school year 2022/23 based on NHS population data October 2022. The following illustrations model these existing pupils moving from the first school phase to the middle school phase and then onto the high school phase.

Number of children and young people living in Denby Dale, Kirkburton & Shelley (NHS Oct 2022)														
Age 31.8.2022>>	Future year 6 populations								Middle School and Secondary pupils 2022/23					
									Middle School			Secondary		
	2	3	4	5	6	7	8	9	10	11	12	13	14	15
Year 6 in	Y6 2030	Y6 2029	Y6 2028	Y6 2027	Y6 2026	Y6 2025	Y6 2024	Y6 2023	Y6	Y7	Y8	Y9	Y10	Y11
Year 9 in	Y9 2033	Y9 2032	Y9 2031	Y9 2030	Y9 2029	Y9 2028	Y9 2027	Y9 2026	Y9 2025	Y9 2024	Y9 2023			
Primary Planning Area for Shelley	111	119	133	126	122	138	153	142	174	156	160	155	187	171
Primary Planning Area for Skelmanthorpe and Denby Dale	153	149	163	173	178	206	196	201	218	227	203	220	212	202
Secondary Planning Area for Denby Dale, Kirkburton & Shelley	264	268	296	299	300	344	349	343	392	383	363	375	399	373

Kirkburton Middle School				
Future numbers based on NHS Oct 2022 data in PAA (2023/24 PAN - 167 x 3 years = 501)				
Year	Y6	Y7	Y8	Total
2022/23	174	156	160	490
2023/24	142	174	156	472
2024/25	153	142	174	469
2025/26	138	153	142	433
2026/27	122	138	153	413
2027/28	126	122	138	386

Scissett Middle School				
Future numbers based on NHS Oct 2022 data in PAA (2023/24 PAN - 195 x 3 years = 585)				
Year	Y6	Y7	Y8	Total
2022/23	218	227	203	648
2023/24	201	218	227	646
2024/25	196	201	218	615
2025/26	206	196	201	603
2026/27	178	206	196	580
2027/28	173	178	206	557



Combined Middle Schools				
Future numbers based on NHS Oct 2022 data in PAA (2023/24 total PAN = 1086)				
Year	Y6	Y7	Y8	Total
2022/23	392	383	363	1138
2023/24	343	392	383	1118
2024/25	349	343	392	1084
2025/26	344	349	343	1036
2026/27	300	344	349	993
2027/28	299	300	344	943

Shelley College				
Future numbers based on NHS Oct 2022 data in PAA (2023/24 PAN - 360 x 3 years = 1080 (Y9 - Y11 Only))				
Year	Y9	Y10	Y11	Total
2022/23	375	399	373	1147
2023/24	363	375	399	1137
2024/25	383	363	375	1121
2025/26	392	383	363	1138
2026/27	343	392	383	1118
2027/28	349	343	392	1084

**Table 27 C. Middle School and High School allocations based on Pupil Admissions data as national offers days 2023.**

**Kirkburton Middle School**

	2015/16		2016/17		2017/18		2018/19		2019/20		2020/21		2021/22		2022/23		2023/24	
Feeder First School	138	71.1%	153	91.6%	157	93.5%	158	94.6%	152	88.4%	149	90.3%	150	89.3%	154	91.7%	149	92.0%
Non-Feeder First School	4	2.1%	2	1.2%	4	2.4%	0		1	0.6%	12	7.3%	0		6	3.6%	2	1.2%
Other School	13	6.7%	12	7.2%	7	4.2%	9	5.4%	19	11.0%	4	2.4%	18	10.7%	8	4.8%	11	6.8%
	155		167		168		167		172		165		168		168		162	

**Scissett Middle School**

	2015/16		2016/17		2017/18		2018/19		2019/20		2020/21		2021/22		2022/23		2023/24	
Feeder First School	186	95.9%	185	97.9%	203	98.5%	192	95.5%	195	98.5%	184	94.4%	202	89.4%	192	96.0%	187	94.0%
Non-Feeder First School	7	3.6%	0	0.0%	1	0.5%	3	1.5%	2	1.0%	5	2.6%	10	4.4%	5	2.5%	5	2.5%
Other School	1	0.5%	4	2.1%	2	1.0%	6	3.0%	1	0.5%	6	3.1%	14	6.2%	3	1.5%	7	3.5%
	194		189		206		201		198		195		226		200		199	

**Shelley College**

	2015/16		2016/17		2017/18		2018/19		2019/20		2020/21		2021/22		2022/23		2023/24	
Kirkburton Middle	150	46.0%	165	46.5%	163	46.7%	164	45.6%	165	45.8%	160	43.8%	169	46.8%	165	45.5%	156	44.4%
Scissett Middle	173	53.1%	190	53.5%	182	52.1%	189	52.5%	190	52.8%	204	55.9%	192	53.2%	196	54.0%	193	55.0%
Other School	3	0.9%	0	0.0%	4	1.1%	7	1.9%	5	1.4%	1	0.3%	0	0.0%	2	0.6%	2	0.6%
	326		355		349		360		360		365		361		363		351	

**Planning Area 27. Denby Dale, Kirkburton & Shelley**

**Table C: Where do children living in the Denby Dale, Kirkburton & Shelley planning area go to school?**

Years 7-11 (Jan 2023)

School Attended	Birdsedge First School	Cumberworth CE ( VA ) First School	Denby CE ( VA ) First School	Denby Dale First and Nursery School	Emley First School	Farnley Tyas CE ( VC ) First School	Flockton CE ( VC ) First School	Highburton CE ( VC ) First School	Kaye's Academy	Kirkburton CE ( VA ) First School	Scissett CE ( VA ) Academy	Shelley First School	Shepley First School	Skelmanthorpe Academy	Thurstonland Endowed ( VC ) First School	Grand Total
BBG Academy												1				1
Colne Valley High School						1										1
Heckmondwike Grammar School				1	1		1	1								4
Holmfirth High School	1					4			2	3		5	1		18	34
Honley High School				1	2	2		2		1		1			3	12
King James's School				1			1	3	2	1	1	3		1		13
Kirkburton Middle School	1			2	23	8	3	44	4	48	2	64	50	7	8	264
Moor End Academy							1									1
Newsome Academy					1			2				1	1	1		6
Royds Hall, A Share Academy	1															1
Salendine Nook High School Academy								1								1
Scissett Middle School	15	15	11	85	5		50	2	74	1	28	3	10	91		390
Shelley College, A Share Academy	14	25	10	121	52	7	36	84	118	55	47	110	84	180	15	958
St John Fisher Catholic Voluntary Academy							1									1
The Mirfield Free Grammar							3									3
Thornhill Community Academy, A SHARE Academy							3				1					4
<b>Grand Total</b>	<b>32</b>	<b>40</b>	<b>21</b>	<b>211</b>	<b>84</b>	<b>22</b>	<b>99</b>	<b>139</b>	<b>200</b>	<b>109</b>	<b>79</b>	<b>188</b>	<b>146</b>	<b>280</b>	<b>44</b>	<b>1694</b>

## Planning Area 27. Denby Dale, Kirkburton & Shelley

**Table D: Where do children attending school in Denby Dale, Kirkburton & Shelley live?**

Years 7-11 (Jan 2023)

School Attended

PAA of Residence	Kirkburton Middle School	Scissett Middle School	Shelley College, A Share Academy	Grand Total
All Hallows' CE (VA) Primary School / Hill View Academy KS2	6		10	16
Ashbrow School		1	1	2
Birdsedge First School (The Mast Academy Trust)	1	15	14	30
Birkby I & N School / Birkby Junior School		1	2	3
Christ Church CE Academy			1	1
Crow Lane Primary and Foundation Stage School		1		1
Cumberworth CE ( VA ) First School		15	25	40
Dalton Junior Infant and Nursery School	5		11	16
Denby C E ( VA ) First School		11	10	21
Denby Dale First and Nursery School	2	85	121	208
Emley First School	23	5	52	80
Farnley Tyas CE (VC ) First School	8		7	15
Flockton CE (VC) First School	3	50	36	89
Grange Moor Primary School	4	1	4	9
Hepworth J & I School			6	6
Highburton CE (VC ) First School	44	2	84	130
Hill View Academy	9	1	6	16
Hillside Primary School	1			1
Honley CE(VC) Junior, Infant & Nursery School			2	2
Hopton Primary School			1	1
Kaye's Academy School	4	74	118	196
Kirkburton CE (VA ) First School	48	1	55	104
Kirkheaton Primary School	1		2	3
Lepton CofE Primary Academy	12		16	28
Lowerhouses CE (VC) Junior Infant and Early Years School	1		4	5
Meltham CE ( VC) Primary School	1		1	2
Meltham Moor Primary School			1	1
Moldgreen Community Primary School	1			1
Netherhall St James CE(VC) I & N School / Netherhall Learning Campus Junior	4		5	9
New Mill Infant School / New Mill Junior School (Learning Accord MAT)	1	4	6	11
Oak CE (VC) Primary School (Junior)/Beaumont Primary Academy			1	1
Old Bank Academy			1	1
Overthorpe C of E Academy	2		2	4
Roberttown CE (VC) J & I School		1		1
Rowley Lane J I & N School	5		8	13
Scholes J & I School		1		1
Scissett CE (VA ) Academy	2	28	47	77
Shelley First School	64	3	110	177
Shepley First School	50	10	84	144
Skelmanthorpe Academy School	7	91	180	278
Spring Grove J I & N School	1			1
St Thomas CE (VC) Primary School	2		1	3
Thurstonland Endowed (VC) First School	8		15	23
Uppershong J & I School			1	1
<b>Grand Total</b>	<b>320</b>	<b>401</b>	<b>1051</b>	<b>1772</b>

Tables E(i) to E(iii) below show how Year 6 and Year 9 places were allocated in this planning area at each of the last three National Offer Days, compared to the number of places available at each school and the number of applicants resident in each school's Priority Admission Area (PAA).

**Table E(i)**

2023/24	School	No of Places	Total No of applicants living in PAA	Place allocated				Place allocated		
				Resident in Priority Admission Area allocated	Resident in Planning Area allocated	Resident outside Planning Area allocated	TOTAL No of places allocated	Resident in Priority Admission Area allocated	Resident in Planning Area allocated	Resident outside Planning Area allocated
<b>Denby Dale, Kirkburton &amp; Shelley</b>										
Y6	Kirkburton Middle School	167	124	115	14	33	<b>162</b>	71.0%	8.6%	20.4%
Y6	Scissett Middle School	200	190	176	9	14	<b>199</b>	88.4%	4.5%	7.0%
Y9	Shelley College	360	310	310		41	<b>351</b>	88.3%	0.0%	11.7%

**Table E(ii)**

2022/23	School	No of Places	Total No of applicants living in PAA	Place allocated				Place allocated		
				Resident in Priority Admission Area allocated	Resident in Planning Area allocated	Resident outside Planning Area allocated	TOTAL No of places allocated	Resident in Priority Admission Area allocated	Resident in Planning Area allocated	Resident outside Planning Area allocated
<b>Denby Dale, Kirkburton &amp; Shelley</b>										
Y6	Kirkburton Middle School	167	155	147	9	12	<b>168</b>	87.5%	5.4%	7.1%
Y6	Scissett Middle School	200	202	192	6	2	<b>200</b>	96.0%	3.0%	1.0%
Y9	Shelley College	363	326	326		37	<b>363</b>	89.8%	0.0%	10.2%

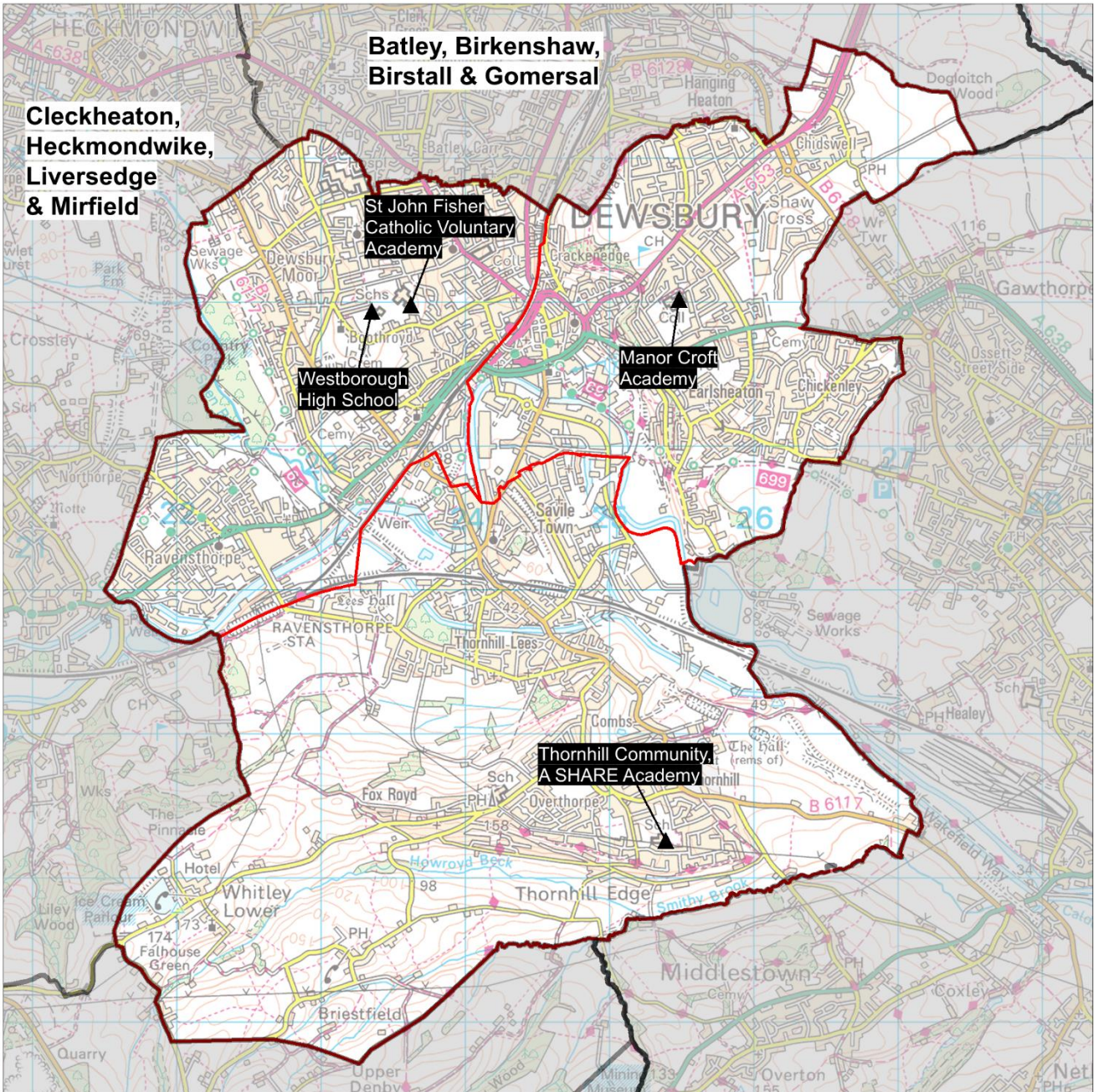
*On National Offer Day 2022 Kirkburton Middle School allocated over PAN.*

**Table E (iii)**

2021/22	School	No of Places	Total No of applicants living in PAA	Place allocated				Place allocated		
				Resident in Priority Admission Area allocated	Resident in Planning Area allocated	Resident outside Planning Area allocated	TOTAL No of places allocated	Resident in Priority Admission Area allocated	Resident in Planning Area allocated	Resident outside Planning Area allocated
<b>Denby Dale, Kirkburton &amp; Shelley</b>										
Y6	Kirkburton Middle School	167	141	134	1	33	<b>168</b>	79.8%	0.6%	19.6%
Y6	Scissett Middle School	195	206	204	7	15	<b>226</b>	90.3%	3.1%	6.6%
Y9	Shelley College	360	339	337		23	<b>360</b>	93.6%	0.0%	6.4%

*On National Offer Day 2022 Kirkburton Middle School and Scissett Middle School allocated over PAN.*

# Planning Area 28: Dewsbury



Contains Ordnance Survey data  
© Crown Copyright and database right 2023

- ❖ Manor Croft Academy
- ❖ St John Fisher Catholic Voluntary Academy
- ❖ Thornhill Community Academy, A SHARE Academy
- ❖ Westborough High School



**Overview:** Table B on page 224 and the chart on page 222 illustrate that the demand for year 7 places from young people resident in this planning area will be broadly static towards 2025 before declining (although the scale of future house-building may change this). In the wider area of North Kirklees, there has been a period of high demand where a significant number of planned bulge places were required. Beyond 2024, it is likely that far fewer bulge places, if any, will be needed.

Located in the Dewsbury planning area, St John Fisher Catholic Voluntary Academy is a faith school with a pupil population residing across North Kirklees and beyond. The school offers sixth form provision. Westborough High School is located in the Dewsbury West part of the planning area; Manor Croft Academy is located in the Dewsbury East part of the planning area and borders the neighbouring authorities of Leeds and Wakefield. Thornhill Community Academy, A SHARE Academy is located in the Dewsbury South part of the planning area and is adjacent to Wakefield local authority.

**In 2022/23** Working closely with schools in this area, 80 additional places were added as a bulge year:

- Manor Croft Academy +30 on a PAN of 180 to 210
- Thornhill Community Academy, A SHARE Academy +30 on a PAN of 180 to 210
- Westborough High School +20 on a PAN of 180 to 200

At national offer day there were a very small number of vacancies at Thornhill Community Academy, A SHARE Academy.

**In 2023/24** Working closely with schools in this area once again, 80 additional places were added as a bulge year:

- Manor Croft Academy +30 on a PAN of 180 to 210
- Thornhill Community Academy, A SHARE Academy +30 on a PAN of 180 to 210
- Westborough High School +20 on a PAN of 180 to 200

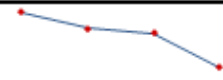
At national offer day all schools were full, apart from St John Fisher Catholic Voluntary Academy which had one vacancy.

The pattern of pupil distribution illustrates that 60% of children that live in this planning area attend schools in the area. 24% are securing places in neighbouring planning areas, particularly in single gender provision in the Batley, Birstall, Birkenshaw and Gomersal planning area, and also at schools in the Cleckheaton, Heckmondwike, Liversedge and Mirfield planning area. There are around 18% of pupils who are attending schools here from neighbouring planning areas, with a much smaller percentage of around 1% from other LAs.

**For 2024, 2025 and 2026** NHS population data indicates that demand will be broadly static towards 2025; thereafter demand is expected to decline. There are fewer places in this planning area than resident children, however, there are well established patterns of pupil movement into neighbouring planning areas and to other LAs. Factors influencing this movement include parental choice for single gender provision in Batley and the popularity of schools in the Cleckheaton, Heckmondwike, Liversedge and Mirfield planning area.

In the period leading up to the 2022 population peak there was high demand for places in the wider area of North Kirklees. Through the goodwill and collaboration of the Kirklees school system, this was managed by the carefully planned introduction of bulge places rather than the introduction of a new school. These bulge classes are still working their way through the school system and this does continue to present some challenges to in-year pupil movement. However, the pressure on Year 7 places will begin to ease as the population declines.

There is a housing development in this planning area providing 280 dwellings that has commenced and is due to be complete in around five years. There are two strategic development sites in the Kirklees Local Plan in this planning area. Given the concentration of housing development in this planning area, there is a risk that, even with the expected population decline, demand for places will exceed the available capacity. A strategic decision was made in 2021 to introduce a modest number of permanent places (30 per year group) at Manor Croft Academy to manage the previous population peak and future demand generated by these two sites.

<b>Place planning summary for Planning Area 28. Dewsbury</b>	
Place planning data for five cohorts of children: Years 7,8,9,10,11 <i>From NHS Oct 2022 and School Census Jan 2023</i> <i>Note numbers in [square brackets] show the <b>average</b> number of children per year group</i>	
<b>5111 [1022] children live in this PA (NHS)</b> <ul style="list-style-type: none"> <li>3058 [612] go to schools in this PA</li> <li>1214 [243] go to schools in other Kirklees PAs</li> <li>89 [18] go to schools in non-mainstream provisions</li> <li>288 [58] go to schools in other LAs</li> <li>462 [92] are unknown</li> </ul>	<b>3791 [758] children go to school in this PA (Census)</b> <ul style="list-style-type: none"> <li>3058 [612] Live in this PA</li> <li>684 [137] Live in other PAs</li> <li>49 [10] Live outside Kirklees</li> </ul>
Average number of places used per year group Number of Year 7 places available Trend in number of children living in this PA per year group	758 738  <p><b>Broadly static with fluctuations</b></p>
<b>Place planning strategy (assuming current patterns of migration, housing occupancy, parental preference etc)</b> <ul style="list-style-type: none"> <li>Based on population data the projected need for places is above the capacity of available places</li> <li>On balance, significantly more children travel OUT to schools in other PAs than travel in to schools in this PA With a large number also travelling OUT to schools in neighbouring LAs</li> <li>In the wider area of North Kirklees, there has been a period of high demand where a significant number of planned bulge places were required. In future, it is likely that far fewer bulge places, if any, will be needed.</li> </ul>	

**Planning Area 28. Dewsbury**

**Table C: Where do children living in the Dewsbury planning area go to school?**

Years 7-11 (Jan 2023)

School Attended	Boothroyd Primary Academy	Carlton J & I School	Diamond Wood Community Academy / Ravensthorpe CE (VC) Junior School	Earlsheaton Infant School / Bywell CE (VC) Junior School	Eastborough J I & N School	Hanging Heaton CE (VC) J & I School	Orchard Primary Academy	Overthorpe C of E Academy	Pentland I & N School / Headfield CE (VC) Junior School	Savile Town CE(VC) I & N School / Headfield CE (VC) Junior School	Shaw Cross I & N School / Bywell CE (VC) Junior School	St John's CE(C) Primary School / Westmoor Primary School KS2	Thornhill J & I School	Thornhill Lees CE (VC) I & N School / Headfield CE (VC) Junior School	Westmoor Primary School	Grand Total
All Saints Catholic College								1						2		3
Batley Girls High School	17	49	11	1	8	1	1		7	6	9	33	1	36	31	211
Batley Grammar School	1	8	4		2	4		3	2	1	2	31	2	6	15	81
BBG Academy																2
Castle Hall Academy	25		341	3	7		2	5	5		3	16	3	43	8	461
Heckmondwike Grammar School	12	2	7	10	1	2		4	2	5	11	22	3	24	10	115
King James's School													1			1
Kirkburton Middle School								2								2
Manor Croft Academy	36	11	7	163	136	29	206	6	3	6	220	38	2	17	8	888
Moor End Academy	2								1					2		5
Newsome Academy	1		1								1			2		5
North Huddersfield Trust School				1												1
Shelley College, A Share Academy								2								2
Spenn Valley High School	1		1			1					1	1		1	4	10
St John Fisher Catholic Voluntary Academy	119	19	18	10	24	2	16	11	1		20	115	14	15	113	497
The Mirfield Free Grammar	4	1	98				2	2	1	1	1	7	3	23	3	146
Thornhill Community Academy, A SHARE Academy	7		9	5	1		4	133	77	31	1	3	150	422	8	851
Upper Batley High School	11	50	11	2	9	2	1		7	2	3	22	3	24	20	167
Westborough High School	220	17	185	5	10		4	2	13	20	5	182	3	45	111	822
Whitcliffe Mount, A SHARE Academy			1				1									2
<b>Grand Total</b>	<b>456</b>	<b>157</b>	<b>694</b>	<b>200</b>	<b>198</b>	<b>41</b>	<b>237</b>	<b>171</b>	<b>119</b>	<b>72</b>	<b>277</b>	<b>470</b>	<b>185</b>	<b>662</b>	<b>333</b>	<b>4272</b>

## Planning Area 28. Dewsbury

Table D: Where do children attending school in Dewsbury live?

Years 7-11 (Jan 2023)

PAA of Residence	School Attended				Grand Total
	Manor Croft Academy	St John Fisher Catholic Voluntary Academy	Thornhill Community Academy, A SHARE Academy	Westborough High School	
Ashbrow School				3	3
Birkby I & N School / Birkby Junior School			2		2
Birkenshaw CE(C) Primary School		4			4
Birstall Primary Academy		16	2	1	19
Boothroyd Primary Academy	36	119	7	220	382
Carlinghow Academy	9	70	2	3	84
Carlton J & I School	11	19		17	47
Christ Church CE Academy				3	3
Co-op Academy Smithies Moor	3	46	2	7	58
Crowlees CE (VC) J & I School		1		2	3
Diamond Wood Community Academy / Ravensthorpe CE (VC) Junior School	7	18	9	185	219
Earlsheaton Infant School / Bywell CE (VC) Junior School	163	10	5	5	183
Eastborough J I & N School	136	24	1	10	171
Field Lane J I & N School	1	1			2
Fieldhead Primary Academy		16	1	3	20
Flockton CE (VC) First School		1	3		4
Gomersal St Mary's CE(VC) Primary School / Gomersal Primary School		13			13
Grange Moor Primary School	1	1			2
Hanging Heaton CE (VC) J & I School	29	2			31
Hartshead J & I School		1			1
Headlands CE (VC) J I & N School		1			1
Healey J I & N School	11	51	2	16	80
Heaton Avenue, A SHARE Primary Academy	1	3			4
Heckmondwike Primary School	11	55	1	18	85
High Bank J I & N School		2			2
Hightown J I & N School		2		1	3
Hopton Primary School	3	3		1	7
Howard Park Community School		6			6
Littletown J I & N School			1		1
Lydgate J & I School	19	17	1	3	40
Manorfield I & N School / Staincliffe CE (VC) Junior School	10	60		23	93
Meltham Moor Primary School	1				1
Mill Lane Primary School	23	10	1		34
Millbridge, A SHARE Primary Academy	1	15	1	2	19
Moorlands Primary School			1		1
Netherhall St James CE(VC) I & N School / Netherhall Learning Campus Junior School	1				1
New Mill Infant School / New Mill Junior School (Learning Accord MAT)			1		1
Norristhorpe J & I School		14	2		16
Oak CE (VC) Primary School (Junior)/Beaumont Primary Academy				3	3
Old Bank Academy		3	1		4
Orchard Primary Academy	206	16	4	4	230
Overthorpe C of E Academy	6	11	133	2	152
Park Road J I & N School	3	4	1	2	10
Pentland I & N School / Headfield CE (VC) Junior School	3	1	77	13	94
Purlwell I & N School / Hyrstmount Junior School	2	4		3	9
Roberttown CE (VC) J & I School		4	2		6
Savile Town CE(VC) I & N School / Headfield CE (VC) Junior School	6		31	20	57
Scholes J & I School	1				1
Scissett CE (VA ) Academy			1		1
Shaw Cross I & N School / Bywell CE (VC) Junior School	220	20	1	5	246
St John's CE(C) Primary School / Westmoor Primary School KS2	38	115	3	182	338
St Thomas CE (VC) Primary School		1			1
Thornhill J & I School	2	14	150	3	169
Thornhill Lees CE (VC) I & N School / Headfield CE (VC) Junior School	17	15	422	45	499
Warwick Road Primary School	3	10		6	19
Westmoor Primary School	8	113	8	111	240
Whitechapel Church of England Primary School		4	1		5
Windmill Church of England Primary School		12			12
<b>Grand Total</b>	<b>992</b>	<b>948</b>	<b>880</b>	<b>922</b>	<b>3742</b>

Tables E(i) to E(iii) below show how Year 7 places were allocated in this planning area at each of the last three National Offer Days, compared to the number of Year 7 places available at each school and the number of applicants resident in each school's Priority Admission Area (PAA). Blanks in the tables indicate a school does not have a PAA.

**Table E(i)**

The following bulge places were offered above PAN: Manor Croft Academy - 30 places; Thornhill Community Academy – 30 places; and Westborough High School – 20 places.

2023/24	No of Places	Total No of applicants living in PAA	Place allocated				Place allocated		
			Resident in Priority Admission Area allocated	Resident in Planning Area allocated	Resident outside Planning Area allocated	TOTAL No of places allocated	Resident in Priority Admission Area allocated	Resident in Planning Area allocated	Resident outside Planning Area allocated
<b>Dewsbury</b>									
Manor Croft Academy	210	282	155	38	17	210	73.8%	18.1%	8.1%
St John Fisher Catholic Voluntary Academy	198			78	119	197		39.6%	60.4%
Thornhill Community Academy, A SHARE Acader	210	257	192	13	5	210	91.4%	6.2%	2.4%
Westborough High School	200	439	168	15	17	200	84.0%	7.5%	8.5%
	<b>818</b>	<b>978</b>	<b>515</b>	<b>144</b>	<b>158</b>	<b>817</b>	<b>63.0%</b>	<b>17.6%</b>	<b>19.3%</b>

**Table E(ii)**

The following bulge places were offered above PAN: Manor Croft Academy - 30 places; Thornhill Community Academy – 30 places; and Westborough High School – 20 places.

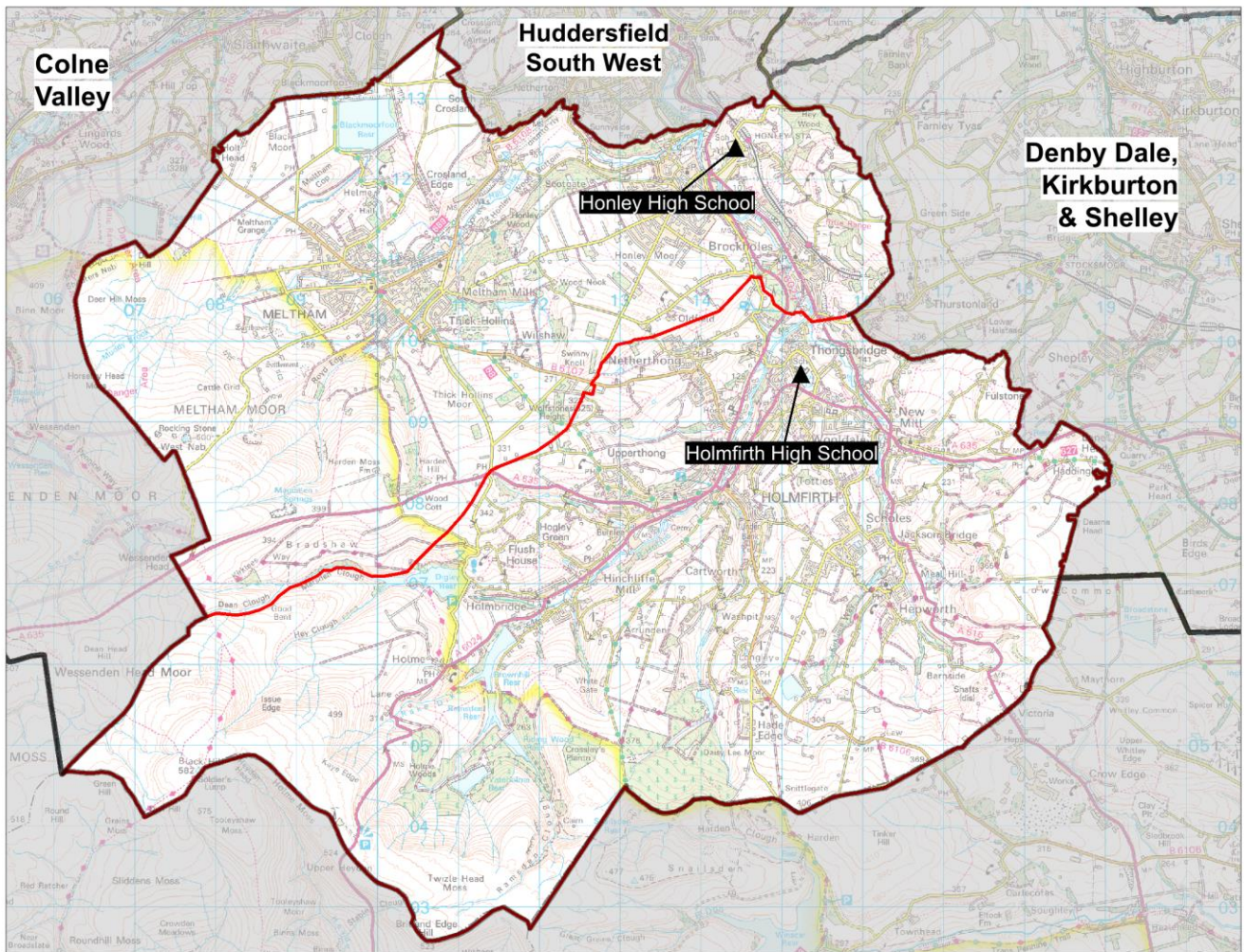
2022/23	No of Places	Total No of applicants living in PAA	Place allocated				Place allocated		
			Resident in Priority Admission Area allocated	Resident in Planning Area allocated	Resident outside Planning Area allocated	TOTAL No of places allocated	Resident in Priority Admission Area allocated	Resident in Planning Area allocated	Resident outside Planning Area allocated
<b>Dewsbury</b>									
Manor Croft Academy	210	288	180	19	11	210	85.7%	9.0%	5.2%
St John Fisher Catholic Voluntary Academy	198			100	98	198		50.5%	49.5%
Thornhill Community Academy, A SHARE Acader	210	261	177	21	10	208	85.1%	10.1%	4.8%
Westborough High School	200	468	158	21	21	200	79.0%	10.5%	10.5%
	<b>818</b>	<b>1017</b>	<b>515</b>	<b>161</b>	<b>140</b>	<b>816</b>	<b>63.1%</b>	<b>19.7%</b>	<b>17.2%</b>

**Table E(iii)**

The following bulge places were offered above PAN: Manor Croft Academy - 30 places; and Thornhill Community Academy – 20 places.

2021/22	No of Places	Total No of applicants living in PAA	Place allocated				Place allocated		
			Resident in Priority Admission Area allocated	Resident in Planning Area allocated	Resident outside Planning Area allocated	TOTAL No of places allocated	Resident in Priority Admission Area allocated	Resident in Planning Area allocated	Resident outside Planning Area allocated
<b>Dewsbury</b>									
Manor Croft Academy	210	288	175	14	21	210	83.3%	6.7%	10.0%
St John Fisher Catholic Voluntary Academy	198			95	103	198		48.0%	52.0%
Thornhill Community Academy	200	234	173	14	5	192	90.1%	7.3%	2.6%
Westborough High School	180	424	149	14	17	180	82.8%	7.8%	9.4%
	<b>788</b>	<b>946</b>							

# Planning Area 29: Holme Valley, Honley & Meltham



Contains Ordnance Survey data  
© Crown Copyright and database right 2023

- ❖ Holmfirth High School
- ❖ Honley High School

**Overview:** Table B on page 224 and the chart on page 222 illustrate that the future year 7 cohort sizes of young people resident in this planning area are expected to continue to decline.

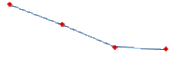
Holmfirth High School and Honley High School are popular schools accommodating pupils from other planning areas where parents express a preference.

**In 2022/23** at national offer day all places at both Honley High School and Holmfirth High School were allocated

**In 2023/24** at national offer day all places at Holmfirth High School were allocated and there was one place unallocated at Honley High School. Additional capacity was added as a bulge year in this planning area, with each of the two schools offered an additional 15 places over PAN. Post-national offer day, but before the initial round of reallocations, a further three bulge places were introduced at each school taking the number of places offered at Holmfirth High School to 282 and at Honley High School to 273. This bulge helped to manage a single year localised population peak which aligned with wider pressures across South Kirklees.

The pattern of pupil distribution illustrates that around 88% of children who live in this planning area attend schools in the area, whilst 4% are securing places in neighbouring planning areas. 22% of pupils attending school here are from neighbouring planning areas.

**For 2024, 2025 and 2026** population data suggest that, from a small peak in 2023, basic need demand for places from those living in the planning area will continue to steadily decline. There are more places available than the numbers of pupils living in in this planning area, therefore, there will remain sufficient places available even when future house building is taken into account. There are two housing development sites in the area where building is underway, totalling approximately 150 dwellings which are expected to be completed in 2024. There is also a development where building has not yet commenced on 137 dwellings. There is no need for additional places.

<b>Place planning summary for Planning Area 29. Holme Valley, Honley &amp; Meltham</b>	
Place planning data for five cohorts of children: Years 7,8,9,10,11 <i>From NHS Oct 2022 and School Census Jan 2023</i> <i>Note numbers in [square brackets] show the <b>average</b> number of children per year group</i>	
<b>2294 [459] children live in this PA (NHS)</b> <ul style="list-style-type: none"> <li>2008 [402] go to schools in this PA</li> <li>88 [18] go to schools in other Kirklees PAs</li> <li>24 [5] go to schools in non-mainstream provisions</li> <li>37 [7] go to schools in other LAs</li> <li>137 [27] are unknown</li> </ul>	<b>2585 [517] children go to school in this PA (Census)</b> <ul style="list-style-type: none"> <li>2008 [402] Live in this PA</li> <li>560 [112] Live in other PAs</li> <li>17 [3] Live outside Kirklees</li> </ul>
Average number of places used per year group Number of Year 7 places available Trend in number of children living in this PA per year group	517 519  <b>Steady decline</b>
Place planning strategy (assuming current patterns of migration, housing occupancy, parental preference etc) <ul style="list-style-type: none"> <li>Based on population data the projected need for places is within the capacity of available places</li> <li>On balance, significantly more children travel IN to schools in the PA from neighbouring PAs than travel out to schools in other PAs</li> <li>No need for additional places</li> </ul>	

## Planning Area 29. Holme Valley, Honley & Meltham

Table C: Where do children living in the Holme Valley, Honley & Meltham planning area go to school?

Years 7-11 (Jan 2023)

School Attended	Brockholes CE (VC) J & I School	Hade Edge J & I School	Hepworth J & I School	Hinchliffe Mill J & I School	Holme J & I School	Holmfirth J I & N School	Honley CE(VC) Junior, Infant & Nursery School	Meltham CE ( VC) Primary School	Meltham Moor Primary School	Netherthong Primary School	New Mill Infant School / New Mill Junior School	Scholes J & I School	Upperthong J & I School	Grand Total
All Saints Catholic College									2					2
Colne Valley High School								7	19				1	27
Heckmondwike Grammar School							1		2					3
Holmfirth High School	68	53	45	89	5	147	33	37	22	105	333	134	162	1233
Honley High School	32	2	2	2		3	277	221	208	6	8	3	11	775
King James's School							3				1		1	5
Kirkburton Middle School								1			1			2
Manor Croft Academy									1			1		2
Moor End Academy									2					2
Netherhall Learning Campus High School							2	1						3
Newsome Academy						2	2	2	3			1	2	12
North Huddersfield Trust School								1						1
Royds Hall, A Share Academy				1				1	1				1	4
Salendine Nook High School Academy							1	1						2
Scissett Middle School											4	1		5
Shelley College, A Share Academy			6				2	1	1		6		1	17
Thornhill Community Academy, A SHARE Academy											1			1
<b>Grand Total</b>	<b>100</b>	<b>55</b>	<b>53</b>	<b>92</b>	<b>5</b>	<b>152</b>	<b>321</b>	<b>269</b>	<b>262</b>	<b>114</b>	<b>354</b>	<b>140</b>	<b>179</b>	<b>2096</b>



**Planning Area 29. Holme Valley, Honley & Meltham**  
**Table D: Where do children attending school in Holme Valley, Honley & Meltham live?**

Years 7-11 (Jan 2023)

School Attended

PAA of Residence	School Attended		
	Holmfirth High School	Honley High School	Grand Total
All Hallows' CE (VA) Primary School / Hill View Academy KS2		10	10
Berry Brow I & N School / Newsome Junior School	4	63	67
Birdsedge First School (The Mast Academy Trust)	1		1
Birkby I & N School / Birkby Junior School	2	7	9
Brockholes CE (VC) J & I School	68	32	100
Christ Church CE Academy		2	2
Crow Lane Primary and Foundation Stage School		2	2
Dalton Junior Infant and Nursery School		10	10
Denby Dale First and Nursery School		1	1
Emley First School		2	2
Farnley Tyas CE (VC) First School	4	2	6
Golcar J I & N School	1	3	4
Hade Edge J & I School	53	2	55
Hepworth J & I School	45	2	47
Highburton CE (VC) First School		2	2
Hill View Academy	1	7	8
Hillside Primary School	2	51	53
Hinchliffe Mill J & I School	89	2	91
Holme J & I School	5		5
Holmfirth J I & N School	147	3	150
Honley CE(VC) Junior, Infant & Nursery School	33	277	310
Kaye's Academy School	2		2
Kirkburton CE (VA) First School	3	1	4
Kirkheaton Primary School		4	4
Lepton CofE Primary Academy		1	1
Lindley Church of England Infant School / Lindley Junior School	1	3	4
Linthwaite Clough J I & Early Years Unit	1	11	12
Lowerhouses CE (VC) Junior Infant and Early Years School	2	3	5
Luck Lane, A SHARE Primary Academy		1	1
Marsden I & N School / Marsden Junior School	2	9	11
Meltham CE (VC) Primary School	37	221	258
Meltham Moor Primary School	22	208	230
Millbridge, A SHARE Primary Academy		1	1
Moldgreen Community Primary School		5	5
Moorlands Primary School	2	1	3
Mount Pleasant Primary School		20	20
Netherhall St James (VC) C of E Infant and Nursery School / Netherhall Learning Campus Junior School		5	5
Netherthong Primary School	105	6	111
Netherton I & N School / South Crosland CE (VA) Junior School	8	156	164
New Mill Infant School / New Mill Junior School (Learning Accord MAT)	333	8	341
Nields J I & N School	2	3	5
Oak CE (VC) Primary School (Junior)/Beaumont Primary Academy	7	73	80
Old Bank Academy	1		1
Paddock J I & N School		2	2
Reinwood I & N School / Reinwood Community Junior School	1	1	2
Roberttown CE (VC) J & I School		1	1
Rowley Lane J I & N School	1		1
Scholes J & I School	134	3	137
Shelley First School	5	1	6
Shepley First School	1		1
Slaithwaite CE (VC) J & I School		2	2
Spring Grove J I & N School	1	6	7
St Thomas CE (VC) Primary School		4	4
Thurstonland Endowed (VC) First School	18	3	21
Upperthong J & I School	162	11	173
Wilberlee J & I School		2	2
Woodside Green, A SHARE Primary Academy		6	6
<b>Grand Total</b>	<b>1306</b>	<b>1262</b>	<b>2568</b>

Tables E(i) to E(iii) below show how Year 7 places were allocated in this planning area at each of the last three National Offer Days, compared to the number of Year 7 places available at each school and the number of applicants resident in each school's Priority Admission Area (PAA). Blanks in the tables indicate a school does not have a PAA.

**Table E(i)**

Holmfirth High School and Honley High School each offered an additional 15 bulge places over PAN.

2023/24	No of Places	Total No of applicants living in PAA	Place allocated				Place allocated		
			Resident in Priority Admission Area allocated	Resident in Planning Area allocated	Resident outside Planning Area allocated	TOTAL No of places allocated	Resident in Priority Admission Area allocated	Resident in Planning Area allocated	Resident outside Planning Area allocated
<b>Holme Valley, Honley &amp; Meltham</b>									
Holmfirth High School	279	253	239	34	6	279	85.7%	12.2%	2.2%
Honley High School	270	195	147	10	112	269	54.6%	3.7%	41.6%
	<b>549</b>	<b>448</b>	<b>386</b>	<b>44</b>	<b>118</b>	<b>548</b>	<b>70.4%</b>	<b>16.4%</b>	<b>43.9%</b>

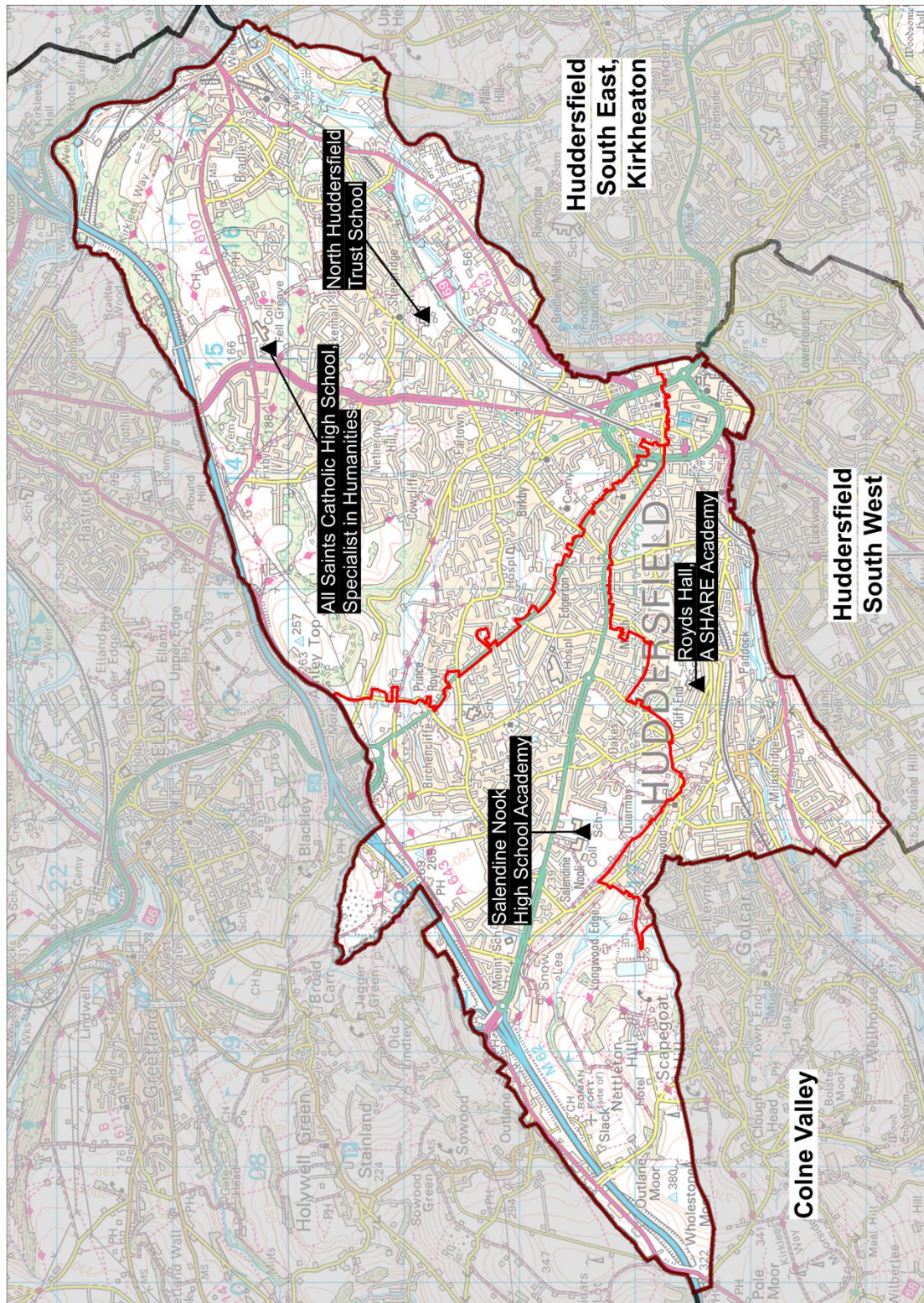
**Table E(ii)**

2022/23	No of Places	Total No of applicants living in PAA	Place allocated				Place allocated		
			Resident in Priority Admission Area allocated	Resident in Planning Area allocated	Resident outside Planning Area allocated	TOTAL No of places allocated	Resident in Priority Admission Area allocated	Resident in Planning Area allocated	Resident outside Planning Area allocated
<b>Holme Valley, Honley &amp; Meltham</b>									
Holmfirth High School	264	222	217	37	10	264	82.2%	14.0%	3.8%
Honley High School	255	188	142	2	111	255	55.7%	0.8%	43.5%
	<b>519</b>	<b>410</b>	<b>359</b>	<b>39</b>	<b>121</b>	<b>519</b>	<b>69.2%</b>	<b>15.3%</b>	<b>47.5%</b>

**Table E(iii)**

2021/22	No of Places	Total No of applicants living in PAA	Place allocated				Place allocated		
			Resident in Priority Admission Area allocated	Resident in Planning Area allocated	Resident outside Planning Area allocated	TOTAL No of places allocated	Resident in Priority Admission Area allocated	Resident in Planning Area allocated	Resident outside Planning Area allocated
<b>Holme Valley, Honley &amp; Meltham</b>									
Holmfirth High School	264	210	203	27	22	252	80.6%	10.7%	8.7%
Honley High School	255	188	151	4	100	255	59.2%	1.6%	39.2%
	<b>519</b>	<b>398</b>							

# Planning Area 30: Huddersfield North & West



Contains Ordnance Survey data

© Crown Copyright and database right 2023

- ❖ All Saints Catholic College, Specialist in Humanities
- ❖ North Huddersfield Trust School
- ❖ Royds Hall, A SHARE Academy
- ❖ Salendine Nook High School Academy

**Overview:** Table B on page 224 and the chart on page 222 illustrate that the future year 7 cohort size of young people resident in this planning area is broadly static, albeit with some significant fluctuations.

Located in North Huddersfield, All Saints Catholic College has a pupil population residing across South Kirklees and beyond into Calderdale. North Huddersfield Trust School is also located in North Huddersfield. This school has experienced increasing pupil numbers. Royds Hall, A SHARE Academy is currently an all-through 4-16 school located to the south of the planning area. However, in October 2023, the DfE Regional Director (formerly the Regional Schools Commissioner) approved a proposal by SHARE Multi-Academy Trust to de-amalgamate to create two separate schools: Luck Lane (primary provision) and Royds Hall (secondary provision). This change, which is not expected to take place until after National Offer Day 2024, will mean pupils at Luck Lane will no longer automatically be allocated a place at Royds Hall, although they will still be of high priority for a place according to its oversubscription criteria. Salendine Nook High School is located to the north-west of this planning area.

**In 2022/23** at national offer day all Y7 places were allocated at all schools. 30 additional places were created as a bulge at North Huddersfield Trust School PAN 180 +30 = 210.

**In 2023/24** at national offer day all Y7 places were allocated at all schools. Once again 30 additional places were created as a bulge at North Huddersfield Trust School PAN 180 +30 = 210. Salendine Nook High School also admitted over PAN by 10 from 275 to 285. The pattern of pupil distribution illustrates that around 62% of children who live in this planning area attend schools in the area. 10% are securing places in neighbouring planning areas, while 17% attend schools in other LAs, largely Calderdale. 11% of pupils who attend schools here are from neighbouring planning areas, with a smaller percentage of around 4% from other LAs.

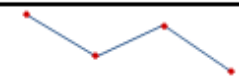
**For 2024, 2025 and 2026** population data suggest the population peak experienced for the last four years will now start to become broadly static, albeit with some significant fluctuations. These include a notable dip in 2024 and, beyond this period, a peak in 2027. Despite these fluctuations, demand is expected to remain high. An important factor affecting future demand for places in this planning area will be changing cross-border movement to Calderdale.

Due to the expected high demand for places and the impact of housing development in Huddersfield North and West, a need for a modest number of additional places on a more permanent basis was identified in previous place planning documents. This has led to a strategic decision by Kirklees Cabinet to invest capital at North Huddersfield Trust School to support a permanent increase of 30 places per year group over time.

There are four housing development sites in the area where building is underway. One site with around 100 dwellings is expected to be completed in 2023. The remaining three sites totalling approximately 575 dwellings are expected to take around three years to complete. There is also a strategic development site in the Kirklees Local Plan in this planning area.

Despite some signs of population becoming broadly static in this planning area, consideration needs to be given to the combined impact that significant house-building and potential changes in cross-border movement to Calderdale may have on generating further demand for

secondary places. Therefore, in addition to the permanent places planned at North Huddersfield Trust School, the need to introduce more secondary school places in the future cannot be ruled out. For this reason, this planning area will remain under constant review.

<b>Place planning summary for Planning Area 30. Huddersfield North &amp; West</b>	
Place planning data for five cohorts of children: Years 7,8,9,10,11 From NHS Oct 2022 and School Census Jan 2023 Note numbers in [square brackets] show the <b>average</b> number of children per year group	
<b>5594 [1119] children live in this PA (NHS)</b> <ul style="list-style-type: none"> <li>3473 [695] go to schools in this PA</li> <li>560 [112] go to schools in other Kirklees PAs</li> <li>73 [15] go to schools in non-mainstream provisions</li> <li>943 [189] go to schools in other LAs</li> <li>545 [109] are unknown</li> </ul>	<b>4077 [815] children go to school in this PA (Census)</b> <ul style="list-style-type: none"> <li>3473 [695] Live in this PA</li> <li>449 [90] Live in other PAs</li> <li>155 [31] Live outside Kirklees</li> </ul>
Average number of places used per year group Number of Year 7 places available Trend in number of children living in this PA per year group	815 807  <p><b>Broadly static with fluctuations</b></p>
<b>Place planning strategy (assuming current patterns of migration, housing occupancy, parental preference etc)</b> <ul style="list-style-type: none"> <li>Based on population data the projected need for places is above the capacity of available places</li> <li>On balance, more children travel OUT to schools in other PAs than travel in to schools in this PA With a large number also travelling OUT to schools in neighbouring LAs</li> <li>In light of future housing developments, including a strategic development site, and alongside cross-border movement, the need to introduce more secondary school places in the future cannot be ruled out. For this reason, this planning area will remain under constant review.</li> </ul>	

## Planning Area 30. Huddersfield North & West

Table C: Where do children living in the Huddersfield North & West planning area go to school?

Years 7-11 (Jan 2023)

School Attended	Ashbrow School	Birkby I & N School / Birkby Junior School	Christ Church CE Academy	Crow Lane Primary and Foundation Stage School	Fixby J & I School	Lindley Church of England Infant School / Lindley Junior School	Moorlands Primary School	Paddock J I & N School	Reinwood I & N School / Reinwood Community Junior School	Spring Grove J I & N School	St Thomas CE (VC) Primary School	Woodside Green, A SHARE Primary Academy	Grand Total
All Saints Catholic College	101	130	109	10	22	15	9	9	21	5	154		585
Batley Girls High School	1	1	2							1			5
Castle Hall Academy	3	4	4								15		26
Colne Valley High School		2	1	38		2	6	14	3	4	1	111	182
Heckmondwike Grammar School	5	10	1	1	6	4	1			3	6		37
Holmfirth High School		2				1	2		1	1			7
Honley High School		7	2	2		3	1	2	1	6	4	6	34
King James's School		7				2	1			1	5		16
Kirkburton Middle School										1	2		3
Moor End Academy		16	6	2				4	4	9	4	10	55
Netherhall Learning Campus High School	3	13	2	1						3	40		62
Newsome Academy	1	36	3	3	1	3	4	6	3	17	6	7	90
North Huddersfield Trust School	81	517	147	2	2	1	2	3	2	5	127	1	890
Royds Hall, A Share Academy	1	65	5	65		32	10	259	98	72	7	73	687
Salendine Nook High School Academy	3	109		21	6	444	340	88	248	44	4	4	1311
Scissett Middle School	1	1		1									3
Shelley College, A Share Academy	1	2	1								1		5
St John Fisher Catholic Voluntary Academy											1		1
The Mirfield Free Grammar		1	1								15		17
Thornhill Community Academy, A SHARE Academy		2					1						3
Upper Batley High School		1	1										2
Westborough High School	3		3										6
Whitcliffe Mount, A SHARE Academy		1					1				4		6
<b>Grand Total</b>	<b>204</b>	<b>927</b>	<b>288</b>	<b>146</b>	<b>37</b>	<b>507</b>	<b>378</b>	<b>385</b>	<b>381</b>	<b>172</b>	<b>396</b>	<b>212</b>	<b>4033</b>

## Planning Area 30. Huddersfield North & West

**Table D: Where do children attending school in Huddersfield North & West live?**

Years 7-11 (Jan 2023)

School Attended

PAA of Residence	All Saints Catholic College	North Huddersfield Trust School	Royds Hall, A Share Academy	Salendine Nook High School Academy	Grand Total
All Hallows' CE (VA) Primary School / Hill View Academy KS2	8	1	1	5	15
Ashbrow School	101	81	1	3	186
Berry Brow I & N School / Newsome Junior School	6	3	3	4	16
Birdsedge First School (The Mast Academy Trust)			1		1
Birkby I & N School / Birkby Junior School	130	517	65	109	821
Carlinghow Academy	2				2
Christ Church CE Academy	109	147	5		261
Co-op Academy Smithies Moor	1				1
Crow Lane Primary and Foundation Stage School	10	2	65	21	98
Crowlees CE (VC) J & I School	1				1
Dalton Junior Infant and Nursery School	42	1	1		44
Earlsheaton Infant School / Bywell CE (VC) Junior School		1			1
Field Lane J I & N School	1				1
Fixby J & I School	22	2		6	30
Golcar J I & N School	4		18	11	33
Gomersal St Mary's CE(VC) Primary School / Gomersal Primary School			1		1
Headlands CE (VC) J I & N School			1		1
Healey J I & N School			1		1
Highburton CE (VC) First School				1	1
Hill View Academy	11		1	1	13
Hillside Primary School	10	3	6	1	20
Hinchliffe Mill J & I School			1		1
Honley CE(VC) Junior, Infant & Nursery School				1	1
Hopton Primary School	1				1
Kirkheaton Primary School	6	1	1		8
Lepton CofE Primary Academy	5				5
Lindley Church of England Infant School / Lindley Junior School	15	1	32	444	492
Linthwaite Clough J I & Early Years Unit	3		4	4	11
Lowerhouses CE (VC) Junior Infant and Early Years School	6	5	2	3	16
Luck Lane, A SHARE Primary Academy	1	1	54	21	77
Marsden I & N School / Marsden Junior School		1		1	2
Meltham CE (VC) Primary School			1	1	2
Meltham Moor Primary School	2	1	1		4
Moldgreen Community Primary School	8		2	3	13
Moorlands Primary School	9	2	10	340	361
Mount Pleasant Primary School	4		7	3	14
Netherhall St James CE(VC) I & N School / Netherhall Learning Campus Junior School	31	9	6	2	48
Nields J I & N School	1				1
Oak CE (VC) Primary School (Junior)/Beaumont Primary Academy	17	2	46	10	75
Old Bank Academy			1		1
Overthorpe C of E Academy	1				1
Paddock J I & N School	9	3	259	88	359
Reinwood I & N School / Reinwood Community Junior School	21	2	98	248	369
Scapegoat Hill J & I School				5	5
Scholes Village Primary School	1				1
Slaithwaite CE (VC) J & I School	2		2		4
Spring Grove J I & N School	5	5	72	44	126
St Thomas CE (VC) Primary School	154	127	7	4	292
Thornhill Lees CE (VC) I & N School / Headfield CE (VC) Junior School	2				2
Upperthong J & I School			1		1
Wellhouse J & I School	1		1	1	3
Woodside Green, A SHARE Primary Academy		1	73	4	78
<b>Grand Total</b>	<b>763</b>	<b>919</b>	<b>851</b>	<b>1389</b>	<b>3922</b>

Tables E(i) to E(iii) below show how Year 7 places were allocated in this planning area at each of the last three National Offer Days, compared to the number of Year 7 places available at each school and the number of applicants resident in each school's Priority Admission Area (PAA). Blanks in the tables indicate a school does not have a PAA.

**Table E(i)**

North Huddersfield Trust School offered an additional 30 bulge places over PAN and Salendine Nook High School offered an additional 10 bulge places over PAN.

2023/24	No of Places	Total No of applicants living in PAA	Place allocated				Place allocated		
			Resident in Priority Admission Area allocated	Resident in Planning Area allocated	Resident outside Planning Area allocated	TOTAL No of places allocated	Resident in Priority Admission Area allocated	Resident in Planning Area allocated	Resident outside Planning Area allocated
<b>Huddersfield North &amp; West</b>									
All Saints Catholic College	180			111	69	180		61.7%	38.3%
North Huddersfield Trust School	210	480	200	2	8	210	95.2%	1.0%	3.8%
Royds Hall, A SHARE Academy	172	234	115	27	30	172	66.9%	15.7%	17.4%
Salendine Nook High School Academy	285	320	252	28	5	285	88.4%	9.8%	1.8%
	<b>847</b>	<b>1034</b>	<b>567</b>	<b>168</b>	<b>112</b>	<b>847</b>	<b>66.9%</b>	<b>19.8%</b>	<b>13.2%</b>

**Table E(ii)**

North Huddersfield Trust School offered an additional 30 bulge places over PAN.

2022/23	No of Places	Total No of applicants living in PAA	Place allocated				Place allocated		
			Resident in Priority Admission Area allocated	Resident in Planning Area allocated	Resident outside Planning Area allocated	TOTAL No of places allocated	Resident in Priority Admission Area allocated	Resident in Planning Area allocated	Resident outside Planning Area allocated
<b>Huddersfield North &amp; West</b>									
All Saints Catholic College	180			117	63	180		65.0%	35.0%
North Huddersfield Trust School	210	487	197	2	11	210	93.8%	1.0%	5.2%
Royds Hall, A SHARE Academy	172	222	110	35	27	172	64.0%	20.3%	15.7%
Salendine Nook High School Academy	275	299	211	52	12	275	76.7%	18.9%	4.4%
	<b>837</b>	<b>1008</b>	<b>518</b>	<b>206</b>	<b>113</b>	<b>837</b>	<b>61.9%</b>	<b>24.6%</b>	<b>13.5%</b>

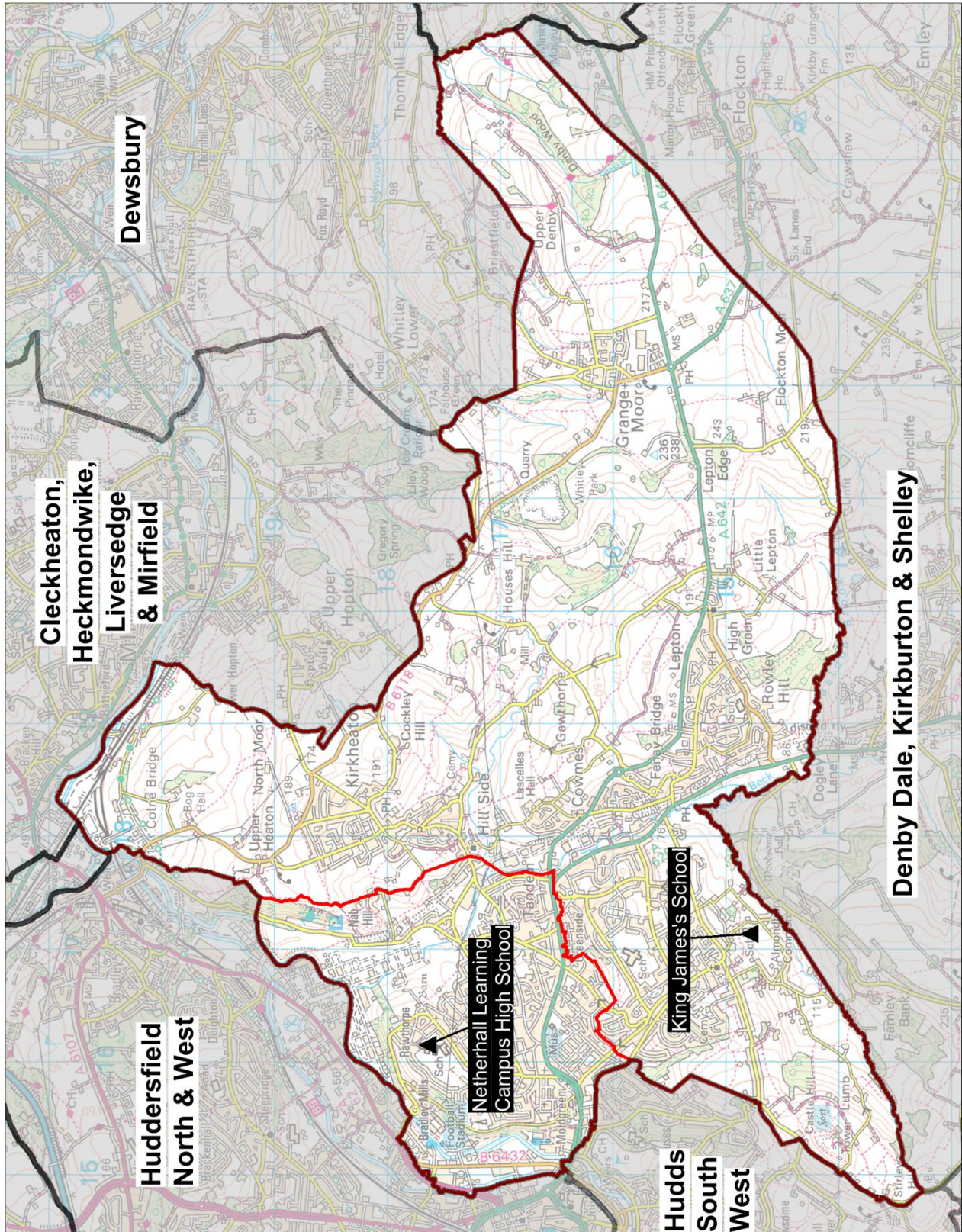
**Table E(iii)**

North Huddersfield Trust School offered an additional 30 bulge places over PAN.

2021/22	No of Places	Total No of applicants living in PAA	Place allocated				Place allocated		
			Resident in Priority Admission Area allocated	Resident in Planning Area allocated	Resident outside Planning Area allocated	TOTAL No of places allocated	Resident in Priority Admission Area allocated	Resident in Planning Area allocated	Resident outside Planning Area allocated
<b>Huddersfield North &amp; West</b>									
All Saints Catholic College	180			113	67	180		62.8%	37.2%
North Huddersfield Trust School	210	503	202	1	7	210	96.2%	0.5%	3.3%
Royds Hall Community School	172	224	128	19	25	172	74.4%	11.0%	14.5%
Salendine Nook High School Academy	275	310	240	27	8	275	87.3%	9.8%	2.9%
	<b>837</b>	<b>1037</b>							



# Planning Area 31: Huddersfield South & East and Kirkheaton



Contains Ordnance Survey data  
 © Crown Copyright and database right 2023

- ❖ King James's School
- ❖ Netherhall Learning Campus High School

**Overview:** Table B on page 224 and the chart on page 222 illustrate that the future year 7 cohort size of young people resident in this planning area will continue to decline slightly overall, albeit with some fluctuations.

Netherhall Learning Campus High School is part of an all-through federation with Netherhall St James C of E (VC) Infant and Nursery School and Netherhall Learning Campus Junior School. The school also incorporates the Kirklees Creative and Media Studio School with a 14-19 offer on site. King James's School is located in the southern part of the planning area serving Lepton, Kirkheaton, Grange Moor and Almondbury. The secondary phase of Almondbury Community School was removed from 1 September 2020 following a statutory process. Since this time, King James's School has been admitting over PAN to 210. Its PAN permanently increased from 186 to 210 from 2023/24 after a new block of classrooms was added.

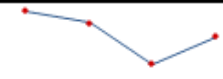
**In 2022/23** at national offer day all Y7 places were allocated at both schools. King James's School continued to admit over PAN to 210 and Netherhall Learning Campus High School admitted 145 pupils.

**In 2023/24** at national offer day all Y7 places were allocated at both schools. Additional capacity was added as a bulge year in this planning area, with King James's School offering five places above its PAN of 210 to 215 and Netherhall Learning Campus High School offering 15 places above its PAN of 145. Post-national offer day, but before the initial round of reallocations, a further five bulge places were introduced at Netherhall Learning Campus High School taking the number of places offered to 165.

The pattern of pupil distribution illustrates that around 66% of children who live in this planning area attend schools in the area, whilst 22% are securing places in neighbouring planning areas. 7% of pupils who are attending schools here are from neighbouring planning areas.

**For 2024, 2025 and 2026** population data suggest a slightly declining trend with a more significant dip in 2025 only. There are established trends of pupils resident in this planning area accessing a school place in surrounding planning areas.

Longer term, the declining population trend may be lessened by the impact of future Local Plan housing developments in this and neighbouring planning areas. There is no need for additional places.

Place planning summary for Planning Area 31. Huddersfield South & East, Kirkheaton	
Place planning data for five cohorts of children: Years 7,8,9,10,11 From NHS Oct 2022 and School Census Jan 2023 Note numbers in [square brackets] show the <b>average</b> number of children per year group	
<b>2463 [493] children live in this PA (NHS)</b> <ul style="list-style-type: none"> <li>1623 [325] go to schools in this PA</li> <li>535 [107] go to schools in other Kirklees PAs</li> <li>56 [11] go to schools in non-mainstream provisions</li> <li>38 [8] go to schools in other LAs</li> <li>211 [42] are unknown</li> </ul>	<b>1756 [351] children go to school in this PA (Census)</b> <ul style="list-style-type: none"> <li>1623 [325] Live in this PA</li> <li>126 [25] Live in other PAs</li> <li>7 [1] Live outside Kirklees</li> </ul>
Average number of places used per year group Number of Year 7 places available Trend in number of children living in this PA per year group	351 355  <p><b>Slight decline with fluctuations</b></p>
Place planning strategy (assuming current patterns of migration, housing occupancy, parental preference etc) <ul style="list-style-type: none"> <li>Based on population data the projected need for places is within the capacity of available places</li> <li>On balance, significantly more children travel OUT to schools in other PAs than travel in to schools in this PA</li> <li>No need for additional places</li> </ul>	

## Planning Area 31. Huddersfield South & East, Kirkheaton

Table C: Where do children living in the Huddersfield South & East, Kirkheaton planning area go to school?

Years 7-11 (Jan 2023)

School Attended	All Hallows' CE (VA) Primary School / Hill View Academy KS2	Dalton Junior Infant and Nursery School	Grange Moor Primary School	Hill View Academy	Kirkheaton Primary School	Lepton CofE Primary Academy	Lowerhouses CE (VC) Junior Infant and Early Years School	Moldgreen Community Primary School	Netherhall St James CE(VC) I&N School / Netherhall Learning Campus Junior School	Rowley Lane J I & N School	Grand Total
All Saints Catholic College	8	42		11	6	5	6	8	31		117
Castle Hall Academy		3		1	4	2	2		2		14
Colne Valley High School	3	2					1				6
Heckmondwike Grammar School	1	2	2	1	2	3			3	1	15
Holmfirth High School				1			2			1	4
Honley High School	10	10		7	4	1	3	5	5		45
King James's School	207	52	46	147	178	208	28	18	13	84	981
Kirkburton Middle School	6	5	4	9	1	12	1	1	4	5	48
Manor Croft Academy			1						1		2
Moor End Academy				2			2		7		11
Netherhall Learning Campus High School	14	140		37	12	2	16	90	327	4	642
Newsome Academy	9	8		17		1	86	14	13		148
North Huddersfield Trust School	1	1			1		5		9		17
Royds Hall, A Share Academy	1	1		1	1		2	2	6		14
Salendine Nook High School Academy	5			1			3	3	2		14
Scissett Middle School			1	1							2
Shelley College, A Share Academy	10	11	4	6	2	16	4		5	8	66
St John Fisher Catholic Voluntary Academy			1								1
The Mirfield Free Grammar		1	1	2	4				1	1	10
Upper Batley High School								1			1
<b>Grand Total</b>	<b>275</b>	<b>278</b>	<b>60</b>	<b>244</b>	<b>215</b>	<b>250</b>	<b>161</b>	<b>142</b>	<b>429</b>	<b>104</b>	<b>2158</b>

**Planning Area 31. Huddersfield South & East, Kirkheaton**  
**Table D: Where do children attending school in Huddersfield South & East, Kirkheaton live?**

Years 7-11 (Jan 2023)

School Attended

PAA of Residence	King James's School	Netherhall Learning Campus High School	Grand Total
All Hallows' CE (VA) Primary School / Hill View Academy KS2	207	14	221
Ashbrow School		3	3
Berry Brow I & N School / Newsome Junior School	3		3
Birkby I & N School / Birkby Junior School	7	13	20
Christ Church CE Academy		2	2
Crossley Fields J & I School	1		1
Crow Lane Primary and Foundation Stage School		1	1
Dalton Junior Infant and Nursery School	52	140	192
Denby Dale First and Nursery School	1		1
Flockton CE (VC) First School	1		1
Grange Moor Primary School	46		46
Highburton CE (VC) First School	3		3
Hill View Academy	147	37	184
Hillside Primary School	1	4	5
Honley CE(VC) Junior, Infant & Nursery School	3	2	5
Kaye's Academy School	2		2
Kirkburton CE (VA) First School	1		1
Kirkheaton Primary School	178	12	190
Lepton CoFE Primary Academy	208	2	210
Lindley Church of England Infant School / Lindley Junior School	2		2
Lowerhouses CE (VC) Junior Infant and Early Years School	28	16	44
Luck Lane, A SHARE Primary Academy		2	2
Manorfield I & N School / Staincliffe CE (VC) Junior School		1	1
Marsden I & N School / Marsden Junior School		1	1
Meltham Moor Primary School		1	1
Moldgreen Community Primary School	18	90	108
Moorlands Primary School	1		1
Mount Pleasant Primary School	1	1	2
Netherhall St James CE(VC) I & N School / Netherhall Learning Campus Junior School	13	327	340
New Mill Infant School / New Mill Junior School (Learning Accord MAT)	1		1
Oak CE (VC) Primary School (Junior)/Beaumont Primary Academy	3	4	7
Old Bank Academy	2		2
Rowley Lane J I & N School	84	4	88
Scissett CE (VA) Academy	1		1
Shelley First School	3		3
Skelmanthorpe Academy School	1		1
Slaithwaite CE (VC) J & I School		1	1
Spring Grove J I & N School	1	3	4
St Thomas CE (VC) Primary School	5	40	45
Thornhill J & I School	1		1
Uppertong J & I School	1		1
Whitechapel Church of England Primary School		1	1
<b>Grand Total</b>	<b>1027</b>	<b>722</b>	<b>1749</b>

Tables E(i) to E(iii) below show how Year 7 places were allocated in this planning area at each of the last three National Offer Days, compared to the number of Year 7 places available at each school and the number of applicants resident in each school's Priority Admission Area (PAA). Blanks in the tables indicate a school does not have a PAA.

**Table E(i)**

King James's School offered an additional 5 bulge places over PAN and Netherhall Learning Campus High School offered an additional 15 places over PAN.

2023/24	No of Places	Total No of applicants living in PAA	Place allocated				Place allocated		
			Resident in Priority Admission Area allocated	Resident in Planning Area allocated	Resident outside Planning Area allocated	TOTAL No of places allocated	Resident in Priority Admission Area allocated	Resident in Planning Area allocated	Resident outside Planning Area allocated
<b>Huddersfield South &amp; East and Kirkheaton</b>									
King James's School	215	194	160	37	18	215	74.4%	17.2%	8.4%
Netherhall Learning Campus High School	160	230	143	3	14	160	89.4%	1.9%	8.8%
	<b>375</b>	<b>424</b>	<b>310</b>	<b>23</b>	<b>22</b>	<b>355</b>	<b>87.3%</b>	<b>6.5%</b>	<b>6.2%</b>

**Table E(ii)**

King James's offered an additional 24 places over PAN before its PAN permanently became 210 from 2023/24.

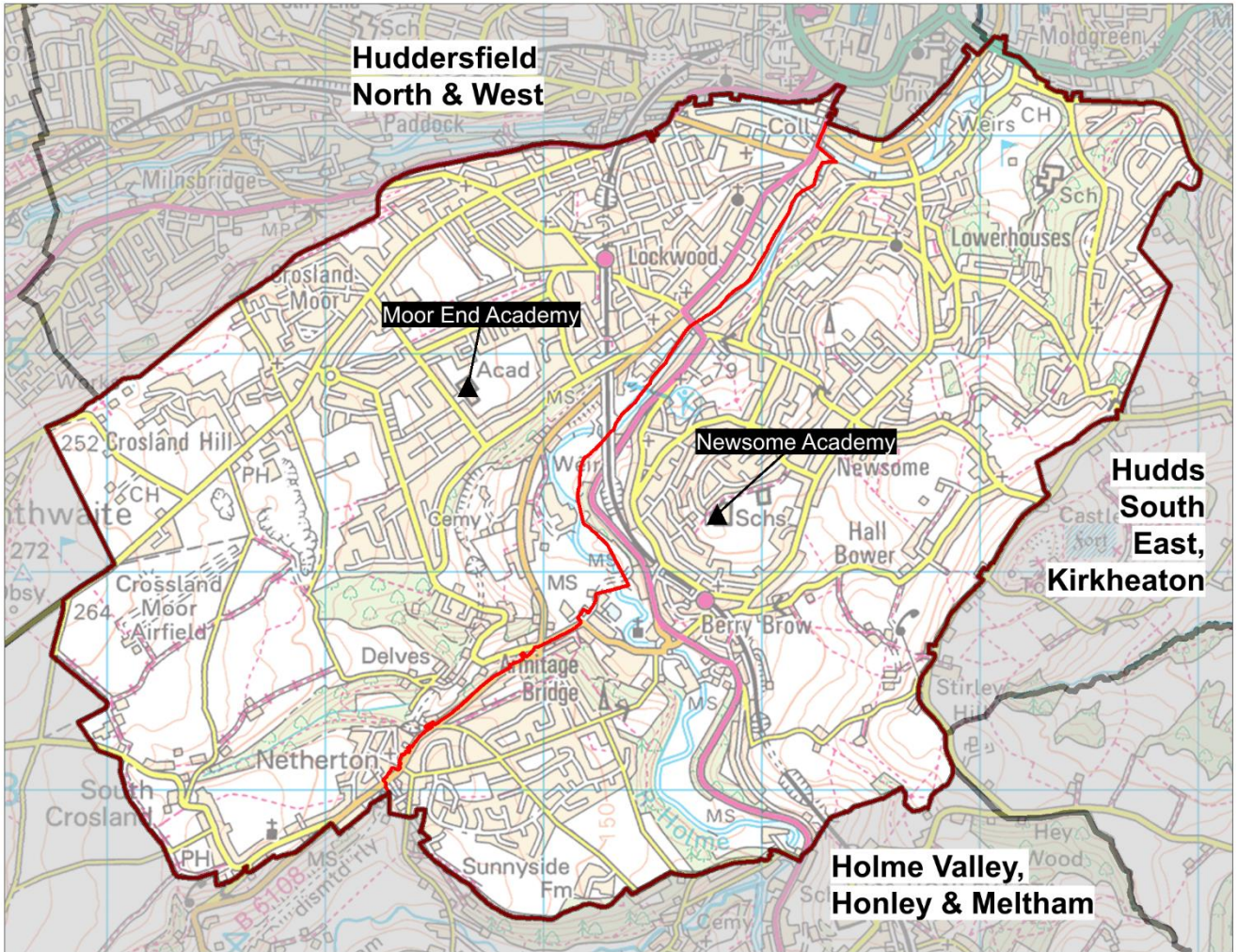
2022/23	No of Places	Total No of applicants living in PAA	Place allocated				Place allocated		
			Resident in Priority Admission Area allocated	Resident in Planning Area allocated	Resident outside Planning Area allocated	TOTAL No of places allocated	Resident in Priority Admission Area allocated	Resident in Planning Area allocated	Resident outside Planning Area allocated
<b>Huddersfield South &amp; East and Kirkheaton</b>									
King James's School	210	222	181	17	12	210	86.2%	8.1%	5.7%
Netherhall Learning Campus High School	145	191	129	6	10	145	89.0%	4.1%	6.9%
	<b>355</b>	<b>413</b>	<b>310</b>	<b>23</b>	<b>22</b>	<b>355</b>	<b>87.3%</b>	<b>6.5%</b>	<b>6.2%</b>

**Table E(iii)**

King James's offered an additional 24 places over PAN.

2021/22	No of Places	Total No of applicants living in PAA	Place allocated				Place allocated		
			Resident in Priority Admission Area allocated	Resident in Planning Area allocated	Resident outside Planning Area allocated	TOTAL No of places allocated	Resident in Priority Admission Area allocated	Resident in Planning Area allocated	Resident outside Planning Area allocated
<b>Huddersfield South &amp; East and Kirkheaton</b>									
King James's School	210	243	209	1		210	99.5%	0.5%	0.0%
Netherhall Learning Campus High School	145	188	139	2	4	145	95.9%	1.4%	2.8%
	<b>355</b>	<b>431</b>							

# Planning Area 32: Huddersfield South West



Contains Ordnance Survey data  
© Crown Copyright and database right 2023

- ❖ Moor End Academy
- ❖ Newsome Academy

**Overview:** Table B on page 224 and the chart on page 222 illustrate that the future year 7 cohort size of young people resident in this planning area is expected to be broadly static, with some fluctuations.

Newsome Academy is situated to the east of the planning area and Moor End Academy to the west of the planning area.

**In 2022/23** at national offer day all places were allocated at Moor End Academy and Newsome Academy had a number of vacancies.

**In 2023/24** additional capacity as a bulge year was added in this planning area, with an additional 10 places at Newsome Academy over its PAN of 180. At national offer day all places were allocated at Moor End Academy and Newsome Academy had a very small number of vacancies. Post-national offer day, but before the initial round of reallocations, a further five bulge places over a PAN of 210 were introduced at Moor End Academy taking the number of places offered to 215.

The pattern of pupil distribution illustrates that around 62% of children who live in this planning area attend schools in the area, whilst 27% are securing places in neighbouring planning areas. 21% of pupils attending school here are from neighbouring planning areas.

**For 2024, 2025 and 2026** NHS population data continue to suggest a broadly static position.

There are two housing sites in this area where development has commenced. One site providing 200 dwellings is expected to be complete in 2024, with a second site providing 250 dwellings expected to be in around three years. There is a further large housing development site providing 770 dwellings where building has not yet commenced, along with another significant housing development site proposed in the Local Plan, both of which could impact this planning area and require additional places in the future.



## Place planning summary for Planning Area 32. Huddersfield South West

Place planning data for five cohorts of children: Years 7,8,9,10,11

From NHS Oct 2022 and School Census Jan 2023

Note numbers in [square brackets] show the **average** number of children per year group

### 2203 [441] children live in this PA (NHS)

- 1360 [272] go to schools in this PA
- 584 [117] go to schools in other Kirklees PAs
- 39 [8] go to schools in non-mainstream provisions
- 38 [8] go to schools in other LAs
- 182 [36] are unknown

### 1741 [348] children go to school in this PA (Census)

- 1360 [272] Live in this PA
- 372 [74] Live in other PAs
- 9 [2] Live outside Kirklees

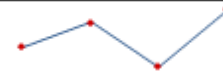
Average number of places used per year group

Number of Year 7 places available

Trend in number of children living in this PA per year group

348

390



**Broadly static with fluctuations**

Place planning strategy (assuming current patterns of migration, housing occupancy, parental preference etc)

- Based on population data the projected need for places is below the capacity of available places
- On balance, significantly more children travel OUT to schools in other PAs than travel in to schools in this PA
- In light of the potential impact of future housing development, which could lead to a requirement for additional places in the future, this planning area will be kept under review.

## Planning Area 32. Huddersfield South West

Table C: Where do children living in the Huddersfield South West planning

Years 7-11 (Jan 2023)

School Attended	Berry Brow I & N School / Newsome Junior School	Hillside Primary School	Mount Pleasant Primary School	Netherton I & N School / South Crosland CE (VA) Junior School	Oak CE (VC) Primary School (Junior)/Beaumont Primary Academy	Grand Total
All Saints Catholic College	6	10	4		17	37
Colne Valley High School		1	1	1	40	43
Heckmondwike Grammar School	3	1	1		4	9
Holmfirth High School	4	2		8	7	21
Honley High School	63	51	20	156	73	363
King James's School	3	1	1		3	8
Kirkburton Middle School		1				1
Moor End Academy	6	11	236		690	943
Netherhall Learning Campus High School		4	1		4	9
Newsome Academy	101	187	43	16	70	417
North Huddersfield Trust School	3	3			2	8
Royds Hall, A Share Academy	3	6	7		46	62
Salendine Nook High School Academy	4	1	3		10	18
Shelley College, A Share Academy					1	1
Upper Batley High School		1				1
Westborough High School					3	3
<b>Grand Total</b>	<b>196</b>	<b>280</b>	<b>317</b>	<b>181</b>	<b>970</b>	<b>1944</b>

## Planning Area 32. Huddersfield South West

Table D: Where do children attending school in Huddersfield South West live?

Years 7-11 (Jan 2023)	School Attended		
	Moor End Academy	Newsome Academy	Grand Total
<b>PAA of Residence</b>			
All Hallows' CE (VA) Primary School / Hill View Academy KS2		9	9
Ashbrow School		1	1
Berry Brow I & N School / Newsome Junior School	6	101	107
Birkby I & N School / Birkby Junior School	16	36	52
Boothroyd Primary Academy	2	1	3
Carlinghow Academy		2	2
Christ Church CE Academy	6	3	9
Co-op Academy Smithies Moor		1	1
Crow Lane Primary and Foundation Stage School	2	3	5
Dalton Junior Infant and Nursery School		8	8
Diamond Wood Community Academy / Ravensthorpe CE (VC) Junior School		1	1
Emley First School		1	1
Fixby J & I School		1	1
Flockton CE (VC) First School	1		1
Golcar J I & N School		1	1
Heaton Avenue, A SHARE Primary Academy	1	1	2
Heckmondwike Primary School	1		1
High Bank J I & N School	1		1
Highburton CE (VC) First School		2	2
Hightown J I & N School	2		2
Hill View Academy	2	17	19
Hillside Primary School	11	187	198
Holmfirth J I & N School		2	2
Honley CE(VC) Junior, Infant & Nursery School		2	2
Lepton CofE Primary Academy		1	1
Lindley Church of England Infant School / Lindley Junior School		3	3
Linthwaite Clough J I & Early Years Unit	4	3	7
Lowerhouses CE (VC) Junior Infant and Early Years School	2	86	88
Luck Lane, A SHARE Primary Academy	5	2	7
Lydgate J & I School		1	1
Manorfield I & N School / Staincliffe CE (VC) Junior School	1	1	2
Marsden I & N School / Marsden Junior School	2		2
Meltham Moor Primary School	2	2	4
Moldgreen Community Primary School		14	14
Moorlands Primary School		4	4
Mount Pleasant Primary School	236	43	279
Netherhall St James CE(VC) I & N School / Netherhall Learning Campus Junior School	7	13	20
Netherthong Primary School		3	3
Netherton I & N School / South Crosland CE (VA) Junior School		16	16
Nields J I & N School	2	1	3
Oak CE (VC) Primary School (Junior)/Beaumont Primary Academy	690	70	760
Paddock J I & N School	4	6	10
Pentland I & N School / Headfield CE (VC) Junior School	1		1
Reinwood I & N School / Reinwood Community Junior School	4	3	7
Scholes J & I School		1	1
Scholes Village Primary School		2	2
Shaw Cross I & N School / Bywell CE (VC) Junior School		1	1
Shelley First School		1	1
Shepley First School		1	1
Skelmanthorpe Academy School		1	1
Slaithwaite CE (VC) J & I School	2		2
Spring Grove J I & N School	9	17	26
St Thomas CE (VC) Primary School	4	6	10
Thornhill Lees CE (VC) I & N School / Headfield CE (VC) Junior School	2	2	4
Upperthong J & I School		2	2
Wilberlee J & I School		1	1
Woodside Green, A SHARE Primary Academy	10	7	17
<b>Grand Total</b>	<b>1038</b>	<b>694</b>	<b>1732</b>

Tables E(i) to E(iii) below show how Year 7 places were allocated in this planning area at each of the last three National Offer Days, compared to the number of Year 7 places available at each school and the number of applicants resident in each school's Priority Admission Area (PAA). Blanks in the tables indicate a school does not have a PAA.

**Table E(i)**

Newsome Academy offered an additional 10 bulge places over its new PAN of 180.

2023/24	No of Places	Total No of applicants living in PAA	Place allocated				Place allocated		
			Resident in Priority Admission Area allocated	Resident in Planning Area allocated	Resident outside Planning Area allocated	TOTAL No of places allocated	Resident in Priority Admission Area allocated	Resident in Planning Area allocated	Resident outside Planning Area allocated
<b>Huddersfield South West</b>									
Moor End Academy	210	272	198	4	8	210	94.3%	1.9%	3.8%
Newsome Academy	190	181	96	24	67	187	51.3%	12.8%	35.8%
	<b>400</b>	<b>453</b>	277	17	60	<b>354</b>	78.2%	4.8%	16.9%

**Table E(ii)**

Moor End Academy offered an additional 10 places over PAN before its PAN permanently became 210 from 2023/24.

2022/23	No of Places	Total No of applicants living in PAA	Place allocated				Place allocated		
			Resident in Priority Admission Area allocated	Resident in Planning Area allocated	Resident outside Planning Area allocated	TOTAL No of places allocated	Resident in Priority Admission Area allocated	Resident in Planning Area allocated	Resident outside Planning Area allocated
<b>Huddersfield South West</b>									
Moor End Academy	210	266	198	3	9	210	94.3%	1.4%	4.3%
Newsome Academy	183	159	79	14	51	144	54.9%	9.7%	35.4%
	<b>393</b>	<b>425</b>	277	17	60	<b>354</b>	78.2%	4.8%	16.9%

**Table E(iii)**

Moor End Academy offered an additional 10 places over PAN and Newsome Academy (at the time called Newsome High School) offered an additional 20 bulge places over its PAN of 183.

2021/22	No of Places	Total No of applicants living in PAA	Place allocated				Place allocated		
			Resident in Priority Admission Area allocated	Resident in Planning Area allocated	Resident outside Planning Area allocated	TOTAL No of places allocated	Resident in Priority Admission Area allocated	Resident in Planning Area allocated	Resident outside Planning Area allocated
<b>Huddersfield South West</b>									
Moor End Academy	210	241	174	2	34	210	82.9%	1.0%	16.2%
Newsome High School	203	170	87	14	65	166	52.4%	8.4%	39.2%
	<b>413</b>	<b>411</b>							

## Secondary School Index: School name and planning area.

School Name	Planning Area	Page No.
All Saints Catholic College, Specialist in Humanities	Planning Area 30	262
Batley Girls' High School	Planning Area 24	225
Batley Grammar School	Planning Area 24	225
BBG Academy	Planning Area 24	225
Castle Hall Academy	Planning Area 25	231
Colne Valley High School	Planning Area 26	237
Heckmondwike Grammar School	Planning Area 25	231
Holmfirth High School	Planning Area 29	257
Honley High School	Planning Area 29	257
King James's School	Planning Area 31	268
Kirkburton Middle School	Planning Area 27	243
Manor Croft Academy	Planning Area 28	251
Moor End Academy	Planning Area 32	274
Netherhall Learning Campus High School	Planning Area 31	268
Newsome Academy	Planning Area 32	274
North Huddersfield Trust School	Planning Area 30	262
Royds Hall, A SHARE Academy	Planning Area 30	262
Salendine Nook High School Academy	Planning Area 30	262
Scissett Middle School	Planning Area 27	243
Shelley College, A SHARE Academy	Planning Area 27	243
Spen Valley High School	Planning Area 25	231
St John Fisher Catholic Voluntary Academy	Planning Area 28	251
The Mirfield Free Grammar	Planning Area 25	231
Thornhill Community Academy, A SHARE Academy	Planning Area 28	251
Upper Batley High School	Planning Area 24	225
Westborough High School	Planning Area 28	251
Whitcliffe Mount, A SHARE Academy	Planning Area 25	231