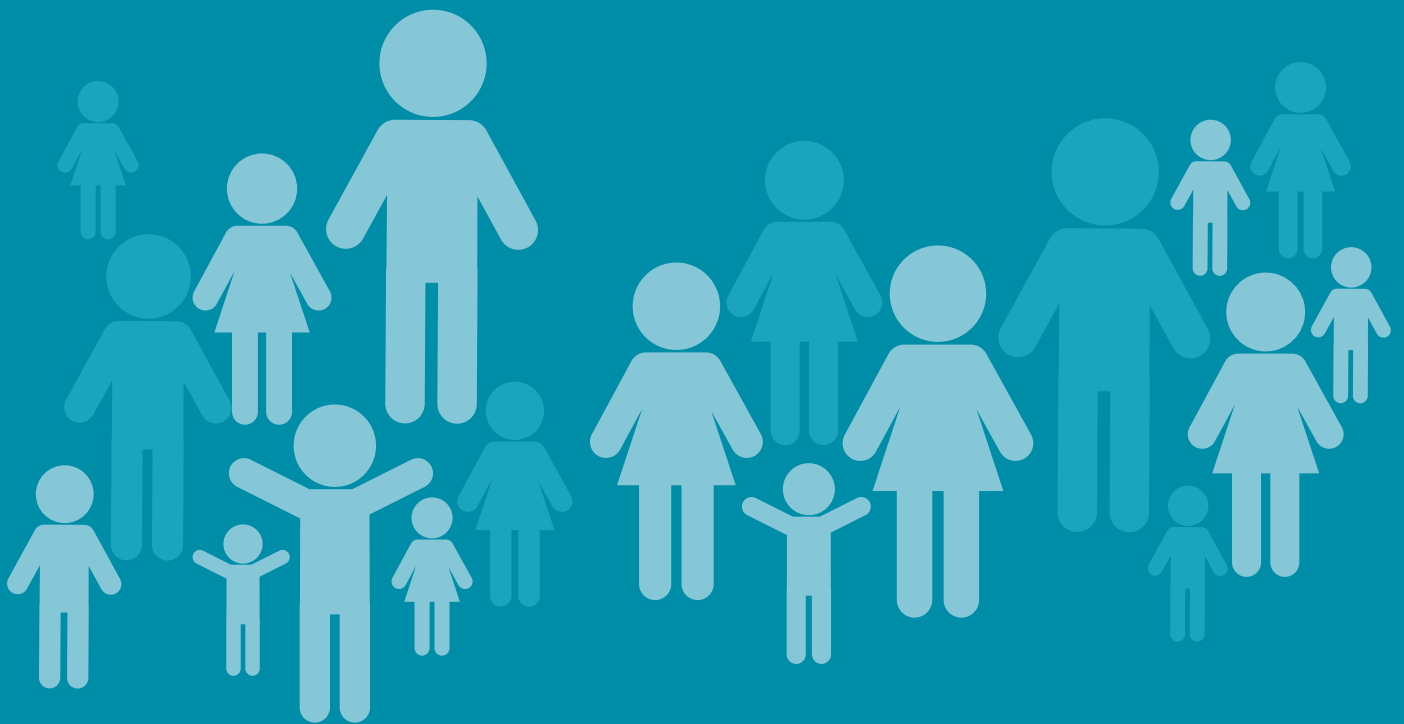


Securing Sufficient High Quality Learning and Childcare Places

Childcare Sufficiency Assessment 2020



Contents

Executive summary.....	1
Introduction and purpose of this report	4
COVID-19 (Coronavirus) pandemic.....	5
Number of early years childcare providers open during COVID-19.....	5
Summer term 2020 data	6
Support given to childcare providers during the COVID-19 pandemic.....	6
An overview of the Kirklees childcare market.....	7
Composition of Kirklees childcare market 18 th November 2020.....	7
Early years occupancy – under 5’s.....	8
Cost of childcare.....	8
Childcare prices.....	9
The quality of childcare in Kirklees.....	9
Ofsted inspection outcomes.....	10
Quality Improvement Team.....	10
Free early learning and childcare for two, three and four-year-old children	11
Number of children accessing their free entitlement	11
2-year-old take up trends	12
3-year-old take up trends	13
30 hours free childcare for 3- and 4-year olds.....	14
Number of children taking up the extended entitlement.....	14
3-and 4-year old take-up by provider type.....	15
Kirklees childcare market – future demand	16
Population of early years children	16
Population of school age children.....	16
School year group numbers 2019-20.....	17
Unemployment - % claimant count rates 2013 - 2020.....	19
Housing and business developments – The Local Plan.....	19
Business sustainability.....	21
Financial impact of COVID-19 on the Kirklees childcare market	21
Business Grants and Discretionary Grant	22
Free entitlement funding.....	22
Detailed financial analysis	22
Future Sustainability.....	23

Business support from the government	24
Kirklees Early Years Funding Formula 2020/21	25
Families in challenging circumstances.....	26
Looked After Children.....	26
Children with special educational needs and disabilities (SEND).....	26
Families in or at risk of poverty	27
Childcare brokerage service	27
Priorities for 2021	28
Contacts	28
Index of appendices.....	29

Executive summary

All local authorities have a statutory duty to ensure there are sufficient early learning places for eligible 2, 3 and 4-year olds and sufficient childcare places for working parents. This document is a study into the supply and demand of childcare within Kirklees.

Assessing childcare places is a complex process which depends on a large number of variables including but not limited to; the effects of changes in child population demographics, employment rates, housing developments, the movement of families within local authority ward areas, local geography and parental choice.

COVID-19 pandemic: In March 2020, the UK Government announced a national lockdown to tackle the spread of coronavirus. Schools and childcare providers could remain open to provide care for children of critical workers and vulnerable children only.

Kirklees is home to many fantastic childminders, nurseries, pre-schools and out of school clubs, all of whom have been working hard in a very challenging fast-moving situation to ensure they are as COVID safe as possible. Throughout the COVID-19 pandemic, Kirklees childcare providers continue to provide a crucial service for working parents and are a vital support for vulnerable children.

However, this year has been very difficult for the sector already struggling due to a continuing decline in the population of children aged 0-4, increased cost pressures and low early years funding rates (Kirklees receive the lowest early years funding rates along with a third of other local authorities in England). Some childcare providers, in particular sessional providers, have been experiencing sustainability pressures during the last few years. Between 1st April and 1st November 2020, 3 group-based providers and 20 childminders closed, and a further 2 group-based providers are expected to close by the end of 2020.

A detailed financial analysis was carried out from a small sample of 24 childcare providers in Kirklees to understand the financial impact of COVID-19. The analysis revealed that during the period between April and August 2020 providers with a higher percentage of fee paying customers suffered the most due to losing most or all of their fee income during lockdown and a significant reduction in demand post lockdown. Although these providers were able to access financial support from the various government schemes some were not able to recover all their losses. Approximately half of the providers in the sample had a deficit of funds at the end of this period, some of which suffered significant losses, the other half accumulated a surplus of net income.

At this point in time, it is impossible to predict the long-term effects the pandemic will have on the childcare market. Changes to working patterns, the increase in home working and

the rising unemployment rate could affect the demand for paid childcare. The Kirklees average occupancy rates have decreased by 4% overall this autumn compared to autumn 2019, the biggest impact being on home-based providers which have experienced a 7% decrease. There are larger variations at ward level however these figures are affected more by changes in the childcare market, parental preference for a particular provider type and data return rates from providers.

A graduated approach is taken to manage the childcare market, the local authority intervenes only when required to ensure there are sufficient places in a local area. However, the Childcare Sufficiency Team provides a universal offer of advice and support to childcare providers with sustainability risks which has become more important in recent months. Details about support given to childcare providers during the COVID-19 pandemic are included in the report.

There are 826 registered childcare providers in Kirklees, together they provide 25,765 childcare places. 465 providers are registered to deliver early learning places for eligible 2, 3 and 4-year-old children.

Based on the data gathered from childcare providers and no unsolved brokerage cases, evidence suggests there is sufficient childcare and early learning provision with some spare capacity across Kirklees. However, parents of children with SEND can experience difficulty in finding suitable childcare for older children aged 5-18 years.

Outcomes for children remain good with support from the Early Years Outcomes Team enabling the quality of childcare in Kirklees to continue to be high with 98% of early learning and childcare providers rated good or above for all provider types, this is 4% higher compared to a year ago. The team work closely with newly registered childcare settings to ensure excellent high-quality provision is established from the start.

Increasing take-up of free early learning by eligible 2-year olds continues to be a key priority. In spring 2020 the take-up rate in Kirklees was 74%¹ which is above the national average of 69%. Due to the disruption caused by COVID-19 take-up rates have understandably suffered, no data is available for summer 2020 however the take-up rate in autumn 2020 was 66%, this is a 13% decrease from the previous autumn.

The average take-up level is masked by significant variations at a local level. Kirklees Council will continue to develop strategies and work with partners to offer support and encouragement to parents with eligible 2-year olds to take up their free place. Similarly, the pandemic has affected take up of 3-year-old places too, although not as stark as the

¹ National take-up rates differ slightly to local rates due to the different method of calculation; official statistics show Kirklees rate to be 70%.

effect on 2-year-old take-up, autumn term this year has decreased by 6% compared to autumn 2019.

Due to the disruption caused by COVID-19 it has not been possible to progress the key priorities outlined for 2020 hence the aim is to continue focusing on these priorities alongside some new priorities for 2021.

Priorities for 2021:

1. Continue to support parents of two-year olds to take-up their free early learning entitlement by further development of the Action Plan, including establishing a Parent Champion Scheme.
2. Support and facilitate training for childcare providers to review their business model and remain viable.
3. Building on the childcare brokerage system established in response to the pandemic, review and develop the current brokerage system.
4. Review and enhance the Family Information Directory.
5. Build on the COVID-19 early years working group to create even stronger links and relationships with the sector connecting with the pre-existing early years reference group.

Introduction and purpose of this report

Kirklees Childcare Sufficiency Assessments have been published on an annual basis since they became a statutory duty of the Childcare Act 2006. The Childcare Sufficiency Assessment (CSA) is a study into the supply and demand of childcare within Kirklees and is a vital tool to share information with the public, elected members and the childcare market itself. The local authority also has specific statutory duties in relation to childcare sufficiency:

- To ensure there are sufficient early learning places for eligible 2, 3-and 4-year olds
- To ensure there are sufficient extended free entitlement places for eligible 3-and 4-year olds and sufficient childcare places for working parents
- To provide information, advice and guidance to parents/carers seeking childcare

The CSA and ward profiles provides the evidence base to justify interventions required to help the council meet its statutory duty to ensure there is sufficient childcare available in Kirklees. Due to the pandemic ward profiles have not been updated to reflect 2020 data however additional ward level information has been provided in the appendices.

The provision of early learning and childcare supports the Council's shared outcomes for Kirklees by helping to achieve the following shared outcomes of the Council:

Best start

- Children have the best start in life

Aspire and achieve

- People in Kirklees have aspiration to achieve their ambitions through education, training, employment and lifelong learning

Sustainable economy

- Kirklees has sustainable economic growth and provides good employment for and with communities and businesses

Full details of the Council's vision for Kirklees can be found in the Council Plan 2020/21

<https://www.kirklees.gov.uk/beta/delivering-services/council-plan.aspx>

Data sources

Most of the data contained in this report has been collected and produced by the Childcare Sufficiency Team. Data provided by a different department or organisation is labelled accordingly.

COVID-19 (Coronavirus) pandemic

Following the introduction of the national lockdown in March 2020, the council created an online brokerage service to support parents/guardians to secure a school and/or childcare place. All childcare providers were contacted to establish whether they would remain open during the national lockdown.

During the lockdown period (23rd March to 1st June 2020) the Childcare Sufficiency and Early Outcomes Teams dealt with a total of 35 brokerage enquiries for childcare securing places for 70 children of critical workers or vulnerable children.

In April 2020, the Department for Education (DfE) asked all local authorities to collect data relating to the number of children of critical workers and vulnerable children accessing childcare together with the status of early years providers. The data continues to be collected on a weekly basis, which allows the local authority to continue to review the childcare market and highlight any sufficiency issues.

On 1st June, the government announced the wider opening of early years and childcare settings.

Number of early years childcare providers open during COVID-19

Date	Home based Childminders	Group based early years providers	School based early years settings	Total open	% open
06/04/2020 (Easter holidays)	105	139	24	268	52%
04/05/2020	106	53	69	228	44%
04/06/2020	163	109	70	342	66%
02/07/2020	182	155	72	409	79%
06/08/2020 (Summer holidays)	195	98	2	295	57%
10/09/2020	214	127	2	343	66%
08/10/2020	229	177	74	480	93%
05/11/2020	233	173	74	480	93%

Note: This table excludes out of school and holiday provision. From 17th September 95% of early learning and childcare providers were open, throughout the autumn term a few providers closed on a temporary basis to meet isolation guidelines.

Summer term 2020 data

Throughout this report and the appendices, summer term data for the free entitlements is based on the number of children and hours funded at childcare providers rather than the number of children attending. Actual take-up (children attending) was affected by the pandemic following government restrictions during lockdown. When restrictions were lifted on 1 June, parental confidence in using childcare was affected hence take-up was lower than usual. Following government guidance childcare providers were funded as normal (as if all children were attending).

Support given to childcare providers during the COVID-19 pandemic

Kirklees Council and central government have supported childcare providers during the pandemic through:

- Continuing to pay the free entitlements for two, three and four-year-olds
- Additional free entitlement funding given to ensure sufficient childcare places for vulnerable children and those of critical workers (local decision)
- A temporary increase to the free entitlement funding rate until March 2021 (Spring term) (local decision)
- Coronavirus Job Retention Scheme (extended until 31 March 2021)
- Self-employment Income Support Scheme (extended until 31 March 2021)
- Small business grants
- Discretionary grants for childcare providers (local decision)
- Business rate relief for 2020/21
- PPE grab packs were supplied by the Council (local decision)

The Childcare Sufficiency and Early Outcomes Teams provided ongoing support with important key messages posted daily on a dedicated Kirklees Early Years Providers Facebook page, regular email updates and a number of support webinars.

Kirklees Council has always been proud of the positive relationship and partnership working arrangement it holds with childcare providers and their representatives. In a time of crisis these arrangements have never been so important. A dedicated COVID-19 Early Years Working Group was formed with representatives from each sector of the childcare market. The group met weekly to begin with ensuring the available support was directed to the right place. The group continues to meet regularly and considers all issues relating to the pandemic including local and national guidance, free entitlement funding payments, sustainability concerns, practical and operational issues to support childcare providers through the pandemic period and beyond.

Details of the financial impact of COVID-19 can be found in the Business Sustainability section.

An overview of the Kirklees childcare market

Composition of Kirklees childcare market 18th November 2020

	Number of providers	Number of Ofsted registered places	Number of providers registered for the free entitlements
Group based – full day (PVI and maintained)	173	7,736	173
Group based – part day (PVI and maintained)	9	216	9
Home based (childminders)	251	1,742	193
School nurseries (maintained and academy)	74	3,942	74
Independent school nursery	7	348	7
Out of school (PVI sector)	96	3,080	9
After school tuition (PVI sector)	16	60	0
*Out of school (maintained sector) Breakfast clubs	81	4,959	0
*Out of school (maintained sector) After school clubs	36	1,020	0
Holiday schemes (PVI sector)	76	2,514	0
Holiday schemes (maintained sector)	7	148	0
Total	826	25,765	465

*Primary schools only

Early years occupancy – under 5's

Occupancy is calculated by using the average number of filled places across the week divided by the maximum number of places offered by providers, referred to as the operating capacity. Using termly sufficiency data updates from providers the table below shows occupancy levels collected for the last 4 terms. Due to the COVID-19 pandemic occupancy data was not collected in the summer term 2020.

Type of provision	Summer 2019	Autumn 2019	Spring 2020	Autumn 2020
Group based	74%	67%	73%	63%
Home based (funded childminders)	74%	73%	71%	66%
Schools with nursery provision	85%	68%	77%	66%
Kirklees average	78%	69%	74%	65%

Childcare occupancy rates for the early years age group (under 5s) are affected by seasonal variations of the free early learning entitlement meaning that child numbers are lower in the autumn term when children move into school reception year and peak in the summer term.

There is evidence that demand for childcare has decreased this autumn term as the occupancy rates have decreased by 4% overall this autumn compared to autumn 2019, the biggest impact being on home-based providers which have experienced a 7% decrease.

Ward level data can be found in appendix 3. The table shows larger variations at ward level however figures are affected by changes in the childcare market, parental preference for a particular type of provider and the percentage of sufficiency data returns received from providers.

Cost of childcare

The table below represents the average rate for childminders, day nurseries, pre-schools and out of school care in Kirklees. There may be variations to prices based on the number of hours a family uses, with reductions for longer hours, or discounts for sibling groups. There may also be additional payments for lunch and other meals which are not included in these prices.

Childcare prices

Provider type	Price
Home based (childminders)	£4.09 average price per hour
Day nurseries	£45.82 average price per day
Pre-schools	£10.49 average price per 3-hour session
Out of school care	£14.68 average price for a before and after school session

The quality of childcare in Kirklees

All childcare providers must register with and be inspected by Ofsted. Ofsted is the Office for Standards in Education, Children's Services and Skills who regulate services that care for children and young people and services providing education and skills for learners of all ages. Ofsted give providers an overall grade for the quality of their provision. Schools with nursery provision have an overall inspection grade for the whole school and most also have a separate early years' grade. Schools and providers have four possible outcomes: 'Outstanding', 'Good', 'Requires Improvement' and 'Inadequate'. Providers awaiting their first full inspection are excluded from the inspection outcome calculation shown below.

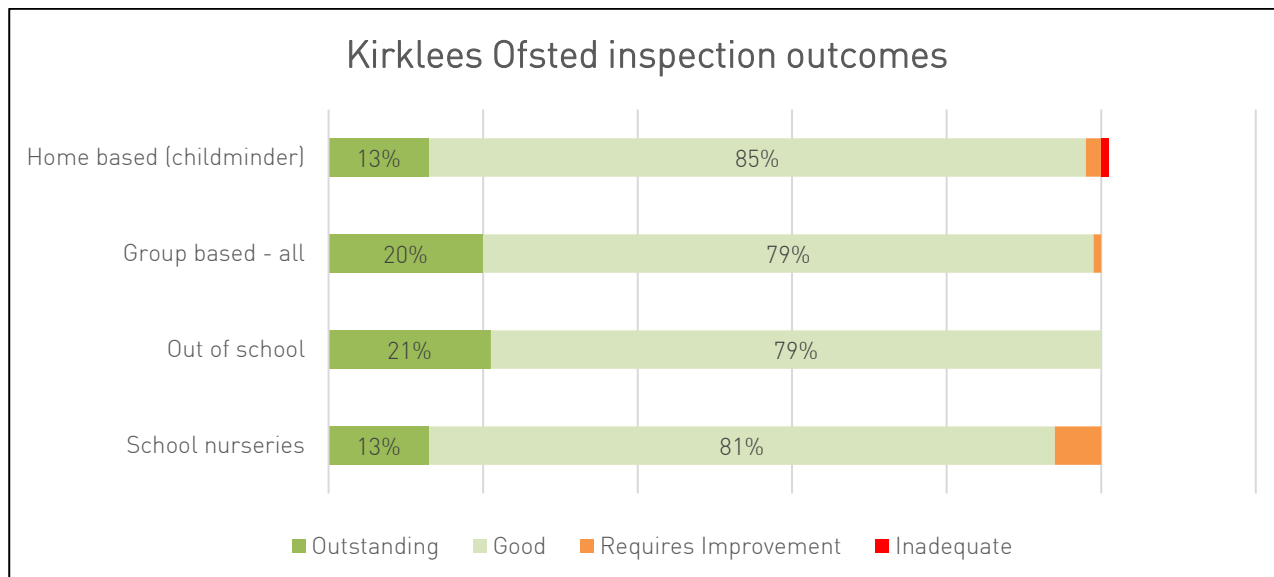
Research is clear, to maximise the outcomes for children it is important that the places available are good quality. Chart 1 shows the Ofsted quality judgements by provider type for Kirklees.

On 17 March 2020, all routine inspections of schools and early years providers were suspended due to the COVID-19 pandemic. From 1 September, Ofsted resumed visits to providers currently judged less than good and had safeguarding and welfare actions raised at their last inspection.

The chart below shows Ofsted inspection outcomes at March 2020.

98% of all Ofsted registered providers are rated Outstanding or Good

Ofsted inspection outcomes



Quality Improvement Team

Kirklees Council has a dedicated team of Early Years officers who have extensive knowledge and experience in improving the quality of practice in Early Years settings and work in partnership to raise outcomes for children. The team offer training, advice, support and guidance to early years providers within the Private, Voluntary and Independent (PVI) sector and schools. The team currently visit all providers on a bi-annual basis but offer increased targeted support to those with a less than good Ofsted outcome where there is a local authority statutory duty to support quality improvement.

Free early learning and childcare for two, three and four-year-old children

The free early learning and childcare entitlement is a national scheme which provides free early learning and childcare for all three and four-year-old children and some two-year olds. Children can have up to 15 hours each week for 38 weeks of the year, 570 hours in total. Some providers offer free places during the school holidays where the entitlement is spread across the year by taking less hours each week, supporting working parents during the school holidays and providing consistency for the child.

The number of children accessing early learning is subject to seasonal variations, for 2 year olds, the number of children and take-up rates are highest in the autumn and at their lowest in the summer. In theory numbers should be relatively the same throughout the year however anecdotal information suggests that some parents delay using their 2 year old place in the winter months (spring term) and some wait until their preferred provider has space in the autumn term. For 3 and 4 year olds combined it is the opposite pattern, numbers are at their lowest in the autumn term due to children moving to school reception year and peak in the summer term as the cohort increases, although the take-up rate throughout the year remains fairly constant.

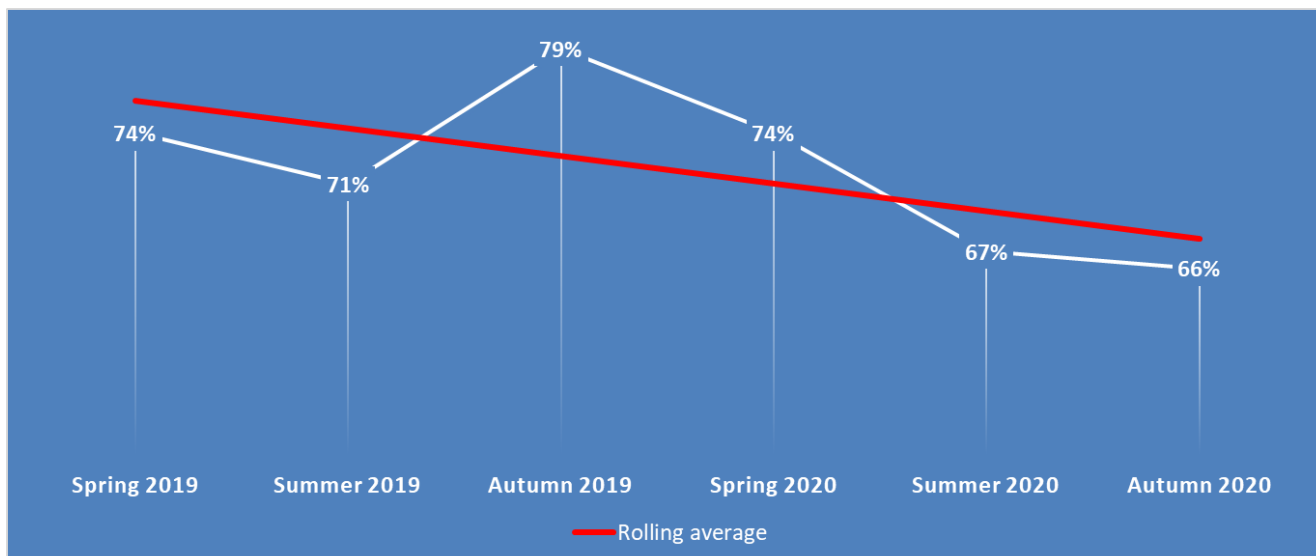
Number of children accessing their free entitlement

	Summer 2019	Autumn 2019	Spring 2020	Summer 2020	Autumn 2020
2-year olds	1,590	1,664	1,556	1,367	1,320
3-year olds (universal entitlement)	5,042	5,347	5,108	4,760	4,955
4-year olds (universal entitlement)	3,202	0	1,873	3,040	0
3- and 4-year olds (extended entitlement)	3,143	2,098	2,848	3,357	2,125
Total number of 15-hour places	12,977	9,109	11,385	12,524	8,400

Notes:

- Due to the pandemic the summer term 2020 figures are based on the number of children and hours funded at childcare providers rather than the number of children attending.
- Most 4-year olds move to school reception year in the autumn term, approximately 2% defer their place and remain in their early years provision therefore no figures are shown in this table for the autumn terms.

2-year-old take up trends



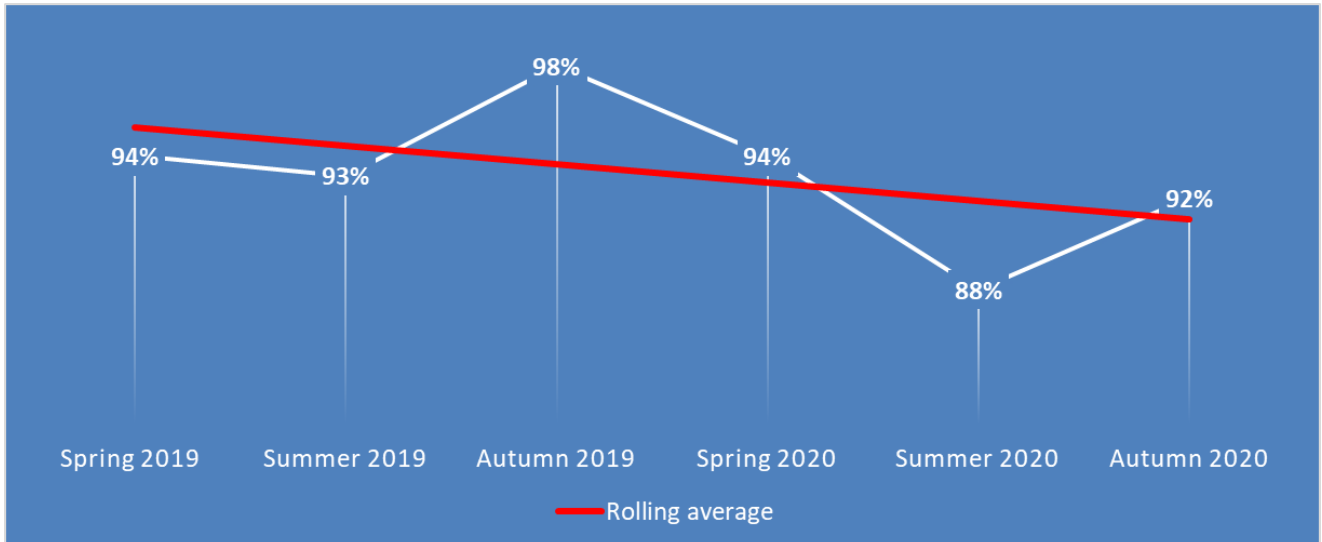
Note: Due to the pandemic the summer term 2020 figures are based on the number of children and hours funded at childcare providers rather than the number of children attending.

The graph shows seasonal variations referred to above. The government measure take-up in the spring term which is considered the mid-point in the year in relation to take-up. In spring 2020 the take-up rate in Kirklees was 74%² which is above the national average of 69%. Due to the disruption caused by COVID-19 take-up rates have understandably suffered, no take-up data is available for summer 2020 however take-up in autumn 2020 is 66%, this is a 13% decrease from the previous autumn. Average take-up levels are masked by significant variations at a local level, this is shown in appendix 7.

Increasing take-up of free early learning by eligible 2-year olds continues to be a key priority. Kirklees Council will continue to develop strategies and work with partners to offer support and encouragement to parents with eligible 2-year olds to take up their free place.

² National take-up rates differ slightly to local rates due to the different method of calculation; official statistics show Kirklees rate to be 70%.

3-year-old take up trends



Note: Due to the pandemic the summer term 2020 figures are based on the number of children and hours funded at childcare providers rather than the number of children attending.

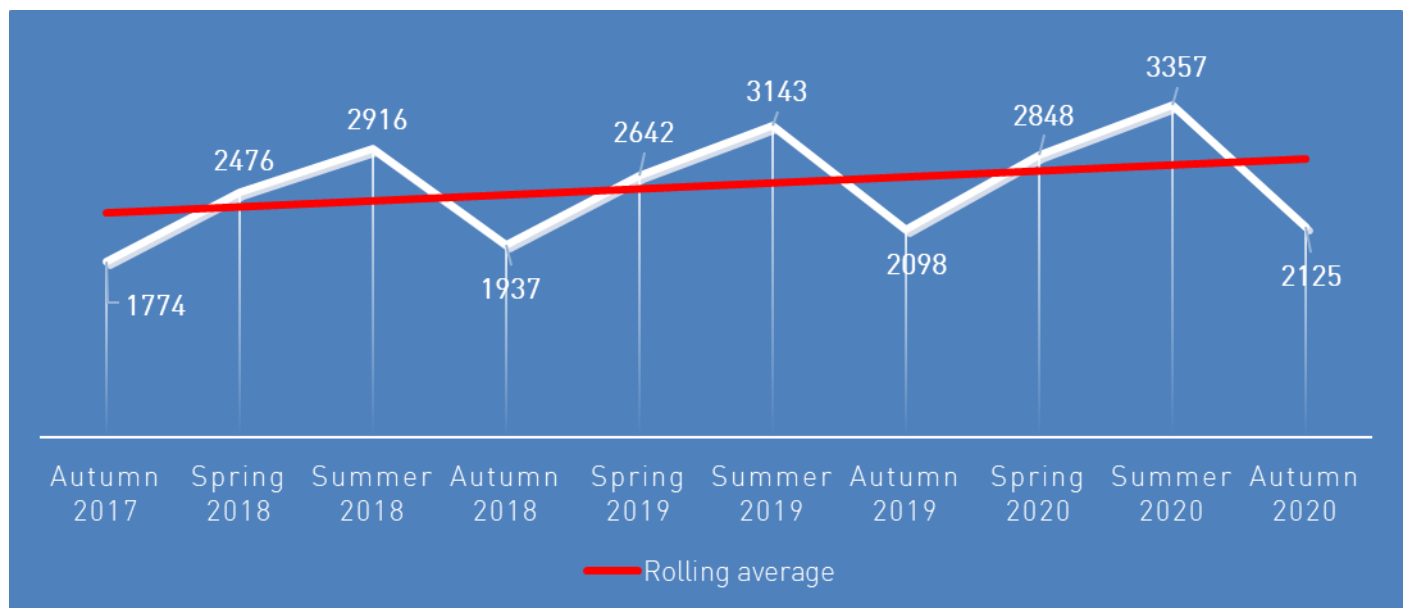
Similarly, this graph also shows the effects of the pandemic on the take up of 3 year old places, although not as stark as the effect on 2 year old take-up, autumn term this year has decreased by 6% compared to autumn 2019. The seasonal variations referred to earlier can only be seen when combining 3 and 4-year-old figures. Take-up rates at ward level are shown in appendix 8 and 9.

30 hours free childcare for 3- and 4-year olds

In September 2017, the entitlement was extended to some working parents of 3 and 4 year olds so they could receive an extra 15 hours per week of free childcare, (this is known as the extended entitlement) details of the eligibility criteria can be found

<https://www.gov.uk/apply-30-hours-free-tax-free-childcare>. Eligible parents can therefore access up to 1,140 free hours until their child starts a reception class in a school.

Number of children taking up the extended entitlement

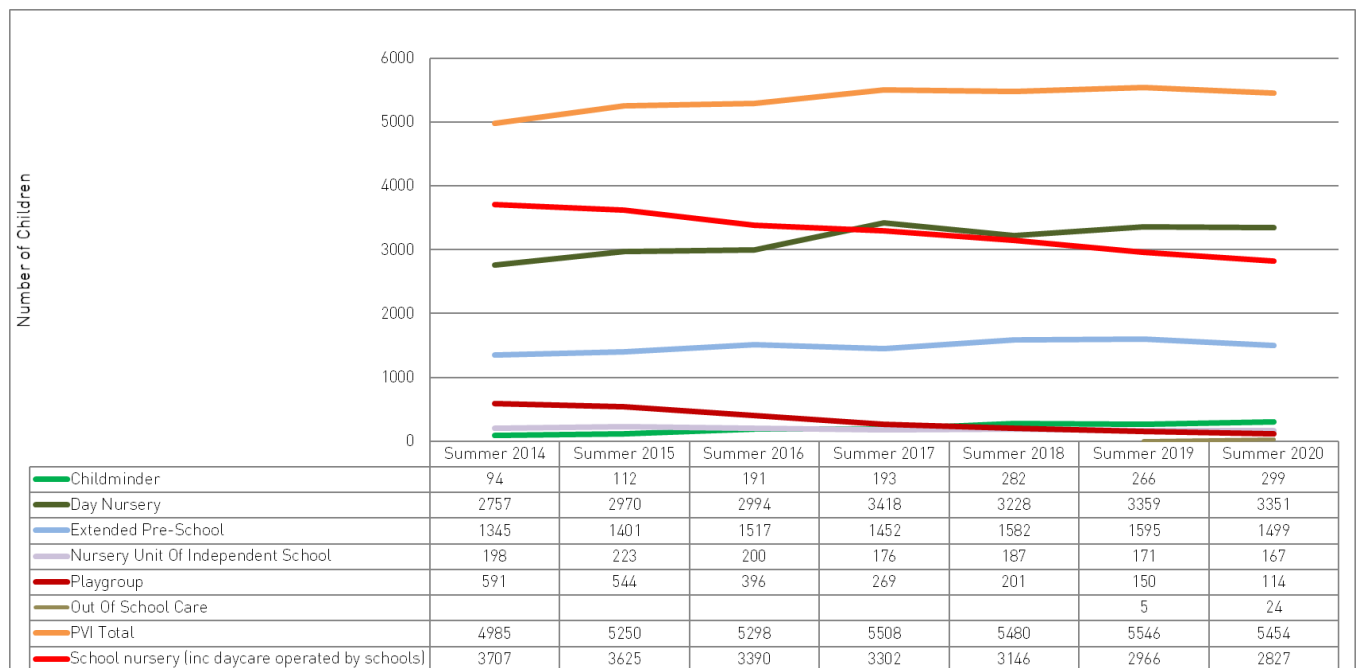


Note: Due to the pandemic the summer term 2020 figures are based on the number of children and hours funded at childcare providers rather than the number of children attending.

It is interesting that the extended entitlement trend is continuing to increase slightly given the affects of the pandemic on the 2 year old entitlement and universal entitlement for 3 year olds. However, the rolling average is skewed by the summer term figures which are based on funding not actual take-up of children and the number has decreased by 59 children this autumn term compared to autumn 2019.

It is expected that unemployment rates will increase, if this happens there will be a reduction in the number of children eligible to the extended entitlement. However, with the furlough scheme being extended to March 2021 and a temporary relaxing of the minimum wage threshold it could be September 2021 before this takes effect.

3-and 4-year old take-up by provider type



Note: Due to the pandemic the summer term 2020 figures are based on the number of children and hours funded at childcare providers rather than the number of children attending.

Over several years demand has shifted to more flexible provision (day nurseries, extended pre-schools and childminders) over less flexible sessional provision (some playgroups and some schools with nursery provision). However, this may change, due to the pandemic peoples working patterns and location have changed hence this could affect preferences for different types of provision in the future.

The above chart also shows that more children now access a place in the private, voluntary and independent (PVI) sector than nursery provision in maintained schools and academies. The percentage has increased from 57% in PVI settings in 2014 to 66% in 2020.

Kirklees childcare market – future demand

Population of early years children

In total there are 26,131 children under the age of five living in Kirklees. The table below shows that the population of children aged under 5 is declining.

Age	Number of children aged under 5
0	5,007
1	4,956
2	5,237
3	5,441
4	5,490

Source: NHS GP registration data January 2020 – Kirklees Public Health - age at 31 January 2020

Population of school age children

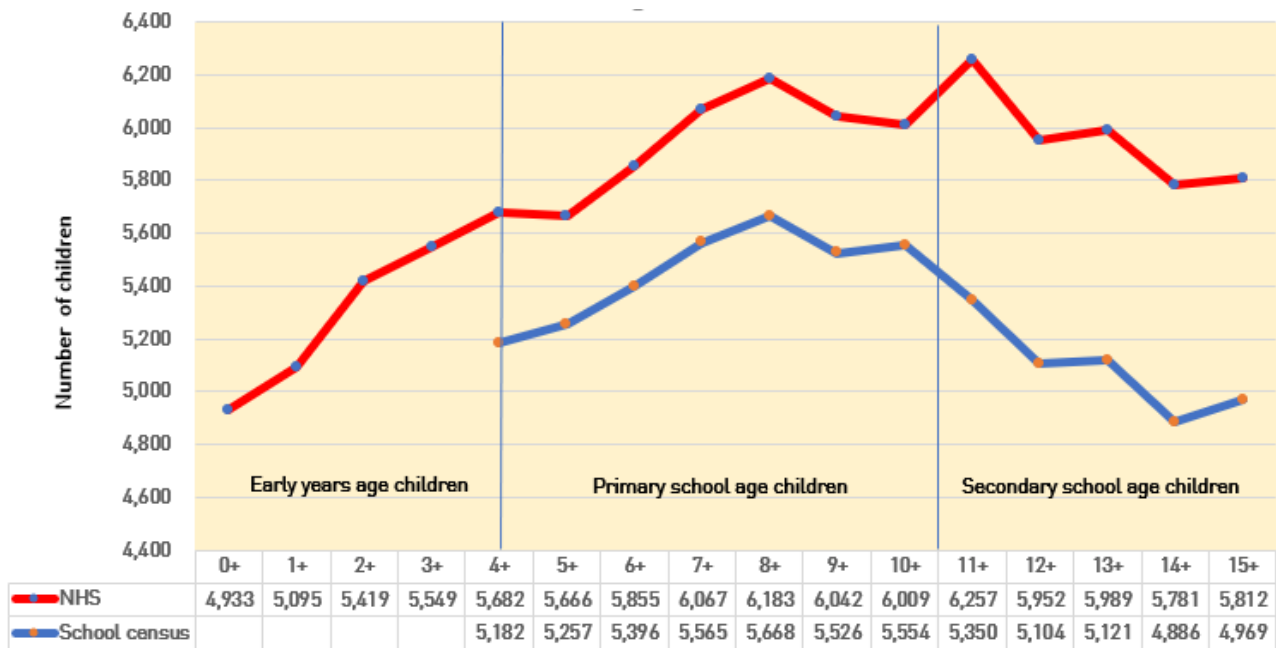
In total there are 40,822 children aged 5-11 and 16,934 children aged 12-14 living in Kirklees.

Age	Number of children aged 5 to 14
5	5,583
6	5,680
7	5,851
8	5,947
9	5,891
10	5,903
11	5,967
12	5,751
13	5,709
14	5,474

Source: NHS GP registration data January 2020 – Kirklees Public Health - age at 31 January 2020

Population numbers in each ward can be found in appendix 5.

School year group numbers 2019-20



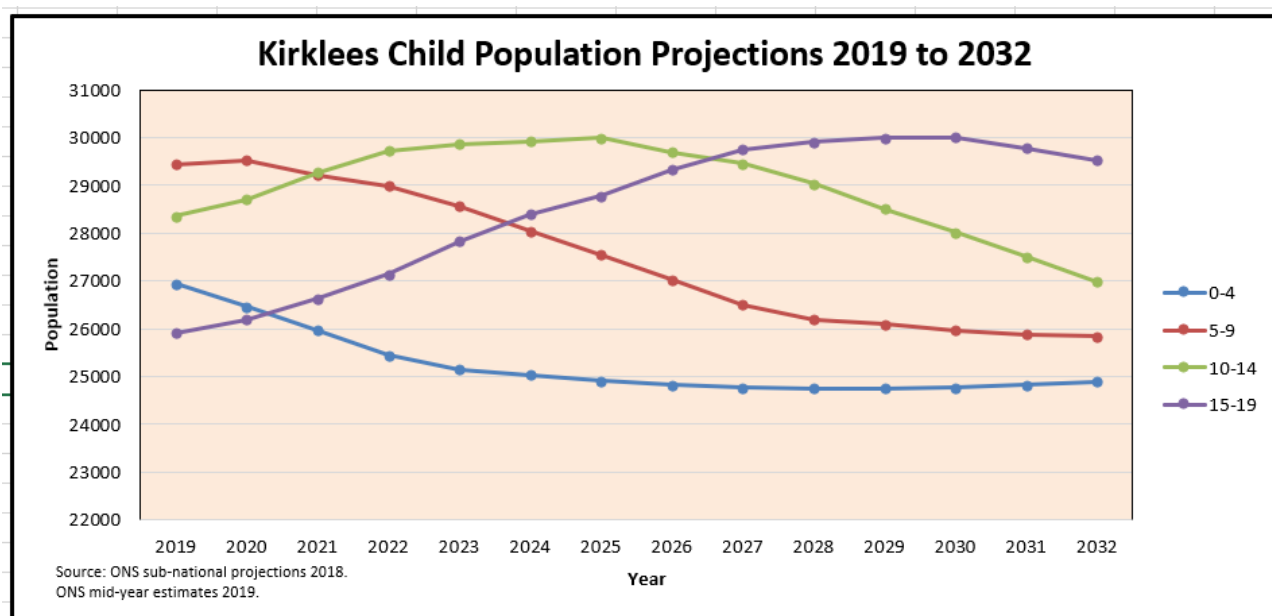
Sources:

NHS GP registration data February 2020 – Kirklees Public Health - age at 31 August 2019
 Kirklees School Census January 2020 – Information Unit, Directorate of Children’s Services

Figures in the chart above are based on the age of the child at 31 August 2019 hence differ slightly to the figures on the previous page which are based on the child’s age at 31 January 2020.

The chart clearly shows a decline in the population of children aged under 5 and 5 to 8 years old (red line) however the number of children aged 8 to 14 years old in a school place is increasing (blue line), hence the demand for out of school childcare could increase in the coming years.

The following table shows the Office of National Statistics (ONS) forecasts for fluctuations in child population at a Kirklees level:



Source: Office for National Statistics

Caution: should be exercised in using GP registration data as a proxy population for the following reasons:

- GP registration data does not always match ONS forecasts although there has been greater synergy in recent years with both indicators showing similar trends
- It is a snapshot data set from a fixed point in time and subject to change
- The data by its very nature will always be incomplete and out of date before publication
- At a planning area level there are greater accuracy risks associated with smaller sample sizes

The context of variation in the different population estimates in Kirklees can be illustrated by looking at census night (27 March 2011). On this night it was estimated that the normal resident population of Kirklees was 422,500. This figure was 12,000 more than the ONS modelling and 12,000 fewer than GP registrations representing a difference of +/- 2.8%. The further into the future attempts are made to predict population numbers, the less accurate these projections are likely to be.

Further information about Kirklees populations can be found at the following links:

Kirklees Joint Strategic Assessment – Population, migration, births and deaths

<http://observatory.kirklees.gov.uk/jsna/population>

Links to more demographic information about Kirklees

<http://www.kirklees.gov.uk/beta/information-and-data/area-and-ward-profiles.aspx>

Kirklees Census information:

<http://www.kirklees.gov.uk/beta/information-and-data/census-information.aspx>

Migration Yorkshire – population and migration information

<http://www.migrationyorkshire.org.uk>

Unemployment - % claimant count rates 2013 - 2020

Year	2013	2014	2015	2016	2017	2018	2019	2020
Kirklees	4.61	3.11	2.29	2.01	2.18	2.95	3.48	6.76

Source: Office for National Statistics (NOMIS)

The unemployment total for Kirklees in June 2020 was 18,385 or 6.8% of 16-64 year-old population (England 6.4%). This represents an increase of +8,925 claimants on the same time last year, the last time that unemployment was numerically this high was in May 1987 (18,305), though in January 1986 it reached 20,855. The lowest number of claimants in recent years was in December 2016 (5,380). The ward with the highest unemployment rate is Dewsbury West (10.5%), with Kirkburton and Denby Dale being the lowest at 3.4%.

In June youth unemployment (18-24) stood at 3,870 or 10.5% of the population aged 18-24 (England 9.2%), +1,950 higher than the same time last year.

Ward level information can be found in appendix 6.

Housing and business developments – The Local Plan

Kirklees Council's Local Plan is a housing and industry development strategy for the borough and identifies sites across Kirklees that could provide homes or business premises. The Kirklees Local Plan was adopted on 27 February 2019. The Local Plan is now the statutory development plan for Kirklees and has superseded the Kirklees Unitary Development Plan. Planning applications must be determined in accordance with the development plan unless material considerations indicate otherwise.

Maps are available to view at the following link to find further detailed information about where and when new housing developments may be built in a local area:

www.kirklees.gov.uk/localplan

It is worth noting the following site allocations propose a substantial level of residential growth which are likely to significantly increase the demand for childcare places and therefore potential opportunities for childcare providers.

- Dewsbury Riverside 2310 dwellings and the potential for 1690 beyond the plan period (Dewsbury South).
- Chidswell, 1535 dwellings (Batley East/Dewsbury East).
- Bradley, 1958 dwellings (Huddersfield North).

To assess the impact of new housing developments on future school places, it is an established practice to use a formula of 100 new homes resulting in the additional demand of 3 places per primary school year group and 2 places per secondary year group. As a guide, locally, 1.5 early years and childcare places per age group (0 to 5 years) and 3.5 after school places per age group (5-11 years) have been used to indicate the impact on demand for childcare places.

Full details and copies of all the available Local Plan documents are available here:

www.kirklees.gov.uk/localplan

Business sustainability

The COVID-19 pandemic has placed a financial strain on childcare providers, particularly those dependent on fee paying children.

Financial impact of COVID-19 on the Kirklees childcare market

In June the Council surveyed local businesses to understand the impact of COVID-19 and measure their overall resilience. 761 businesses completed the survey, with 58 being from the childcare sector; 21 childminders, 28 daycare providers and 9 out of school providers. The key findings are shown below, the first figure relates to childcare businesses whereas the figures in brackets show the overall survey results from all businesses.

- **78%** (72%) would like financial support (e.g. additional loan/grant)
- **90%** (80%) of providers reported turnover is substantially lower than normal and **50%** (42%) expect turnover to substantially reduce by the end of July
- **15%** (27%) are fairly confident their business has the financial resources to continue to operate throughout the coronavirus outbreak, **32%** (20%) stated they were neither confident nor unconfident, **19%** (16%) not confident at all
- **40%** (43%) have cash reserves to last 1-3 months, whilst **29%** (21%) have less than 1 month's cash reserves
- **48%** (40%) of providers are extremely concerned they have insufficient cash reserves
- **45%** (37%) of providers are extremely concerned about cash flow and/or liquidity and capital
- **69%** (57%) of providers are extremely concerned about loss of revenue
- **56%** (37%) are extremely concerned about retaining customers
- **45%** (32%) are extremely concerned about long-term viability
- **36%** (52%) have accessed the small business grant fund / retail, leisure and hospitality grant fund
- **64%** (71%) have accessed Government support schemes
- **52%** (51%) have accessed the Government's furlough scheme

Key challenges

- **60%** (52%) state attracting new customers/customer retention
- **52%** (57%) cashflow
- **24%** (33%) accessing government financial support
- Government needs to go further and give clear guidance
- Lack of support from the childcare insurance industry
- Grants funding was required sooner
- Loss of revenue from fee paying children
- Costs associated with extra cleaning and PPE

Business Grants and Discretionary Grant

Out of 192 group providers, at the time of publication 103 providers have accessed the small business grants, 64 providers received £10,000 and 39 providers received £25,000. Another 16 providers received a discretionary grant. 11 providers received between £1,641 and £4,500 and 5 providers received £10,000.

Some group providers were unable to access the business grants due to either not being registered for business rates or being located in shared premises or communal buildings. These providers were encouraged to apply for a discretionary grant.

Out of 197 childminders 82 received a discretionary grant of £2,250.

Free entitlement funding

An analysis of the free entitlement funding for summer and autumn terms in 2020 compared to funding in the summer and autumn terms in 2019 revealed the following:

In the summer term 2020;

- 120 group providers received less funding, 128 received more funding and 16 had no change (this includes 6 new providers who opened after Summer 2019). For the majority of providers that received less funding the loss was less than 20% and the same was applicable to the majority of providers that received more funding i.e. an increase of less than 20%.
- 70 childminders received less funding, 69 received more funding and 57 had no change.

In the autumn term 2020;

- 132 group providers received less funding, 123 received more funding and 4 had no change. For the majority of providers that received less funding the loss was less than 20% and the same was applicable to the majority of providers that received more funding i.e. an increase of less than 20%.
- 69 childminders received less funding, 86 received more funding and 37 had no change (this includes 7 new childminders who opened after autumn 2019).

Note it is more common that funding to childminders fluctuates due to the small number of registered places however the overall analysis showed there wasn't significant variations compared with the previous year.

Detailed financial analysis

A small sample of 13 group providers (8 Day Nurseries, 1 Playgroup, 4 Extended Pre-schools) and 11 childminders shared their financial information to help understand the impact of COVID-19 on the childcare sector in Kirklees.

The following information was provided; loss of fee-paying income due to the pandemic and any additional costs incurred for example cleaning, extra staffing, PPE, safety measures, etc. Plus, any financial help providers received through Coronavirus Job Retention Scheme (CJRS), Business Grants, Discretionary Grants, other donations, and any cost savings (fixed and variable) including business rates for the financial year 2020/21.

The analysis revealed that during the period between April and August providers with a higher percentage of fee paying customers suffered the most due to losing most or all of their fee income during lockdown and a significant reduction in demand post lockdown. These providers did not manage to recover their loss of fee income through the CJRS. 5 providers suffered substantial losses of income overall, 2 providers had smaller deficits conversely 5 providers in the sample accumulated a surplus of net income and 1 provider broke even. Similar findings were apparent with the analysis on childminder finances, 4 suffered a significant loss, 3 had smaller deficits and 4 gained income during this period.

The Institute for Fiscal Studies published a report on 4 September 2020

[Challenges for the childcare market: the implications of COVID-19 for childcare providers in England](#)

The Department for Education and Government Social Research also published a report in October 2020

[Survey of childcare and early years providers and COVID-19 \(coronavirus\) - GOV.UK \(www.gov.uk\)](#)

Both these reports resonate with key findings locally.

Future Sustainability

It is anticipated that the unemployment rate will rise and with the uncertainty regarding the lasting impact of COVID-19 on the childcare needs of parents, childcare businesses may become financially unstable, especially those providers who rely mainly on fee paying income. However, rising unemployment and universal credit claimants will increase the number of 2-year-old children being eligible for a free early learning place. Conversely it is probable that eligibility for the extended entitlement (30 hours) will decrease if unemployment increases.

Over and above normal inflationary pressures are additional costs as a direct result of changing legislation:

- Increases in the national minimum wage and national living wage rates <https://www.gov.uk/national-minimum-wage-rates>
- Employer pension contributions <https://www.workplacepensions.gov.uk/employer/>

To remain sustainable, it is important that all childcare providers consider the ever-changing market. Providers may consider the following to mitigate risks of sustainability pressures:

1. When the time is right carry-out market research to understand parents needs which may have changed due to COVID-19 and review business models accordingly.
2. Promote the free entitlements and support parents to apply for a place if they think their two-year-old is eligible.
 - o Some parents are unaware of the schemes they may be entitled to, providers can raise awareness by signposting parents to the Childcare Choices website <https://www.childcarechoices.gov.uk/>. The website also contains marketing materials which providers can use to promote the various schemes <https://www.childcarechoices.gov.uk/communications-toolkit/>
 - o Banners to promote the free entitlement offers (2-year-old and 30-hours) are available from Kirklees Council for providers to display in prominent positions.
3. Maximise funding by encouraging parents to supply their details to apply for Early Years Pupil Premium (EYPP) and Disability Access Funding (DAF)
4. Seek professional advice at the earliest opportunity if there are any concerns about sustainability.

Advice, examples and resources to help early years providers run a sustainable childcare business:

- o <https://www.gov.uk/government/collections/early-years-business-sustainability>
- o <http://www.childcareworks.co.uk/resources>
- o https://www.ndna.org.uk/ndna/news/early_years_business_zone.aspx
- o <https://www.eyalliance.org.uk/business-and-management>

The Kirklees Childcare Sufficiency Team can support providers with sustainability concerns or signpost to someone who can, email: childcare.sufficiency@kirklees.gov.uk

Business support from the government

The government are funding a business support project from December 2020 to March 2021 which will include a national business support webinar for childcare providers, to be delivered during the day and evening. The session will offer a suggested framework for thinking about business change and what actions may need to be taken in response.

Kirklees Early Years Funding Formula 2020/21

In November 2019 the Department for Education (DfE) announced an extra £66m for early years from 2020/21. The additional funding from the DfE increased the Kirklees Early Years budget by approximately £500,000. Following consultation and engagement with the sector it was approved to use the additional funding to increase both base hourly rates.

The base rates for the financial year 2020/21 are:

	Permanent rates	Temporary rates		
		Summer 2020	Autumn 2020	Spring 2020
Two-year olds	£5.09	£5.15	£5.28	£5.28
Three-and four-year olds	£4.21	£4.27	£4.40	£4.40

Note: on a temporary basis, from autumn 2019 to summer 2020 both base rates were increased by 6p and from autumn 2020 to spring 2021 (subject to sufficient funds) both base rates will be increased by 19p.

Eligible three and four-year-old children are entitled to additional funding:

- a) Deprivation supplement; measured using the Income Deprivation affecting Children Index (IDACI). The hourly rates are:
 - Band 1: £0.05
 - Band 2: £0.11
 - Band 3: £0.14
 - Band 4, 5 and 6: £0.21
- b) Early Years Pupil Premium; applicable to universal entitlement hours only, the hourly rate is £0.53.
- c) Disability Access Funding (DAF); a lump sum payment of £615 is available each year to funded children in receipt of Disability Living Allowance (DLA).

2021/22

At the spending review in November 2020 the government announced an extra £44m for the early years free entitlements from 2021/22. It is estimated this could increase the Kirklees Early Years Funding budget by approximately £400,000.

Families in challenging circumstances

Looked After Children

The vast majority of looked after children in Kirklees aged 2 to 4 access free early education and care. Where they are not accessing their entitlement, the reason is known, and the validity checked by a lead social worker. Furthermore, protocols are in place to only place Looked After Children in provision judged by Ofsted to be 'good' or 'outstanding'.

The Kirklees Virtual School plays a significant role in ensuring the educational needs of each child are met. An initial PEP (personal education plan) is completed with the early years setting, social worker and carers at age 3 to ensure each child's development in the early years is supported and tracked. This is reviewed on a termly basis.

Children with special educational needs and disabilities (SEND)

The council's ambition for children and young people with special educational needs and disabilities (SEND) is the same for all children and young people – that they achieve well in their early years, at school and in college and lead happy and fulfilled lives.

Children with SEND and their families are entitled to good quality, affordable childcare the same as any other family. The Children and Families Act 2014 stipulates that childcare must be available for young people with special needs or disabilities up to the age of 18. Childcare providers are not allowed to treat a child any less favourably because of their disability and they must not charge more for a disabled child.

There are a number of schemes available to support parents to pay for childcare;

- Two-year-old children in receipt of Disability Living Allowance are eligible for 15 hours of free early education.
- The Disability Access Fund (DAF) is a lump sum payment of £615 per child each year to providers who have eligible funded 3 and 4-year-old children in receipt of Disability Living Allowance (DLA). For further information see <https://www.kirklees.gov.uk/beta/working-with-children/pdf/childcare-providers/disability-access-fund-application-form.pdf>
- Tax-free childcare supports working families by reducing childcare costs. For every £8 a parent pays into an online account, the government tops up an additional £2. Tax-free childcare provides up to £2,000 per year for each child under 12, or £4,000 per year for disabled children under 17. Further information is available at www.childcarechoices.gov.uk

- The SENDIF (SEND Inclusion Funding), previously known as the Access Fund is available to support the inclusion of children with special educational needs and disabilities (SEND) attending early years settings.

[The Kirklees Local Offer](#) brings together information for children and young people with special educational needs and disabilities (SEND) and their families. Kirklees childcare providers are encouraged to let us know any experience they have with caring for children with additional needs to enable parents to make informed choices about suitable childcare.

Kirklees Council will continue to work with parents and providers to ensure good quality, accessible childcare is available to all.

Families in or at risk of poverty

Early learning and childcare supports the return to work to tackle poverty by providing:

- Access to childcare, thereby removing a barrier to work for parents and facilitating work as a route out of poverty
- Access to highest quality early learning experiences thereby helping to improve life chances and facilitate social mobility as a step towards reducing future poverty.

Increasing the take-up of early learning for eligible two-year olds and a continuation of a challenge and support strategy to improve the quality of early learning and childcare provision remain priorities to help tackle poverty.

Early Years Pupil Premium (EYPP) provides extra funding for three- and four-year-old children who have either been in care, adopted from care, or whose parents are in receipt of certain benefits. Childcare providers should use the additional funding to support children's learning and development.

Childcare brokerage service

Most families can find suitable childcare by using the online self-service website, contacting local providers or the Family Information Service. For a minority of families with more complex needs or those which require just a little more help, a personalised brokerage service is available. Brokerage services are tracked and analysed to identify potential childcare sufficiency pressures.

Priorities for 2021

1. Continue to support parents of two-year olds to take-up their free early learning entitlement by further development of the Action Plan, including establishing a Parent Champion Scheme.
2. Support and facilitate training for childcare providers to review their business model and remain viable.
3. Building on the childcare brokerage system established in response to the pandemic, review and develop the current brokerage system.
4. Review and enhance the Family Information Directory.
5. Build on the COVID-19 early years working group to create even stronger links and relationships with the sector connecting with the pre-existing early years reference group.

Contacts

Help to find suitable childcare and find out about help with childcare costs

Website: www.kirklees.gov.uk/childcaresearch

For parents experiencing difficulties finding suitable childcare:

Family Information Service

Tel: **01484 414887**

Email: fis@kirklees.gov.uk

For childcare sufficiency issues or to comment on this assessment:

Email: childcare.sufficiency@kirklees.gov.uk

Responsible Officer:

Debbie Lea

Childcare Sufficiency Team

1st Floor, Kirkgate Buildings

Byram Street

Huddersfield

HD1 1BY

Please note that website links provided in this document were correct at the time of publication but may be subject to change over time.

If you would like to comment on Kirklees Childcare Sufficiency Assessments please send an e-mail to: childcare.sufficiency@kirklees.gov.uk

Index of appendices

Supply	
Appendix 1	Number of childcare providers by ward
Appendix 2	Number of childcare places by ward
Appendix 3	Termly occupancy level based on operating capacity – funded providers
Appendix 4	Number of children per childcare place in each ward

Demand	
Appendix 5	Number of children living in each ward
Appendix 6	Unemployment claimant count rates 2013 – 2020 by ward
Appendix 7	Free entitlement take-up of eligible 2-year-olds by ward
Appendix 8	Free entitlement take-up of 3-year-olds by ward
Appendix 9	Free entitlement take-up of 4-year-olds by ward
Appendix 10	Eligible 2, 3 and 4-year-old children accessing their free entitlement outside ward of residence

Appendix 1 - Number of childcare providers by ward

Ward	Home based	Group based – full day (PVI and maintained)	Group based – part day (PVI and maintained)	School nurseries (maintained and academy)	Independent school nursery	Out of School (PVI sector)	After school tuition (PVI sector)	Out of School (maintained Breakfast Club)	Out of school (Maintained after school clubs)	Holiday schemes (PVI sector)	Holiday schemes (maintained)	Total
Almondbury	8	8	1	3	0	3	1	2	1	2	0	29
Ashbrow	8	7	0	4	0	6	0	5	0	2	0	32
Batley East	2	7	1	5	0	0	3	7	0	0	1	26
Batley West	12	6	0	5	1	4	1	6	3	3	0	41
Birstall and Birkenshaw	17	6	0	4	0	5	0	5	3	5	1	46
Cleckheaton	14	7	0	4	0	4	0	3	2	4	0	38
Colne Valley	17	9	0	3	0	6	1	2	0	4	0	42
Crosland Moor and Netherton	12	4	1	3	0	1	0	1	0	0	0	22
Dalton	18	5	2	5	0	5	0	3	0	5	0	43
Denby Dale	8	7	0	3	0	5	1	4	4	3	1	36
Dewsbury East	13	6	1	4	1	2	0	5	1	1	1	35
Dewsbury South	5	9	0	4	2	2	2	4	2	2	0	32
Dewsbury West	6	9	1	4	1	4	0	4	4	4	1	38
Golcar	26	10	0	2	0	8	0	2	1	6	0	55
Greenhead	6	8	1	2	2	3	3	5	2	2	1	35
Heckmondwike	9	8	0	3	0	4	0	3	2	3	1	33
Holme Valley North	8	7	0	2	0	5	0	2	1	3	0	28
Holme Valley South	13	11	0	2	0	7	1	0	0	5	0	39
Kirkburton	7	8	0	0	0	3	0	4	3	3	0	28
Lindley	16	9	0	1	0	7	0	2	2	8	0	45
Liversedge and Gomersal	7	8	1	4	0	5	0	5	3	4	0	37
Mirfield	14	6	0	2	0	2	0	4	2	2	0	32
Newsome	5	8	0	5	0	5	3	3	0	5	0	34
Total	251	173	9	74	7	96	16	81	36	76	7	826

Source: Childcare Sufficiency Team – November 2020

Appendix 2 - Number of childcare places by ward area

Ward	Home based	Group based – full day (PVI and maintained)	Group based – part day (PVI and maintained)	School nurseries (maintained and academy)	Independent school nursery	Out of School (PVI sector)	After school tuition (PVI sector)	Out of School (maintained) Breakfast Club	Out of school (Maintained) after school clubs	Holiday schemes (PVI sector)	Holiday schemes (maintained)	Total
Almondbury	54	299	20	130	0	48	0	65	50	48	0	714
Ashbrow	48	384	0	182	0	126	0	545	0	66	0	1,351
Batley East	22	272	24	253	0	0	0	270	0	0	20	861
Batley West	78	358	0	296	60	106	10	208	50	106	0	1,272
Birstall and Birkenshaw	120	323	0	156	0	103	0	152	96	103	20	1,073
Cleckheaton	82	346	0	208	0	84	0	180	30	84	0	1,014
Colne Valley	105	349	0	126	0	247	0	50	0	172	0	1,049
Crosland Moor and Netherton	78	211	24	218	0	24	0	150	0	0	0	705
Dalton	125	216	38	260	0	124	0	245	0	149	0	1,157
Denby Dale	52	341	0	130	0	148	0	122	134	94	12	1,033
Dewsbury East	89	296	24	286	40	64	0	178	8	40	16	1,041
Dewsbury South	36	315	0	256	140	20	10	805	41	63	0	1,686
Dewsbury West	48	396	34	247	8	101	0	687	260	85	24	1,890
Golcar	186	388	0	104	0	320	0	54	24	193	0	1,269
Greenhead	48	441	26	172	100	167	30	241	43	67	32	1,367
Heckmondwike	84	399	0	143	0	90	0	52	32	50	24	874
Holme Valley North	65	248	0	91	0	190	0	46	16	103	0	759
Holme Valley South	78	401	0	65	0	221	10	0	0	167	0	942
Kirkburton	49	273	0	0	0	124	0	54	50	124	0	674
Lindley	93	414	0	78	0	220	0	120	32	276	0	1,233
Liversedge and Gomersal	60	331	26	156	0	229	0	322	85	194	0	1,403
Mirfield	108	295	0	104	0	138	0	182	69	138	0	1,034
Newsome	34	440	0	281	0	186	0	231	0	192	0	1,364
Total	1,742	7,736	216	3,942	348	3,080	60	4,959	1,020	2,514	148	25,765

Source: Childcare Sufficiency Team – November 2020

Appendix 3 - Termly occupancy levels based on operating capacity (funded providers)

Ward	Summer 2019			Autumn 2019			Spring 2020			Autumn 2020		
	Group based	Home based	School nursery	Group based	Home based	School nursery	Group based	Home based	School nursery	Group based	Home based	School nursery
Almondbury	78%	73%	86%	71%	78%	82%	81%	82%	70%	67%	84%	77%
Ashbrow	81%	56%	78%	70%	36%	59%	84%	58%	67%	66%	27%	44%
Batley East	54%	50%	85%	66%	92%	69%	71%	88%	69%	56%	82%	57%
Batley West	68%	62%	82%	70%	64%	51%	66%	57%	73%	54%	66%	54%
Birstall and Birkenshaw	72%	71%	94%	76%	58%	77%	72%	63%	91%	63%	66%	95%
Cleckheaton	77%	77%	68%	78%	92%	53%	79%	50%	80%	77%	80%	88%
Colne Valley	72%	79%	73%	57%	77%	76%	70%	77%	82%	59%	74%	68%
Crosland Moor and Netherton	72%	82%	86%	44%	80%	72%	64%	79%	84%	48%	67%	61%
Dalton	67%	84%	93%	71%	85%	69%	75%	67%	60%	61%	74%	67%
Denby Dale	68%	85%	66%	60%	79%	53%	66%	76%	60%	44%	58%	45%
Dewsbury East	74%	80%	93%	63%	76%	65%	78%	67%	81%	68%	79%	71%
Dewsbury South	66%	86%	90%	37%	33%	68%	53%	70%	79%	50%	91%	70%
Dewsbury West	84%	60%	92%	60%	67%	55%	81%	56%	75%	67%	13%	66%
Golcar	71%	70%	65%	71%	72%	82%	71%	74%	92%	53%	69%	59%
Greenhead	74%	57%	84%	71%	77%	87%	78%	65%	96%	72%	59%	73%
Heckmondwike	67%	73%	71%	71%	73%	64%	59%	66%	29%	65%	59%	45%
Holme Valley North	90%	47%	86%	75%	54%	77%	77%	89%	89%	64%	88%	79%
Holme Valley South	75%	88%	54%	73%	81%	64%	73%	76%	80%	68%	59%	67%
Kirkburton	78%	74%	0%	57%	81%	0%	67%	76%	0%	64%	79%	0%
Lindley	77%	87%	100%	68%	97%	100%	77%	81%	100%	66%	70%	83%
Liversedge and Gomersal	81%	67%	95%	77%	45%	75%	75%	78%	81%	78%	45%	54%
Mirfield	66%	83%	81%	56%	78%	67%	69%	76%	84%	68%	69%	60%
Newsome	80%	92%	91%	67%	67%	74%	74%	50%	92%	56%	74%	71%
Kirklees average	74%	74%	85%	67%	73%	68%	73%	71%	77%	63%	66%	66%

Source: Childcare Sufficiency Team – November 2020

Note: There are no schools with nursery provision in the Kirkburton ward

Appendix 4 - Number of children per childcare place in each ward

Ward	Children per place based on maximum Ofsted registration aged 5 – 11 years	Children per place based on maximum Ofsted registration Children aged under 5 years	Children per place based on Operating Capacity in Autumn 2020 Children aged under 5 years
Almondbury	6.2	2.0	2.4
Ashbrow	1.5	2.4	3.1
Batley East	6.6	2.2	3.3
Batley West	3.9	1.9	3.0
Birstall and Birkenshaw	3.2	1.8	2.0
Cleckheaton	3.2	1.6	2.0
Colne Valley	2.8	1.8	2.4
Crosland Moor and Netherton	10.1	2.5	6.4
Dalton	2.2	1.8	2.4
Denby Dale	2.2	1.6	2.0
Dewsbury East	5.4	1.9	3.2
Dewsbury South	1.2	1.8	2.6
Dewsbury West	2.6	2.8	3.9
Golcar	2.6	2.0	2.1
Greenhead	4.0	2.0	2.6
Heckmondwike	6.8	2.0	2.5
Holme Valley North	3.5	2.2	2.7
Holme Valley South	3.7	1.6	1.8
Kirkburton	3.5	2.5	2.8
Mirfield	2.8	2.1	2.7
Newsome	2.2	1.5	2.0
Kirklees average	2.9	2.0	2.6

Source: Childcare Sufficiency Team – November 2020

Appendix 5 - Number of children living in each ward by age

Age	0	1	2	3	4	5	6	7	8	9	10	11	12	13	14	15	16	17	Total
Almondbury Ward	175	178	189	190	198	197	209	209	200	245	222	197	220	222	208	209	197	176	3,641
Ashbrow Ward	276	252	257	295	320	304	312	312	313	322	320	322	275	293	296	242	272	259	5,242
Batley East Ward	237	265	246	283	247	284	262	271	301	267	298	274	298	267	290	287	270	298	4,945
Batley West Ward	271	245	304	275	323	318	299	332	303	338	316	323	289	303	291	298	298	278	5,404
Birstall and Birkenshaw Ward	171	197	212	175	207	185	203	209	228	207	215	196	213	184	190	177	182	172	3,523
Cleckheaton Ward	213	174	210	186	185	214	211	201	182	189	216	182	194	168	200	169	188	169	3,451
Colne Valley Ward	190	182	188	206	192	200	192	206	214	223	221	224	219	212	181	198	193	160	3,601
Crosland Moor and Netherton Ward	274	271	269	293	272	307	284	324	315	311	325	315	294	286	271	285	274	273	5,243
Dalton Ward	195	178	203	229	242	205	249	199	255	247	211	227	219	233	212	208	208	178	3,898
Denby Dale Ward	133	147	155	170	163	174	181	183	204	179	194	219	198	198	183	188	178	162	3,209
Dewsbury East Ward	246	271	253	266	253	278	260	271	250	261	234	240	252	230	228	252	215	211	4,471
Dewsbury South Ward	238	251	274	278	268	273	289	288	329	262	288	336	292	322	291	304	328	309	5,220
Dewsbury West Ward	364	370	396	414	420	400	449	396	442	440	415	455	430	390	436	408	388	396	7,409
Golcar Ward	254	212	215	243	226	213	205	229	253	232	223	260	226	232	207	223	217	216	4,086
Greenhead Ward	298	282	300	301	308	312	333	311	314	338	327	299	283	300	285	260	268	259	5,378
Heckmondwike Ward	235	221	231	249	238	256	274	295	269	259	319	259	282	278	231	275	237	254	4,662
Holme Valley North Ward	177	147	153	174	184	185	190	220	188	197	189	202	216	231	212	222	201	182	3,470
Holme Valley South Ward	159	155	147	164	189	172	211	223	232	210	221	255	240	257	238	251	243	250	3,817
Kirkburton Ward	142	139	151	137	160	174	177	175	192	187	175	221	206	179	210	200	200	182	3,207
Lindley Ward	236	226	231	253	252	270	239	258	263	273	279	254	238	247	221	226	211	215	4,392
Liversedge and Gomersal Ward	160	195	218	247	235	239	249	267	261	284	260	277	235	263	240	239	224	222	4,315
Mirfield Ward	163	193	201	193	193	217	211	270	225	226	251	242	250	223	209	233	212	220	3,932
Newsome Ward	200	205	234	220	215	206	191	202	214	194	184	188	182	191	144	181	199	183	3,533
Grand Total	5,007	4,956	5,237	5,441	5,490	5,583	5,680	5,851	5,947	5,891	5,903	5,967	5,751	5,709	5,474	5,535	5,403	5,224	100,049

Source: NHS GP registration data January 2020 – Kirklees Public Health January 2020 - age at 31 January 2020

Appendix 6 - Unemployment – Claimant Count Rates 2013 – 2020 (%)

Ward	2013	2014	2015	2016	2017	2018	2019	2020
Almondbury	3.84	2.47	1.73	1.31	1.73	2.28	2.76	5.48
Ashbrow	7.75	5.38	4.13	3.28	3.4	4.15	5.07	8.68
Batley East	5.44	3.79	3.02	2.86	2.7	3.92	4.46	8.19
Batley West	5.41	3.7	2.85	2.02	2.52	3.65	4.22	8.32
Birstall and Birkenshaw	3.39	2.17	1.61	1.37	1.42	1.94	2.39	5.3
Cleckheaton	4.11	2.75	2.08	2.12	2.08	2.84	3.58	6.62
Colne Valley	2.86	1.78	1.22	1.13	1.22	1.55	2.08	4.6
Crosland Moor & Netherton	6.89	4.66	3.43	3.02	3.02	4.09	4.99	9.14
Dalton	6.05	4.02	3.43	3.22	3	3.58	4.27	7.85
Denby Dale	1.69	1.2	0.66	0.61	0.61	1.01	1.23	3.44
Dewsbury East	5.94	4.37	3.26	2.56	3.13	4.67	4.93	8.57
Dewsbury South	5.27	3.59	2.95	2.33	2.62	3.68	4.18	7.73
Dewsbury West	7.35	5.11	3.48	3.08	3.19	4.58	5.49	10.53
Golcar	4.61	3.08	2.06	1.84	1.89	2.51	3.06	6.32
Greenhead	6.3	4.44	2.96	2.81	3.17	4.6	5.01	9.47
Heckmondwike	4.71	2.89	1.71	1.84	2.23	3.19	3.96	7.45
Holme Valley North	2.35	1.57	1.18	1.08	0.88	1.39	1.45	3.81
Holme Valley South	1.97	1.22	0.73	0.73	1.02	1.19	1.2	3.6
Kirkburton	1.47	0.92	0.57	0.66	0.8	0.77	1.03	3.42
Lindley	3.3	1.86	1.63	1.32	1.5	1.91	2.41	4.98
Liversedge & Gomersal	4.27	2.97	2.09	1.93	2.17	2.99	3.65	6.41
Mirfield	2.64	1.73	1.06	1.15	1.19	1.78	2.02	4.64
Newsome	6.3	4.05	2.95	2.68	3.19	3.58	4.23	7.33
Kirklees average	4.61	3.11	2.29	2.01	2.18	2.95	3.48	6.76

Source: Office for National Statistics (NOMIS)

Appendix 7 - Free entitlement take-up of eligible 2-year-olds by ward

Ward	Spring 2019	Summer 2019	Autumn 2019	Spring 2020	Summer 2020	Autumn 2020	Percentage change from Autumn 2019 to Autumn 2020	Autumn 2020 Number of children not taking up	Autumn 2020 Number of eligible children
Almondbury Ward	95%	88%	78%	71%	69%	69%	-9%	18	58
Ashbrow Ward	68%	66%	74%	70%	62%	57%	-17%	59	136
Batley East Ward	61%	57%	54%	53%	48%	49%	-5%	61	119
Batley West Ward	70%	68%	79%	64%	57%	61%	-18%	50	128
Birstall and Birkenshaw Ward	63%	64%	84%	78%	67%	69%	-15%	17	55
Cleckheaton Ward	72%	83%	82%	74%	64%	55%	-27%	34	75
Colne Valley Ward	94%	91%	88%	84%	100%	69%	-19%	14	45
Crosland Moor and Netherton Ward	71%	71%	79%	73%	65%	65%	-14%	52	147
Dalton Ward	70%	79%	80%	79%	77%	71%	-9%	24	82
Denby Dale Ward	64%	69%	96%	75%	69%	95%	-1%	1	21
Dewsbury East Ward	69%	70%	72%	62%	48%	52%	-20%	64	132
Dewsbury South Ward	79%	79%	86%	78%	73%	70%	-16%	39	129
Dewsbury West Ward	63%	60%	68%	65%	59%	57%	-11%	90	211
Golcar Ward	78%	73%	99%	85%	84%	87%	-12%	10	79
Greenhead Ward	69%	54%	63%	65%	54%	67%	4%	38	114
Heckmondwike Ward	65%	61%	67%	61%	63%	58%	-9%	42	100
Holme Valley North Ward	64%	74%	86%	76%	83%	76%	-10%	9	38
Holme Valley South Ward	93%	77%	72%	82%	67%	69%	-3%	9	29
Kirkburton Ward	90%	100%	100%	96%	75%	75%	-25%	6	24
Lindley Ward	82%	68%	79%	87%	69%	77%	-2%	11	48
Liversedge and Gomersal Ward	72%	76%	72%	77%	59%	61%	-11%	29	74
Mirfield Ward	91%	91%	88%	82%	71%	74%	-14%	14	53
Newsome Ward	80%	71%	91%	88%	76%	78%	-13%	21	95
Kirklees average take-up	74%	71%	79%	74%	67%	66%	-13%	712	1,992

Source: Childcare Sufficiency Team – November 2020

Note: Due to the pandemic the summer term 2020 figures are based on the number of children and hours funded at childcare providers rather than the number of children attending. Also for the summer and autumn terms in 2020 the figures exclude Kirklees children that take their places in areas outside Kirklees.

Appendix 8 - Free entitlement take-up of 3-year-olds by ward

Ward	Spring 2019		Summer 2019		Autumn 2019		Spring 2020		Summer 2020		Autumn 2020	
	Number Taking Up	Take up %	Number Taking Up	Take up %	Number Taking Up	Take up %	Number Taking Up	Take up %	Number Taking Up	Take up %	Number Taking Up	Take up %
Almondbury Ward	174	96%	158	93%	167	99%	181	92%	170	91%	181	95%
Ashbrow Ward	278	91%	277	89%	287	93%	289	94%	261	87%	274	97%
Batley East Ward	242	89%	237	93%	275	100%	248	88%	233	82%	230	89%
Batley West Ward	287	90%	270	88%	289	97%	267	93%	257	93%	265	92%
Birstall and Birkenshaw Ward	201	98%	192	94%	199	100%	172	97%	159	88%	199	95%
Cleckheaton Ward	167	95%	174	99%	180	100%	181	97%	179	93%	187	99%
Colne Valley Ward	197	98%	200	94%	217	100%	206	100%	174	87%	177	91%
Crosland Moor and Netherton Ward	255	93%	250	90%	282	91%	278	91%	241	84%	240	92%
Dalton Ward	221	89%	227	94%	228	100%	224	96%	203	91%	217	98%
Denby Dale Ward	168	100%	158	100%	168	100%	164	97%	156	95%	139	95%
Dewsbury East Ward	235	93%	206	89%	230	100%	194	75%	196	75%	213	79%
Dewsbury South Ward	245	96%	250	93%	263	95%	245	86%	227	82%	257	90%
Dewsbury West Ward	392	94%	388	92%	416	95%	383	90%	354	86%	352	87%
Golcar Ward	183	92%	201	96%	222	100%	209	88%	213	91%	208	93%
Greenhead Ward	286	89%	292	88%	321	94%	307	100%	260	86%	277	90%
Heckmondwike Ward	233	95%	218	95%	232	97%	230	95%	220	88%	231	91%
Holme Valley North Ward	176	98%	182	100%	181	100%	179	99%	162	94%	176	100%
Holme Valley South Ward	176	97%	180	95%	166	95%	157	95%	141	94%	154	95%
Kirkburton Ward	156	100%	158	99%	138	100%	134	100%	133	94%	137	95%
Lindley Ward	236	100%	238	97%	253	100%	242	91%	227	92%	229	97%
Liversedge and Gomersal Ward	216	97%	204	93%	252	97%	230	95%	218	89%	210	93%
Mirfield Ward	181	95%	178	97%	196	99%	186	96%	181	95%	192	100%
Newsome Ward	208	92%	204	93%	185	92%	202	92%	195	86%	210	93%
Kirklees average take-up and total number taking up	5,113	94%	5,042	93%	5,347	98%	5,108	93%	4,760	88%	4,955	93%

Source: Childcare Sufficiency Team – November 2020

Note: Due to the pandemic the summer term 2020 figures are based on the number of children and hours funded at childcare providers rather than the number of children attending. Also for the summer and autumn terms in 2020 the figures exclude Kirklees children that take their places in areas outside Kirklees.

Appendix 9 - Free entitlement take-up of 4-year-olds by ward

Ward	Spring 2019		Summer 2019		Spring 2020		Summer 2020	
	Number Taking Up	Take up %	Number Taking Up	Take up %	Number Taking Up	Take up %	Number Taking Up	Take up %
Almondbury Ward	69	100%	123	95%	47	84%	107	99%
Ashbrow Ward	125	75%	179	84%	107	100%	171	94%
Batley East Ward	105	95%	160	92%	84	100%	127	84%
Batley West Ward	108	93%	188	92%	108	96%	178	95%
Birstall and Birkenshaw Ward	61	78%	113	100%	67	94%	104	90%
Cleckheaton Ward	80	83%	114	90%	50	100%	87	97%
Colne Valley Ward	86	98%	120	86%	79	100%	119	100%
Crosland Moor and Netherton Ward	110	87%	183	93%	88	97%	154	92%
Dalton Ward	80	86%	134	95%	78	94%	133	96%
Denby Dale Ward	57	100%	98	87%	48	100%	81	92%
Dewsbury East Ward	97	82%	161	86%	69	92%	114	92%
Dewsbury South Ward	127	89%	189	96%	103	100%	161	94%
Dewsbury West Ward	128	93%	220	96%	154	100%	244	94%
Golcar Ward	50	89%	88	100%	78	91%	144	100%
Greenhead Ward	111	85%	177	87%	126	100%	172	88%
Heckmondwike Ward	99	94%	168	98%	88	100%	136	98%
Holme Valley North Ward	61	100%	94	100%	70	100%	106	100%
Holme Valley South Ward	59	98%	99	96%	73	100%	118	100%
Kirkburton Ward	56	100%	73	100%	58	100%	79	100%
Lindley Ward	92	100%	155	100%	93	100%	165	100%
Liversedge and Gomersal Ward	87	100%	141	98%	80	93%	134	98%
Mirfield Ward	74	91%	112	93%	68	91%	104	95%
Newsome Ward	56	76%	113	82%	57	92%	102	86%
Kirklees average take-up and total number taking up	1,978	90%	3,202	93%	1,873	100%	3040	95%

Source: Childcare Sufficiency Team – November 2020

Notes:

- Most 4 year olds move to school reception year in the autumn term, approximately 2% defer their place and remain in their early years provision, therefore no figures are shown for the autumn terms.
- Due to the pandemic the summer term 2020 figures are based on the number of children and hours funded at childcare providers rather than the number of children attending.
- For the summer and autumn terms in 2020 the figures exclude Kirklees children that take their places in areas outside Kirklees.

Appendix 10 - Eligible 2, 3 and 4-year-old children accessing their free entitlement outside ward of residence

Ward in which Free Early Education is accessed – Autumn 2020																										
Child's Ward of Residence	Almondbury Ward	Ashbrow Ward	Batley East Ward	Batley West Ward	Birstall and Birkenshaw Ward	Cleckheaton Ward	Colne Valley Ward	Crosland Moor and Netherton Ward	Dalton Ward	Denby Dale Ward	Dewsbury East Ward	Dewsbury South Ward	Dewsbury West Ward	Golcar Ward	Greenhead Ward	Heckmondwike Ward	Holme Valley North Ward	Holme Valley South Ward	Kirkburton Ward	Lindley Ward	Liversedge and Gomersal Ward	Mirfield Ward	Newsome Ward	Grand Total		
Almondbury Ward	139								47	1		1		1	7			1	4	1			9	211		
Ashbrow Ward	1	256					1		2				1	2	59			1		1		1		7	332	
Batley East Ward			209	28	5	1		1			34	5	9			6					1				299	
Batley West Ward			94	192	16						16	6	12		1	10					5	1			353	
Birstall and Birkenshaw Ward			6	11	191	5						1				2					11	1			228	
Cleckheaton Ward			1	5	5	178							2			4					19	3			217	
Colne Valley Ward	1	1					163	3	1						16	10		1	1				4		207	
Crosland Moor and Netherton Ward	1	5					8	219	4	1		2		15	13	1	6			2				72	349	
Dalton Ward	29	8						1	183	1			1	1	17		1		7			1	13		263	
Denby Dale Ward	3									130								1	11	15					160	
Dewsbury East Ward				17	6	1					232	10	18									1				285
Dewsbury South Ward				2	2	1	1				13	323	19									1	3			365
Dewsbury West Ward				13	19		2				52	24	346									6	14			488
Golcar Ward	1	6					35	2	1						176	22							9			281
Greenhead Ward		18					1	1	2					9	263		1							9		359
Heckmondwike Ward		1	12	35	8	6				1	1	2	14			155					52	1				288
Holme Valley North Ward		1					8	16						1	4		145	21	1					8		205
Holme Valley South Ward	2						3	2							1		12	152	4					1		177
Kirkburton Ward	11								3	17		3			4		2	13	99	1			2	4		159
Lindley Ward	1	5					5							20	72					150				5		258
Liversedge and Gomersal Ward				3	8	17	52						3			36						131	2			252
Mirfield Ward	1	1	1		2	2			2	1	1	2	11		1	5										215
Newsome Ward	8	3					1	10	13			1		3	18		7	2	2	2				217		287
Out Of Area	2	7	6	9	24	26	5			8	12	5	6	1	9	5	1	7	2	5	4	3	3			150
Grand Total	200	312	364	315	270	273	230	255	258	160	361	385	442	245	502	235	177	209	134	253	257	190	361		6388	

Source: Childcare Sufficiency Team – November 2020