

# **Appendix C – Environment Agency Rapid Response Catchments**

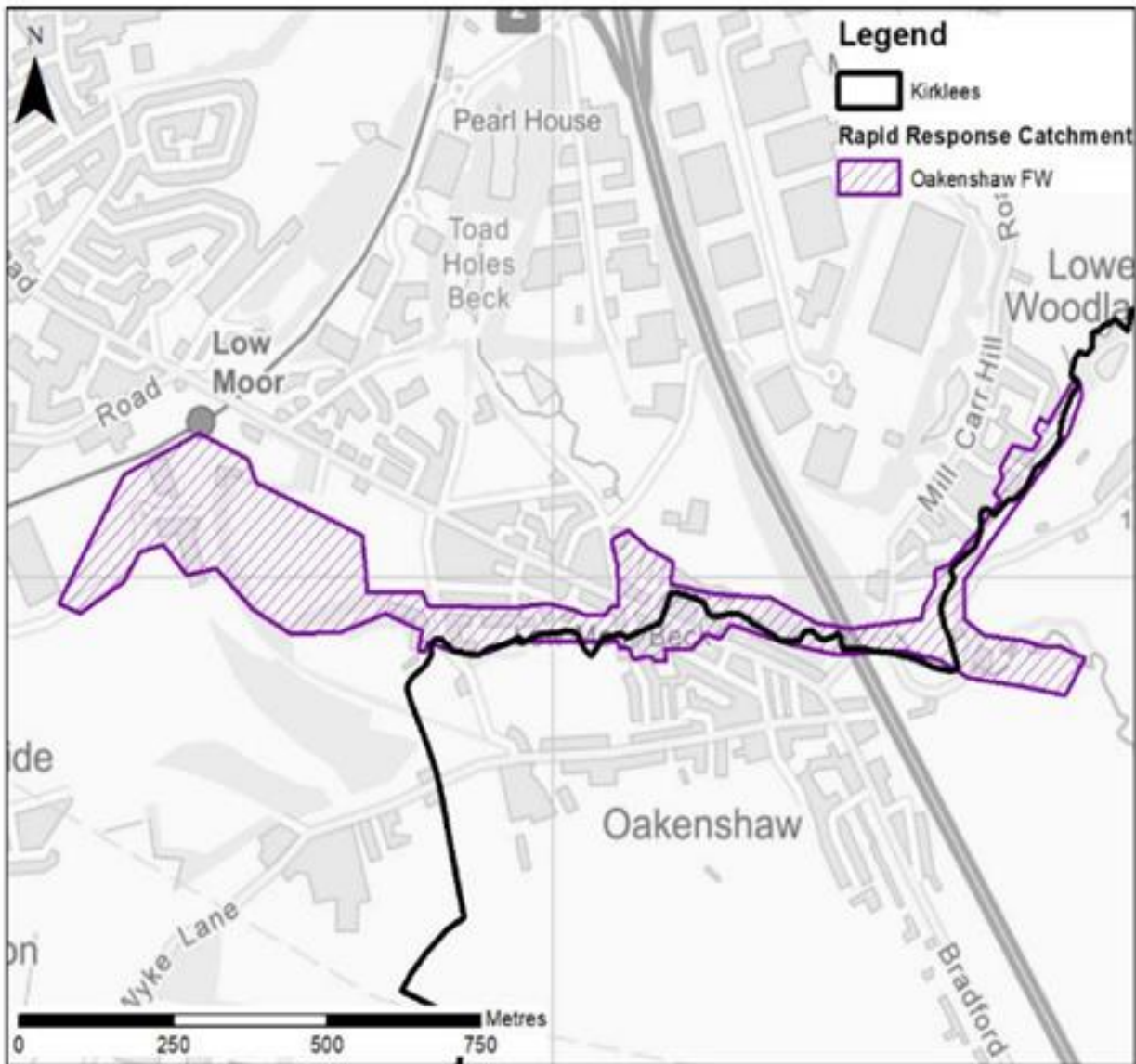
# Contents

Appendix C – Environment Agency Rapid Response Catchments .....	1
ENVIRONMENT AGENCY RESPONSE CATCHMENTS .....	3
1.1 Oakenshaw FW Rapid Response Catchment .....	3
1.2 Brockholes Rapid Response Catchment .....	4
1.3 Holmfirth Rapid Response Catchment .....	5
1.4 Marsden Rapid Response Catchment.....	6
1.5 New Mill Rapid Response Catchment .....	7
1.6 Ravensthorpe Rapid Response Catchment .....	8

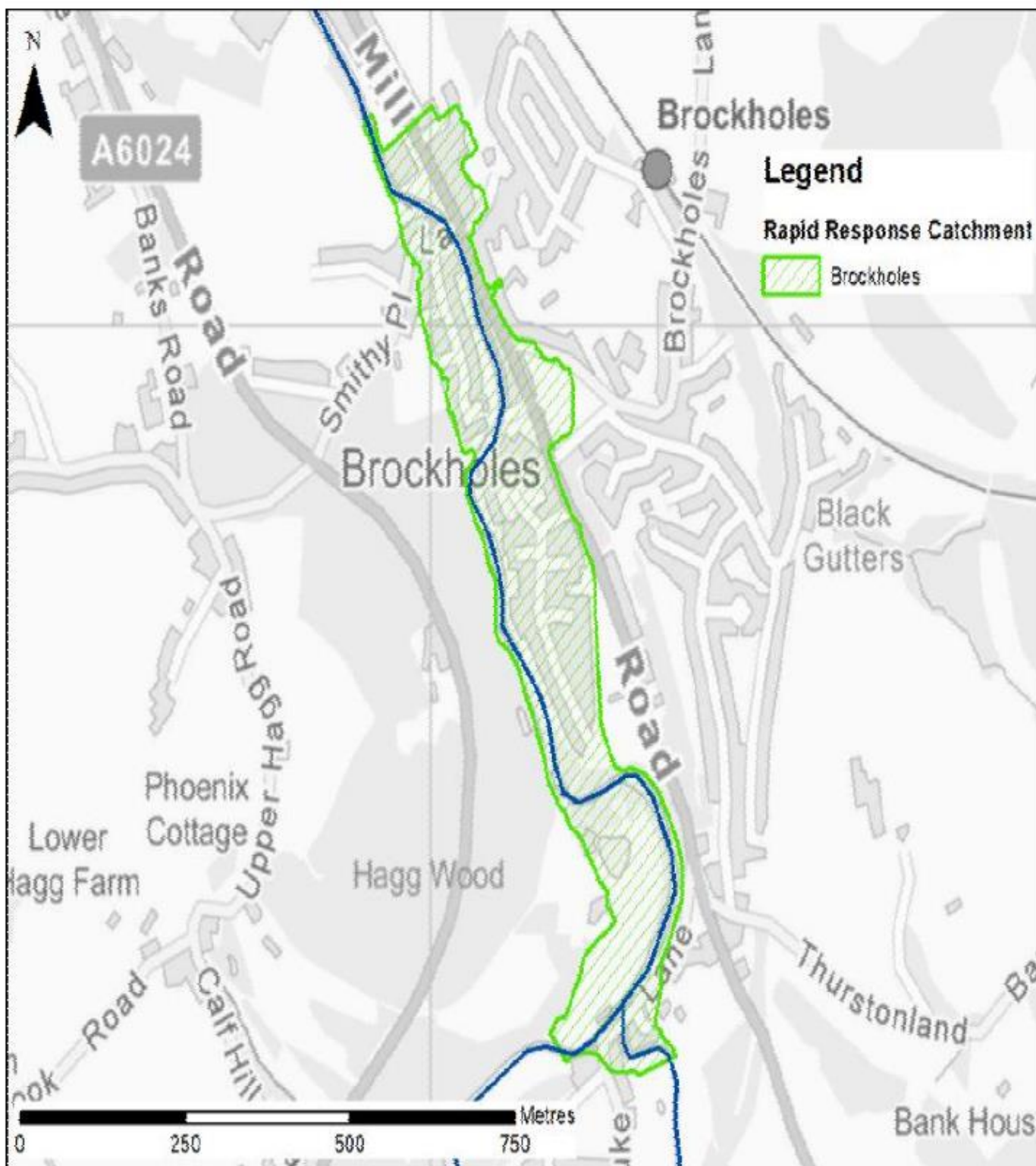
# ENVIRONMENT AGENCY RESPONSE CATCHMENTS

The Environment Agency has a Rapid Response Catchment (RRC) register which was prepared using a combination of flood event factors, such as time to maximum flood depths and velocities, and the amount of debris carried in the floodwater. Potential property numbers affected, and vulnerable sites such as care homes and campsites, were also considered.

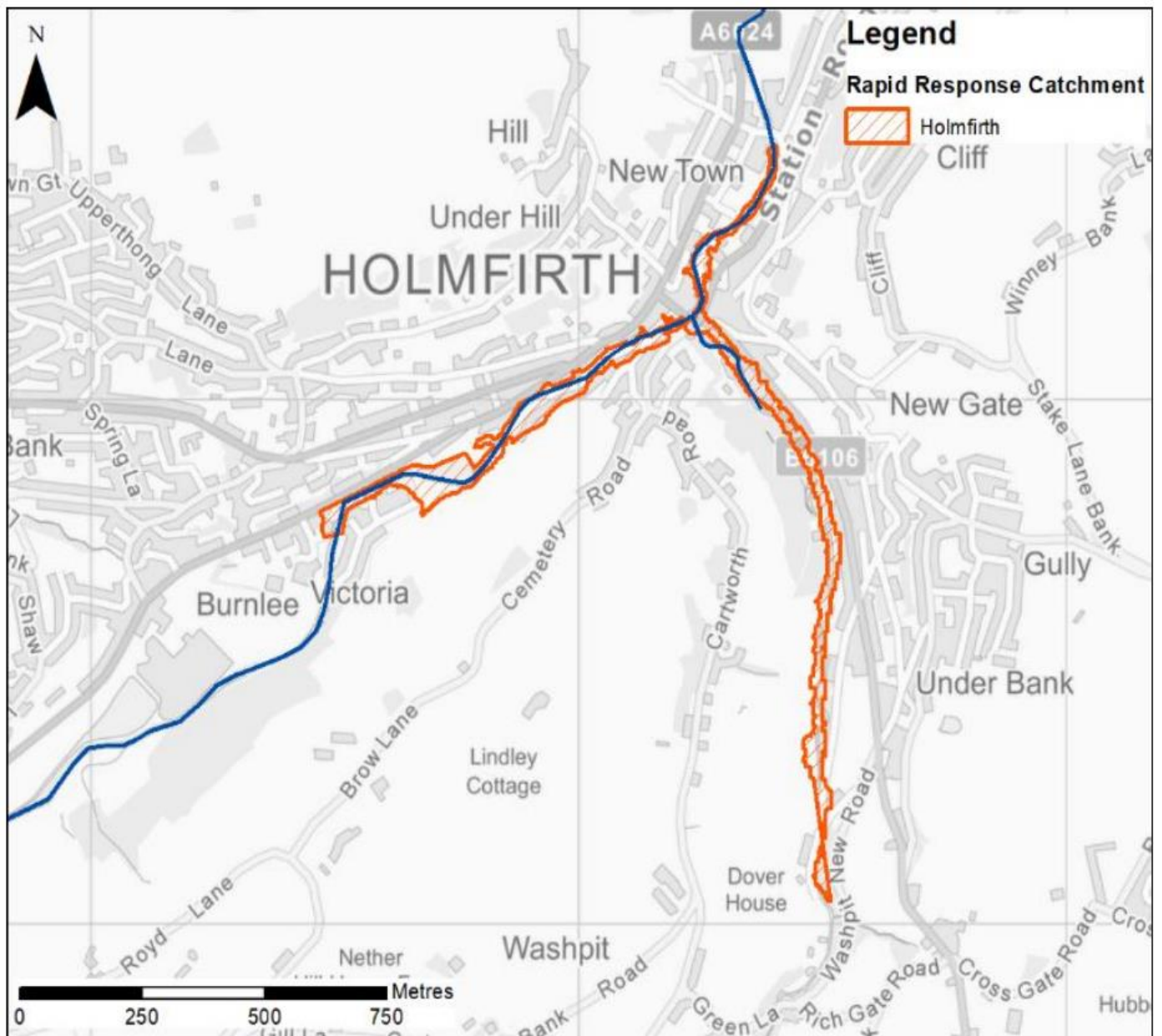
## 1.1 Oakenshaw FW Rapid Response Catchment



## 1.2 Brockholes Rapid Response Catchment

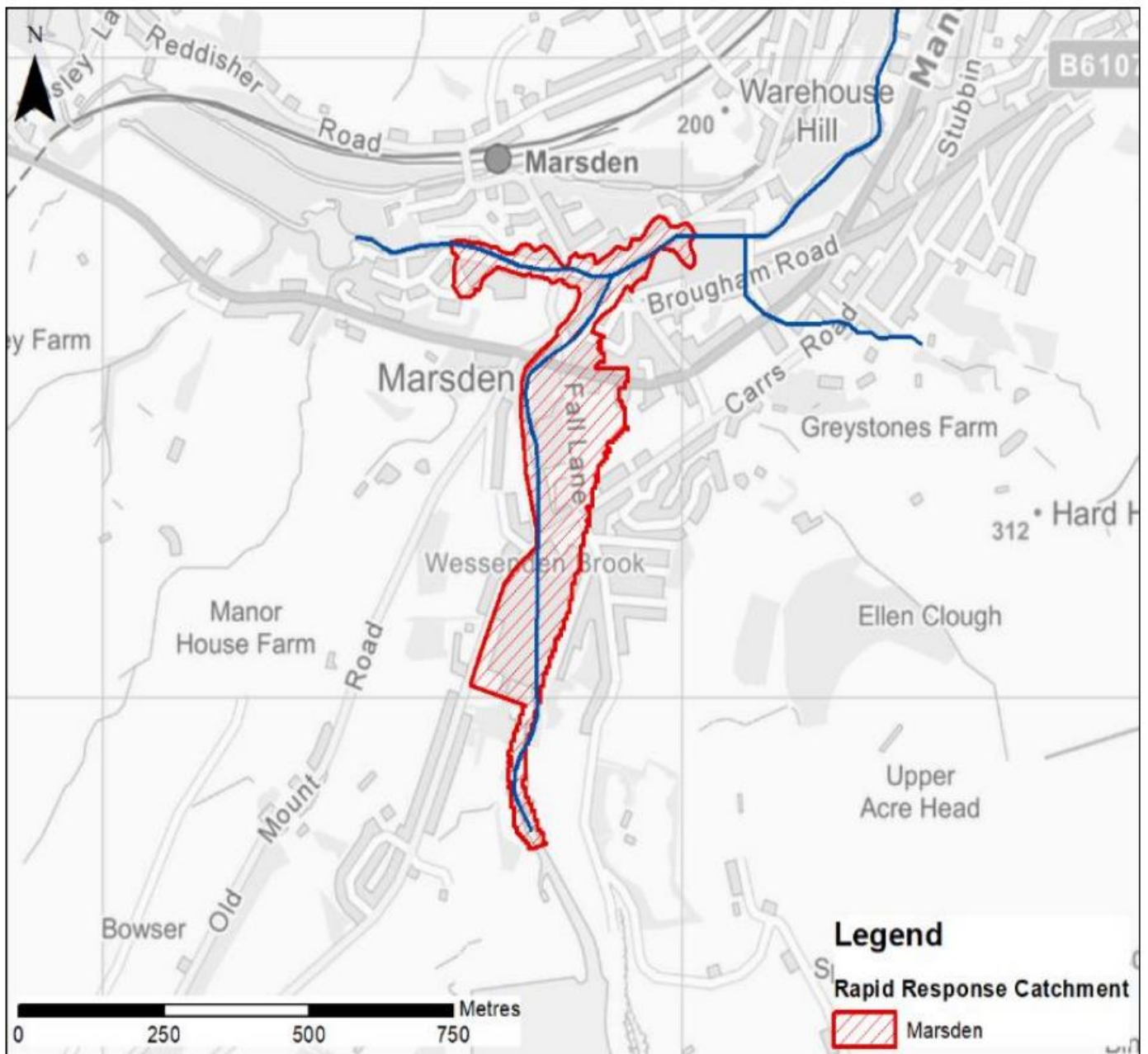


### 1.3 Holmfirth Rapid Response Catchment

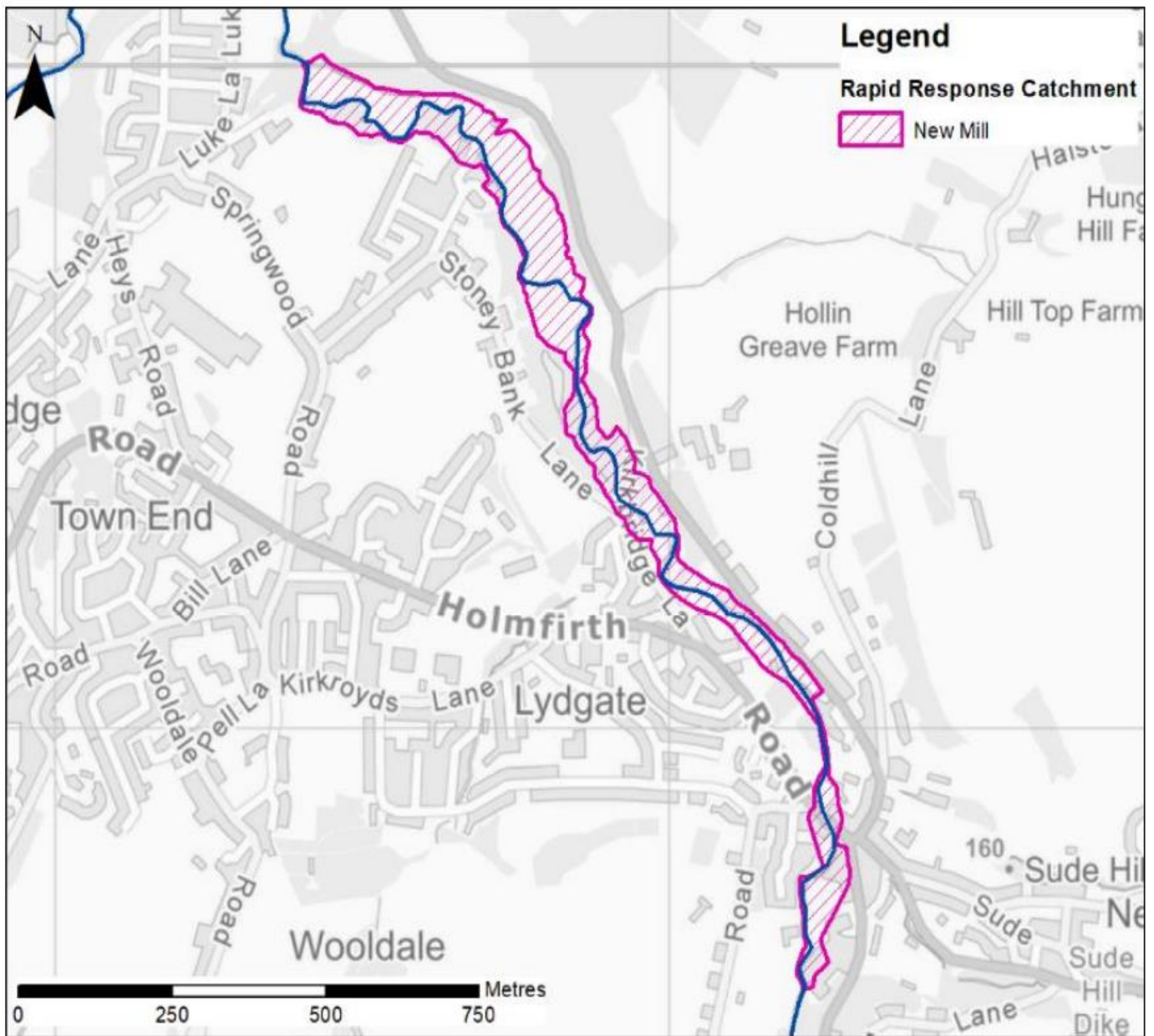




### 1.4 Marsden Rapid Response Catchment



### 1.5 New Mill Rapid Response Catchment



## 1.6 Ravensthorpe Rapid Response Catchment

