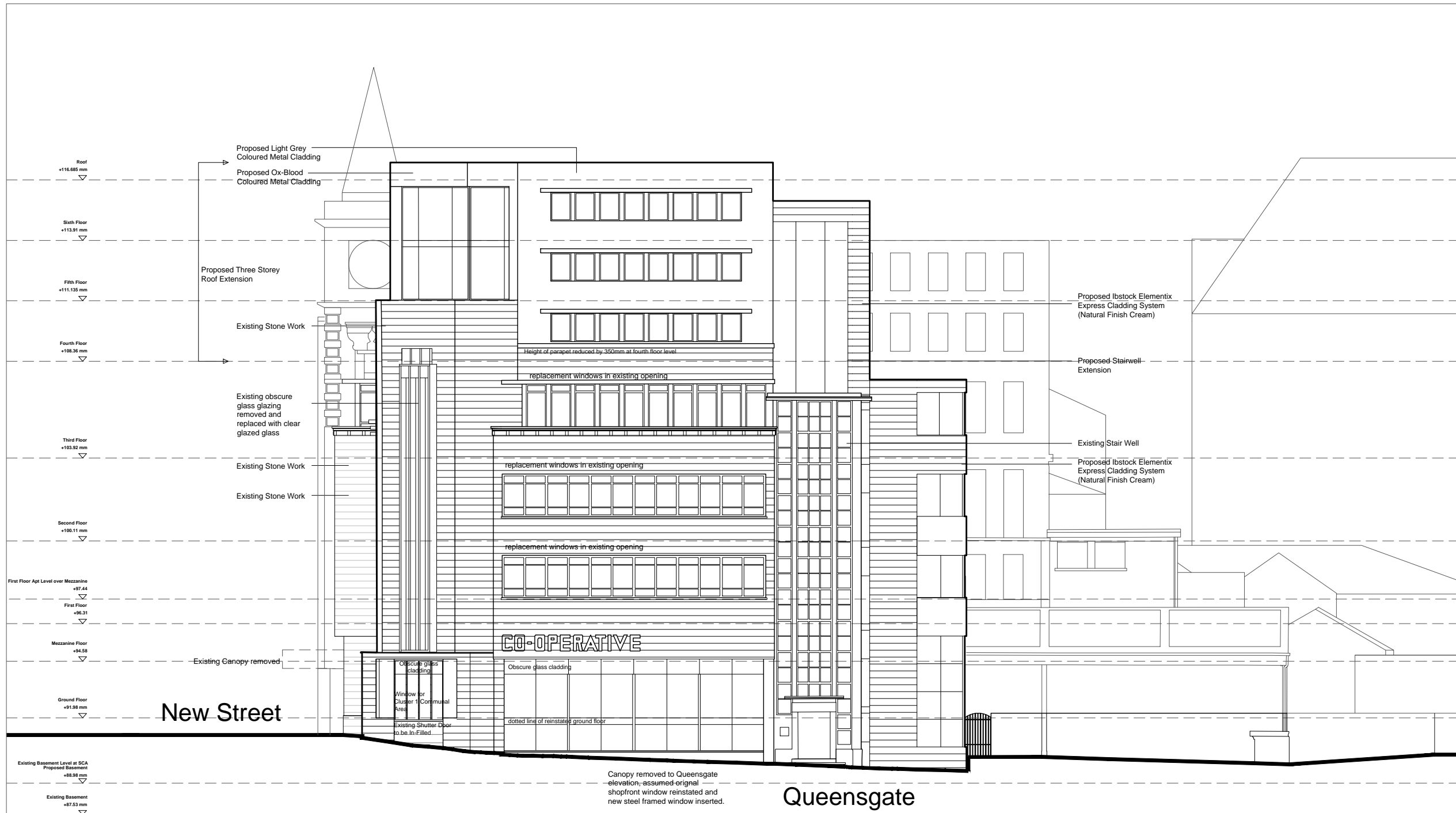


This drawing & Design is the Copyright of 1618 Architects and may not be reproduced in any way without prior written consent.

Any discrepancies on this drawing or between drawings are to be reported to this office.

Unless specifically specified these drawings are not to be used for construction purposes or placing of any orders.

Do not scale from this drawing.



Rev F	Window Layout Revised	26-02-18
Rev E	Entrance to the rear area added	04-12-17
Rev D	Change of material to elevation	22-11-17
Rev C	Window for C1 communal amended; existing canopy removed	07-11-17
Rev B	SCA removed from Fourth floor and Apt1 removed on 6th floor	03-11-17
Rev A	Existing canopy removed	18-10-17

- Status:
- Feasibility
 - Planning Approval
 - Building Regulations
 - Tender
 - Construction

Project: Renaissance Works
New Street
Huddersfield

Client: SKA

Drawing Title: Proposed Queensgate Elevation

Project No.	Drwg No.	Rev No.	Scale.	Date.
453	P-08	F	1:200@A3	Oct 2017



18a Ashley Road, Altrincham WA14 2DW
Web: www.1618architects.com Tel: 0207 377 9200

Proposed Elevation to Queensgate Road

Cheshire
London