

THIS DRAWING IS COPYRIGHT AND REMAINS THE PROPERTY OF HTC ARCHITECTS. IT MUST NOT BE REPRODUCED, USED, DISCLOSED OR TRANSMITTED TO THIRD PARTIES IN ANY FORM, IN WHOLE OR IN PART, WITHOUT PRIOR WRITTEN PERMISSION.

DO NOT SCALE!
ALL DIMENSIONS SHOULD BE CHECKED ON SITE BEFORE WORK COMMENCES

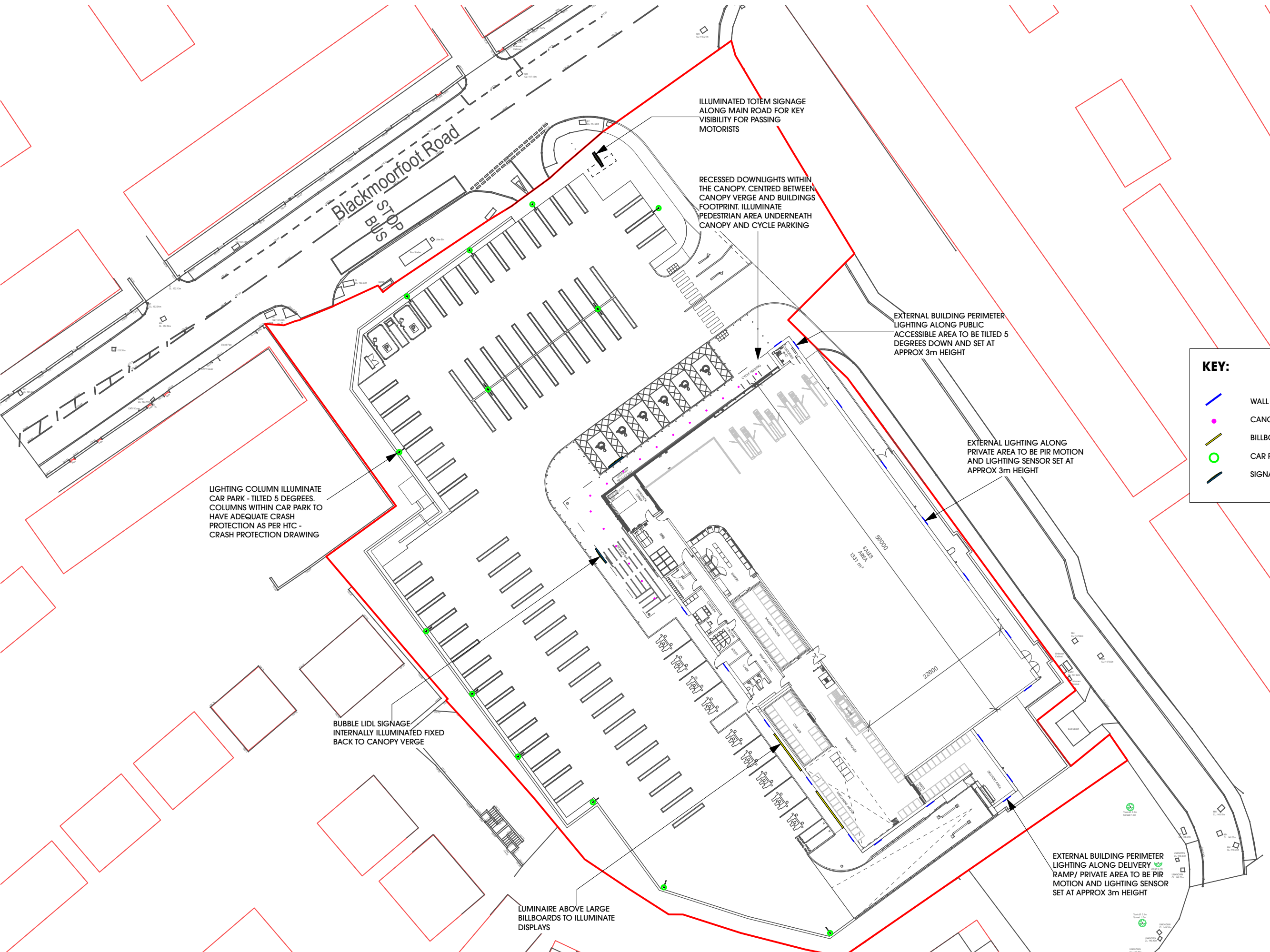
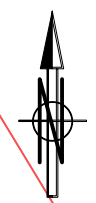
BOUNDARY BASED ON TITLE DEEDS: WYK696805

BOUNDARY BASED ON TOPOGRAPHICAL SURVEY: 5328-0721-01-C

SUBJECT TO HIGHWAYS CONSULTATION

SUBJECT TO LEVELS STRATEGY REVIEW

LIDL INTERNALS AREAS ARE SUBJECT TO CONFIRMATION FROM LIDL FOLLOWING LATEST SPECIFICATION IMPLEMENTATION (AUG 2023)



ILLUMINATED TOTEM SIGNAGE ALONG MAIN ROAD FOR KEY VISIBILITY FOR PASSING MOTORISTS

RECESSED DOWNLIGHTS WITHIN THE CANOPY, CENTRED BETWEEN CANOPY VERGE AND BUILDINGS FOOTPRINT. ILLUMINATE PEDESTRIAN AREA UNDERNEATH CANOPY AND CYCLE PARKING

EXTERNAL BUILDING PERIMETER LIGHTING ALONG PUBLIC ACCESSIBLE AREA TO BE TILTED 5 DEGREES DOWN AND SET AT APPROX 3m HEIGHT

EXTERNAL LIGHTING ALONG PRIVATE AREA TO BE PIR MOTION AND LIGHTING SENSOR SET AT APPROX 3m HEIGHT






LIGHTING COLUMN ILLUMINATE CAR PARK - TILTED 5 DEGREES. COLUMNS WITHIN CAR PARK TO HAVE ADEQUATE CRASH PROTECTION AS PER HTC - CRASH PROTECTION DRAWING

BUBBLE LIDL SIGNAGE INTERNALLY ILLUMINATED FIXED BACK TO CANOPY VERGE

LUMINAIRE ABOVE LARGE BILLBOARDS TO ILLUMINATE DISPLAYS

EXTERNAL BUILDING PERIMETER LIGHTING ALONG DELIVERY RAMP/ PRIVATE AREA TO BE PIR MOTION AND LIGHTING SENSOR SET AT APPROX 3m HEIGHT

KEY:

-  WALL MOUNTED BUILDING PERIMETER LIGHTING
-  CANOPY DOWNLIGHTS
-  BILLBOARD LIGHTING
-  CAR PARK LIGHTING LAMPOST
-  SIGNAGE LIGHTING



htcarchitects
 York Place Studio
 8 Britannia Street
 Leeds
 LS1 2JZ
 T: (0113) 244 3457
 W: www.htcarchitects.co.uk
 E: info@htcarchitects.co.uk

client
Lidl GB Ltd.



project
Blackmoorfoot Road
Huddersfield
drawing title
Proposed Site Lighting Plan

date August 2023
 status Planning
 scale 1:500 @ A3
 drawn KA checked BM
 job no. 2783 dwg no. P421 rev.

Rev	Date	Description	Drawn