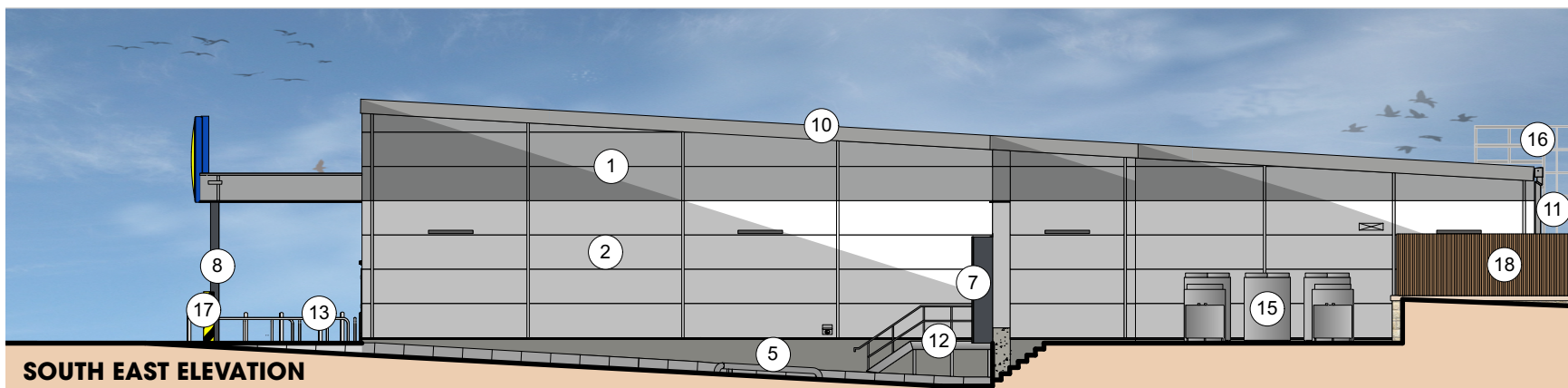
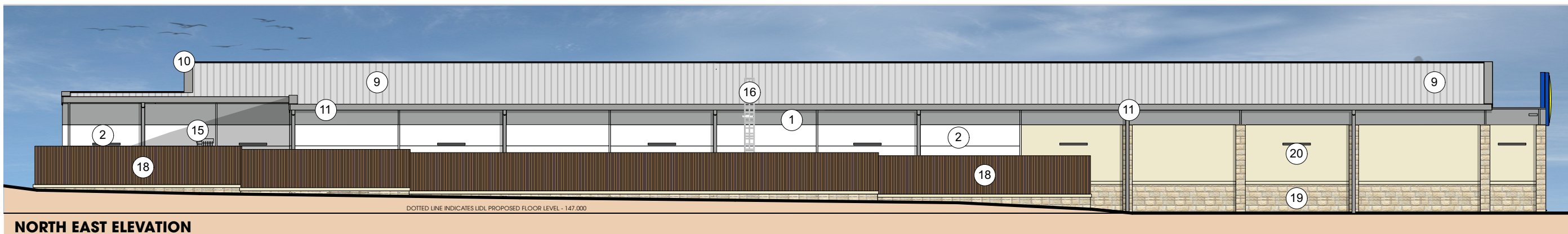


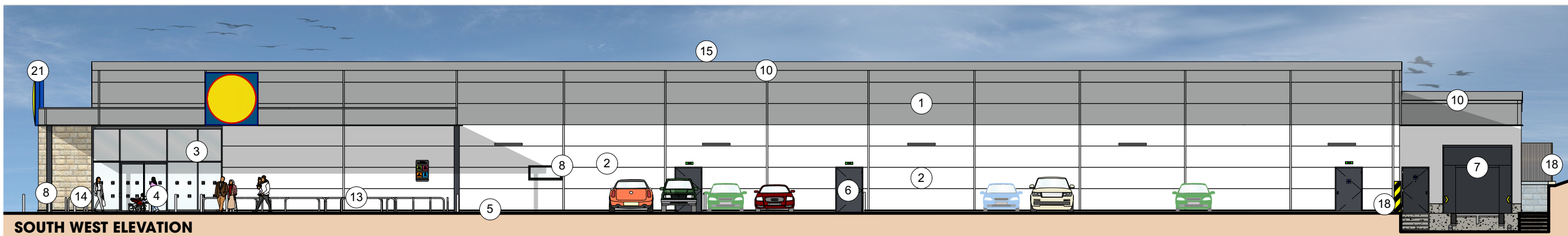
**NORTH WEST ELEVATION**



**SOUTH EAST ELEVATION**



**NORTH EAST ELEVATION**



**SOUTH WEST ELEVATION**

**MATERIALS KEY**

- |    |  |    |   |
|----|--|----|---|
| 1  | INSULATED METAL CLADDING PANELS - COLOUR: GREY (RAL 9006)  | 13 | STAINLESS STEEL TUBULAR TROLLEY GUIDES (MARINE GRADE 316) SPACES FOR WHEELCHAIR SHOPPING TROLLEYS AND TROLLEYS WITH BABY SEATS. |
| 2  | INSULATED METAL CLADDING PANELS - COLOUR: WHITE (RAL 9010)   | 14 | STAINLESS STEEL CYCLE STANDS, 750mm HIGH, ROOT FIXED TO CONCRETE FOUNDATION.  |
| 3  | CURTAIN WALLING - DOUBLE GLAZED UNITS - COLOUR: GREY (RAL 7024)  | 15 | M&E ITEMS, SIZE AND LOCATIONS ARE INDICATIVE ONLY   |
| 4  | ENTRANCE DOORS - DOUBLE GLAZED UNITS - COLOUR: GREY (RAL 7024)   | 16 | ROOF ACCESS LADDER  |
| 5  | LOW LEVEL RENDER - COLOUR: GREY (RAL 7038)   | 17 | CONCRETE FILLED GALVANISED STEEL HGV BOLLARD PAINTED BLACK & YELLOW AT 45DEG.   |
| 6  | POWDER COATED STEEL DOORS - COLOUR: GREY (RAL 7024)  | 18 | LOCALLY SOURCED STONE FACED RETAINING WALL FINISHED WITH CLEAN CUT ASHLAR AND 1.8m VERT. HIT AND MISS TIMBER FENCE              |
| 7  | SECTIONAL DOOR - COLOUR: GREY (RAL 7024)   | 19 | BUFF FACING NATURAL LOCALLY SOURCED STONE. FINISHED WITH CLEAN CUT ASHLAR BANDING.  |
| 8  | NON OPENABLE FIXED SAFETY GLASS WINDOWS - COLOUR: GREY (RAL 7024)  | 20 | STONE COLOURED RENDER, COLOUR TO MATCH (20) NATURAL LOCAL SOURCED STONE   |
| 9  | METAL COMPOSITE INSULATED ROOF PANELS  |    |   |
| 10 | STEEL COPING FLASHING TO ROOF PERIMETER - COLOUR: GREY (RAL 9006)  |    |   |
| 11 | ALUMINIUM GUTTERS AND RAIN WATER PIPES - COLOUR: GREY (RAL 9006)   |    |   |
| 12 | GALVANISED METAL DRIVERS STEPS, STAIRCASE AND BALLUSTERS WITH HANDRAILS. ALL STEPS TO BE CONSTRUCTED IN ACCORDANCE WITH BUILDING REGS PART K |    |   |

