

## **Interim publication of 2024 to 2027 school place planning data and intelligence**

This publication is an interim measure prior to the full publication of a 2024 to 2027 School Place Planning Document. The population data included covers both the primary and secondary phases, but data on cross-border pupil movement focuses on the secondary phase as this is where the most significant cross-border movement occurs.

**September 2024**

School Organisation and Planning Team  
Kirklees Learning and Early Support Service

[school.organisation@kirklees.gov.uk](mailto:school.organisation@kirklees.gov.uk)

## Population and Pupil Cohorts:

Chart 1 illustrates a comparison between two key sets of data that provide the baseline for school place planning. Data extracted from the NHS GP patient register provides the number of children and young people aged between 0-16 years resident in Kirklees. Data collection methods ensure that children and young people living in Kirklees but accessing a GP outside Kirklees are included and, conversely, that children and young people living outside Kirklees using a Kirklees-based GP are removed. Whilst no dataset is 100% accurate, this is considered the best available for this purpose.

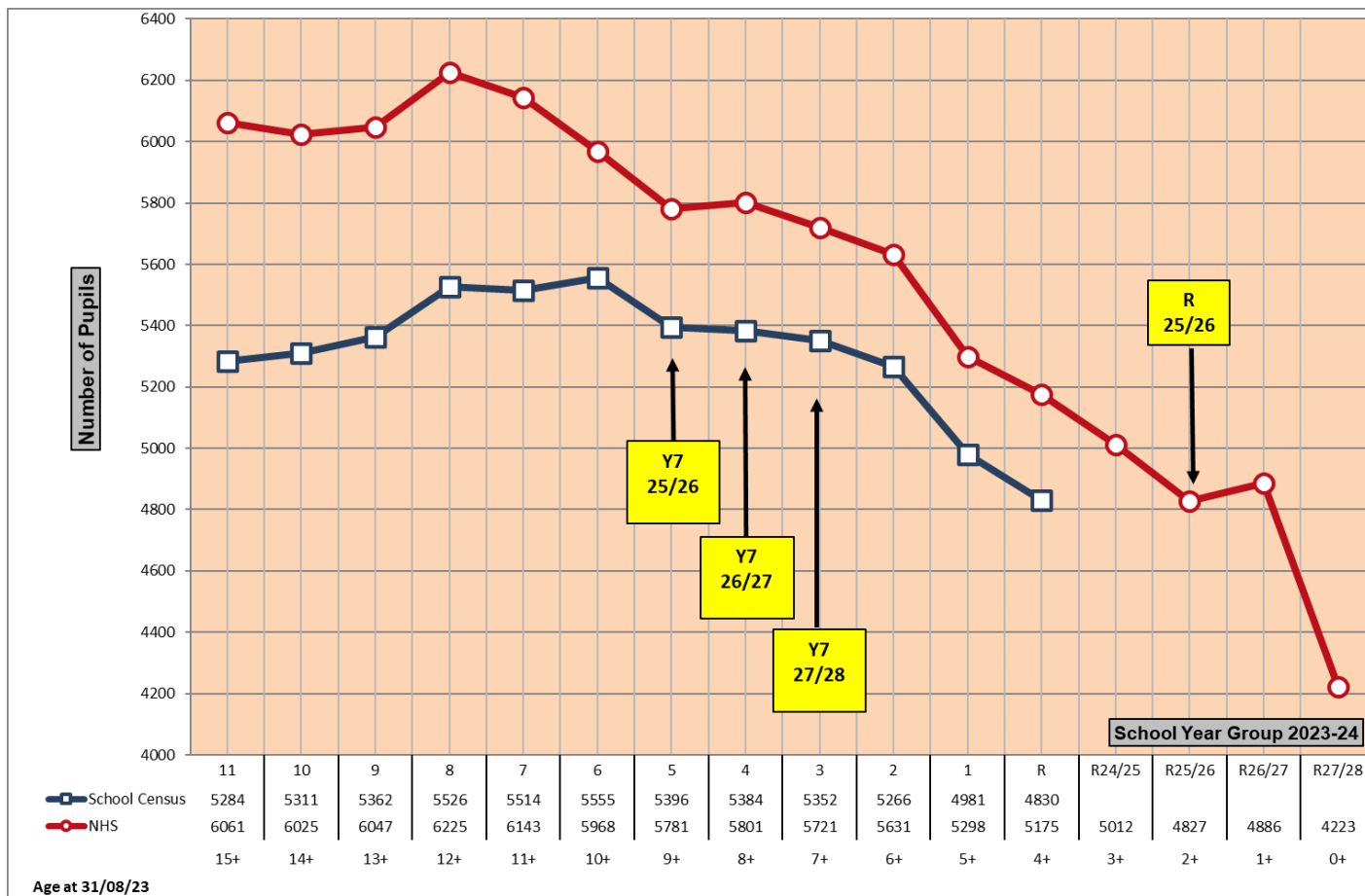
The School Census provides a count of the number of pupils on school rolls at a fixed point in time. January Census is used as this represents a stable position after which movement associated with normal round admission appeals is limited. The purpose of this collection is to obtain accurate data about publicly funded schools and their pupils and is used for statistical analysis. The population data indicates the overall potential demand for school places. The NHS GP patient register for 0–4-year-olds is key for forecasting future demand, however, it should be noted that data for 0-1-year-olds can under-represent the cohort size.

**Chart 1: Year Group Numbers 2023-24 – NHS Data and Kirklees School Pupil Census**

Sources: NHS GP registration data October 2023 - NHS Digital

Kirklees School Census January 2024 – Data & Insight, Public Health & Corporate

Resources directorate



## Explanatory notes to accompany Chart 1

- The population data shown is derived from a snapshot of GP registration data provided by NHS Digital from the NHS Primary Care Registration (Demographic) database. The snapshot of data is from 1 October 2023. It breaks down the number of children living in Kirklees postcodes and registered at a GP practice. Historically, this is the best measure of the population because it gives an update on births, migration in and out of the area, and changes in residents due to tenancy changes or house building.
- The Kirklees School Census data in Chart 1 shows the total number of all pupils in Kirklees schools. A more detailed breakdown of pupil numbers by school year and type of school they attend will be available when the full school place planning document is published
- The difference between the NHS and school census datasets reflects:
  - The number of children attending non-state funded education
  - Children missing education
  - Home educated children
- The difference between the NHS and school census datasets also indicates the number of children attending schools in neighbouring authorities, which is only partly offset by children living in other authorities who attend schools in Kirklees. Recent data on these movements between authorities is presented below. The greater difference between population and school numbers for secondary aged young people reflects the larger number of secondary aged pupils in neighbouring LA schools.

Chart 1 demonstrates significant consistency between population and census trends in future years when comparing cohort sizes.

### **Primary Places**

The Kirklees level population trend for Reception age children has been declining since a peak in 2015/16. This decline is expected to continue at a similar rate towards 2025/26 before a slight increase in 2026/27, focused in North Kirklees. Following this, the NHS GP registration data show a significant drop in population in 2027/28. It is not possible to tell at this stage whether this decrease will be short-lived or more sustained, nor whether it will be as significant as indicated by the currently available data. Recent analysis shows continued in-year growth in Reception cohorts as they move through the primary phase, which to some extent offsets the ongoing population decline. Further analysis of in-year movement will be provided in the 2024 place planning document.

Generally, the decline in population provides greater choice for parents, and their preferences continue to have a significant impact on the demand for school places at planning area and individual school level. A combination of falling population and the dynamics of parental preference is placing a different pressure on the school system, where surplus places in some areas are impacting upon the budgets of individual schools. With school budgets predominantly based upon numbers of children on roll, schools with falling numbers of pupils are having to make budget cuts, including the reduction of staff.

**Continued engagement is required with the school system about the level of surplus places and opportunities that may exist.**

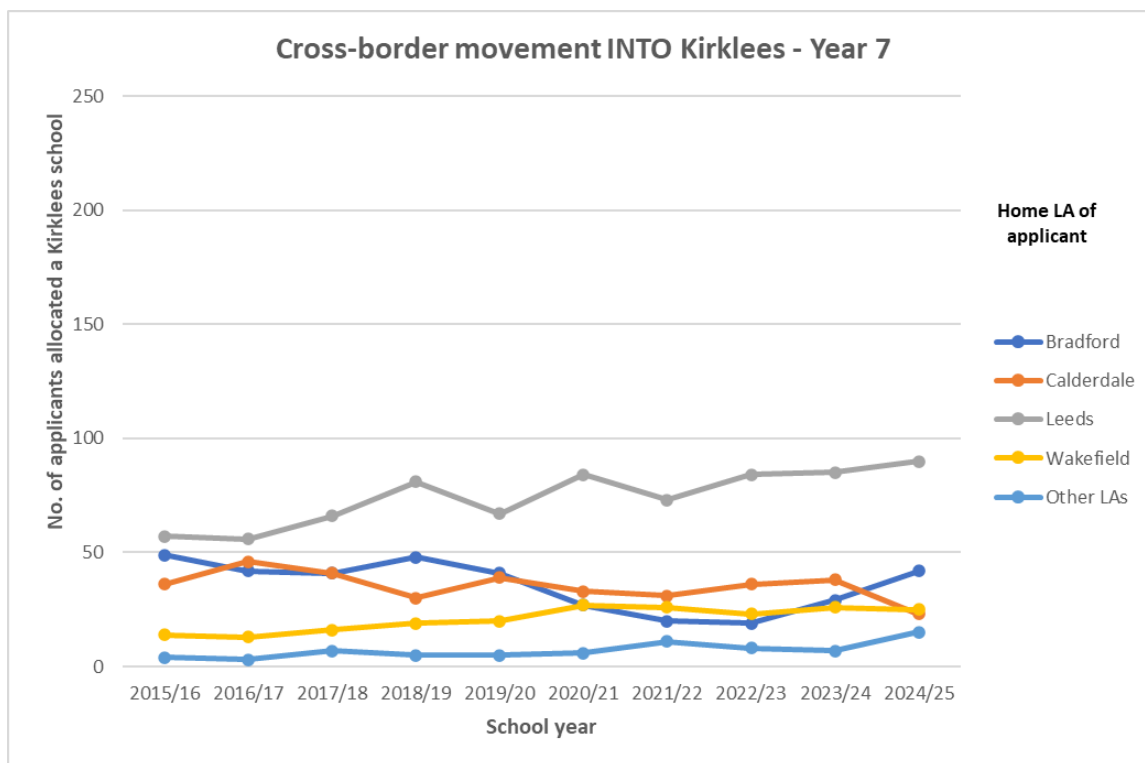
**Secondary Places**

Despite population data continuing to indicate the largest population peak came in 2022/23, the peak in demand for places was actually greater in 2023/24. 2024 National Offer Day data indicates that demand has started to decline, as suggested by population data. However, there was still a need for bulge places, albeit it fewer than the previous year. For the second year running, it was necessary to introduce further bulge places post-offer day before the initial round of reallocations took place. The reasons for this are likely to be in-year movement between the closing date for applications and National Offer Day, resulting in late applications or changes of preference. A reduction in the number of Kirklees residents securing places at secondary schools in other local authorities for the second consecutive year may have impacted too. Further work needs to be done to fully understand the reasons behind the need for these additional post-offer day bulge places.

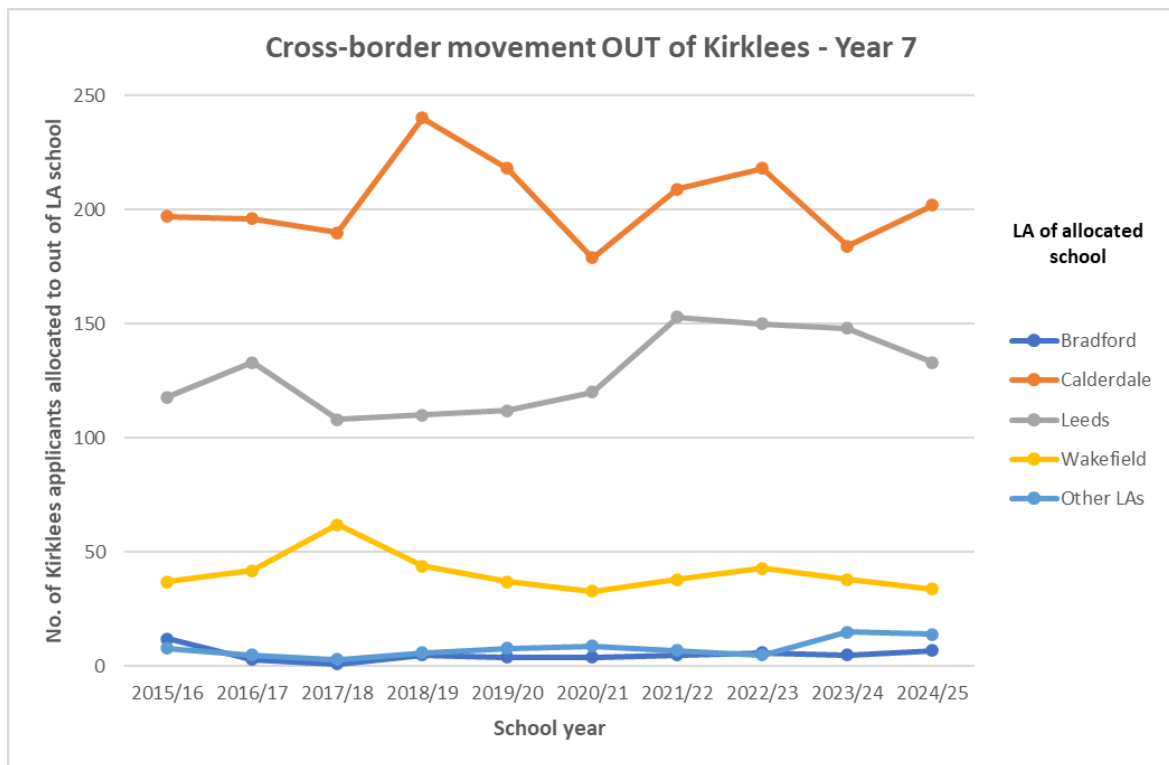
Demand is expected to decline again in 2025/26, before levelling off in 2026/27 for one year only, ahead of a further period of decline. During the peak in population, high demand for places has been managed by the carefully planned introduction of temporary bulge places with the goodwill and collaboration of the Kirklees school system. These bulge classes are still working their way through the school system, and this does continue to present some challenges to in-year pupil movement. However, the pressure on Year 7 places will begin to ease as the population declines.

**Cross Border Movement of secondary pupils at Year 7**

**Chart 2: number of places being allocated at Kirklees schools to children living in different local authorities.**



**Chart 3: number of pupils resident in Kirklees who secured a place in schools in other local authorities.**



Both Charts 2 and 3 represent the position on National Offer Day, rather than the actual numbers collected at a later school census. The same data are presented below in Tables 1 and 2, along with a third table which demonstrates the overall net outward movement of pupils and how this has changed over time. The net outward movement of Year 7 pupils reached its highest level in 2021/22 and 2022/23. Net outward movement decreased for the second year in a row in 2024/25. The number of Kirklees pupils securing places at Calderdale schools continues to fluctuate, increasing again in 2024/25 after a dip in 2023/24. The number of Kirklees pupils securing places at Leeds schools in 2024/25 fell to its lowest level since 2020/21.

Cross-border engagement with school place planning colleagues in Calderdale and Leeds local authorities takes place regularly. The intelligence shared indicates a stable picture of cross-border movement between Kirklees and Leeds going forward, with the opportunities that Kirklees pupils have to secure places at Leeds schools being unlikely to diminish in the near future. However, population data, while very significant, is only one of many factors affecting the allocation of school places. Parental preference is another important influencing factor, for example.

The situation with cross-border movement with Calderdale is less certain into the future as the impact of two large strategic development sites, one either side of the border, remains to be seen.

Geographically, Leeds, Bradford and Wakefield cross-border pupil movement predominantly have an impact in North Kirklees, and Calderdale predominantly in South Kirklees. Tables 1-3 below detail the outward, inward, and overall net cross-border pupil movement.

**Table 1 - outward movement**

LA of allocated School	2015/16	2016/17	2017/18	2018/19	2019/20	2020/21	2021/22	2022/23	2023/24	2024/25
Bradford	12	3	1	5	4	4	5	6	5	7
Calderdale	197	196	190	240	218	179	209	218	184	202
Leeds	118	133	108	110	112	120	153	150	148	133
Wakefield	37	42	62	44	37	33	38	43	38	34
Other LAs	8	5	3	6	8	9	7	5	15	14

**Table 2 - inward movement**

	2015/16	2016/17	2017/18	2018/19	2019/20	2020/21	2021/22	2022/23	2023/24	2024/25
Bradford	49	42	41	48	41	27	20	19	29	42
Calderdale	36	46	41	30	39	33	31	36	38	23
Leeds	57	56	66	81	67	84	73	84	85	90
Wakefield	14	13	16	19	20	27	26	23	26	25
Other LAs	4	3	7	5	5	6	11	8	7	15

**Table 3 - net movement (-outward/+inward)**

	2015/16	2016/17	2017/18	2018/19	2019/20	2020/21	2021/22	2022/23	2023/24	2024/25
Bradford	37	39	40	43	37	23	15	13	24	35
Calderdale	-161	-150	-149	-210	-179	-146	-178	-182	-146	-179
Leeds	-61	-77	-42	-29	-45	-36	-80	-66	-63	-43
Wakefield	-23	-29	-46	-25	-17	-6	-12	-20	-12	-9
Other LAs	-4	-2	4	-1	-3	-3	4	3	-8	1
<b>Net movement</b>	<b>-212</b>	<b>-219</b>	<b>-193</b>	<b>-222</b>	<b>-207</b>	<b>-168</b>	<b>-251</b>	<b>-252</b>	<b>-205</b>	<b>-195</b>